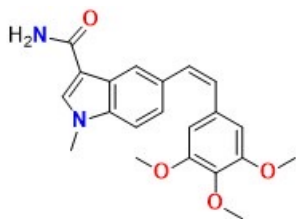
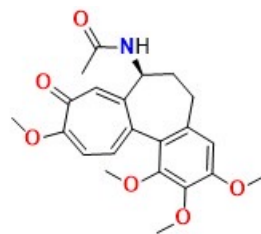


**Combretastatin A4 (CA4)**

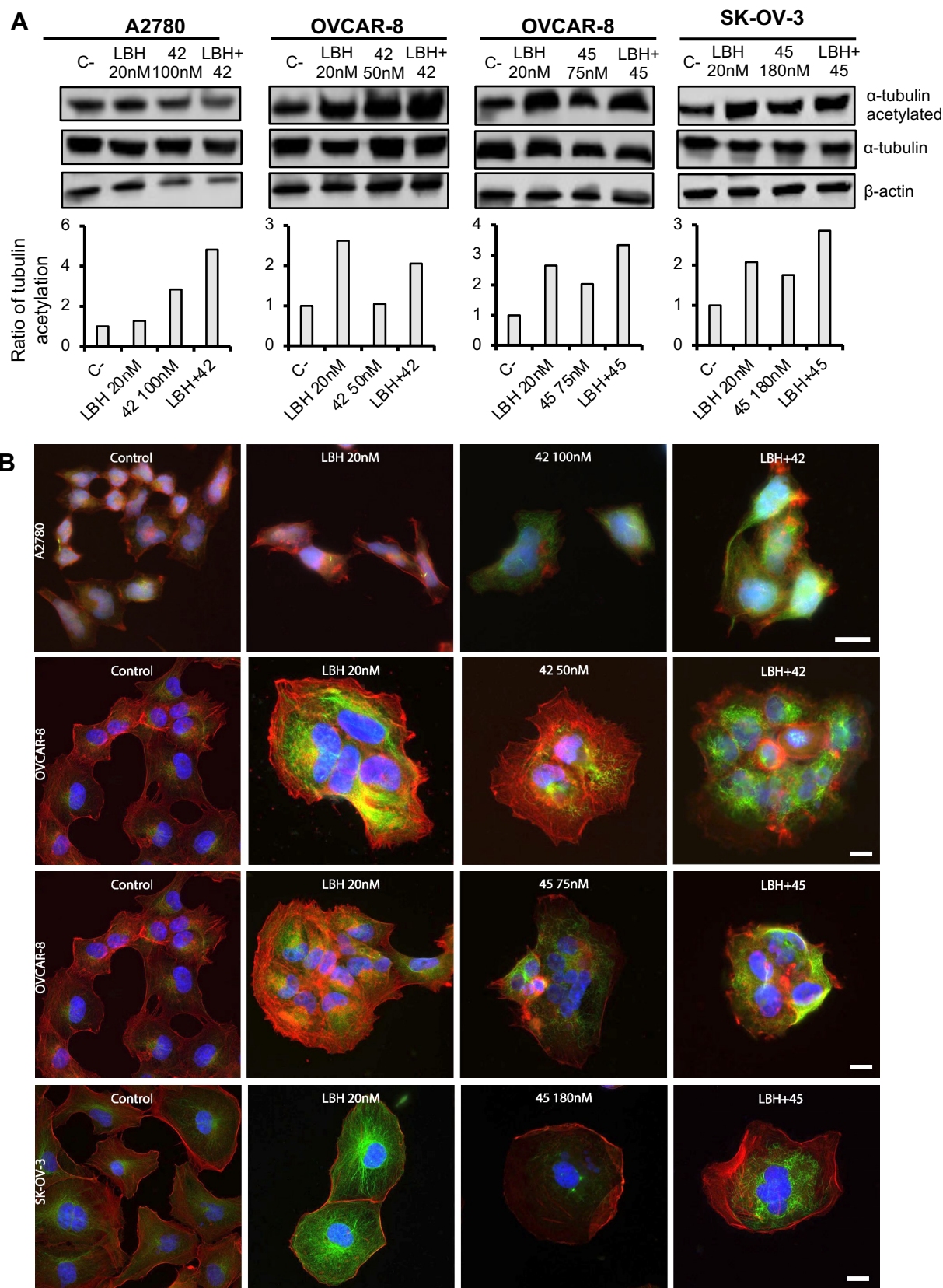


**PILA9 (P9)**



**Colchicine (COL)**

**Figure S1.** Chemical structure of combretastatin A4, **PILA9** and colchicine



**Figure S2.** The combination of LBH and **42/45** induces strong acetylation of  $\alpha$ -tubulin. A) A2780, OVCAR-8 or SK-OV-3 cells were treated or not with LBH (20nM) and/or the indicated doses of **42/45** for 24 h and the acetylation of  $\alpha$ -tubulin were observed by flow western blot.  $\beta$ -actin was used as a loading control. Protein levels were quantified using ImageJ and the ratio of tubulin acetylation was calculated as the proportion of  $\alpha$ -tubulin acetylated to  $\alpha$ -tubulin total. Previously, these values were normalized using  $\beta$ -actin levels and untreated cells (C-) levels were taken as 100. B) A2780, OVCAR-8 and SK-OV-3 cells were treated or not with LBH and/or **42/45** and  $\alpha$ -tubulin acetylated (green) and actin (red) were observed by immunofluorescence. Nuclei were stained with Hoechst (blue). Scale bar: 10  $\mu$ m.