

Preeclampsia Correlates with an Increase in Cannabinoid Receptor 1 Levels Leading to Macromolecular Alterations in Chorionic Villi of Term Placenta

Marta Lombó ^{1,2,†}, Christian Giommi ^{1,†}, Michela Paolucci ³, Valentina Notarstefano ¹, Nina Montik ³, Giovanni Delli Carpini ³, Andrea Ciavattini ³, Antonio Ragusa ⁴, Francesca Maradonna ^{1,5,*}, Elisabetta Giorgini ¹ and Oliana Carnevali ^{1,5,*}

¹ Department of Life and Environmental Sciences, Università Politecnica delle Marche, 60131 Ancona, Italy

² Department of Molecular Biology, Faculty of Biology and Environmental Sciences, Universidad de León, 24071 León, Spain

³ Department of Odontostomatological and Specialized Clinical Sciences, Università Politecnica delle Marche, 60020 Ancona, Italy

⁴ Department of Obstetrics and Gynecology, Università Campus Bio Medico di Roma, 00128 Roma, Italy

⁵ INBB—Consorzio Interuniversitario di Biosistemi e Biostrutture, 00136 Roma, Italy

* Correspondence: f.maradonna@staff.univpm.it (F.M.); o.carnevali@staff.univpm.it (O.C.)

† These authors contributed equally to this work.

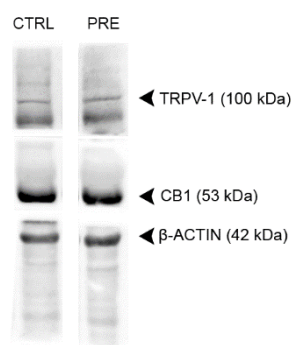


Figure S1. Representative experiment of western blot. Densitometric analysis of the band gray levels of CB1 (53 kDa) and TRPV-1 (100 kDa) in CTRL and PRE samples was performed using β -ACTIN (42 kDa) as internal control.