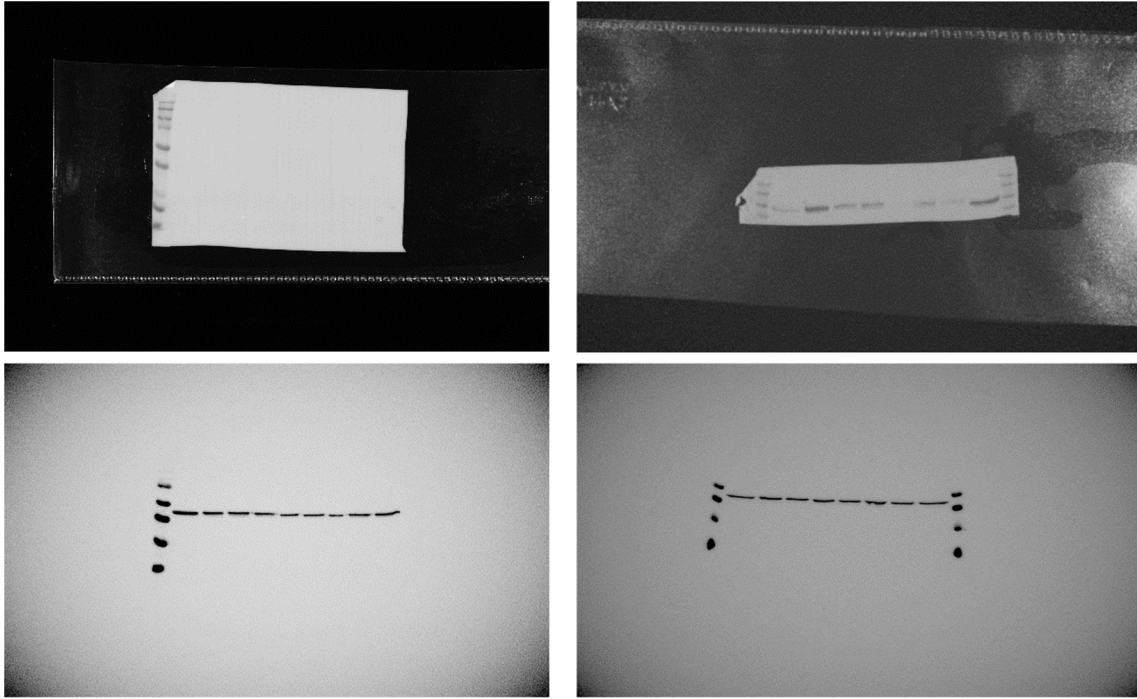


**Figure S1.** LTF dose test. Statistical differences: \*\*\* $p < 0.0001$  between cells stimulated with 100ng/mL Pam3CSK4 and cells pre-incubated with 2mg/mL LTF. Abbreviations: LTF, lactoferrin; Pam3, Pam3CSK4; SEAP, secreted embryonic alkaline phosphatase.



**Figure S2.** Uncropped blots in the same order as in Figure 4C.