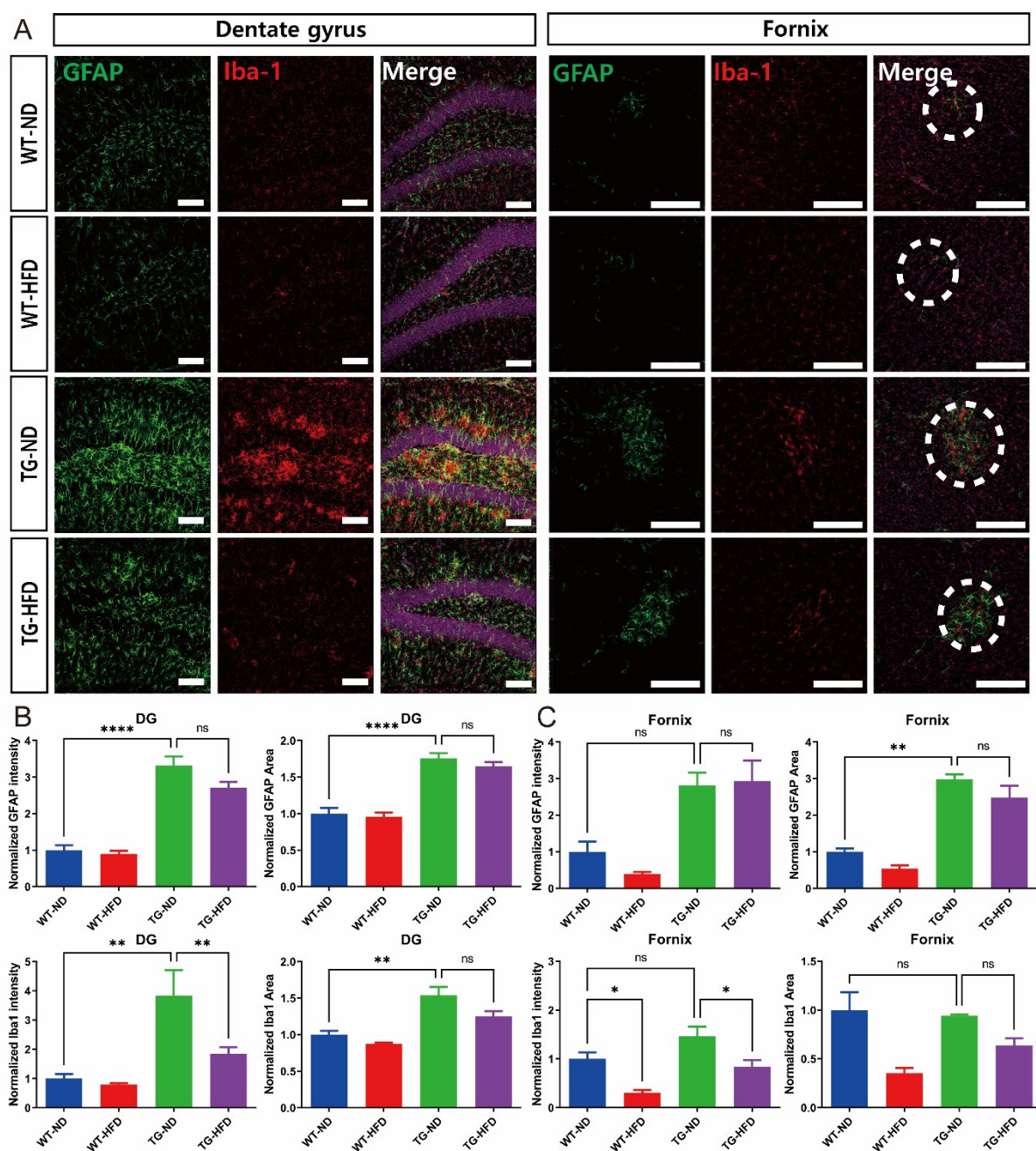


Supplementary Figure S1. Analysis of the fat weight (A–C), the blood cholesterol (D–G), and the glucose tolerance test (GTT) (H,I) changes under a high-fat diet (HFD) in the male 5XFAD Alzheimer's disease transgenic mouse model. ns (not significant), $*p < 0.05$, $**p < 0.01$, $***p < 0.001$, and $****p < 0.0001$ (one-way analysis of variance with Tukey post hoc analysis). The number of animals in each group ranged 3–6. Data are presented as the mean \pm standard error of the mean. ND, normal chow; WT, wildtype; TG, transgenic.



Supplementary Figure S2. Analysis of astrocyte and microglia reactivity in the hippocampal dentate gyrus (DG) (A,B) and the hypothalamic fornix region (A,C) under a high-fat diet (HFD). Representative immunofluorescence images of glial fibrillary acidic protein (GFAP) and ionized calcium binding adaptor molecule 1 (Iba1) staining in the male 5XFAD Alzheimer's disease transgenic mouse model. Scale bars = 100 μ m, ns (not significant), * p < 0.05, ** p < 0.01, and **** p < 0.0001 (one-way analysis of variance with Tukey post hoc analysis). The number of animals in each group ranged 3–8. Data are presented as the mean \pm standard error of the mean. ND, normal chow; WT, wildtype; TG, transgenic.

