

Figure S1: Analysis of NS5A-D2 expression in transduced Huh7-*GCK⁺/HK2⁻* cells

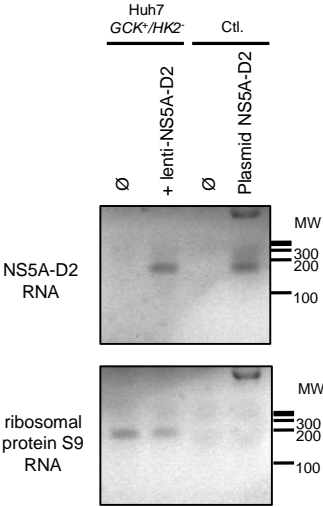


Figure S2: ECAR and OCR quantification during Glycolytic Rate Test performed at 5 and 25mM glucose, on Huh7-*GCK*⁺/*HK2*⁻ cells expressing or not NS5A-D2.

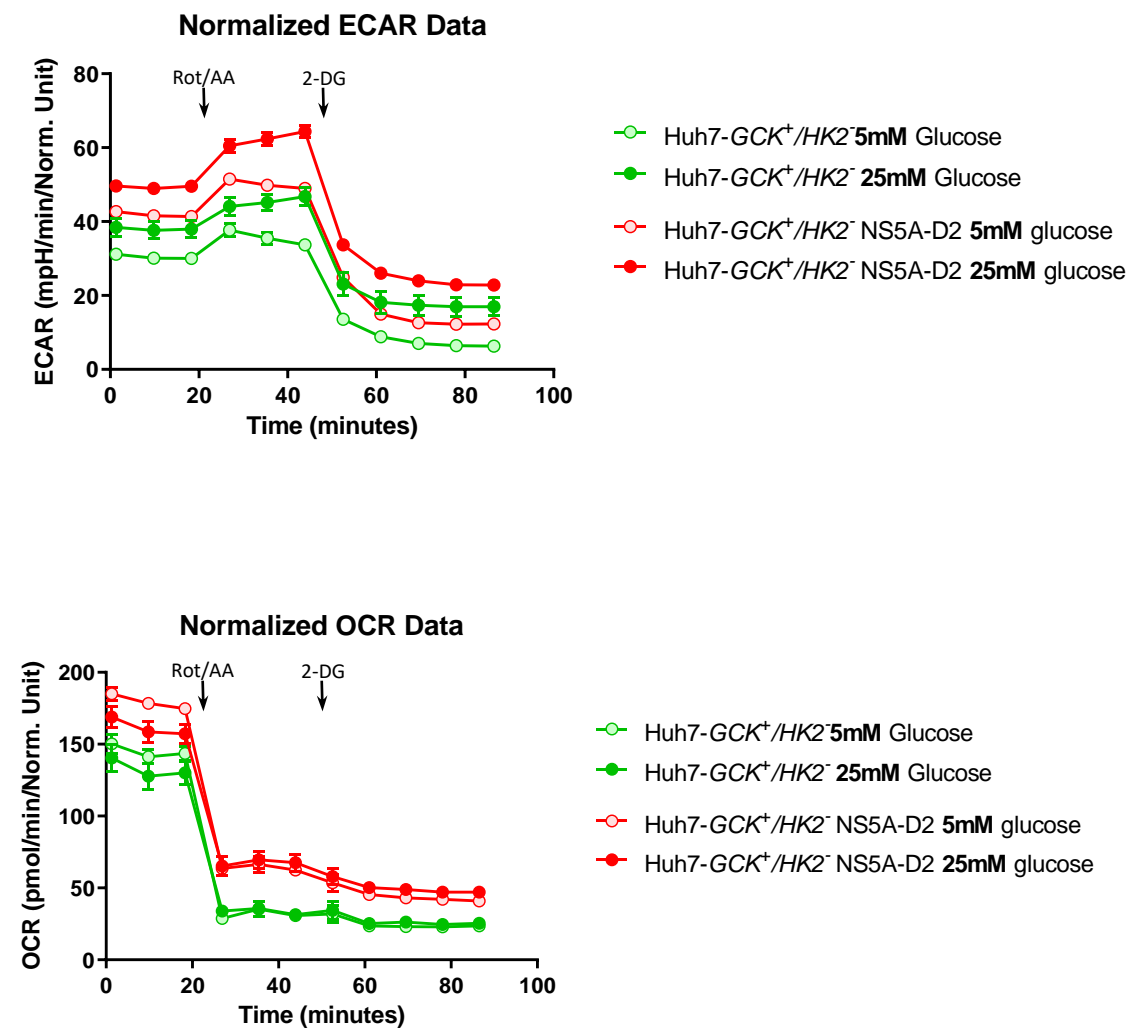


Figure S3: NS5A-D2 alters allosteric properties of GCK enzyme

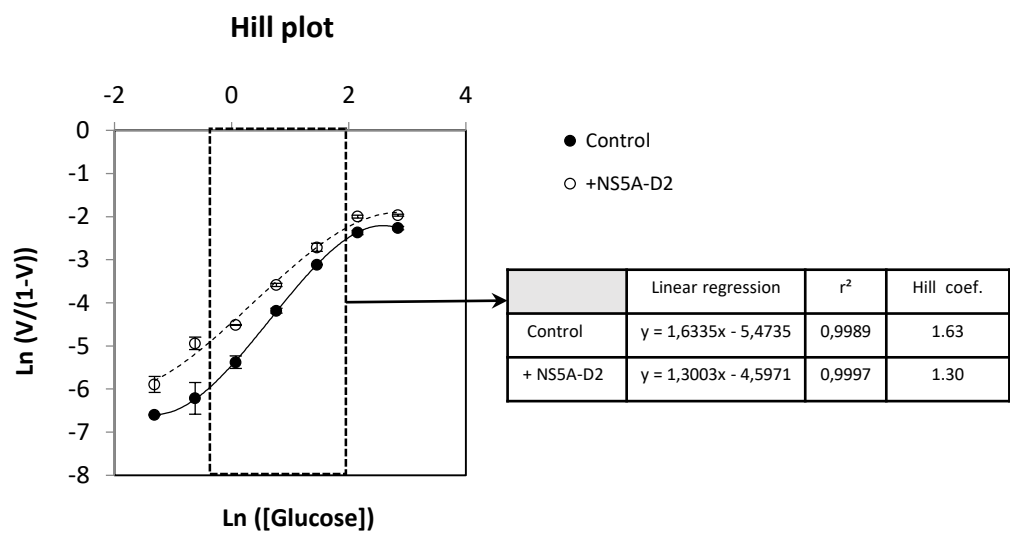


Figure S4: Western-blot Figure 1A

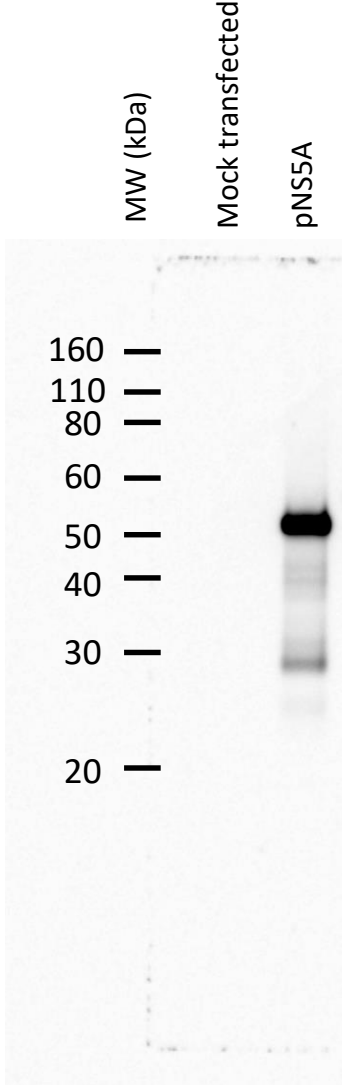


Figure S5: Western-blot Figure 4A

