

Fiorino E. et al.

**Integrated antitumor activities of cellular immunotherapy
with CIK lymphocytes and interferons against KIT/PDGFRA
wild type GIST.**

Supplementary Materials

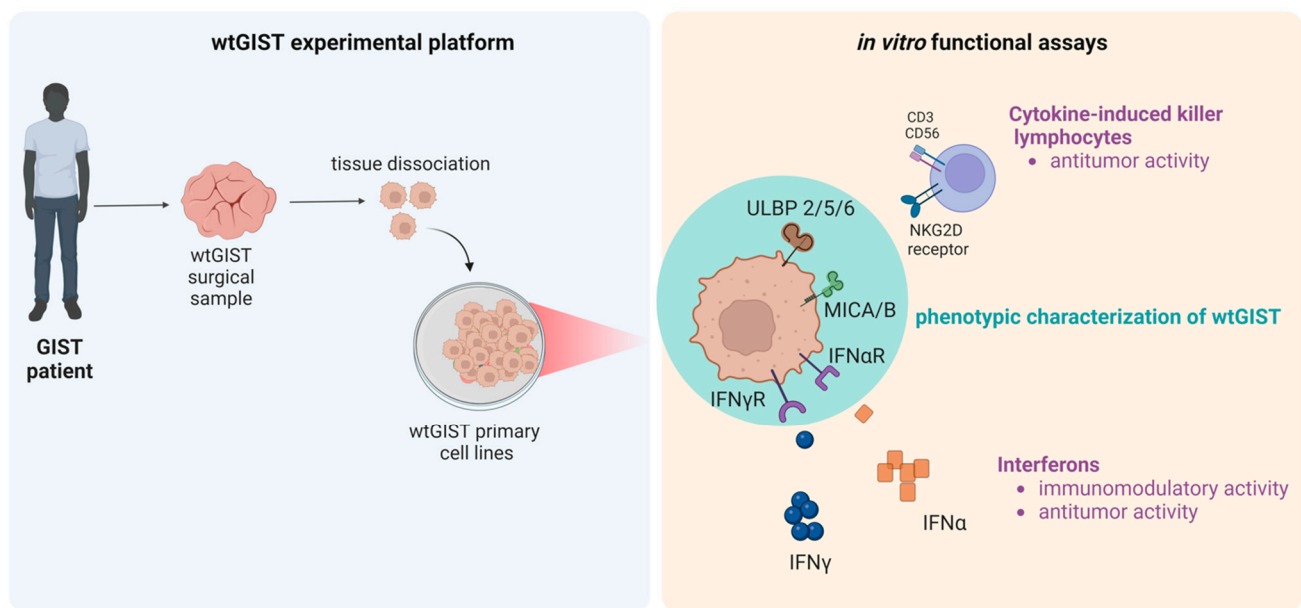


Figure S1. Study schematic with experimental platform for patient-derived cells (left) and *in vitro* functional assays (right). Created with BioRender.com.

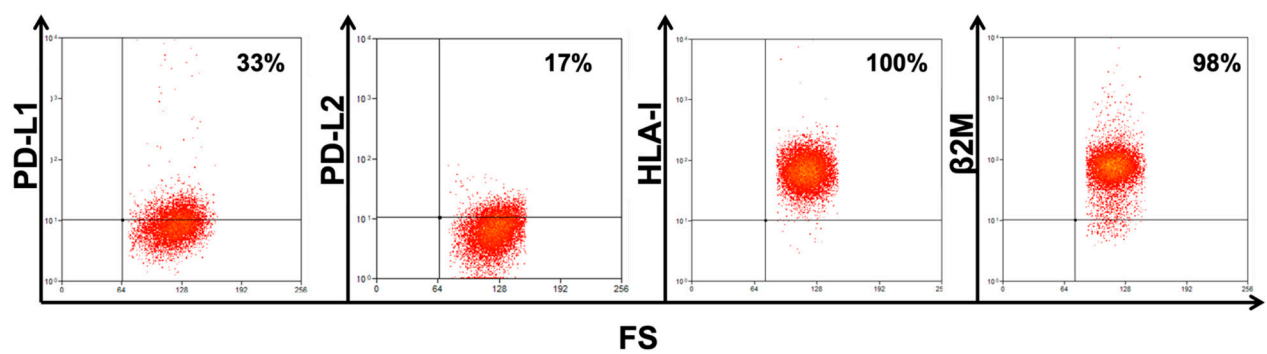


Figure S2: exemplificative cytometry dot plots showing PD-L1, PD-L2, HLA-I/ β 2M on wtGISTc.

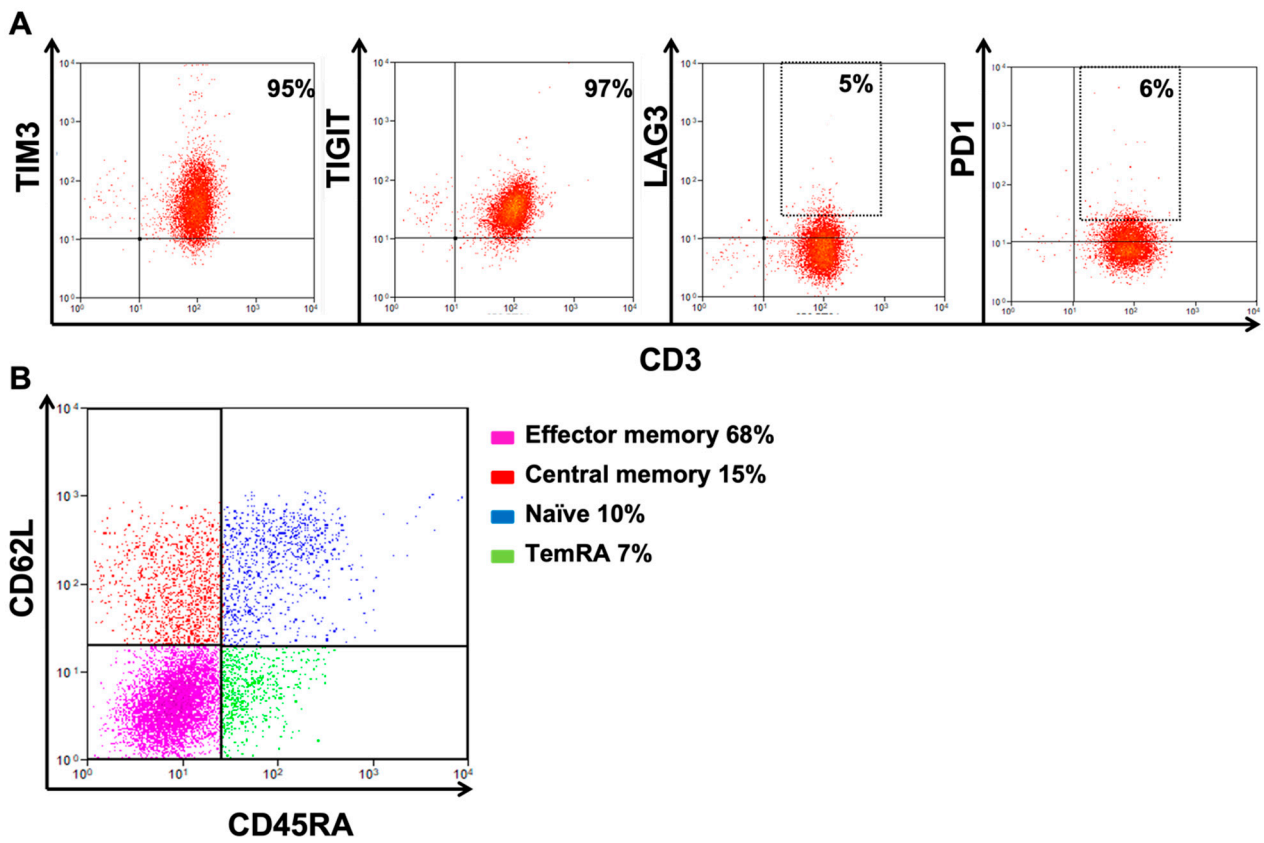


Figure S3: exemplificative cytometry dot plots showing CIK phenotype and immune checkpoints expression.