

Supplementary Figures

Figure S1

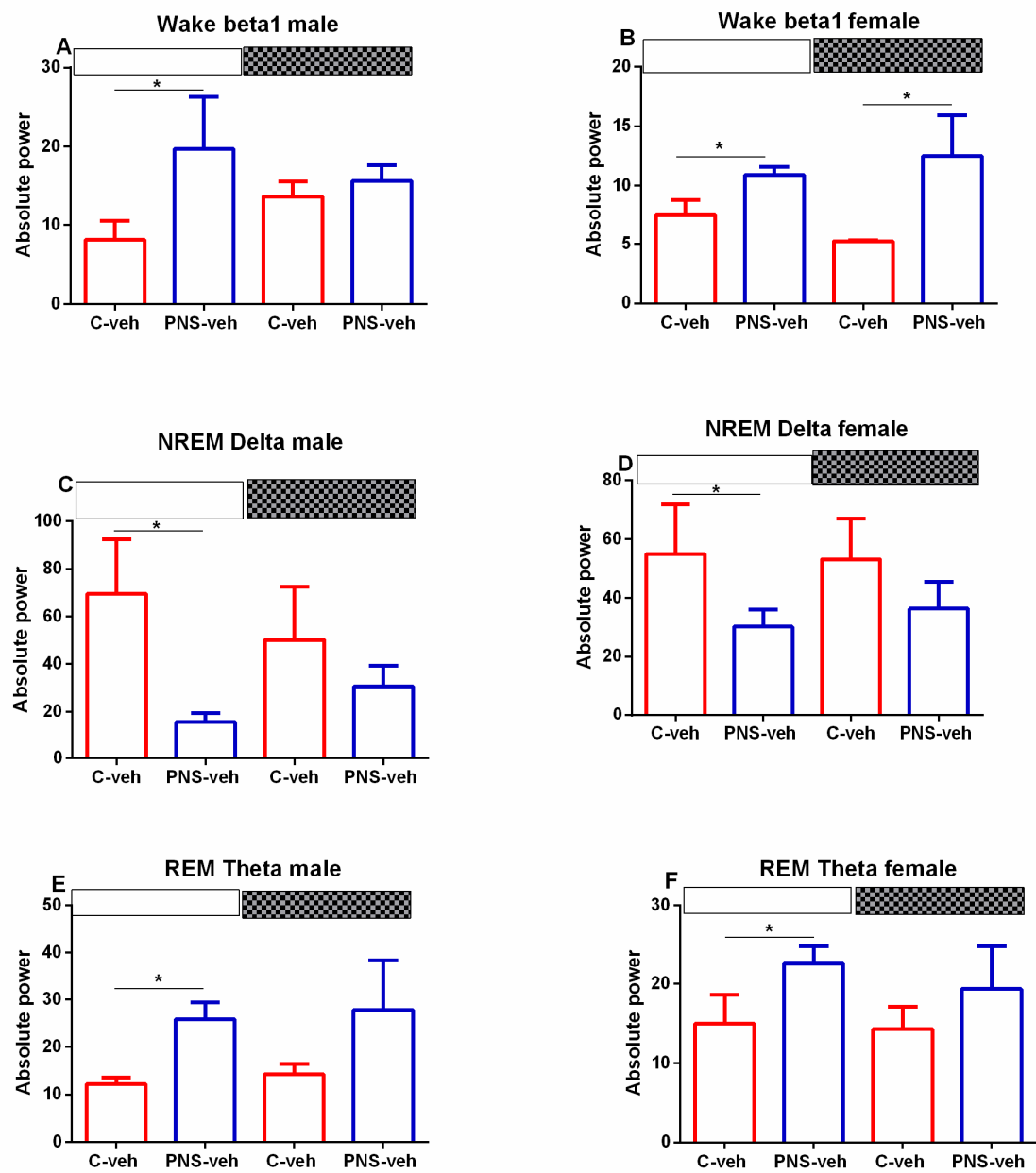
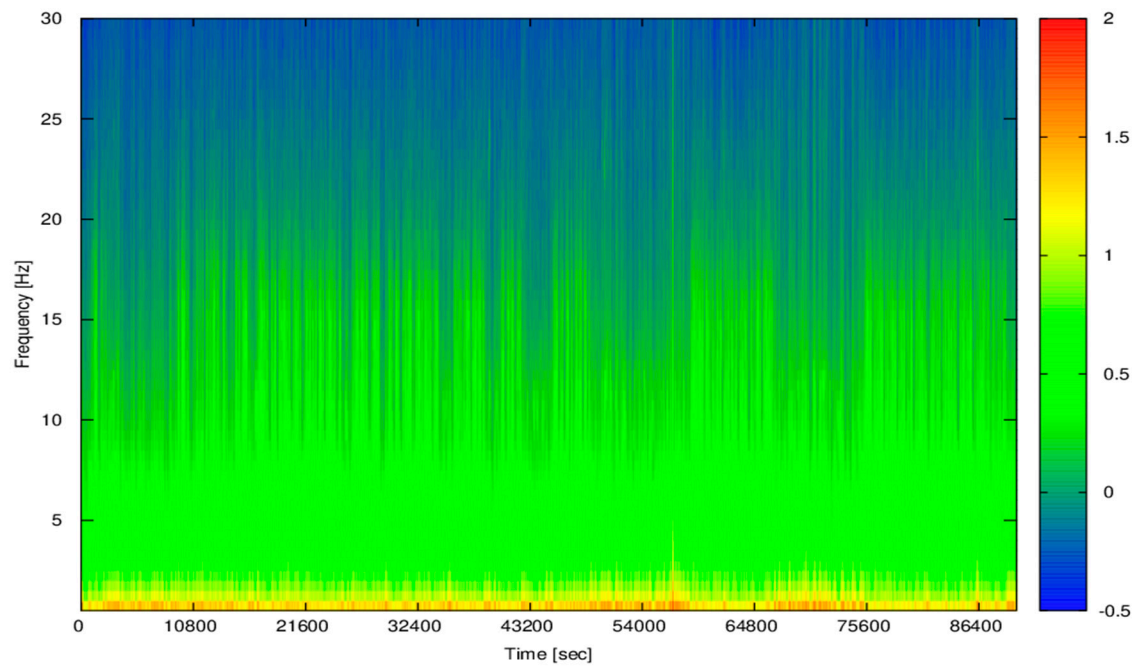
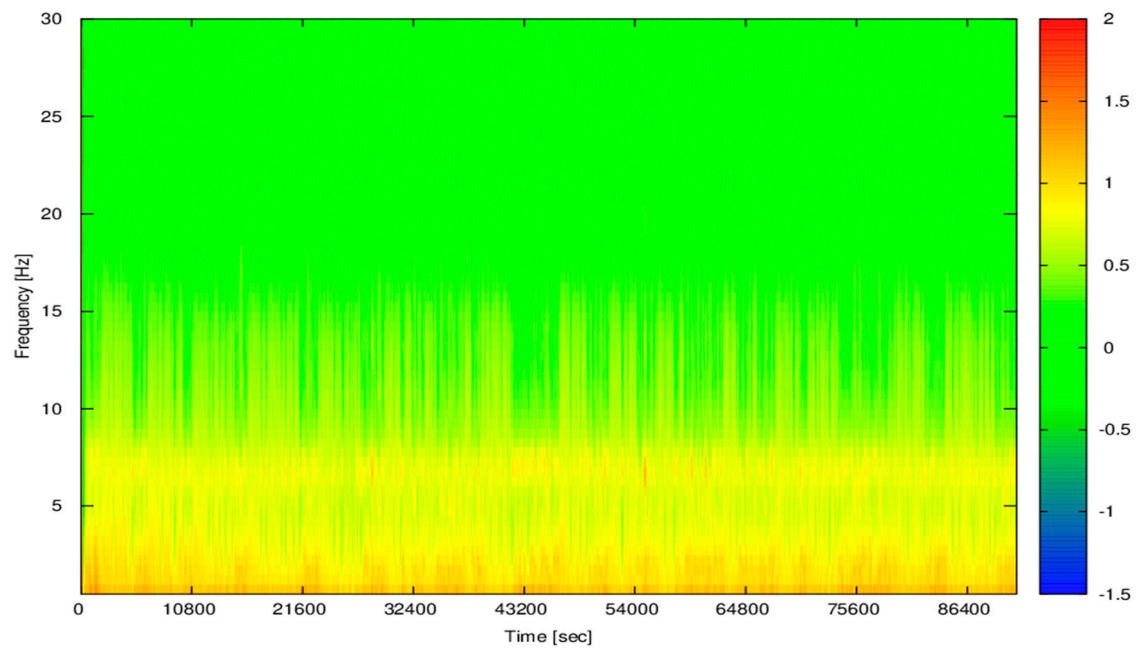


Figure S2

A)



B)



C)

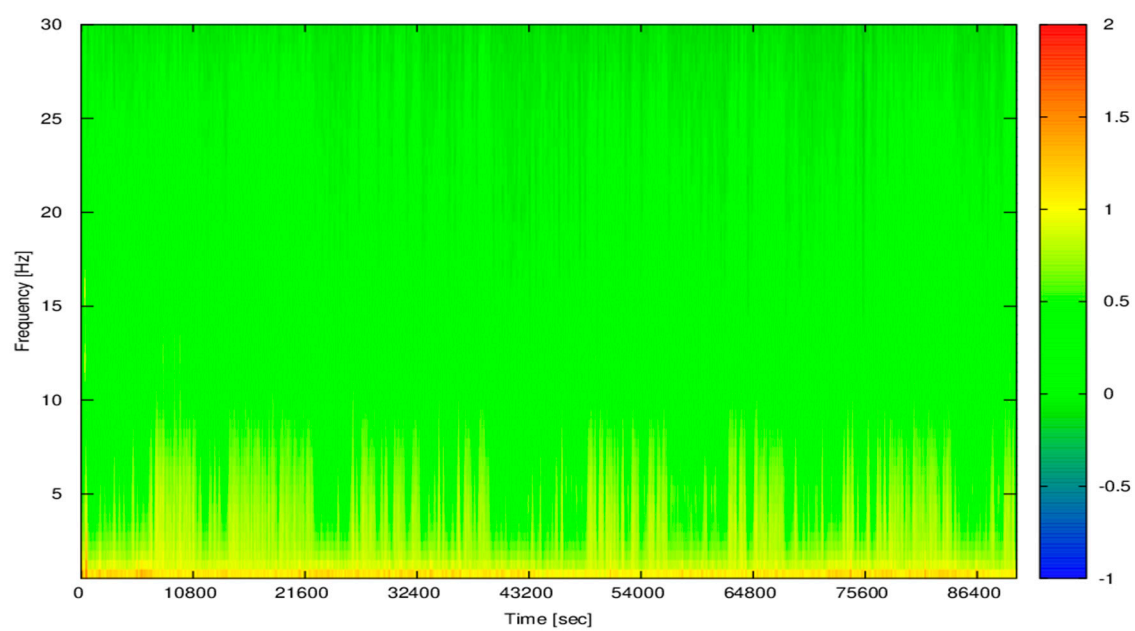
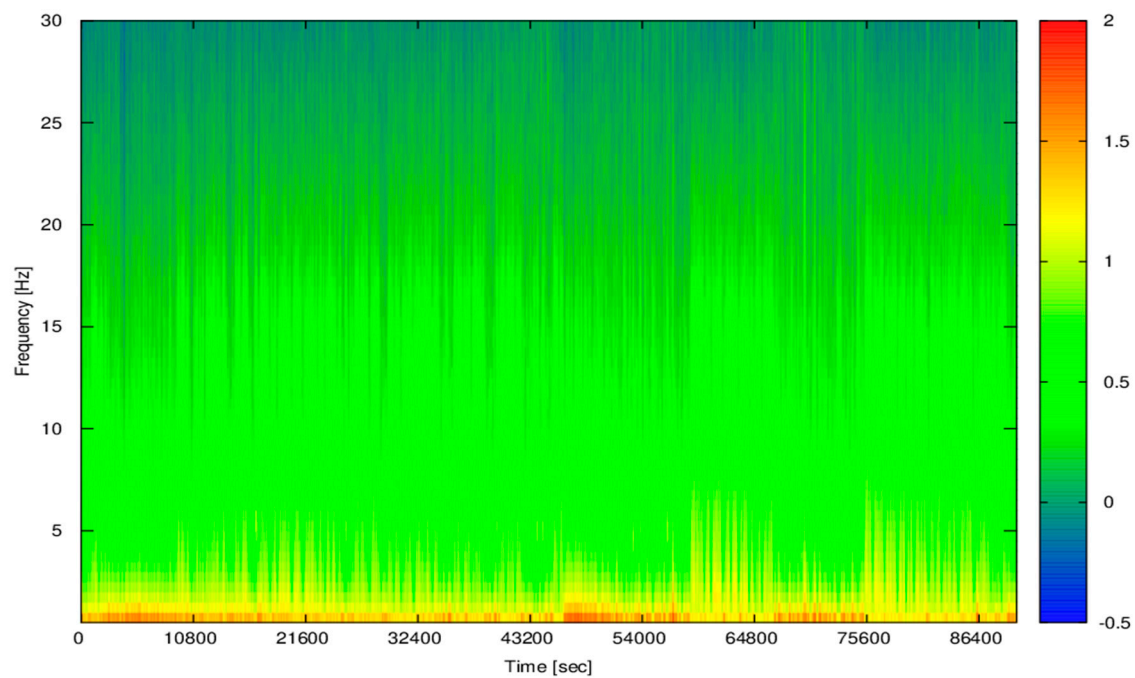
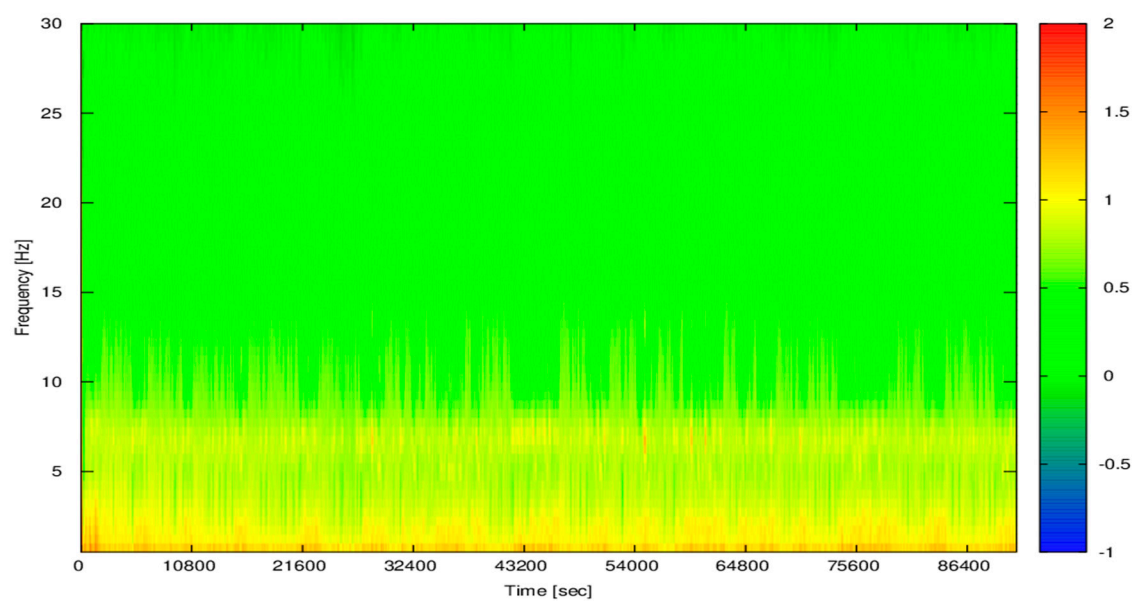


Figure S3

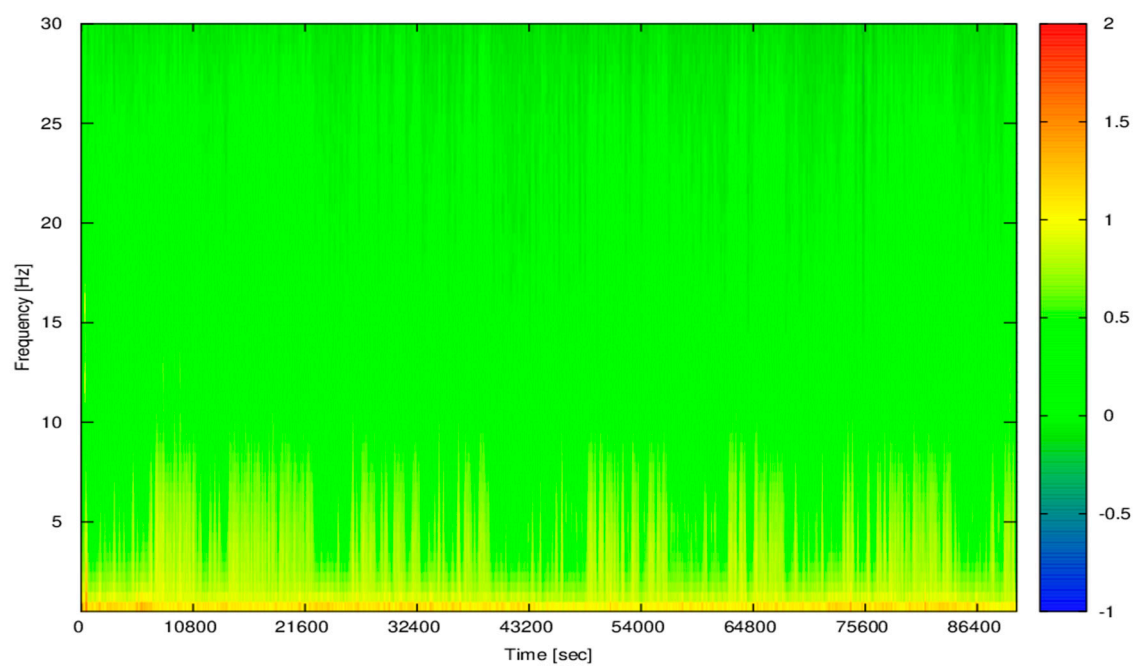
A)



B)



C)



Text to figures

Suppl. S1 The effect of prenatal stress on spectral power of beta-1, delta, and theta EEG bands analyzed during the 24-h period in male and female rats, respectively. Ordinate: percent of a total power of beta-1 bands (14.5–18.6Hz), delta bands (0.5– 4 Hz), and theta bands (4–8 Hz). Data are presented as mean \pm SD. * $p < 0.05$ vs. LD-group

Suppl. S2 Representative multi-taper spectrogram from the left+right FC over a 24-h recording for male A) C-veh group, B) PNS-veh, C) PNS-Pir group, respectively, during the light phase of the light-dark cycle. Different colors show different power values (see left legend bar). Ordinate: frequency; Abscissa: time.

Suppl. S3 Representative multi-taper spectrogram from the left+right FC over a 24-h recording for female A) C-veh group, B) C-Pir, C) PNS-veh, D) PNS-Pir group, respectively. Different colors show different power values (see left legend bar). Ordinate: frequency; Abscissa: time.