

Supplemental materials

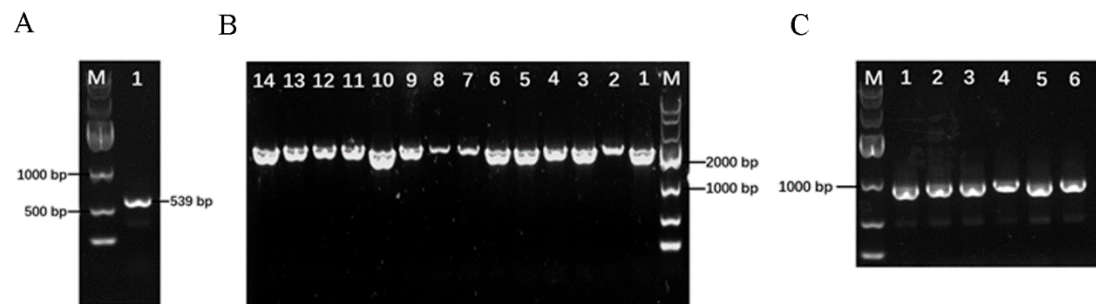


Figure S1. Results of agarose gel electrophoresis. (A) Amplification analysis of the genes encoding BMGlv2. Lane M, DNA marker; Lane 1, PCR product of genes encoding BMGlv2. (B) Colony PCR products for verification of DH5α transformants of PCBHG-BMGlv2. Lane M, DNA marker; Lane 1-14, Positive colony PCR products of DH5α transformants of PCBHG-BMGlv2, including genes encoding BMGlv2 and partial expression vector (about 2000 bp). (C) PCR products for verification of genomes of BMGlv2 transformants in *T. reesei* Tu6. Lane M, DNA marker; lane 1-6, Positive PCR products of genomes of BMGlv2 transformants in *T. reesei* Tu6, including genes encoding BMGlv2 and partial expression vector (about 800 bp).