

## Supplementary Tables

**Table S1: List of antibodies used in the study**

Markers	Compagnies	labelling	Clone	Lot
<b>CD45</b>	BD	BUV805	HI30	7205769
<b>CD3</b>	BD	PE-CF594	UCHT1	9102751
<b>CD4</b>	BD	FITC		41807
<b>CD8</b>	BD	BV786	RPA-T8	8149724
<b>CD161</b>	BD	PerCP	HP-3G10	B235672
<b>CD196</b>	BD	PE		2124684
<b>CD56</b>	BD	BUV395	NCAM16.2	6055836
<b>CD16</b>	BD	PerCP-Cy5.5	3G8	2137566
<b>TCRgd</b>	BD	PE		41154
<b>TCRValpha7.2</b>	MACS	APC		5190813035
<b>HLA-DR</b>	BD	BUV395	G46-6	6119962
<b>Live-DEAD</b>	invitrogen	Violet dead		2116142
<b>CD15</b>	BD	BV711	W6D3	9206724
<b>CD14</b>	BD	PE-Cy7		7250714
<b>CD11b</b>	MACS	PerCP-Vio700	REA713	5180611205
Intracellular				
<b>IL-17A</b>	BD	BV510	BL168	B262925
<b>INF<math>\gamma</math></b>	BD	BV650	4S.B3	9142880

**Tableau S2: List of Elisa kits used in the study**

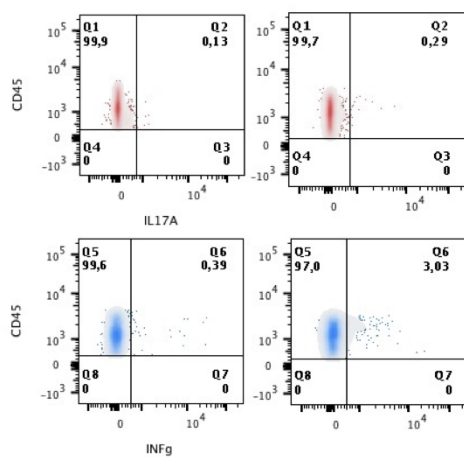
<u>Markers</u>	<u>Compagnies</u>	<u>Catalog N</u>	<u>Lot</u>
MMP-2	RD systems	DY902	P218675
TIMP-2	RD systems	DY971	P182406
MMP-9	RD systems	DY911-05	P217702
TGF-β1	RD systems	DY240	P196660
IL-6	RD systems	DY206-05	P219259
IL-22	RD systems	DY782-05	P103191
Pro-Collagen1A1	RD systems	DY6220_05	P221260
TIMP-1	RD systems	DY970-05	P221002
IL-17A	RD systems	DY317-05	P100117

## Supplementary Figures

Figure S1

Negative control for intracellular cytokine production for IL-17A and INF $\gamma$

## Blood

FMO IL17A/ INF $\gamma$ 

Liver

FMO IL17A/ INF $\gamma$ 