

S1A.

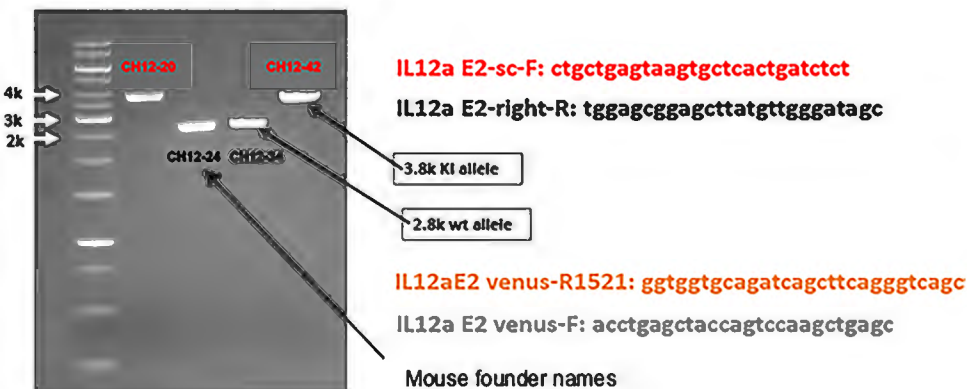
Locations of PCR primers.

KI allele PCR



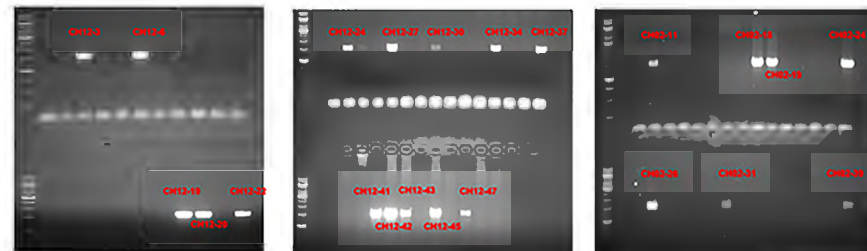
Sizes of PCR products.

PCR product of the KI allele (3.814k) with primer set IL12a E2-sc-F (red arrow) and IL12a E2-right-R (dark arrow) covering the KI cassette and the HR junctions are sequenced and confirmed to be correct on two F0 mice: CH12-20 and CH12-42



S1B.

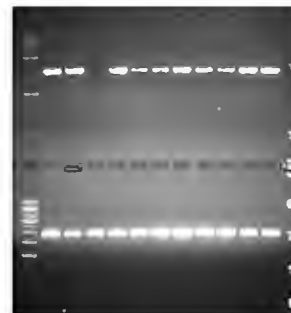
Left Arm PCRs



Primer set: IL12a E2-sc-F + IL12aE2 venus-R1521 (PCR amplicon=1521bp) PCR enzyme: GXL

Total 22 pups are positive on left arm: CH12- 3, 6, 19, 20, 22, 24, 27, 30, 34, 37, 41, 42, 43, 45, 47, CH02- 11, 18, 19, 24, 26, 31, 39

Right Arm PCRs



All F0 positive for the left arm HR event are also positive for the right arm HR event, except CH12-19:
 CH12- 3, 6, 19, 20, 22, 24, 27, 30, 34, 37, 41, 42, 43, 45, 47
 CH02- 11, 18, 19, 24, 26, 31, 39

Primer set: IL12a E2 venus-F + IL12a E2-right-R, 1845bp PCR enzyme: GXL