



Article

Preclinical Assessment of the Combination of PSMA-Targeting Radionuclide Therapy with PARP Inhibitors for Prostate Cancer Treatment

Eline A. M. Ruigrok ^{1,2}, Nicole S. Verkaik ³, Erik de Blois ¹, Corrina de Ridder ^{1,2}, Debra Stuurman ^{1,2}, Stefan J. Roobol ^{1,3}, Dik C. Van Gent ³, Marion de Jong ^{1,†}, Wytse M. Van Weerden ² and Julie Nonnekens ^{1,3,*}

Supplemental figures

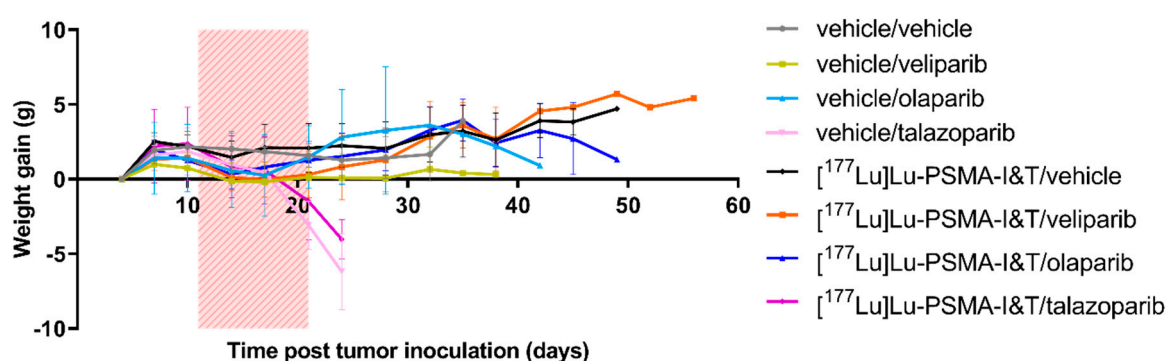


Figure S1. Weight gain over time of mice from the *in vivo* study (see Figure 3).

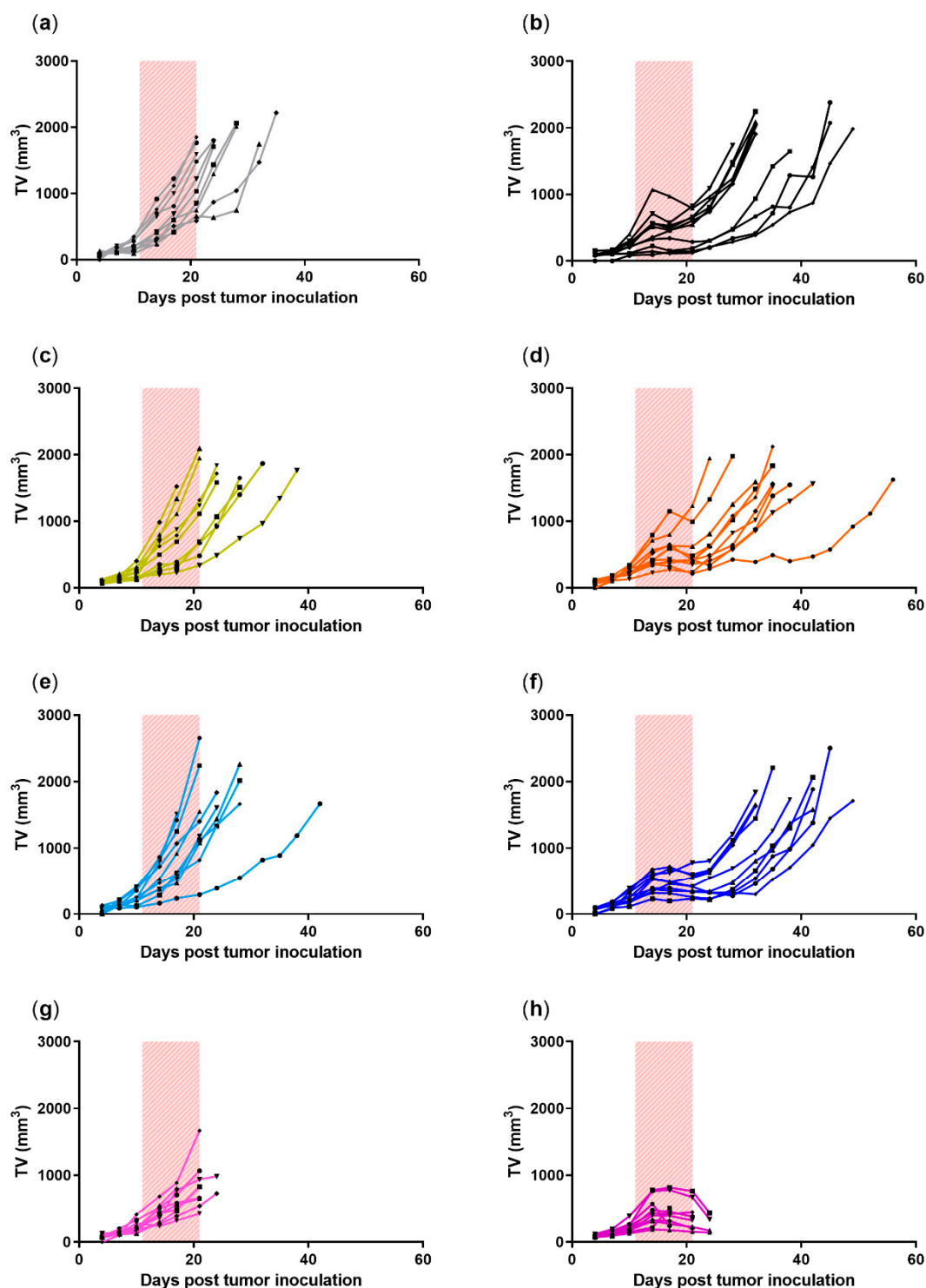


Figure S2. Tumor growth of individual mice in separate graphs per group. (a) Group1 vehicle/vehicle, (b) group 2 [^{177}Lu]Lu-PSMA-I&T/vehicle, (c) group 3 vehicle/veliparib, (d) group 4 [^{177}Lu]Lu-PSMA-I&T/veliparib, (e) vehicle/olaparib, (f) [^{177}Lu]Lu-PSMA-I&T/olaparib, (g) vehicle/talazoparib and (h) group 8 [^{177}Lu]Lu-PSMA-I&T/talazoparib. The red box indicates the treatment period with one injection of [^{177}Lu]Lu-PSMA-I&T or vehicle at day 11 and subsequent daily dosing by oral gavage of the PARPi or vehicle from day 11 until day 21.