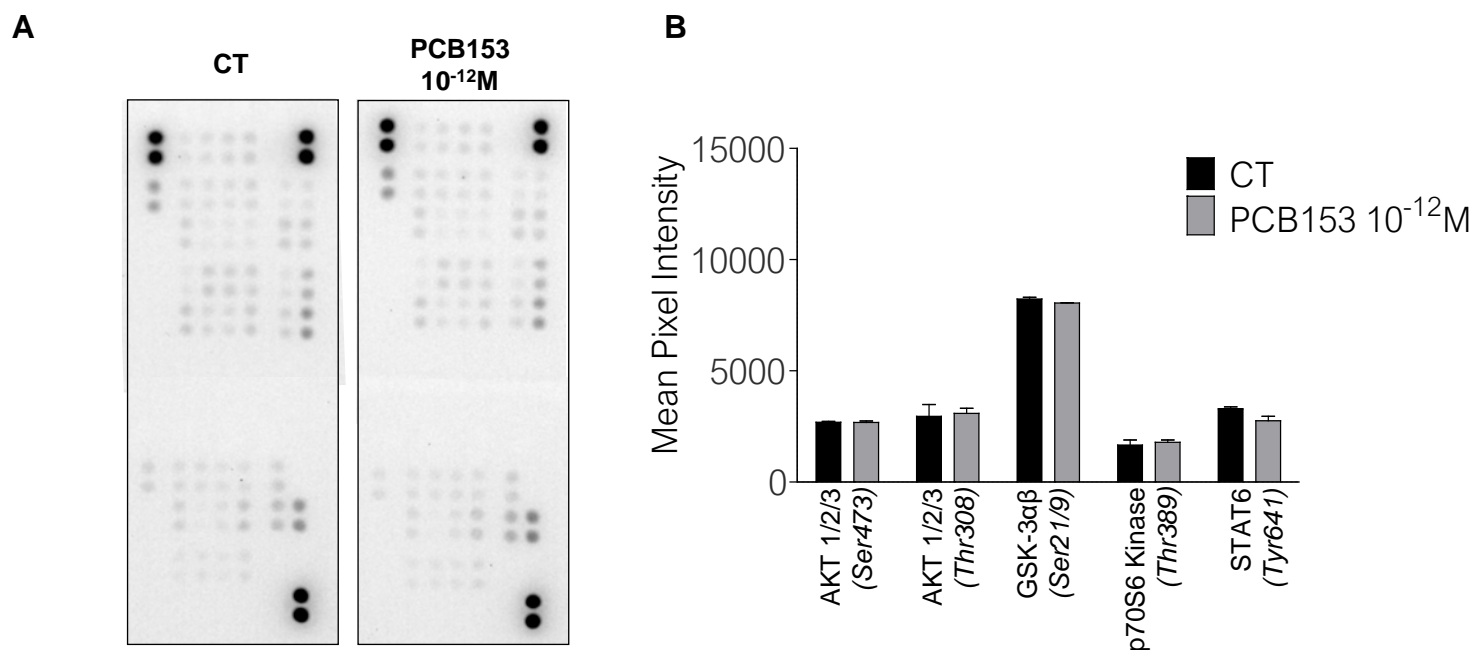
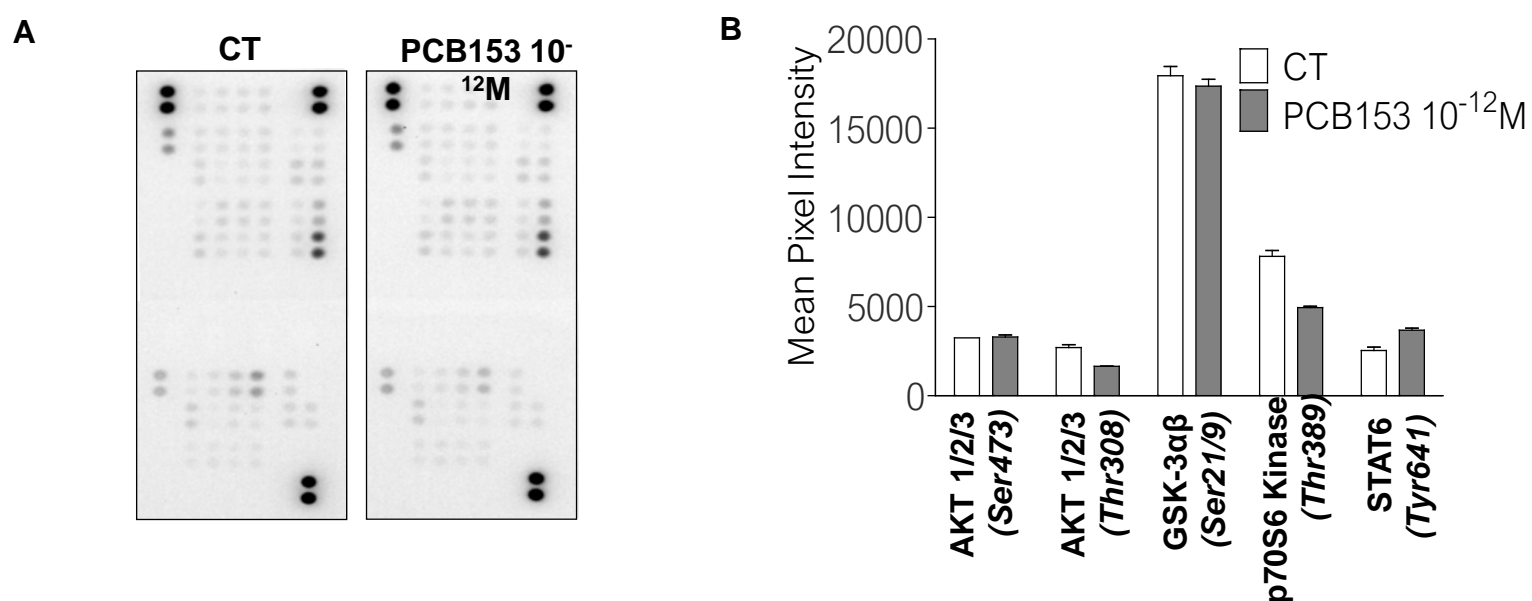


**Figure S1:** IncuCyte® cytotoxicity assay of **(A)** DU145 and **(B)** MCF7 after treatment of 80h with either Aldrin ( $10^{-12}\text{M}$ ,  $10^{-9}\text{M}$  or  $10^{-6}\text{M}$ ), BDE28( $10^{-12}\text{M}$ ,  $10^{-9}\text{M}$  or  $10^{-6}\text{M}$ ), PCB153( $10^{-12}\text{M}$  or  $10^{-9}\text{M}$ ), PFOA( $10^{-12}\text{M}$ ,  $10^{-9}\text{M}$  or  $10^{-6}\text{M}$ ) or TCDD ( $10^{-12}\text{M}$  or  $10^{-9}\text{M}$ ) in comparison with cells treated with EtOH (CT). Each point represent a mean  $\pm$  SEM of triplicates. Three wells were used per replicates and 9 pictures were taken per well. One way anova compared to EtOH treated cells.

\* $p < 0,05$ ; \*\* $p < 0,005$ ; \*\*\* $p < 0,0005$

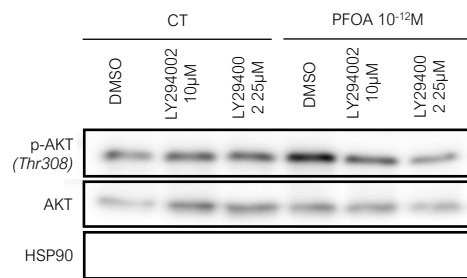


**Figure S2** Human Phospho-Kinase Array. Parallel determination of the relative levels of protein phosphorylation of a range of 43 kinase phosphorylation sites of DU145 after 48h of treatment of PCB153 ( $10^{-12}M$ ) in comparison with cells exposed with EtOH (CT) : **(A)** image and **(B)** quantification (no statistic test : two points each).

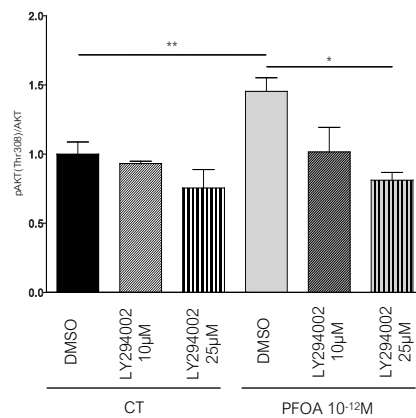


**Figure S3** Human Phospho-Kinase Array. Parallel determination of the relative levels of protein phosphorylation of a range of 43 kinase phosphorylation sites of MCF7 after 48h of treatment of PCB153 ( $10^{-12}M$ ) in comparison with cells exposed with EtOH (CT) : **(A)** image and **(B)** quantification (no statistic test : two points each).

A



B



**Figure S4:** Western blot of phospho-AKT(Thr308), total AKT and HSP90 of MCF7 protein extract after 48h of treatment with PFOA ( $10^{-12}M$ ) and either DMSO, LY294002 (10µM or 25µM) overnight exposition. B) Quantification of protein level of three different western blot experiments. T test. \* $p<0,05$ ; \*\* $p<0,005$ ; \*\*\* $p<0,0005$

Protein	Source	Identifier
pAKT (Ser473)	Cell Signaling	4058
pAKT (Thr308)	Cell Signaling	4056
AKT total	Cell Signaling	4685
phopsho-GSK3 $\alpha$ $\beta$ (Ser21/9),	Cell Signaling	8566
GSK3 $\alpha$ $\beta$ total	Cell Signaling	5676
phospho-p70S6Kinase (Thr389)	Cell Signaling	9234
p70S6Kinase total	Cell Signaling	2708
HSP90	Santa Cruz	sc-13119
Actine	Fisher Scientific	MA5-15739

**Table S1** : List of antibodies used for Western Blot

Gene	Sequence (5' -> 3')	
PlexinD1	F	AATGGGCGGAACATCGTCAAG
	R	CGAGACTGGTTGGAAACACAG
RPLP0	F	AGGTGTAATCCGTCTCCACAGA
	R	GCATCAGTACCCAATTCTATCAT

**Table S2** : Primers used for RT-qPCR.