

Supplementary Figures

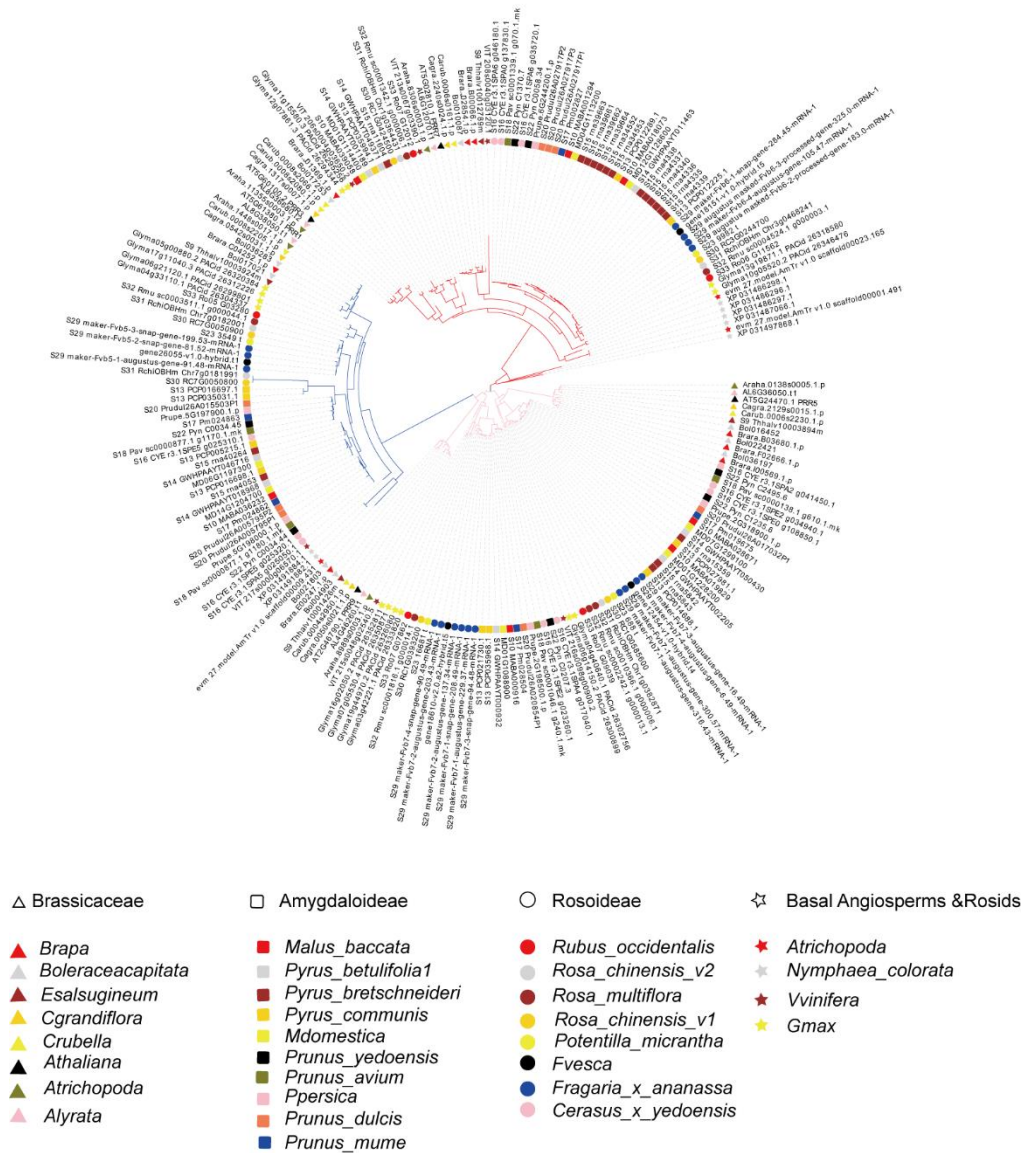


Figure S1. Phylogeny of clock genes from 2 basal angiosperm species, 18 Rosaceae species, 8 Brassicaceae species, and 2 Basal Rosids species. Different branch colors represent different clades.

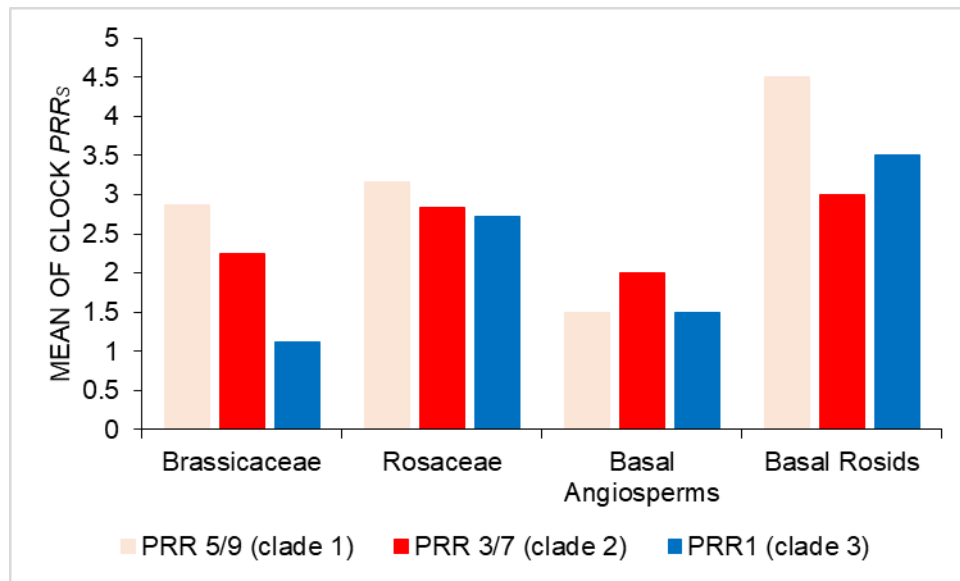


Figure S2. Mean values of the number of clock *PRRs* in each clade of 8 Brassicaceae species, 18 Rosaceae species, 2 basal angiosperm species, and 2 Basal Rosids species.

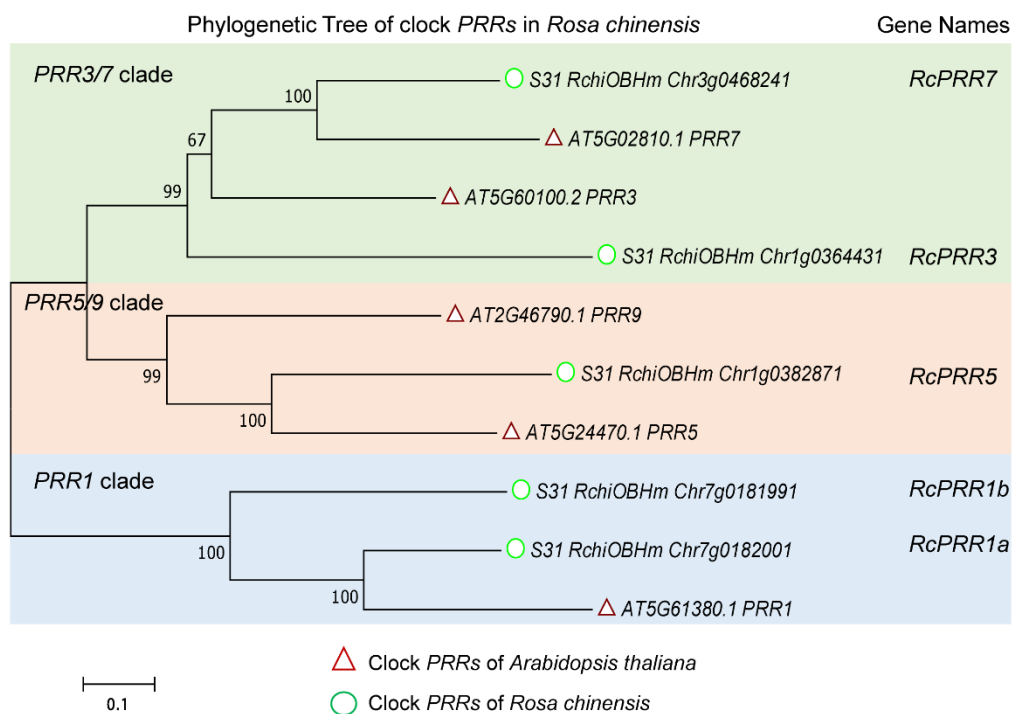


Figure S3. Phylogenetic tree of clock *PRRs* in *Rosa chinensis*.

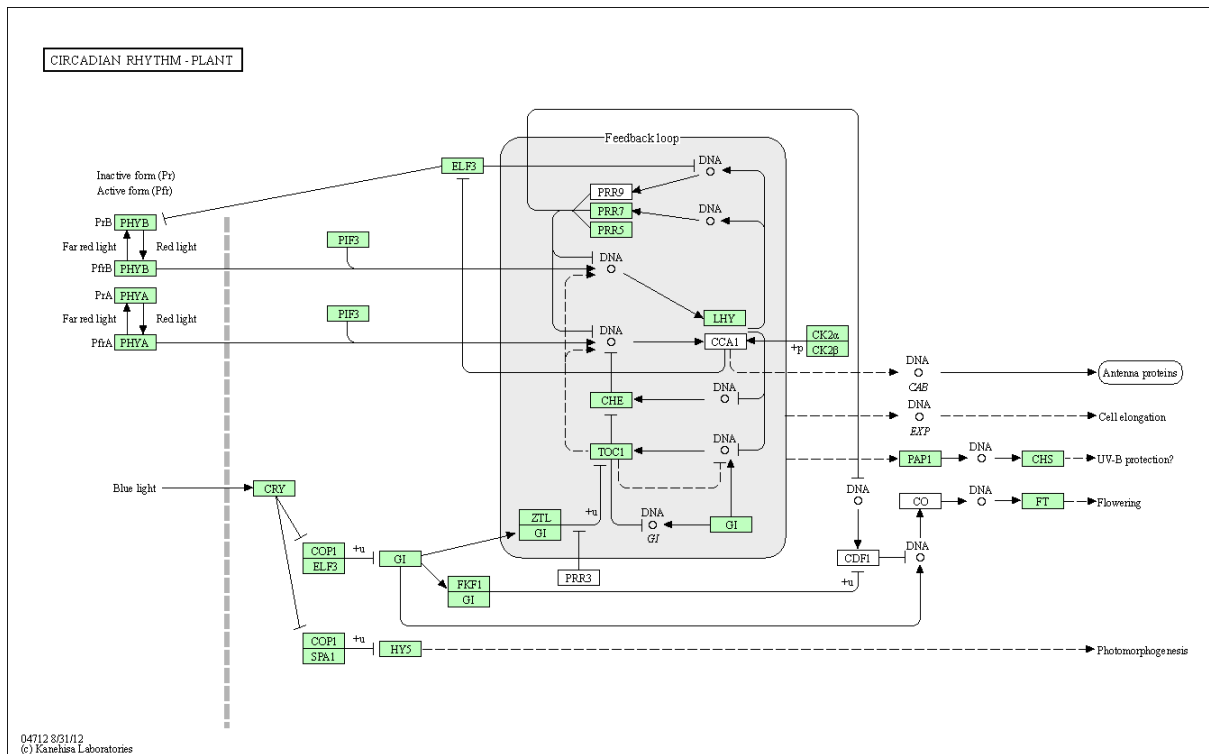


Figure S4. The pattern of clock *PRRs* genes for controlling flowering in the circadian rhythm KEGG pathway.