

Supplementary materials

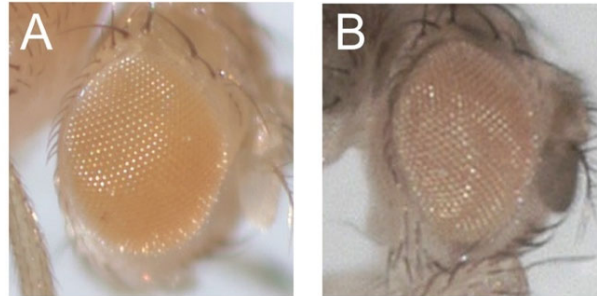


Figure S1. Eye color of *Bap55^{EY1596} Eaf6^{d06605}*. Light-yellow eye color of A) *Bap55^{EY1596}* and B) *Eaf6^{d06605}* heterozygous mutations.

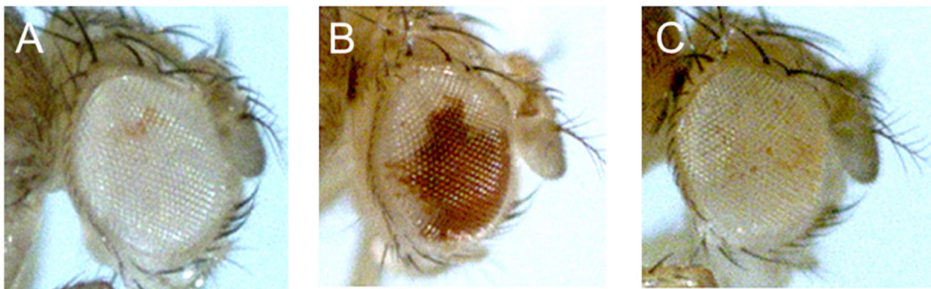


Figure S2. The 7m27 variegated phenotype. (A) Variegated phenotype of 7m27; (B) one copy of *Su(var)205* suppresses 7m27; (C) One copy of *Dom3* allele does not suppress the variegated phenotype of 7m27.

Table S1. Primer Sequences Used for Reverse Transcription-Polymerase Chain Reaction (PCR)

Gene	Forward primer	Reverse primer
<i>domino</i>	GACGGCGCTAGCTAAGGAAT	CCGCATCTTCGCTTTCTTCG
<i>pontin</i>	AAACCGAGGAGTATGTGCCG	CCATGTCGGCAGTGGAGTAG
<i>reptin</i>	GGAGATGAGCAAGACCGAGG	ATCTCTCCAGTATCGCCGGA
<i>Tip60</i>	GCGGCTTCCACATAGTAGGG	CGGCAATGAAGCACAATCTCT
<i>E(Pc)</i>	CCGTTACACACTGACCTCCC	TGGCGAAGATCAGCACAACT
<i>Yeti</i>	TATACGGAGGGAAACGCAGC	TCGACGTTGGTTAAGCCGTT
<i>YL-1</i>	GTGGAGGACTACATGCCAC	TATGGCTGCTGTGTGATCGG
<i>Eaf6</i>	GTTGGCGGACCTCATCAAGA	ACACCATTCCGCTCACTACG
<i>DMAPI</i>	GATACCGCTCTGGGAATCGG	TCTCCTCCTCCACCTGTTGT
<i>Mrg15</i>	ACCGCCAACTCTACAACCAG	TGCGCCAAATACTGCTCAGA
<i>Gas41</i>	ACGAGATTACCGAGACCGGA	ACCTTCGCCAATTCTGCCTT
<i>Rpl32</i>	GCCCAAGGGTATCGACAACA	CTTGCGCTTCTTGGAGGAGA