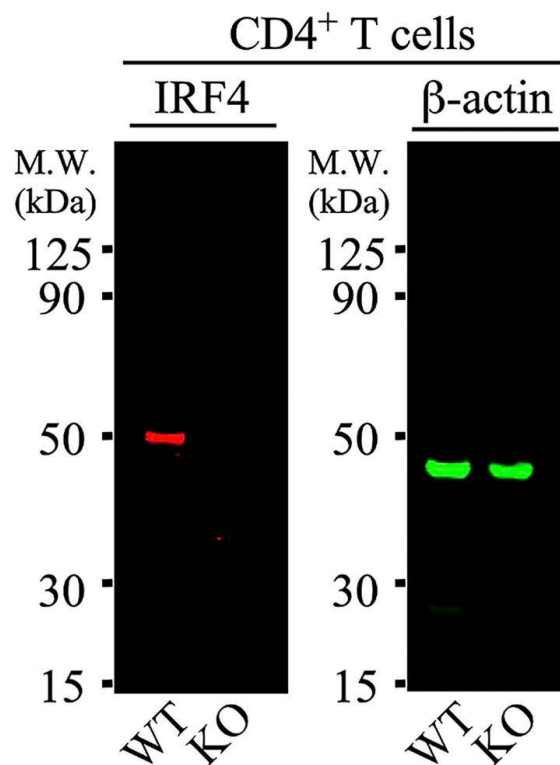


Supplementary Figure S1. Characterization of mice with targeted deletion of *irf4* in T cell. *Irf4^{fl/fl}* mice by Western blot analysis. Figure represents full-length gels of image presented as Fig. 1B.



Supplementary Figure S2. Characterization of mice with targeted deletion of *irf4* in T cell. *Irf4^{fl/fl}* mice by Western blot analysis. Figure represents full-length gels of image presented as Fig. 6C.