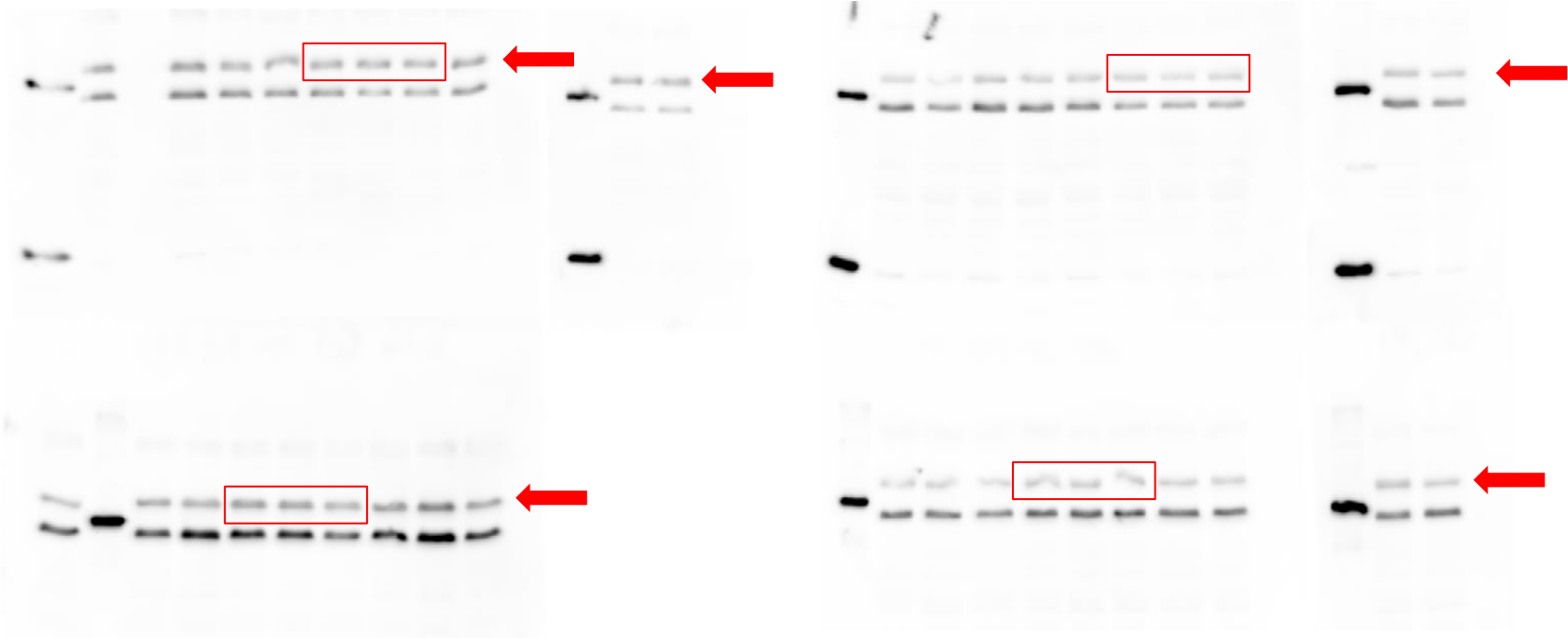


# Figure S1: IR (muscle)

The red frames on photos below indicate the 3 representatives of each group of rats, which are presented on figure 2C in the article.

SDC

GKC

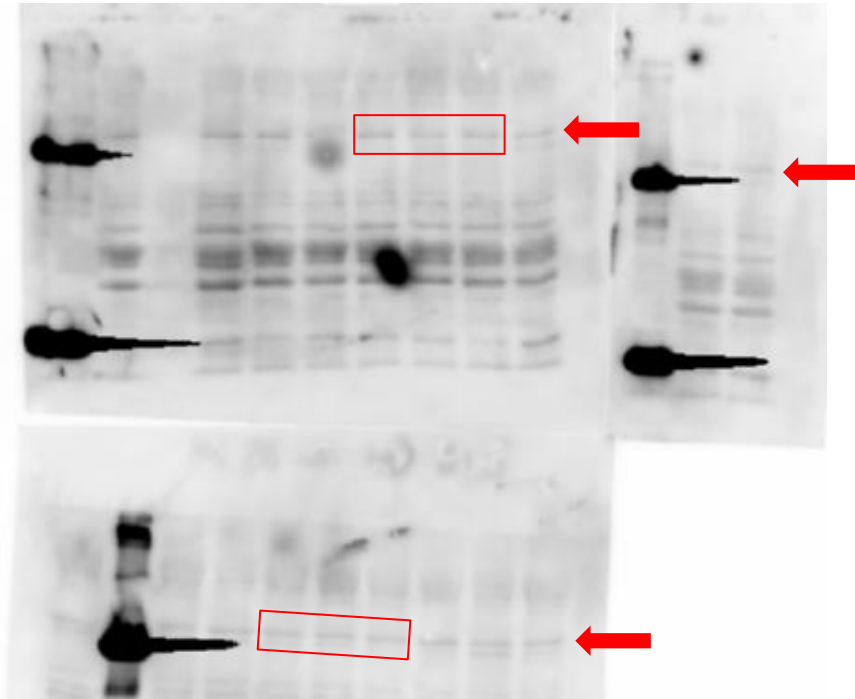


SDR

GKR

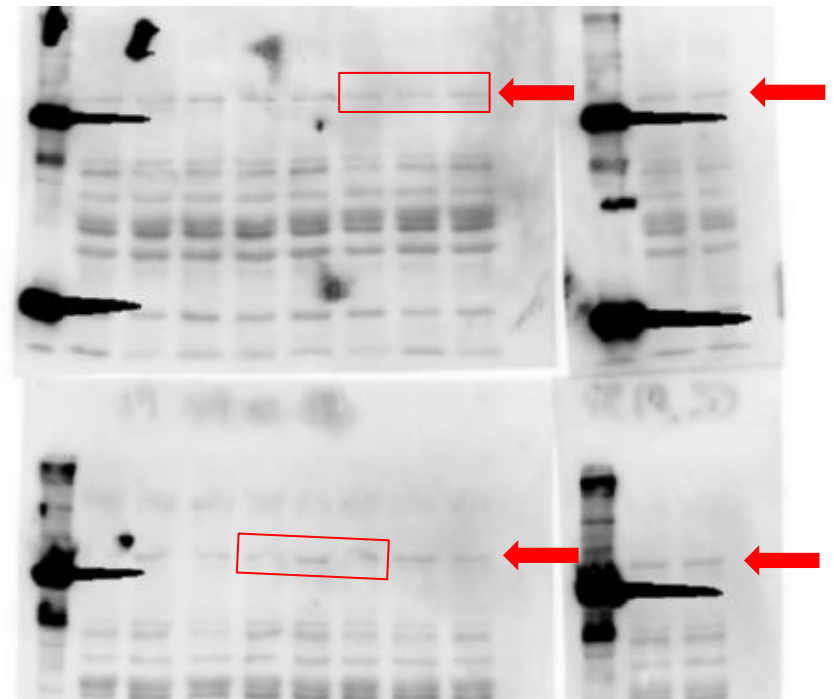
# pIR (muscle)

SDC



SDR

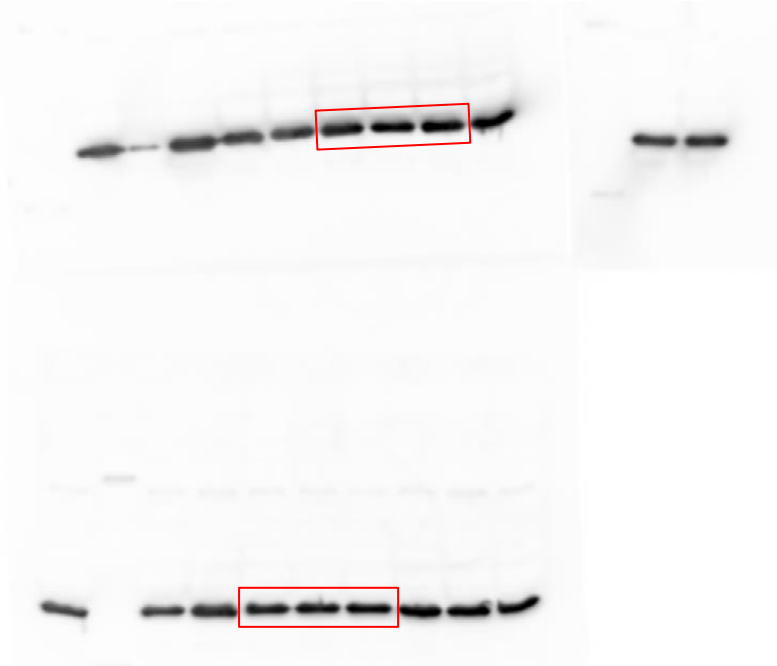
GKC



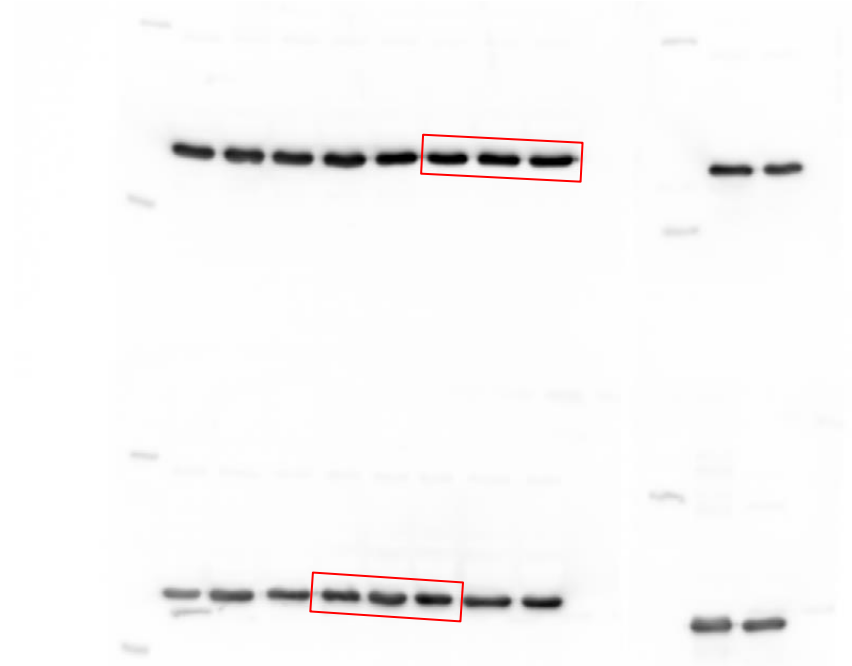
GKR

# GAPDH (muscle)

SDC



GKC



SDR

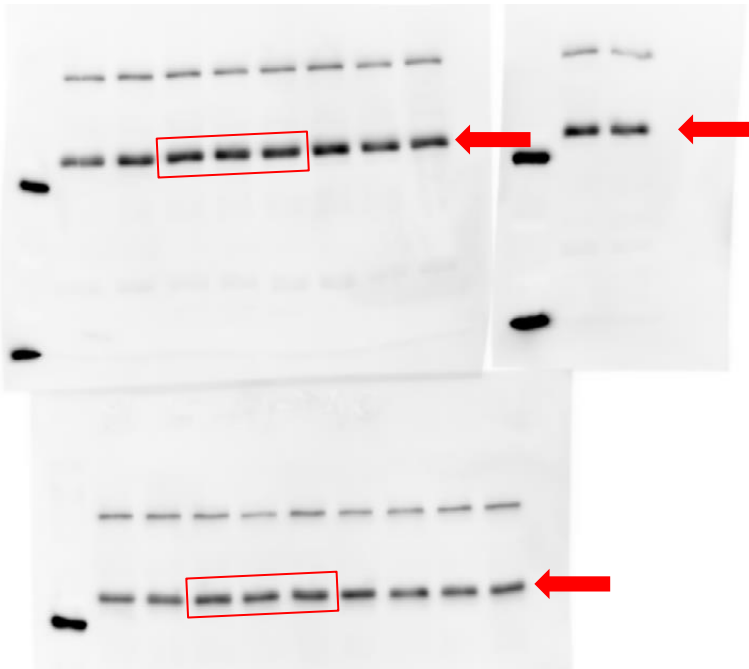
GKR

## Figure S2:

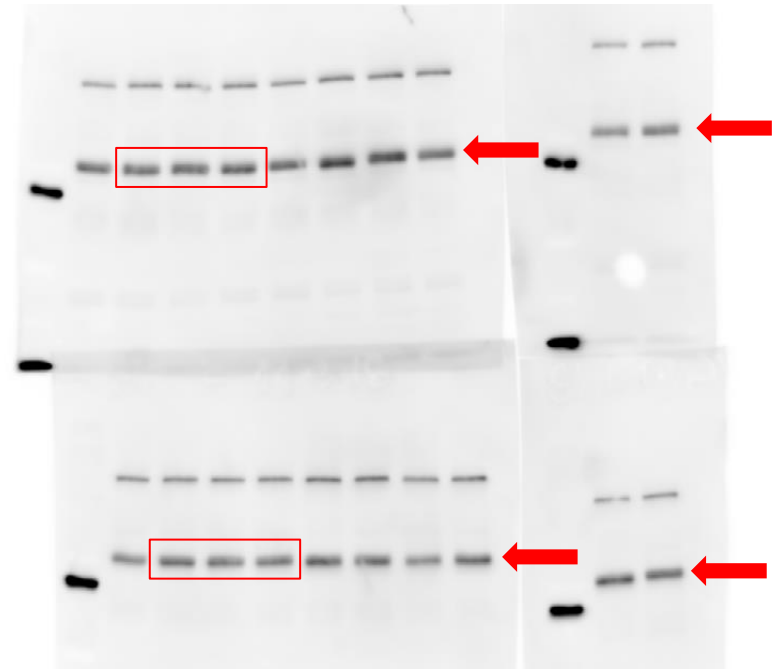
## IR (liver)

The red frames on photos below indicate the 3 representatives of each group of rats, which are presented on figure 3B in the article.

**SDC**



**GKC**



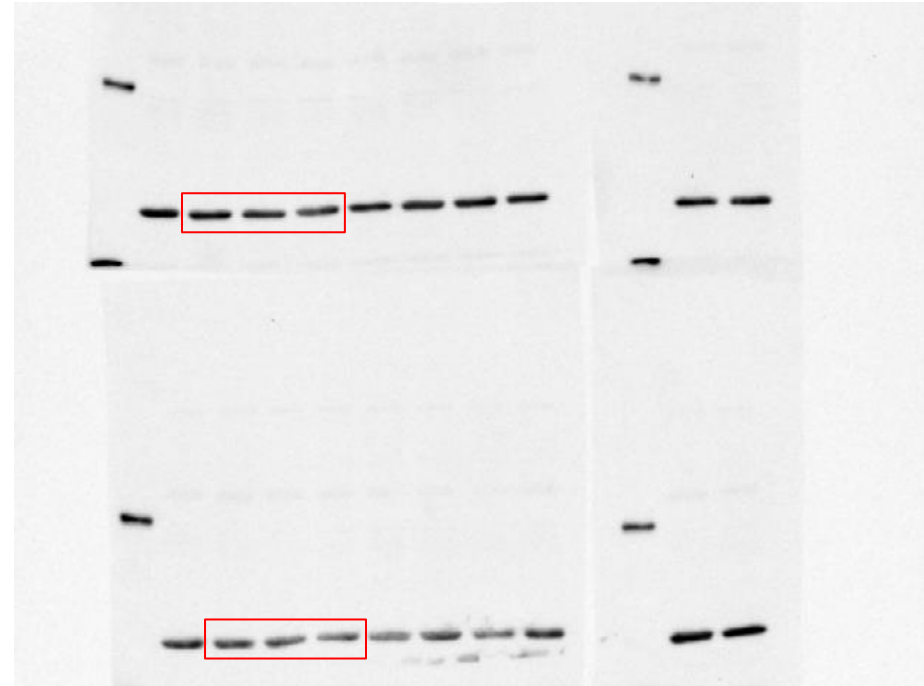
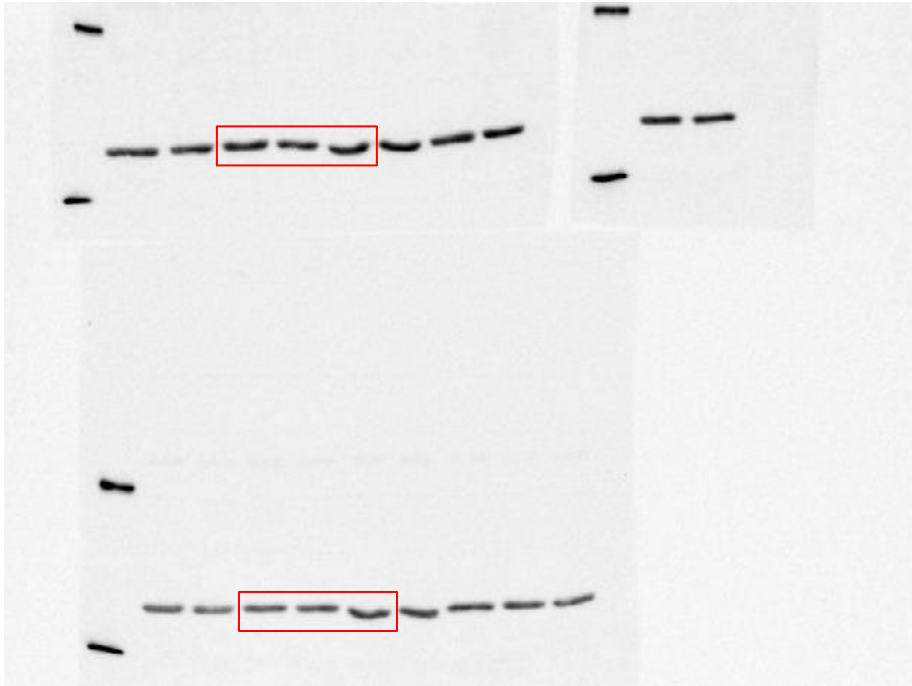
**SDR**

**GKR**

# $\beta$ actin (liver)

SDC

GKC



SDR

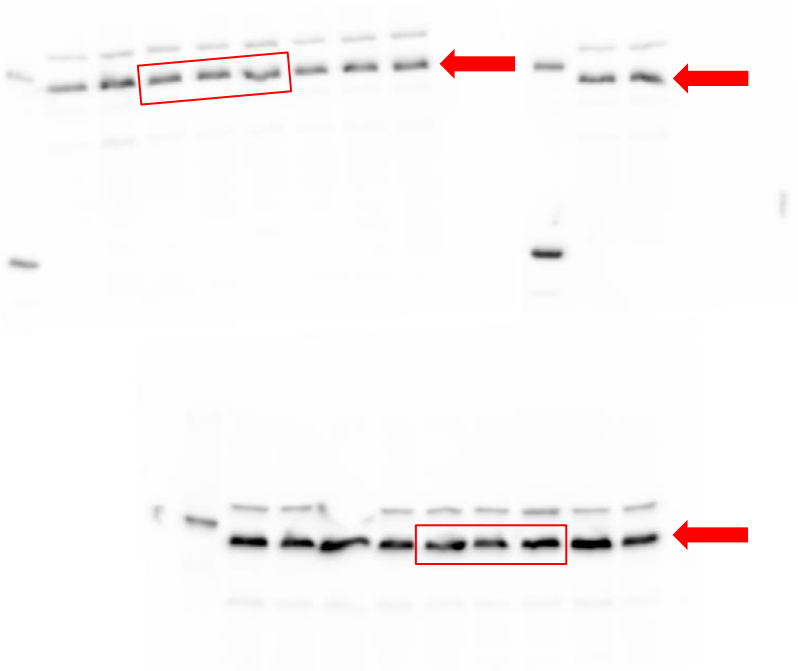
GKR

## Figure S3A:

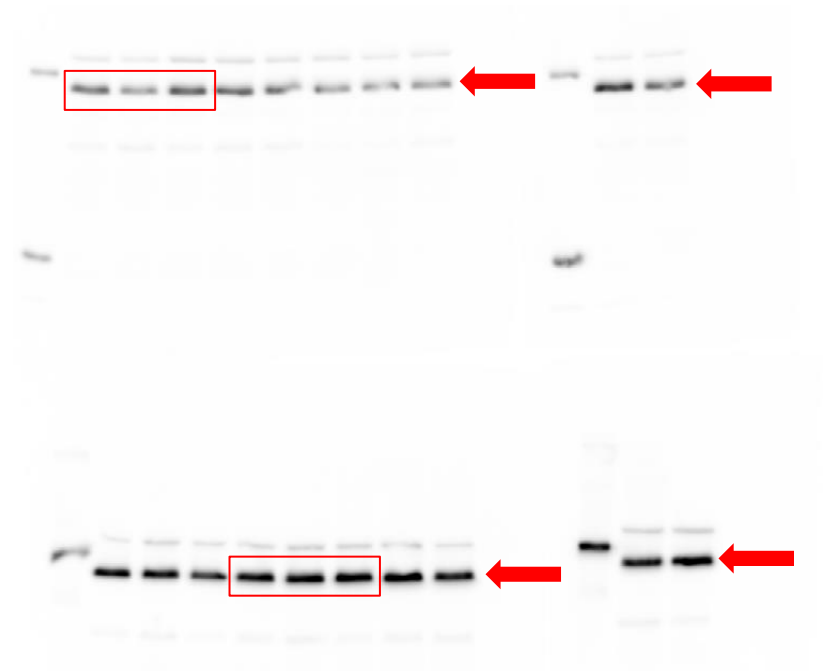
## Tug (muscle)

The red frames on photos below indicate the 3 representatives of each group of rats, which are presented on figure 4E in the article.

**SDC**



**GKC**



**SDR**



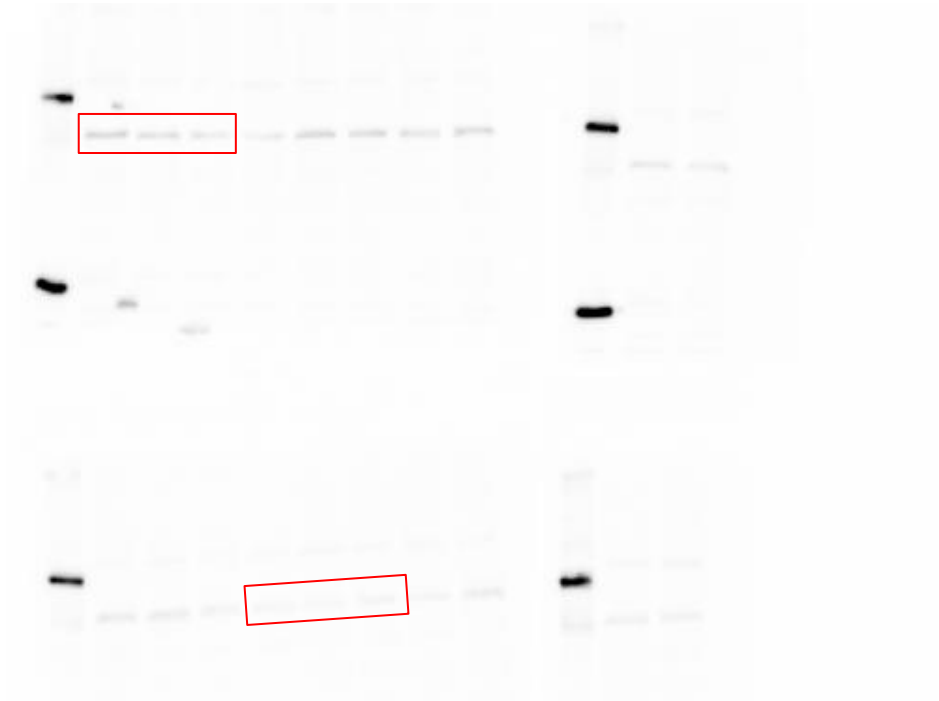
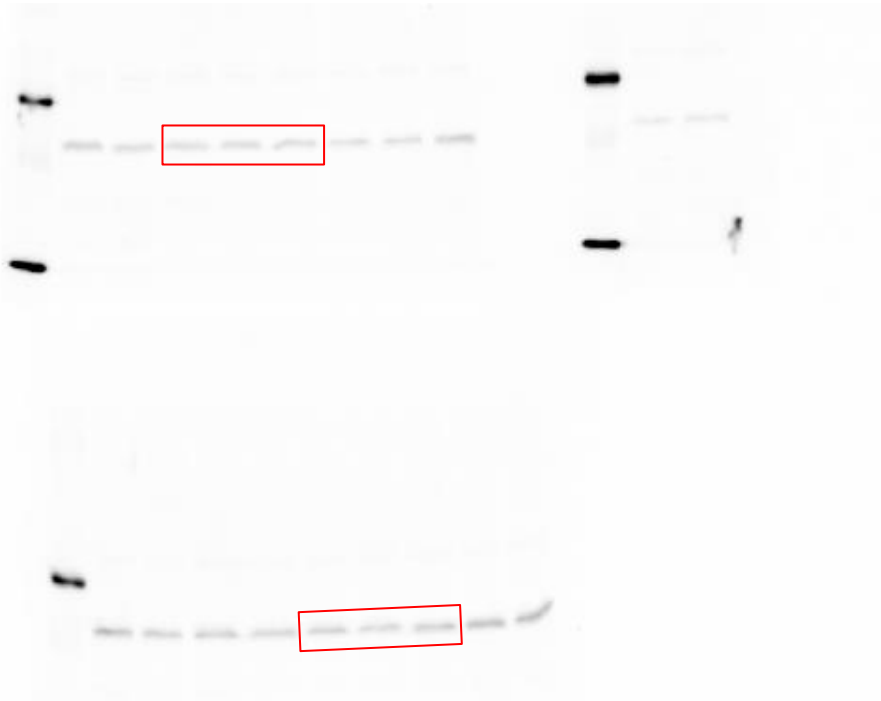
**GKR**



# Glut4 (muscle)

SDC

GKC

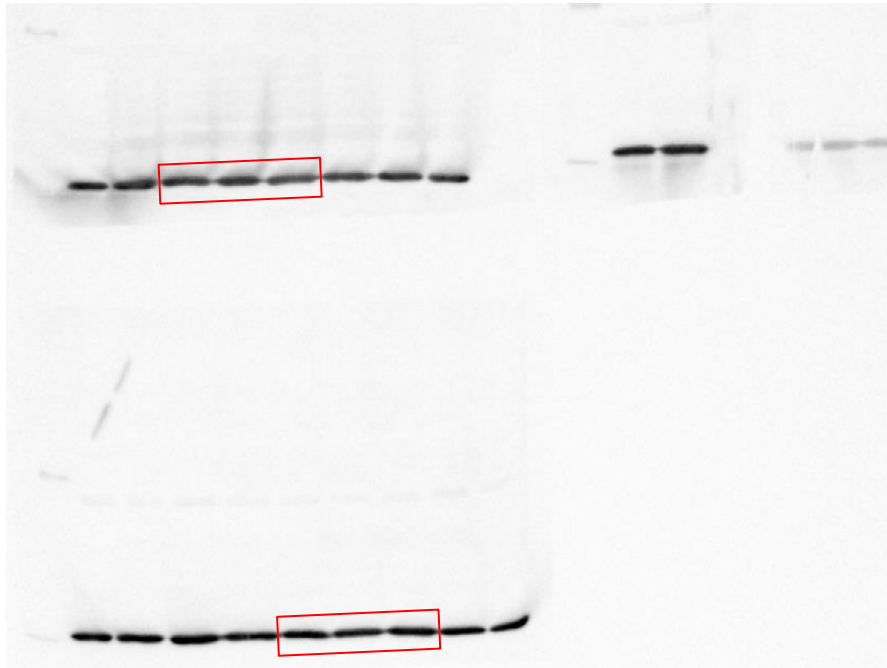


SDR

GKR

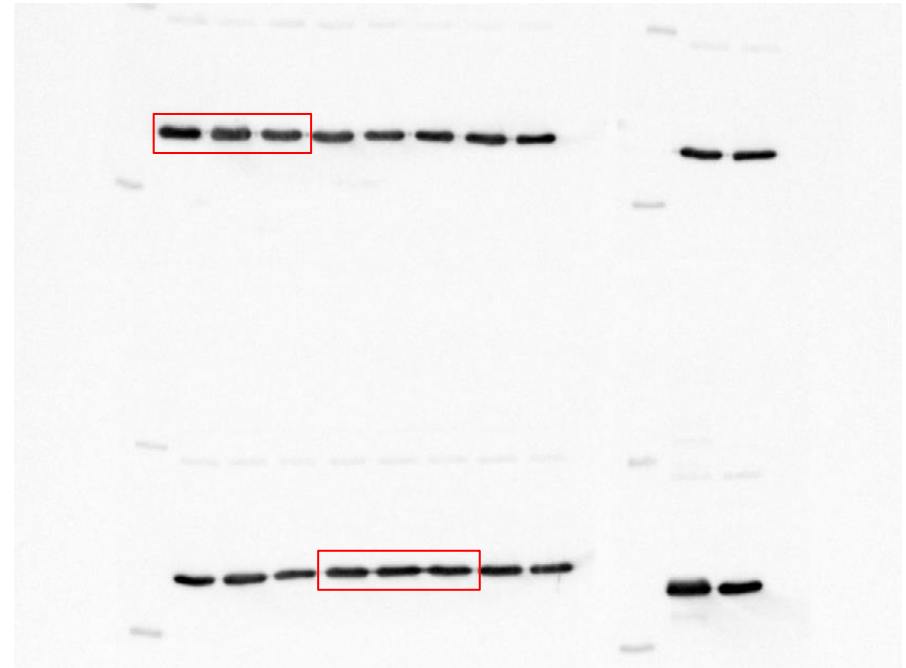
# GAPDH (muscle)

SDC



SDR

GKC



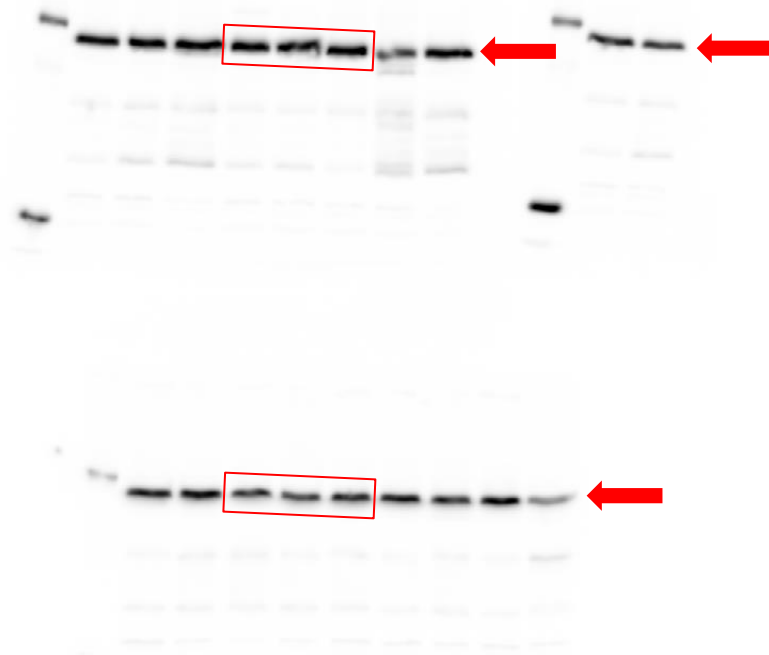


## Figure S3B:

## Tug (fat)

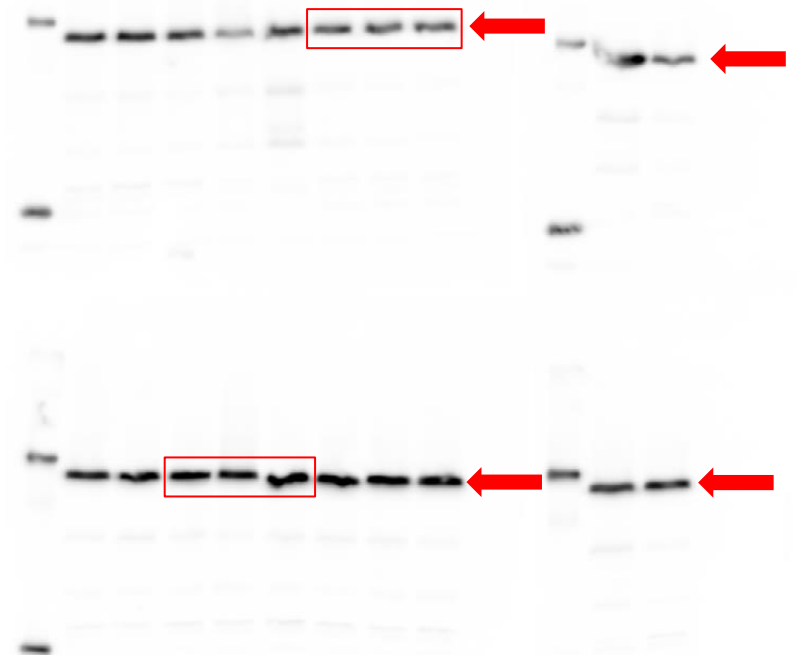
The red frames on photos below indicate the 3 representatives of each group of rats, which are presented on figure 4F in the article.

**SDC**



**SDR**

**GKC**

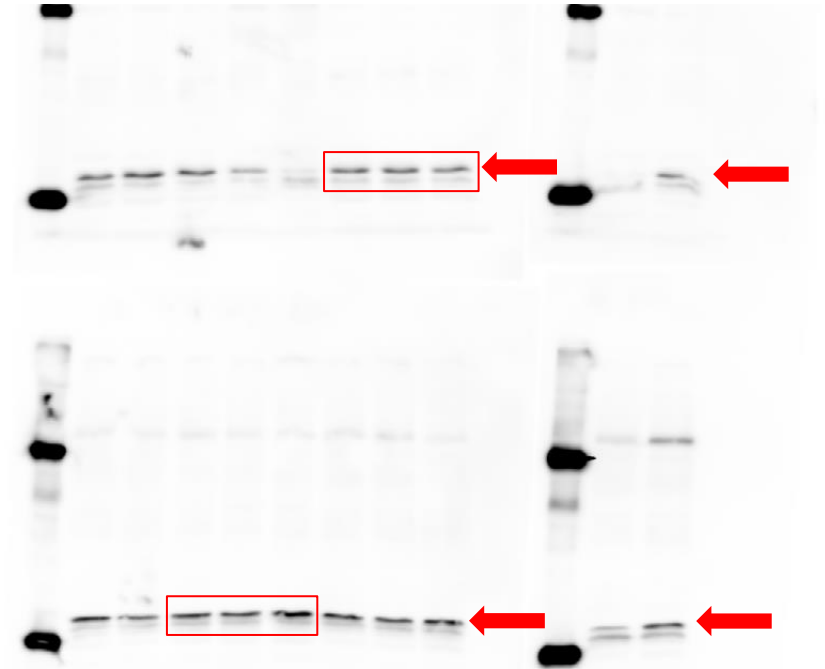
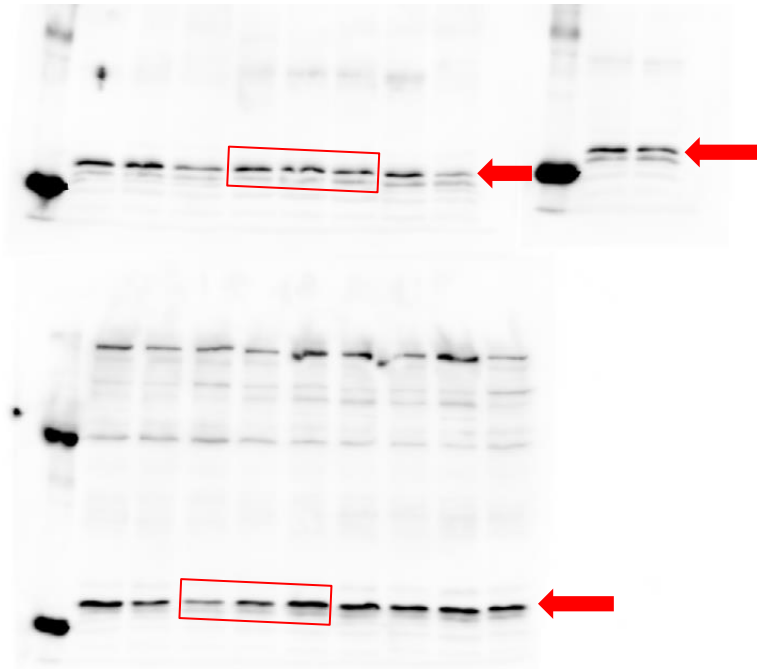


**GKR**

# Glut4 (fat)

SDC

GKC

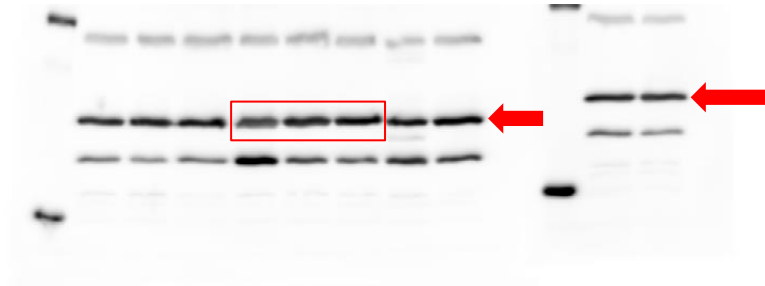


SDR

GKR

# $\beta$ actin (fat)

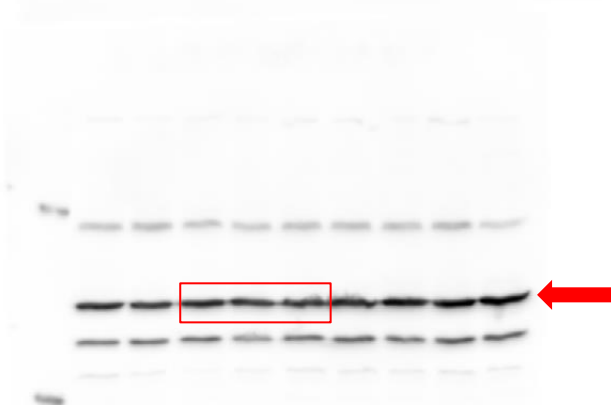
SDC



GKC



SDR



GKR

