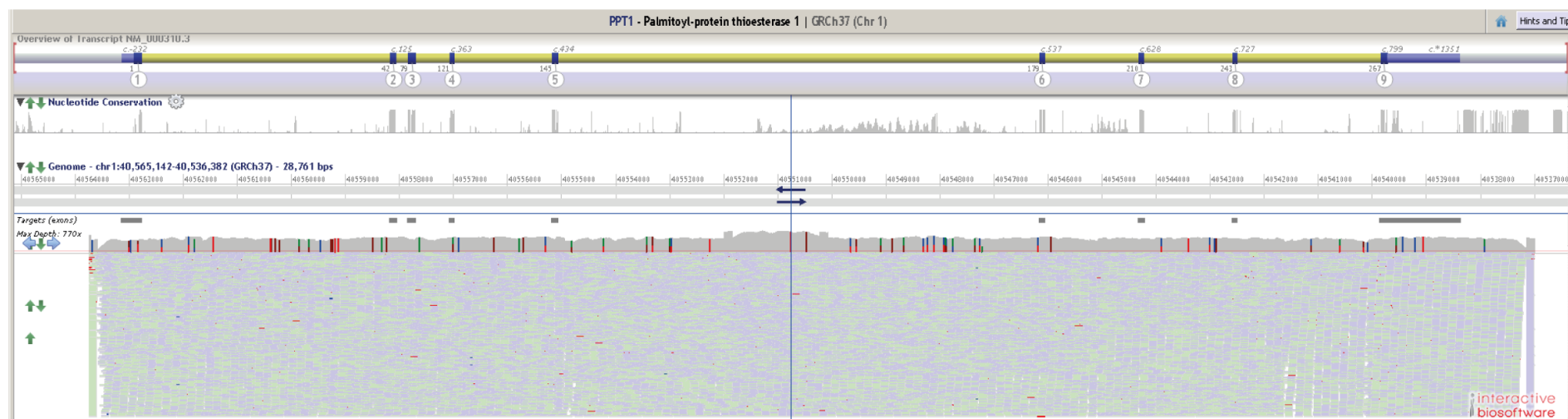


Figure S1. LR PCRs panel coverage results.

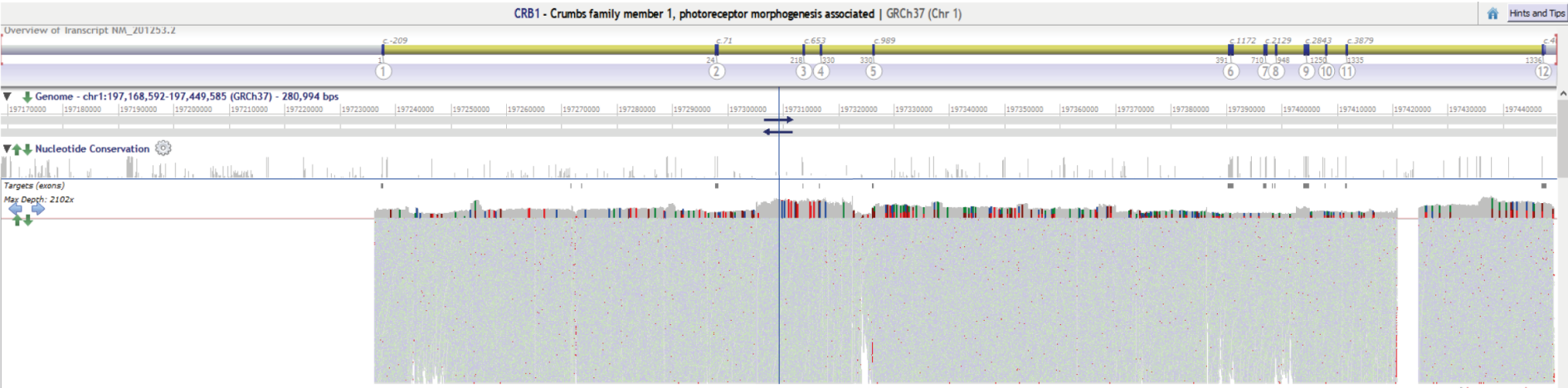
Screenshot from the Alamut Visual software showing alignment of WES assay compared to the LR PCR results for the panel loci (in the same order reported on Table 1).

The loci are *PPT1* (A), *CRB1* (B), *PCARE* (C), *EFEMP1* (D), *IMPG2* (E), *PROM1* (F), *MFSD8* (G), *CTNNA1* (H), *GUCA1A* (I), *GUCA1B* (J), *PRPH2* (K), *IMPG1* (L), *ELOVL4* (M), *RP1L1* (N), *RP1* (O), *CNGB3* (P), *KCNV2* (Q), *ATOH7* (R), *PDE6C* (S), *BEST1* (T), *C1QTNF5* (U), *PDE6H* (V), *RDH5* (W), *OTX2* (X), *NR2E3* (Y), *RLBP1* (Z), *GUCY2D* (AA), *FSCN2* (BB), *RAX2* (CC), *TIMP3* (DD), *RS1* (EE), *RPGR* (FF), and *RP2* (GG). Since *DHS6S1* is not a protein-coding locus, it is not covered by Alamut Visual. Therefore, coverage and alignment are shown on IGV (HH).

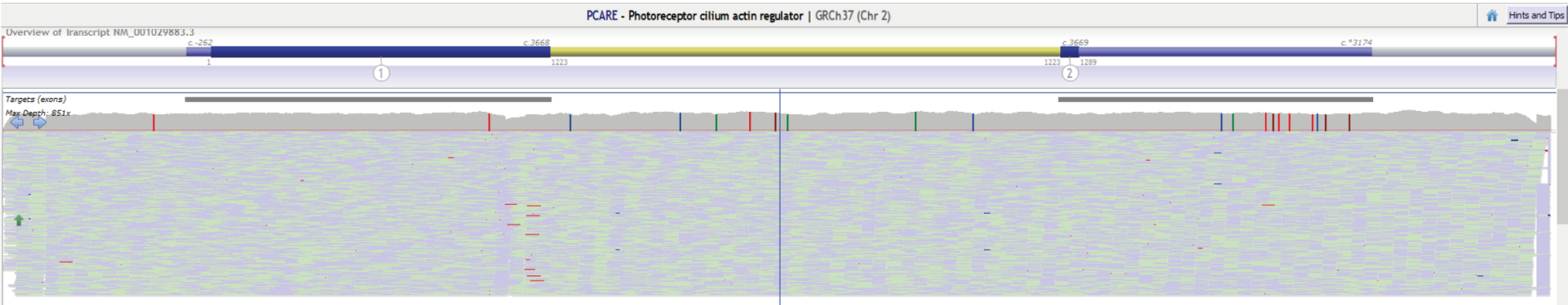
A)



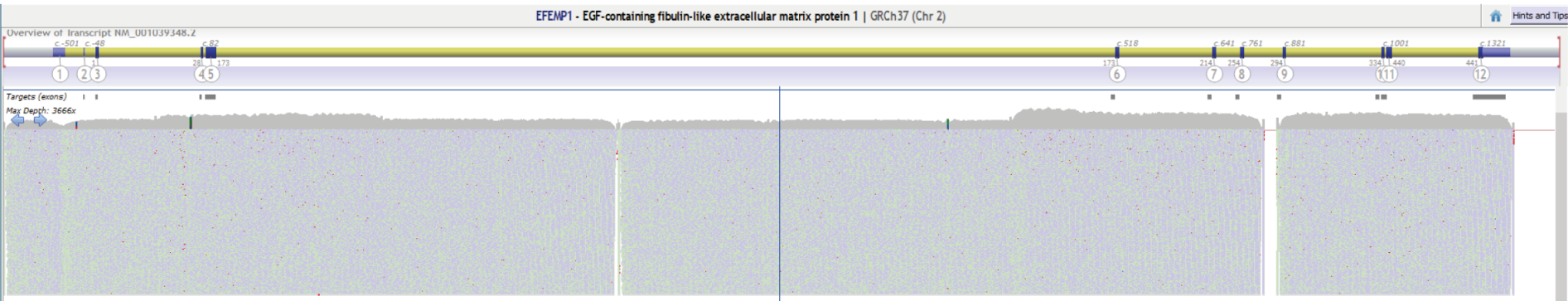
B)



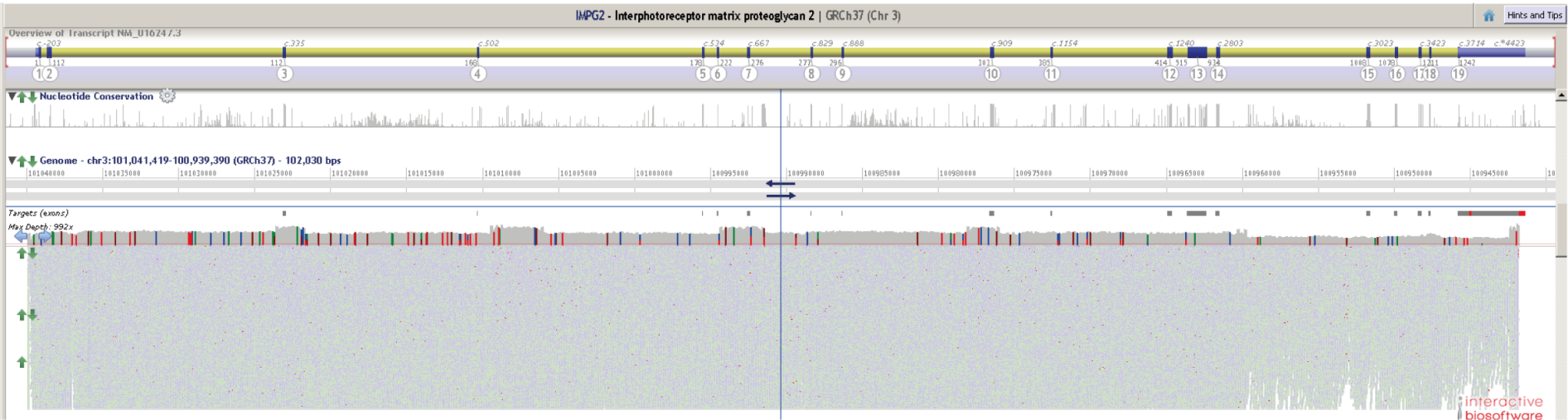
C)



D)



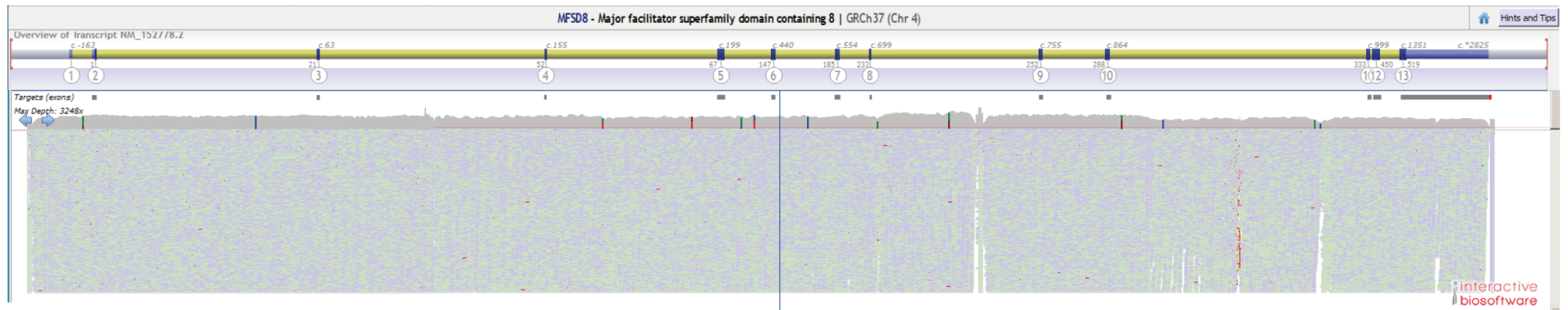
E)



F)



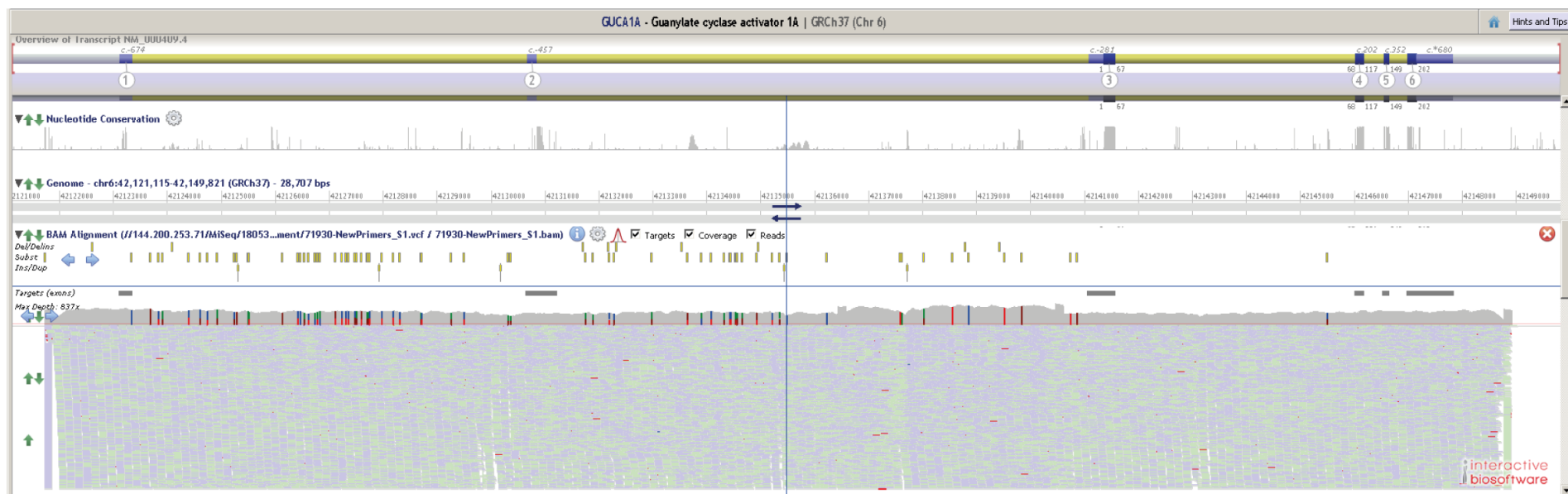
G)



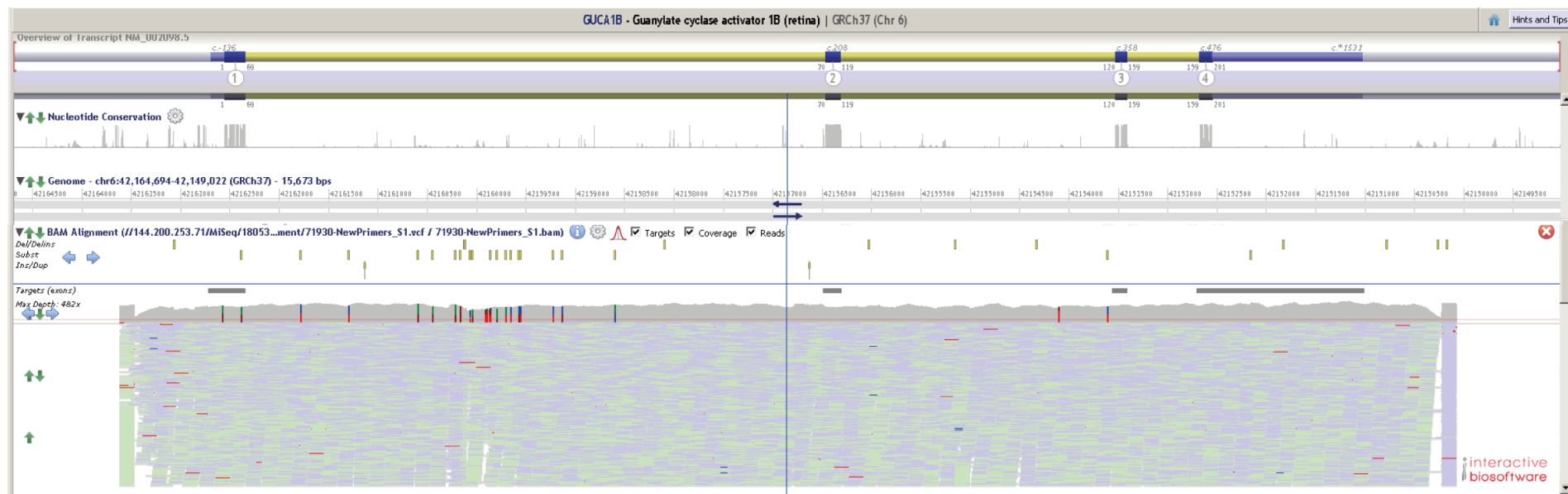
H)



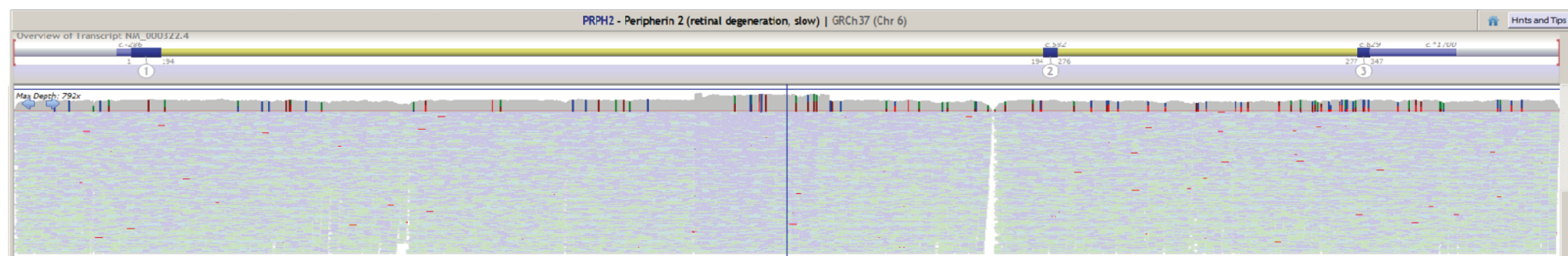
l)



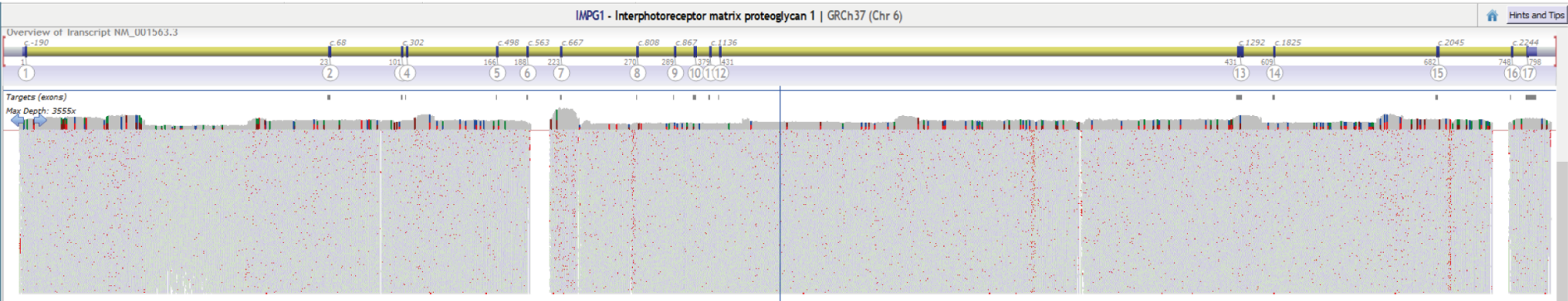
J)



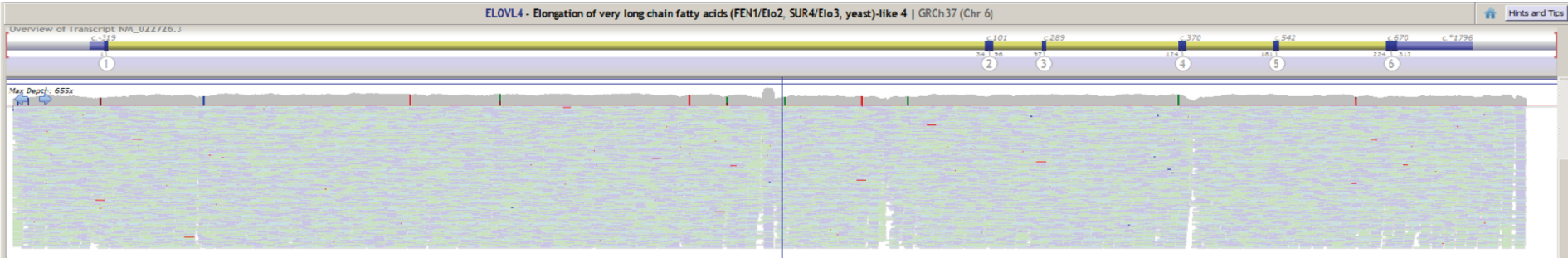
K)



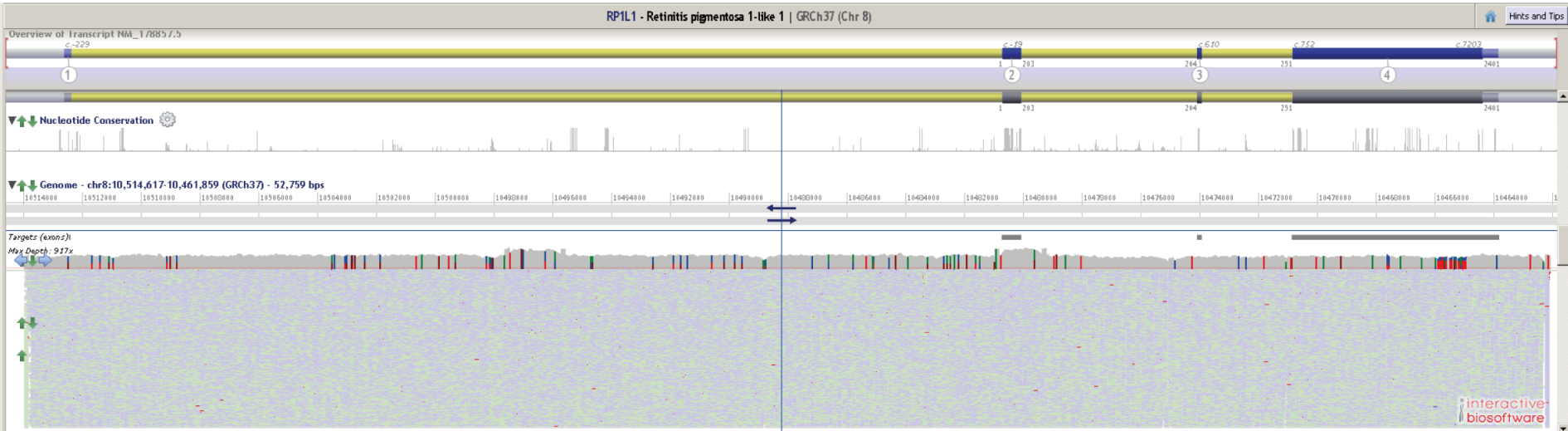
L)



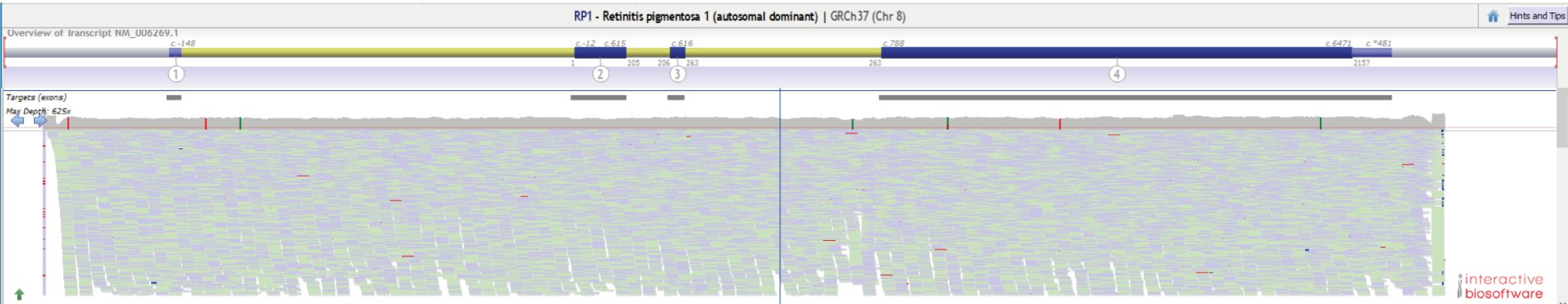
M)



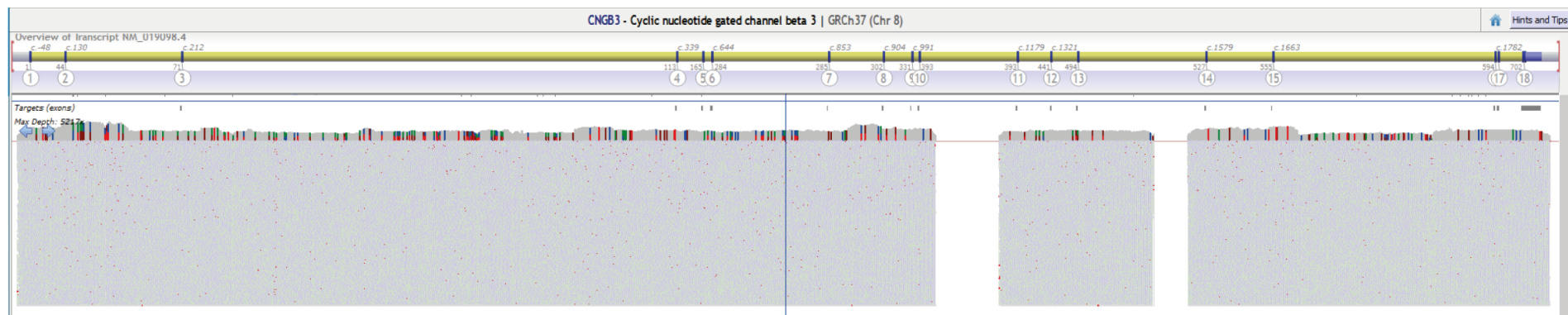
N)



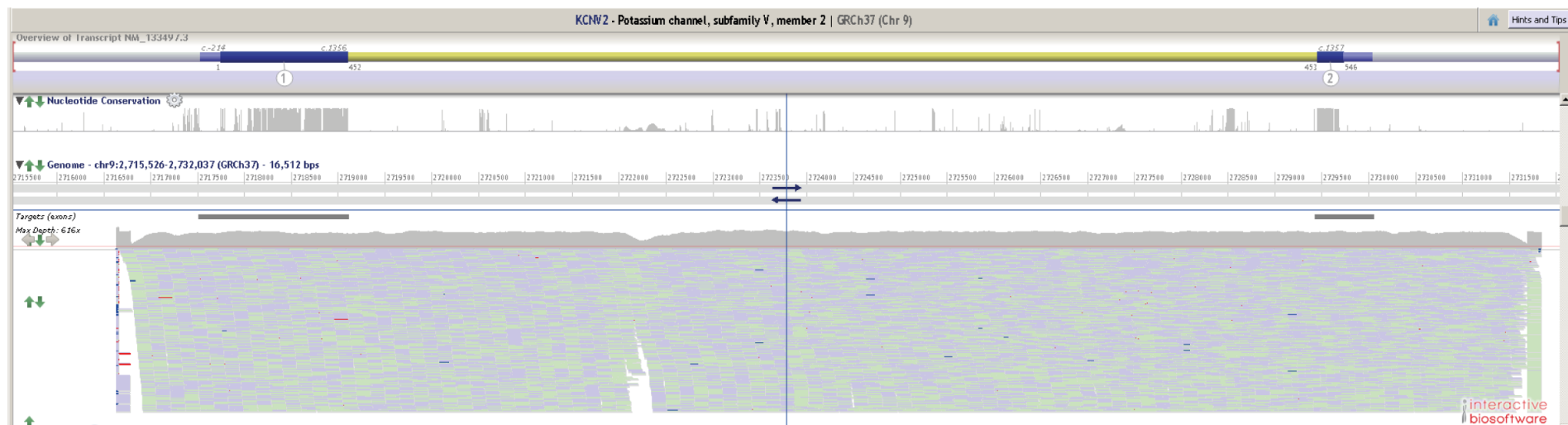
O)



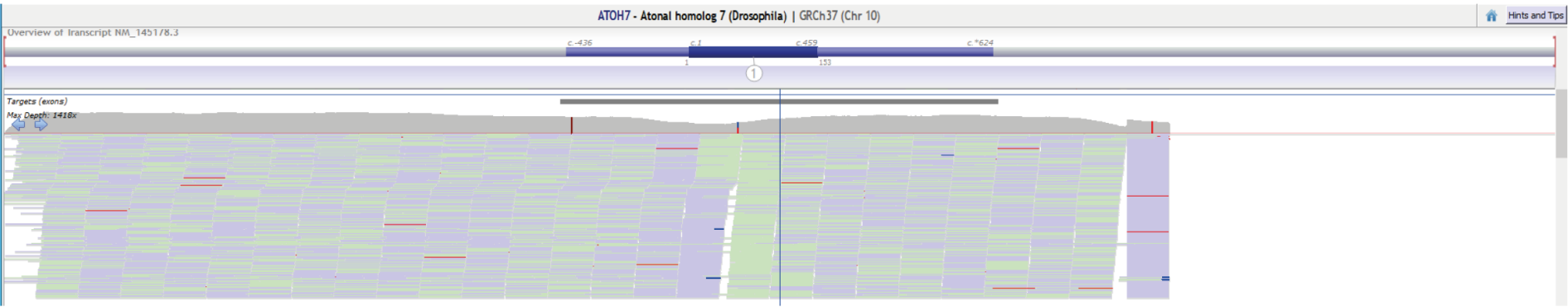
P)



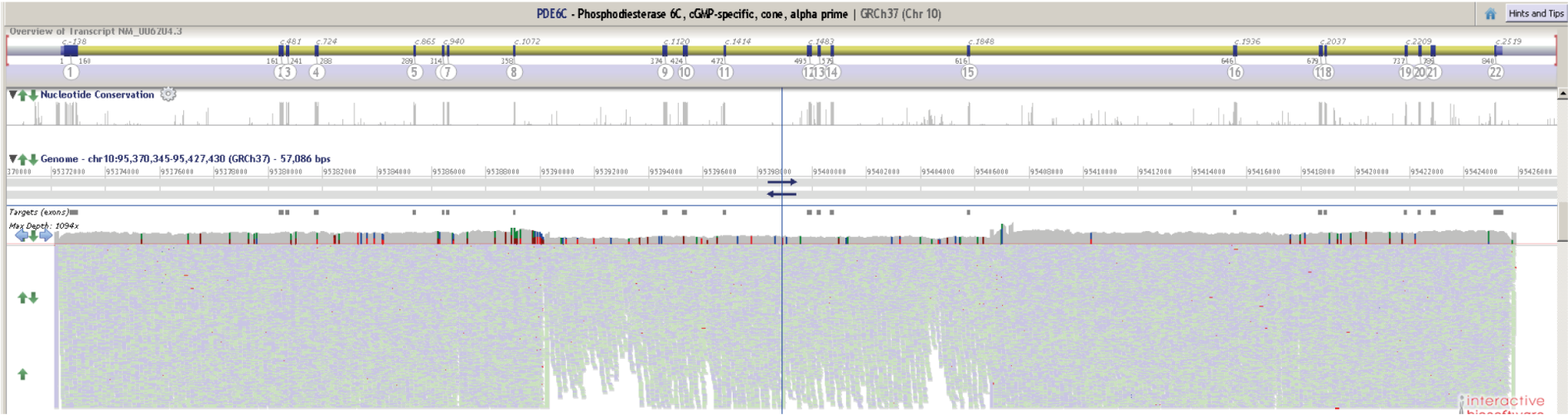
Q)



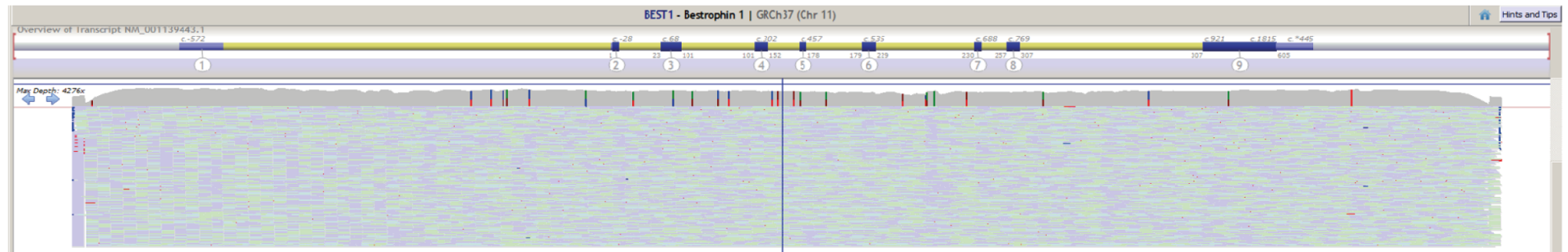
R)



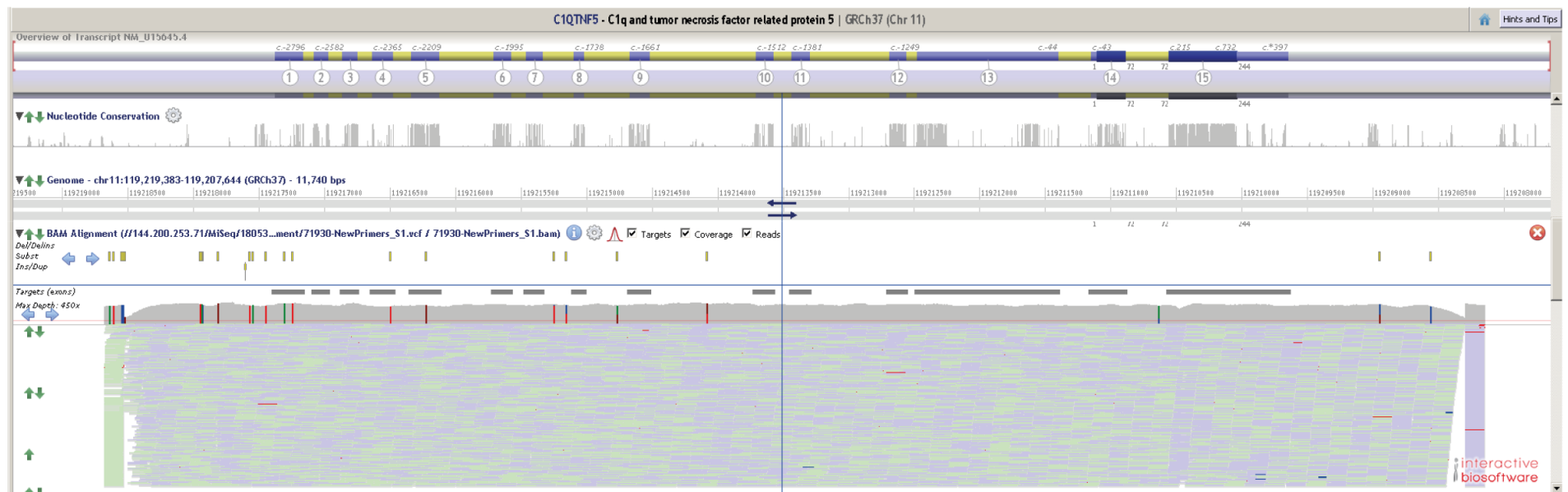
S)



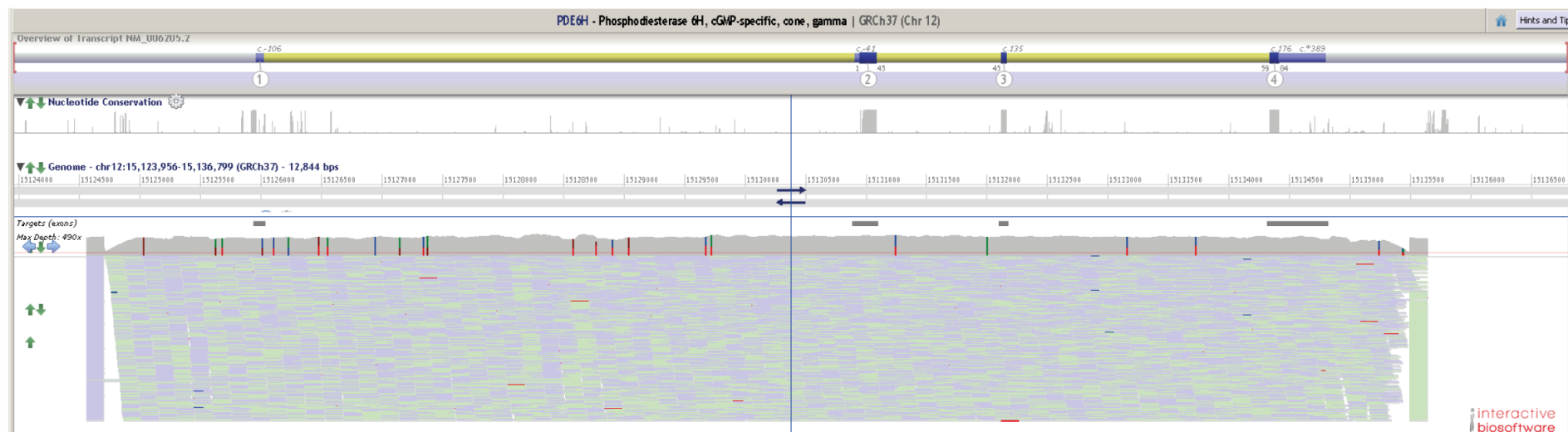
T)



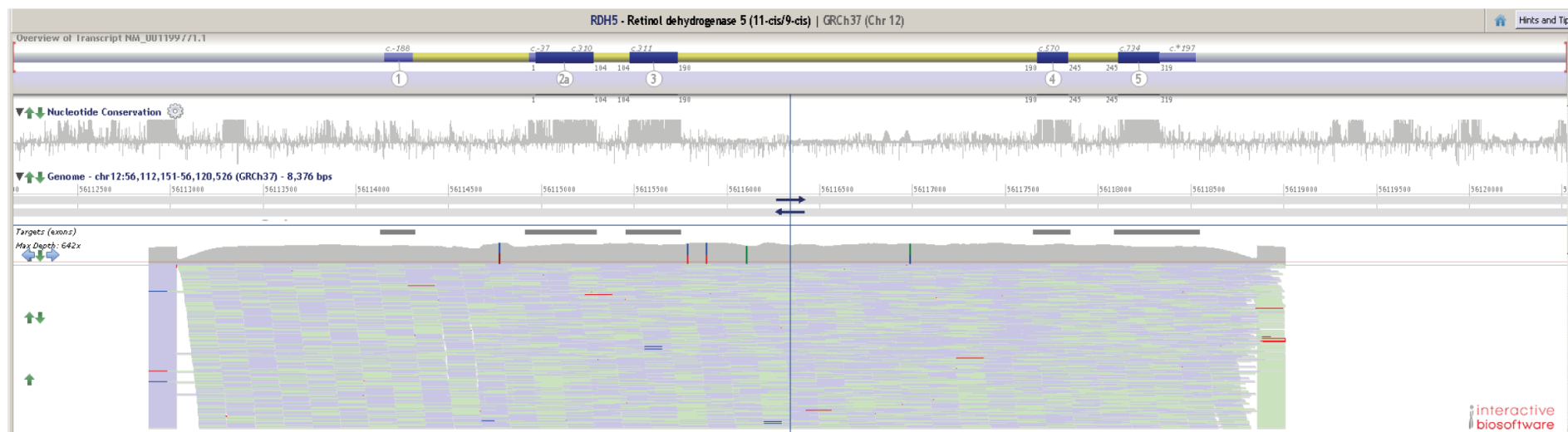
U)



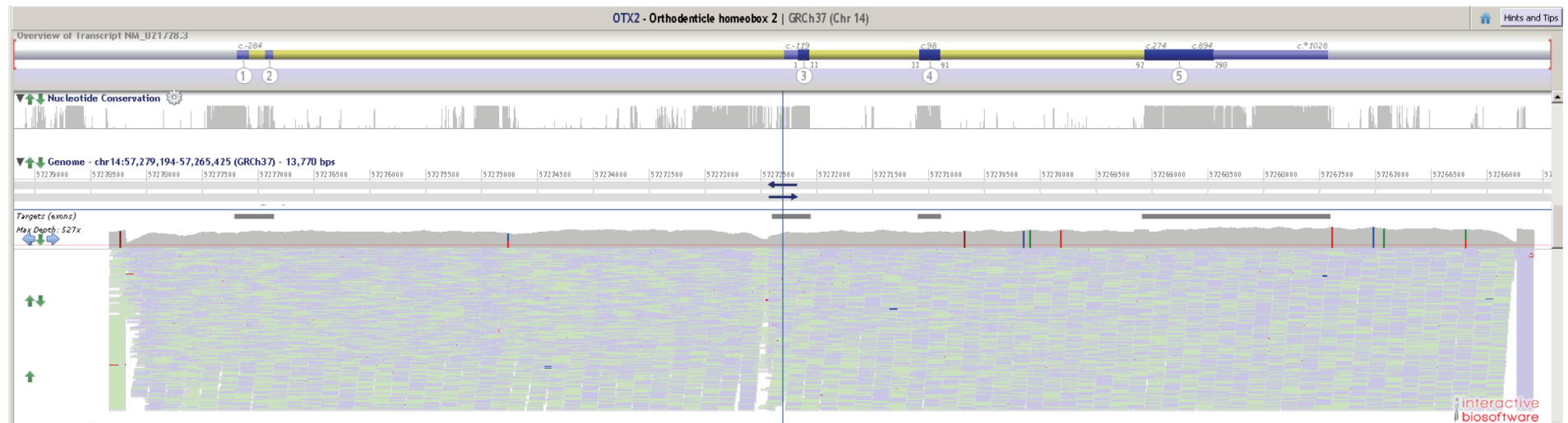
V)



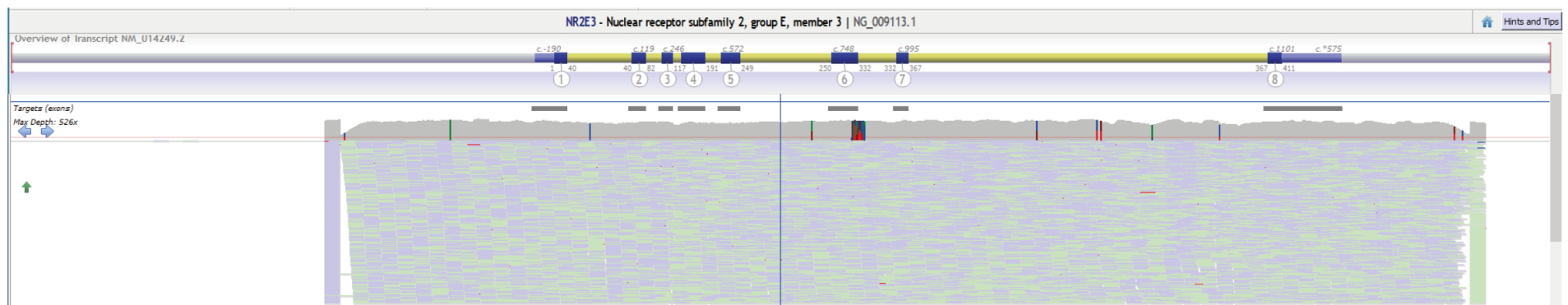
W)



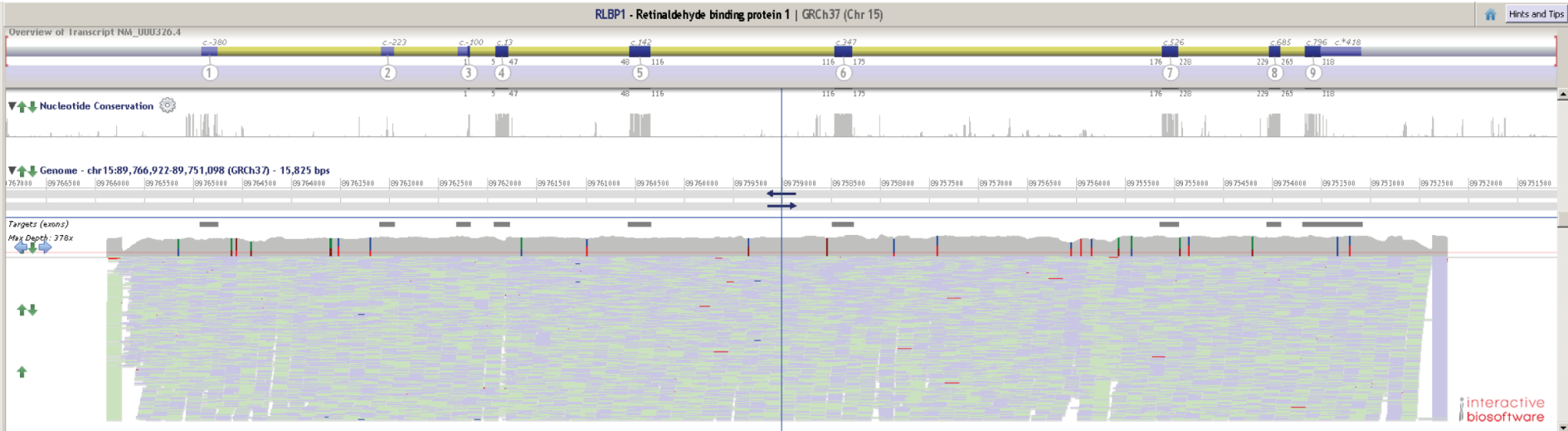
X)



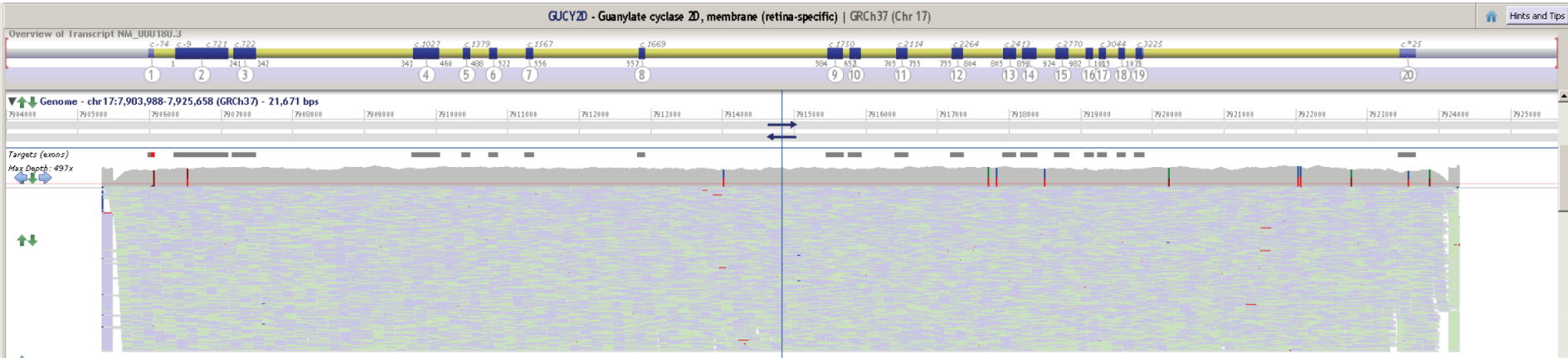
Y)



Z)



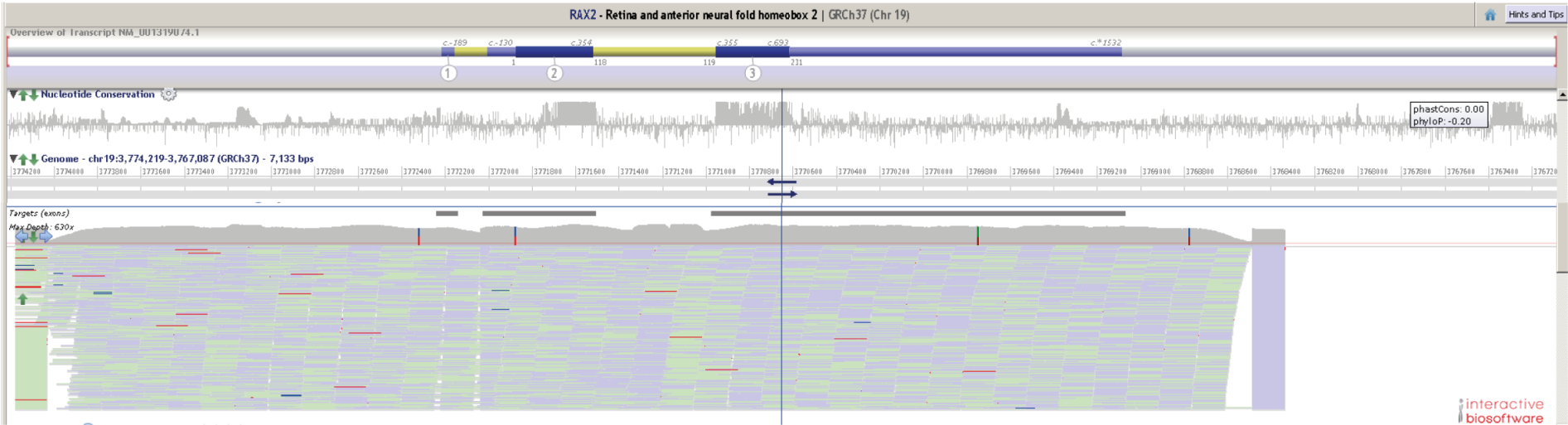
AA)



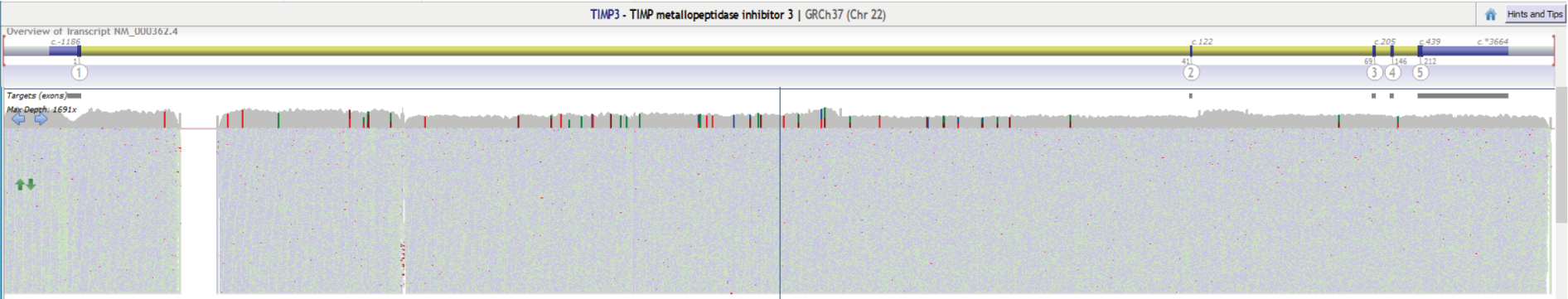
BB)



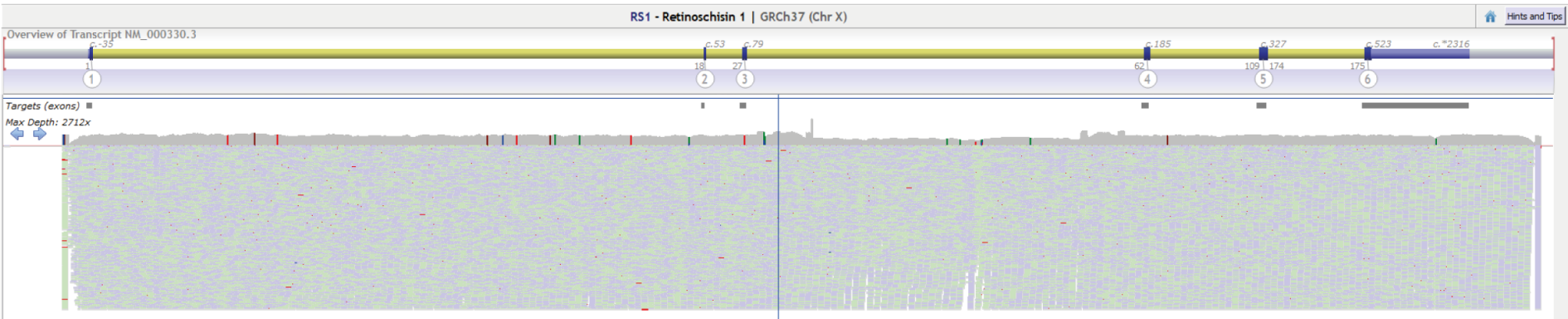
CC)



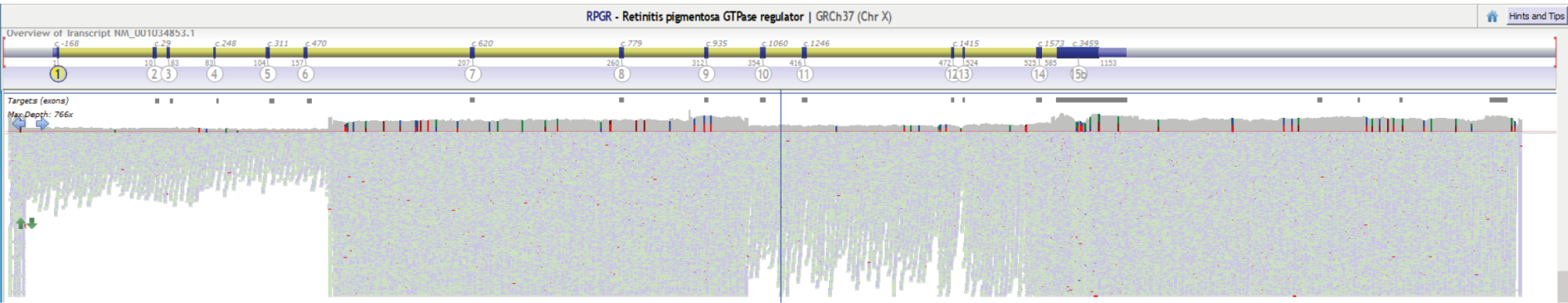
DD)



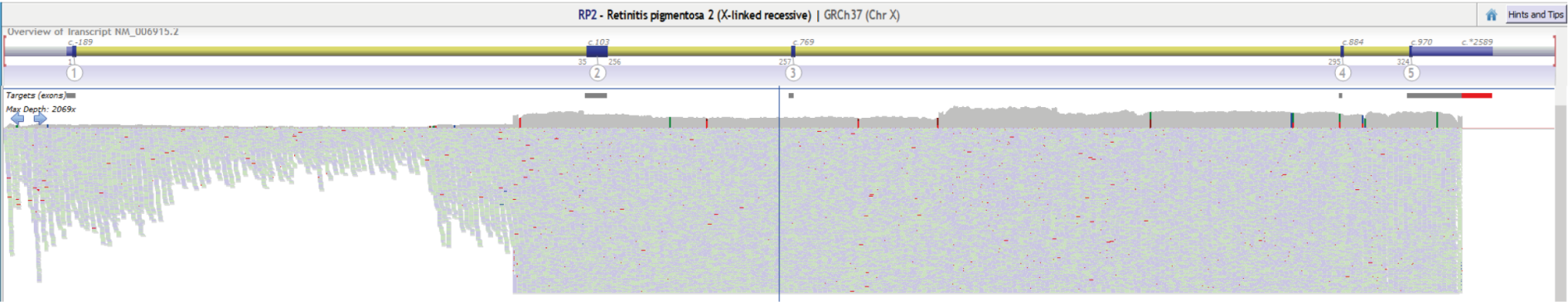
EE)



FF)



GG)



HH)

