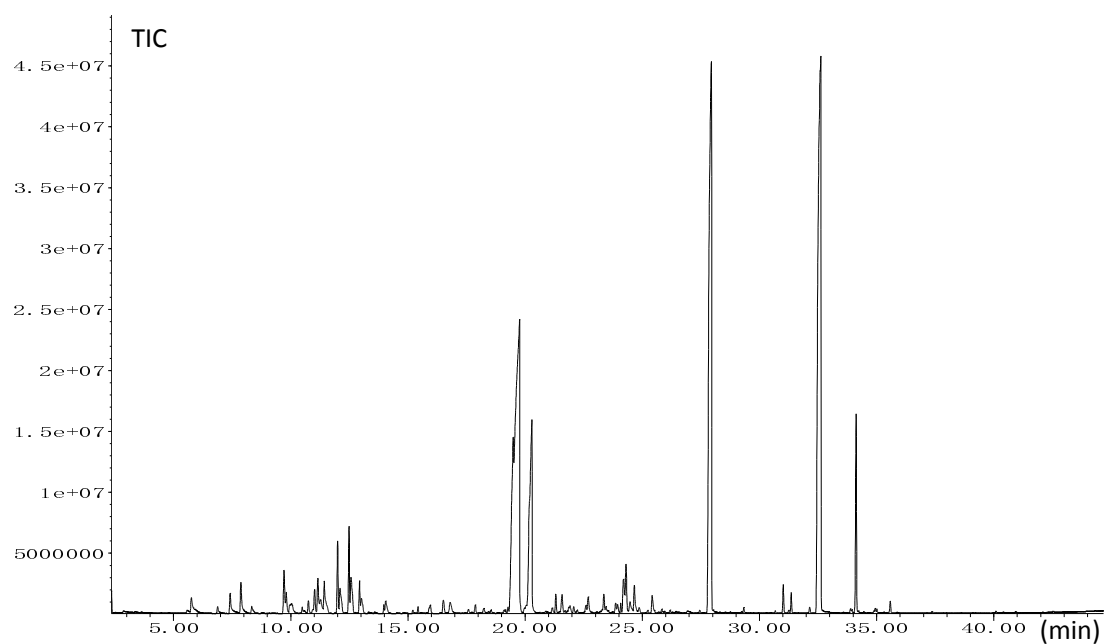


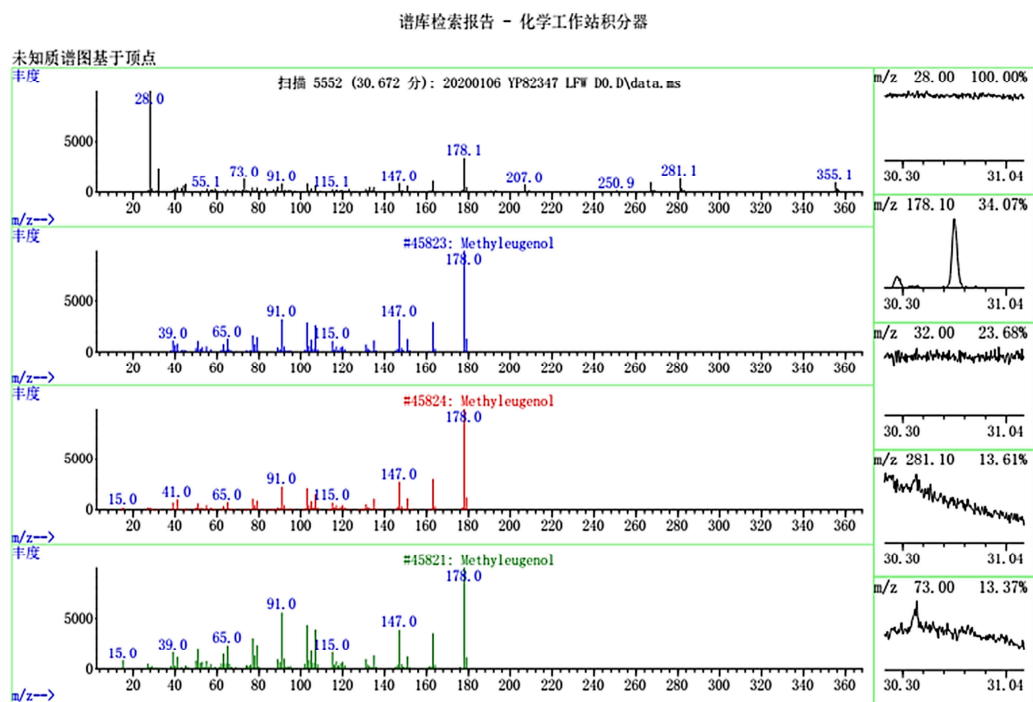
Table S19 Primers used for qRT-PCR analysis.

Primers		Sequence (5'-3')
c22420.graph_c0	F	ACTTCAGAAGGAGCTCATAAG
	R	CTTAGTGGGAGACATGGAGTG
c28909.graph_c0	F	ACACACTTGTCGATTACCTG
	R	AGCGCACGCAGAAGTAGGTT
c56553.graph_c0	F	ATGCACAACCGATCCTCTG
	R	GGATTTGAAATTCCGAGGATG
c59933.graph_c0	F	ACTCATGTCCTCAGGCAGAAG
	R	TCCTCAGCCCCGAAACTCCTG
c59927.graph_c0	F	ATTACTCGCCAGCAACGCCCT
	R	ACCTCACCGGGTGCGTTCA
c59949.graph_c0	F	ATGCACCACTATCCAAGGCTGA
	R	ATTGAGCCATGGCTTCCTTCTTG
c26113.graph_c0	F	ACATGTGTACTCGACCGCA
	R	TCATTAAAGCTTACTTGGAAGG
c25401.graph_c0	F	ATGGGTGGATCTGAGGAAGT
	R	AGTCCAATGGCCTCTGATCCCTT
c22977.graph_c0	F	ATTGGCCGGAGACGGGAC
	R	AAGCTTCTCTCCATCGAC
18SrRNA	F	AACGAGACCTCAGCCTGCT
	R	CCCAGAACATCTAAGGGCA

Figure S1 The mass data of methyleugenol, safrole and myristicin.



1) Methyleugenol (Rt 30.671 min)



样品:

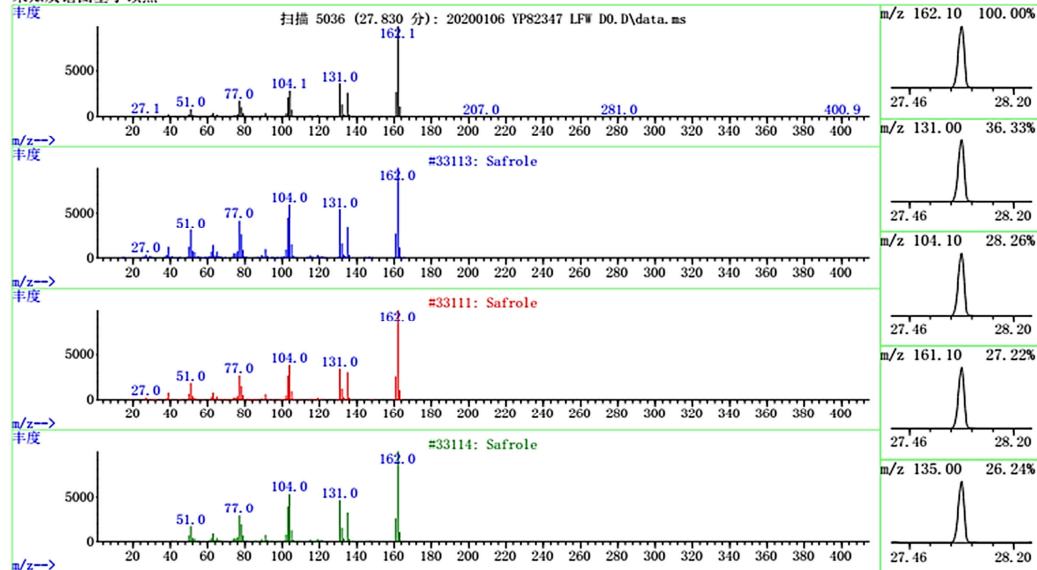
峰编号: 136 30.671 分钟处 面积: 1503368 面积 % 0.01

每个谱库中 3 个最匹配的记录。

	Ref\#	CAS\#	匹配度
C:\Database\NIST14.L			
1 Methyleugenol		45823 000093-15-2	95
2 Methyleugenol		45824 000093-15-2	95
3 Methyleugenol		45821 000093-15-2	86

2) Safrole (Rt 27.828 min)

谱库检索报告 - 化学工作站积分器



样品:

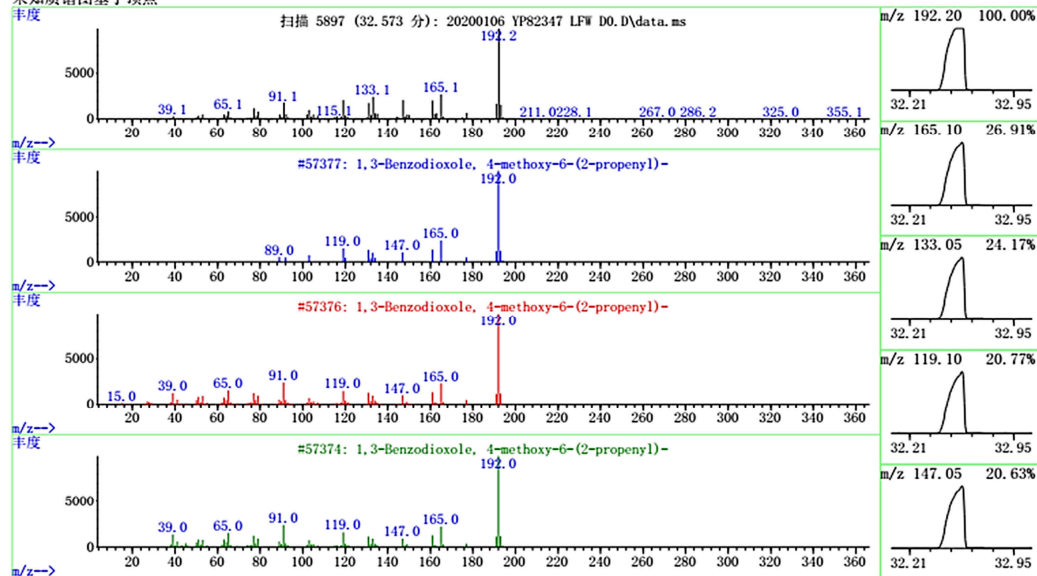
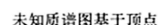
峰编号: 123 27.828 分钟处 面积: 459077264 面积 % 3.93

每个谱库中 3 个最匹配的记录。

C:\Database\NIST14.L			
1 Safrole	33113	000094-59-7	97
2 Safrole	33111	000094-59-7	97
3 Safrole	33114	000094-59-7	96

3) Myristicin (Rt 32.574 min)

谱库检索报告 - 化学工作站积分器



样品:

峰编号: 144 32.574 分钟处 面积: 2973819548 面积 % 25.46

每个谱库中 3 个最匹配的记录。

NAME	PRENOM	NUMERO	DATE	PROX
C:\Database\NIST14.L				
1	1,3-Benzodioxole, 4-methoxy-6-(2...	57377	000607-91-0	96
2	1,3-Benzodioxole, 4-methoxy-6-(2...	57376	000607-91-0	96
3	1,3-Benzodioxole, 4-methoxy-6-(2...	57374	000607-91-0	95

Figure S2 Cluster analysis of DEGs.

