

Supporting Information

Chemoenzymatic Synthesis and Antibody Binding of HIV-1 V1/V2 Glycopeptide-Bacteriophage Q β Conjugates as a Vaccine Candidate

Guanghui Zong ^{1,†}, Christian Toonstra ^{1,†}, Qiang Yang ¹, Roushu Zhang ¹ and Lai-Xi Wang ^{1,*}

¹ Department of Chemistry and Biochemistry, University of Maryland, College Park, Maryland 20742, United States

[†] Equal contributions as co-first authors

* Correspondence: wang518@umd.edu; Tel.: +1-301-405-7527 (L.X.W.)

Table of Contents

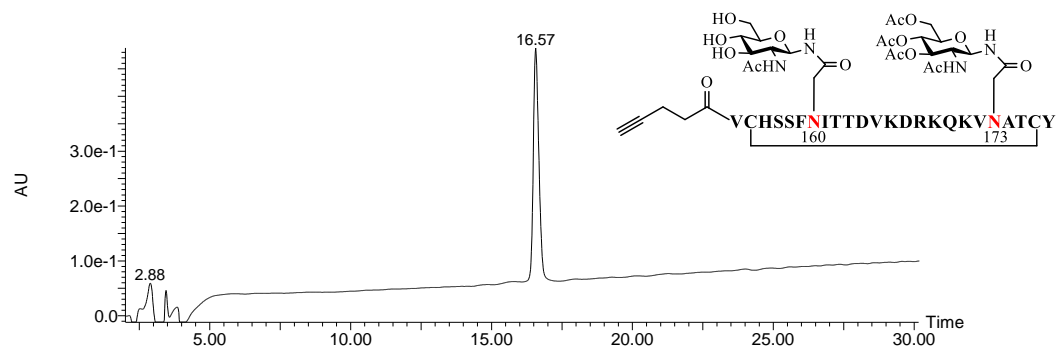
1. RP-HPLC and LC/MS Profiles	S2-12
-------------------------------	-------

RP-HPLC and ESI-MS Profiles of (Glyco)peptides

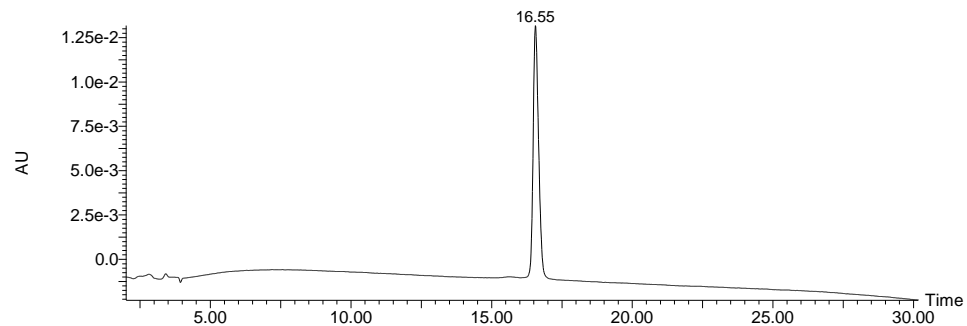
HPLC conditions:

Analytical reverse-phase HPLC was performed on a Waters Alliance[®] e2695 HPLC system equipped with a dual absorbance 2489 UV/Vis detector. Separations were performed using a C18 column (YMC-Triart C18, 4.6 × 250 mm, 5 μm) at a flow rate of 1 mL/min using a linear gradient of 5-40% MeCN containing 0.1% FA over 30 min. ESI-MS spectra were obtained using a Waters SQ Detector 2 single quadrupole mass spectrometer.

Figure S1. HPLC profile of cyclic GlcNAc-peptide **4**



A. (UV Abs. 214 nm)



B. (UV Abs. 280 nm)

Figure S2. ESI-MS profile of cyclic GlcNAc-peptide **4**

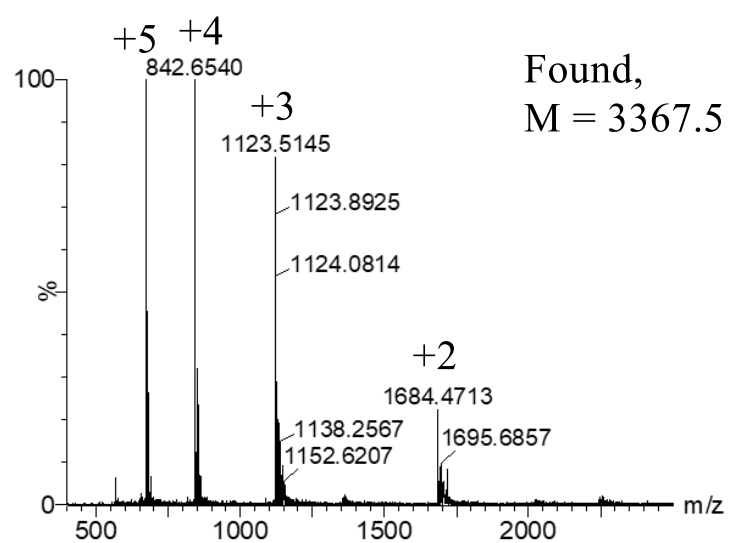
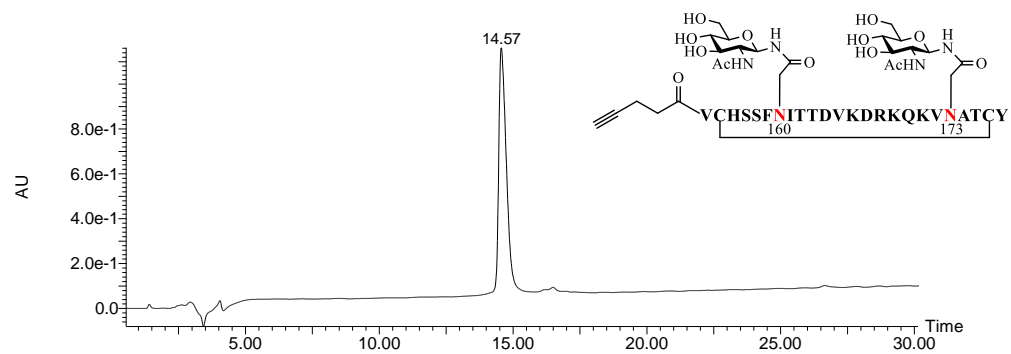
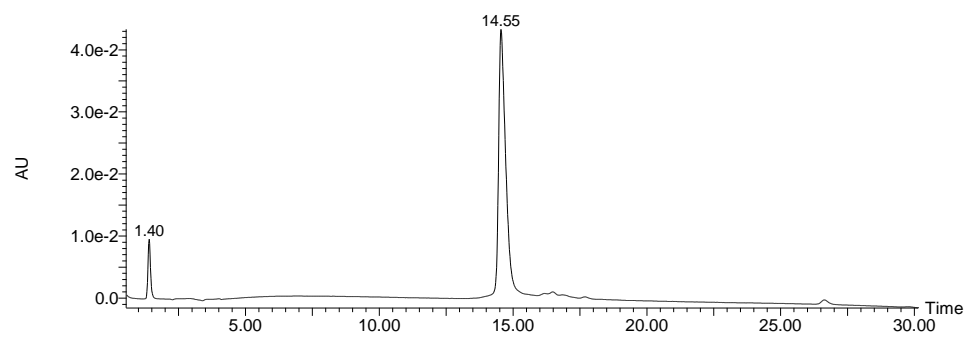


Figure S3. HPLC profile of cyclic GlcNAc-peptide **5**



A. (UV Abs. 214 nm)



B. (UV Abs. 280 nm)

Figure S4. ESI-MS profile of cyclic GlcNAc-peptide **5**

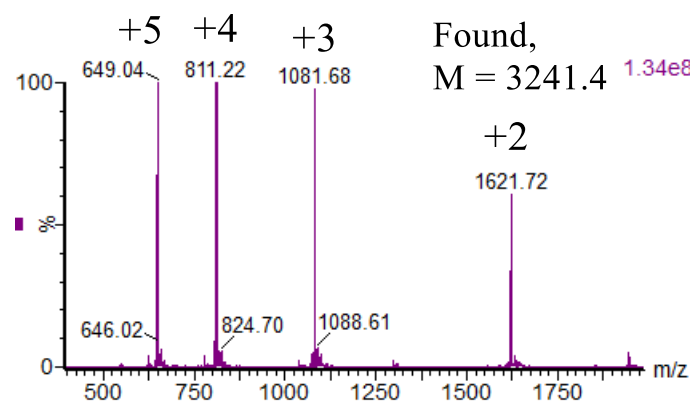
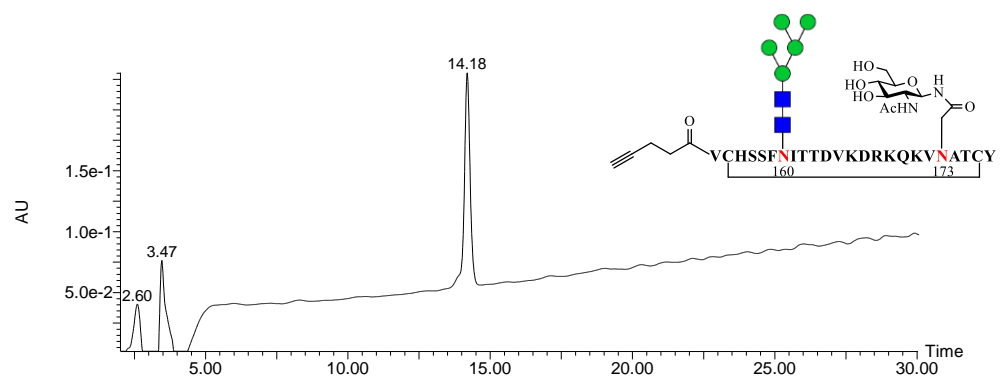
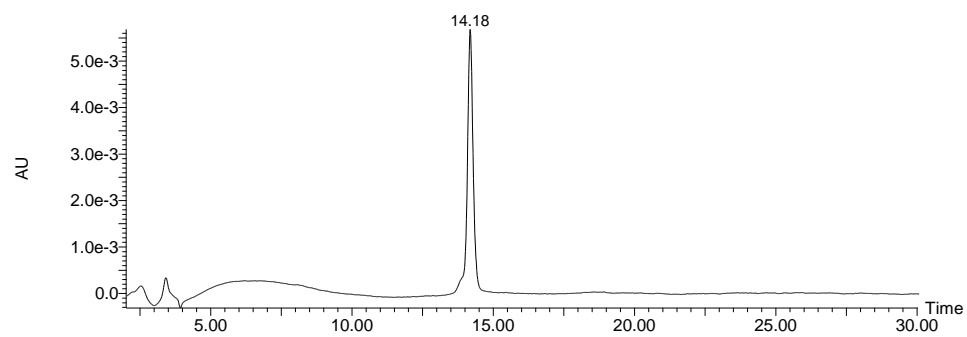


Figure S5. HPLC profile of cyclic GlcNAc-peptide **8**



A. (UV Abs. 214 nm)



B. (UV Abs. 280 nm)

Figure S6. ESI-MS profile of cyclic glycopeptide **8**

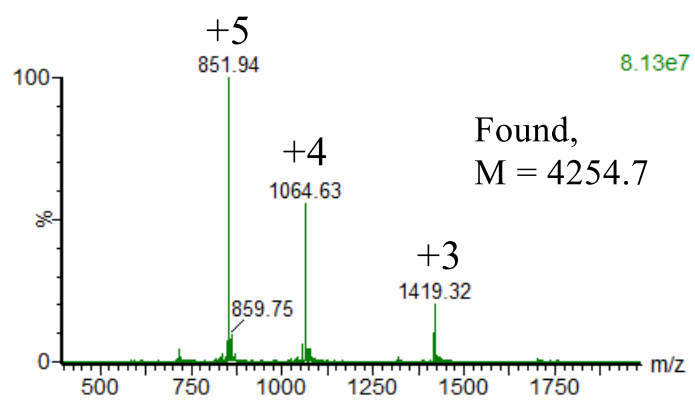
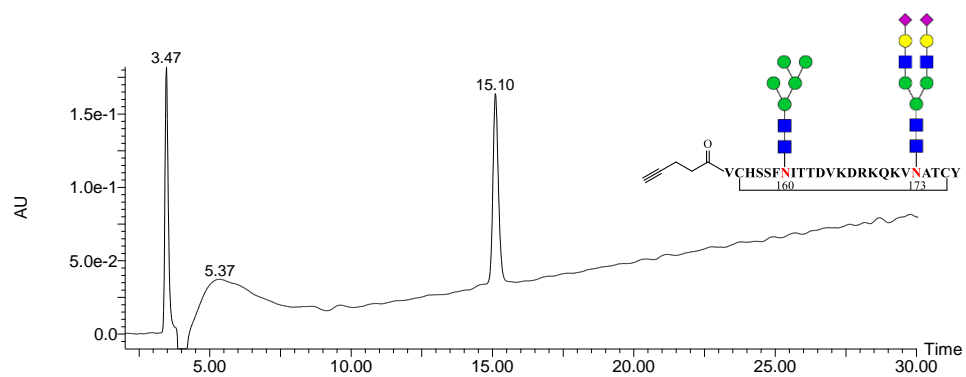
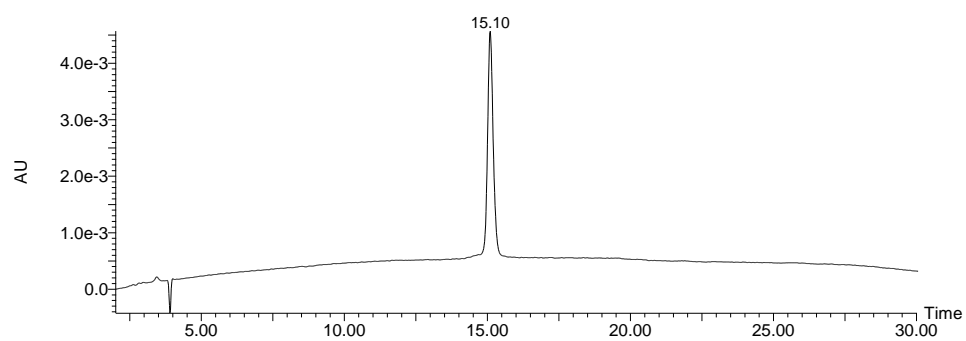


Figure S7. HPLC profile of cyclic glycopeptide **10**



A. (UV Abs. 214 nm)



B. (UV Abs. 280 nm)

Figure S8. ESI-MS profile of cyclic glycopeptide **10**

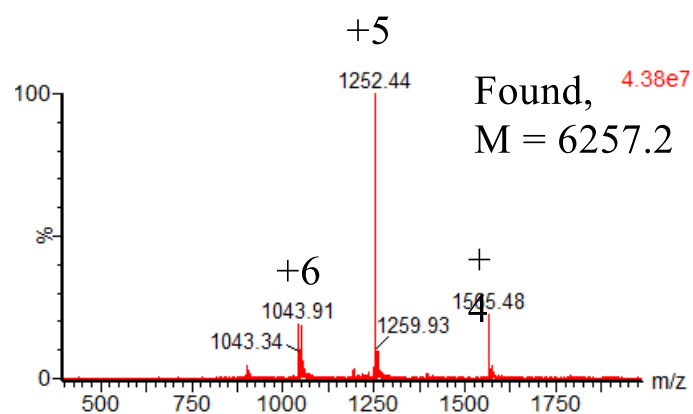
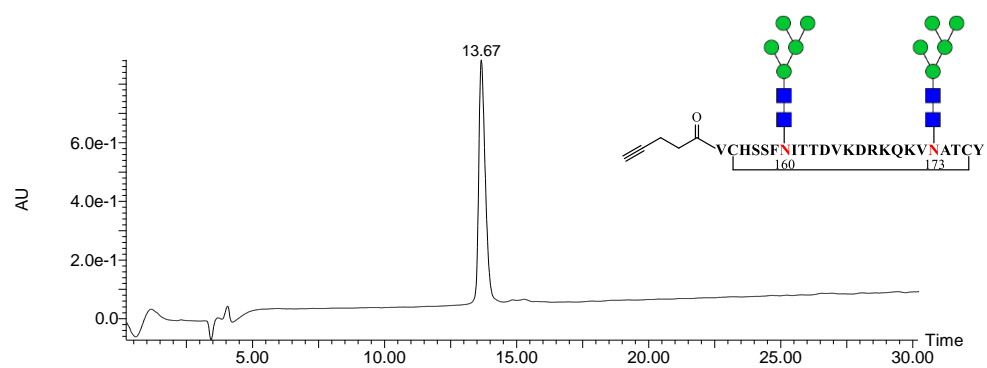
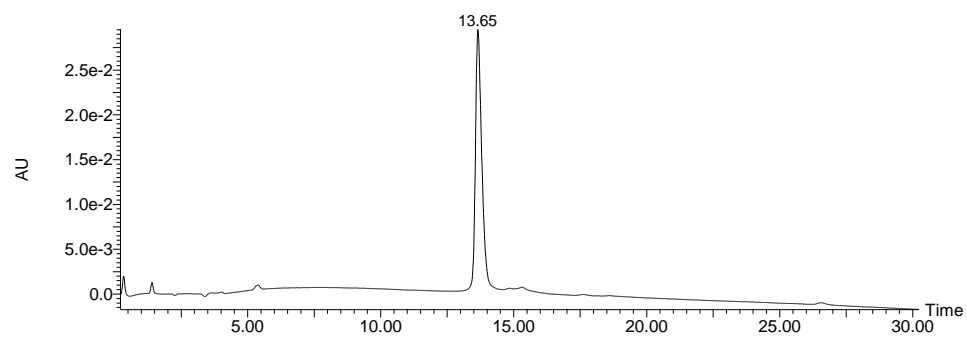


Figure S9. HPLC profile of cyclic glycopeptide **11**



A. (UV Abs. 214 nm)



B. (UV Abs. 280 nm)

Figure S10. ESI-MS profile of cyclic glycopeptide **11**

