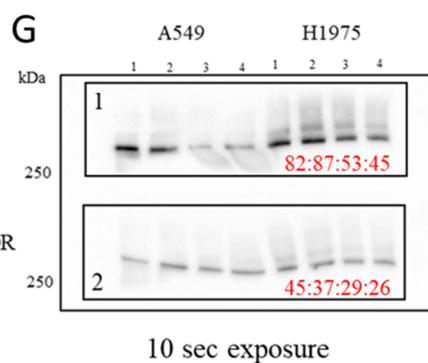
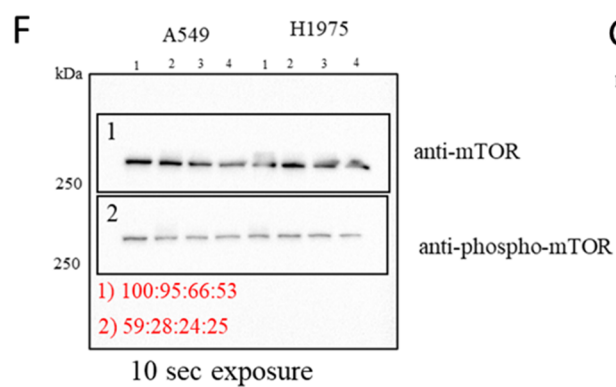
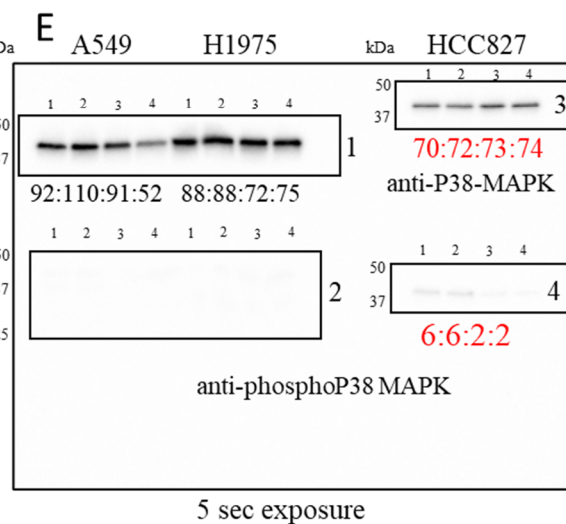
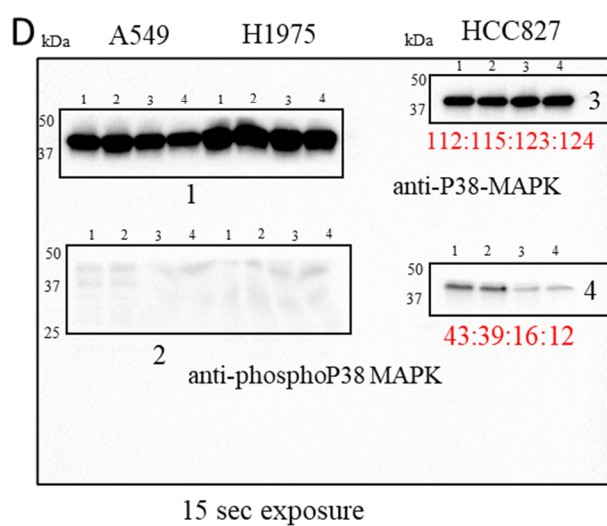
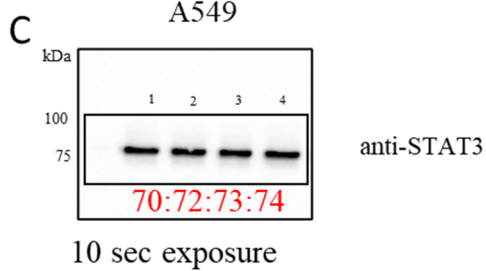
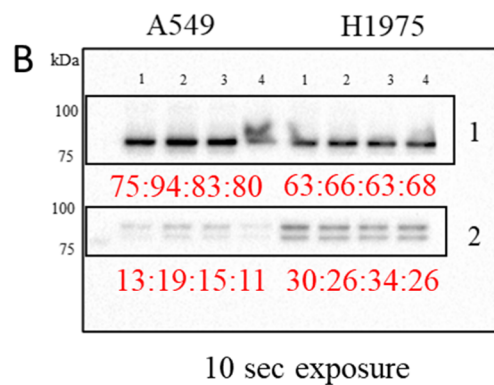
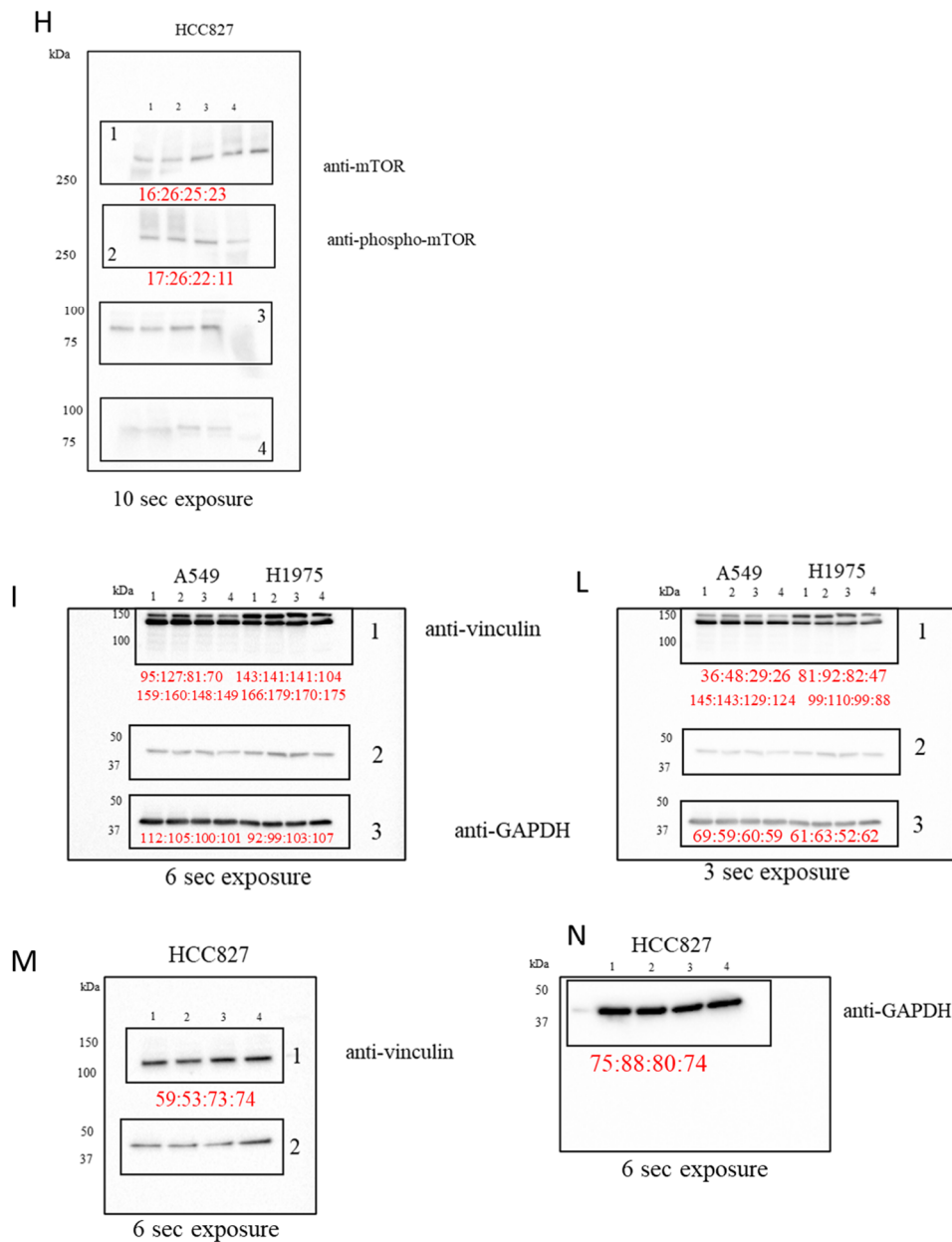


1) 16:16:21:38
2) 15:17:14:15
10 sec exposure





Supplementary Figure S1. Multiple exposures of western blot analysis. The number of samples did not allow for a single run. The sample derive from the same experiment, gels and blots were processed in parallel. After blotting, membranes were cropped, with the help of the marker, at the height of the protein of interest before being incubated with the antibody. In this way, several antibodies with different incubation modes can be visualized in the same run. During development at ChemiDoc, the cropped membranes were developed together considering the sensitivity of the antibody and the same exposure times. In the figure, letters A–N show the ChemiDoc images, while the numbers the different membranes. The following images were used: C (A549), A1 (HCC827) and B1 (H1975) were used for anti-STAT3 antibody and AE2 and B2 for phosho-STAT3. For p38-MAPK D3 and E1 were used, while D4 and E2 were used for phospho-p38-MAPK membranes. Figure F (A549) and G–H (H1975 and HCC827) were used for anti-mTOR and anti-phospho-mTOR membranes. Figure L1 and M1 were used for anti-vinculin antibody, and I3 and N for GAPDH antibody. Sample legend: 1-untreated; 2- EGCG, 30 μ M; 3- EGCG, 70 μ M; 4- EGCG, 90 μ M.