

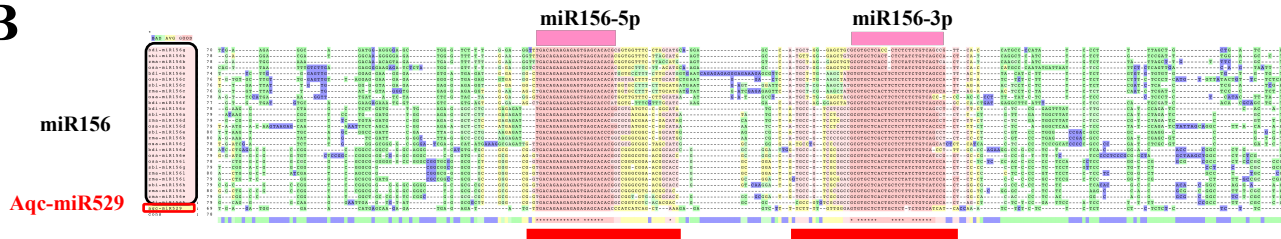
A

**Zma-miR156j** 5' --GAUGAC**AGAAGAGAGAGAGCACACCC**AGC-----3'

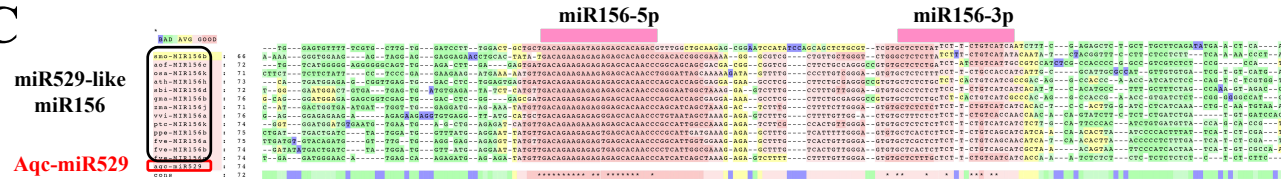
**Aqc-miR529** 5' --GUUGAC**AGAAGAGAGAGAGCACAAACCC**AUC-----3'

**Zma-miR529** 5' -----G**AGAAGAGAGAGAGUACAGCC**CUUGU-----3'

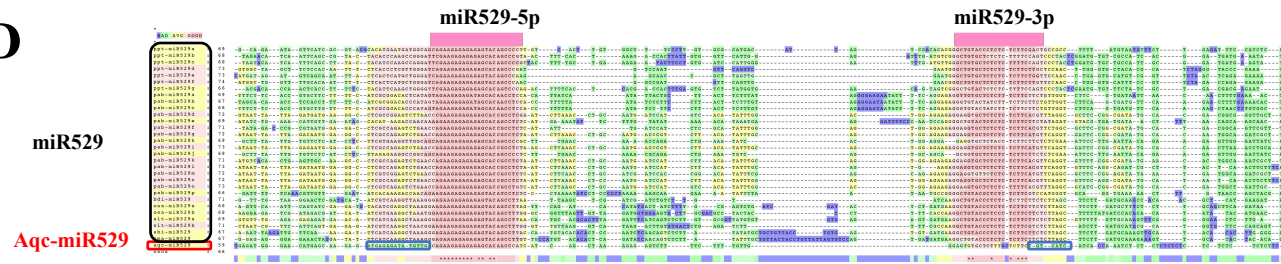
B



C



D



E

