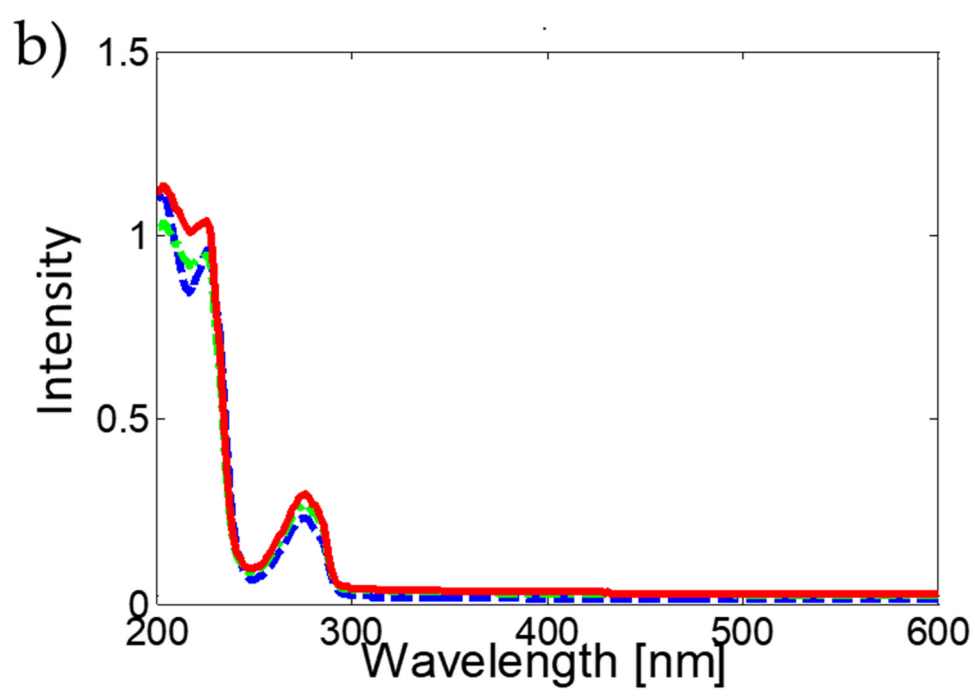
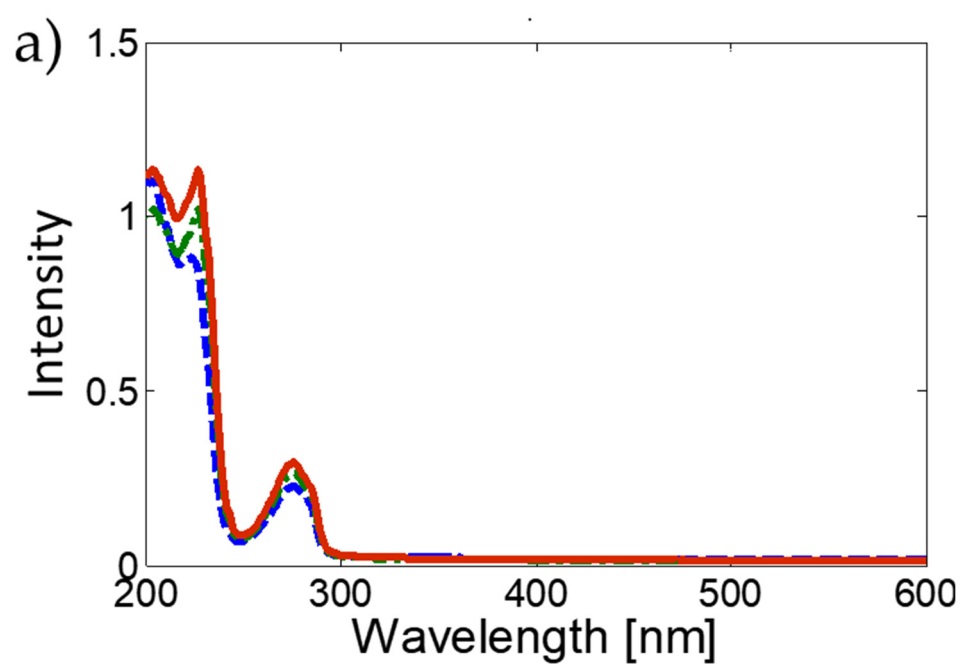




Supplementary materials



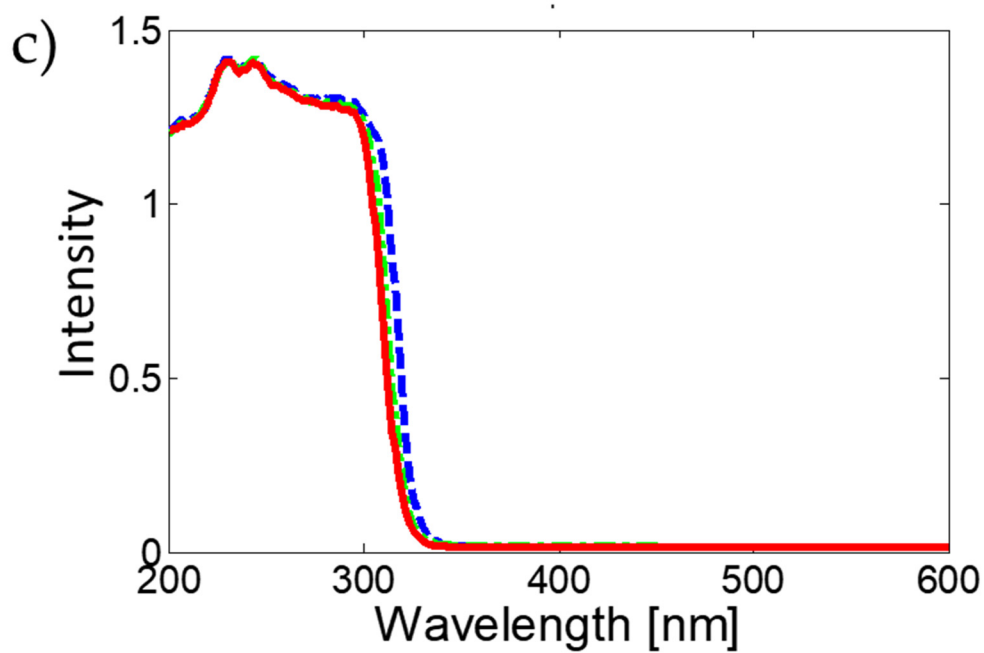
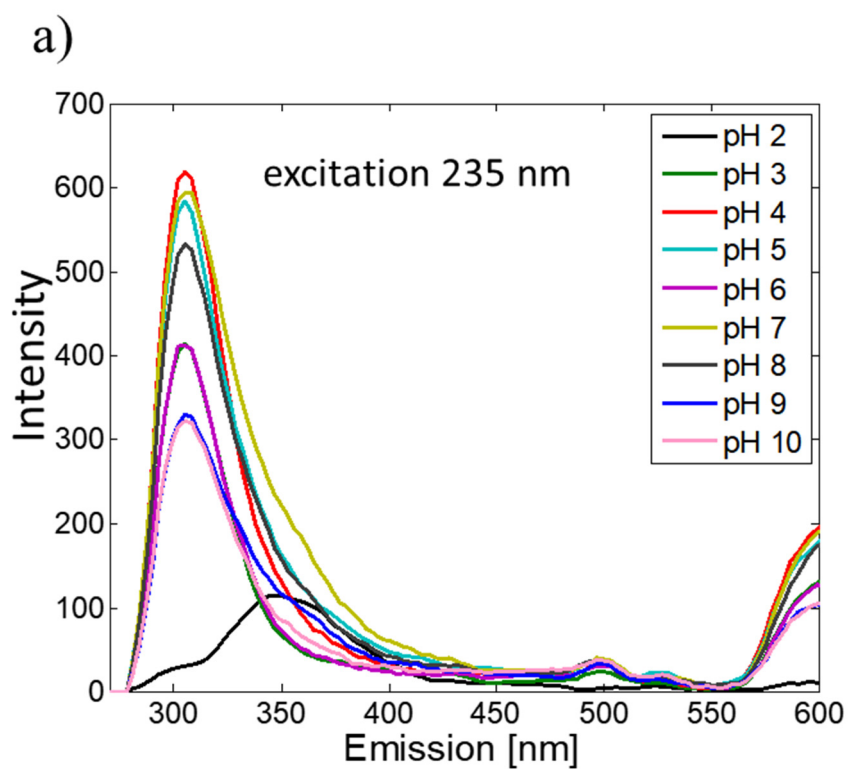


Figure S1. Absorption spectra of selected bisphenols and their equimolar complexes with β -CD and m- β -CD in phosphate buffer (pH=7.00) for (a) BPA, (b) BPF, and (c) BPS.



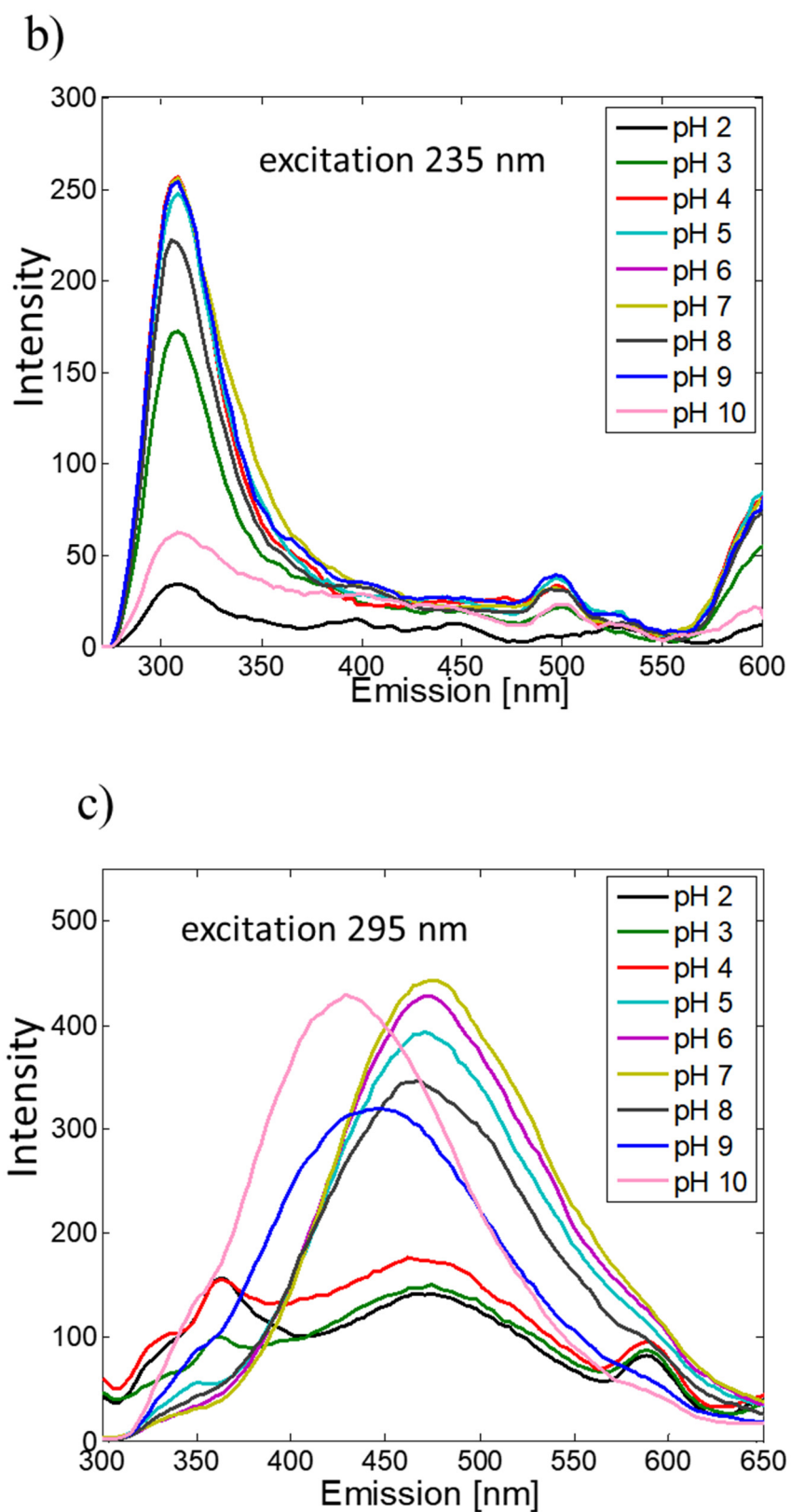
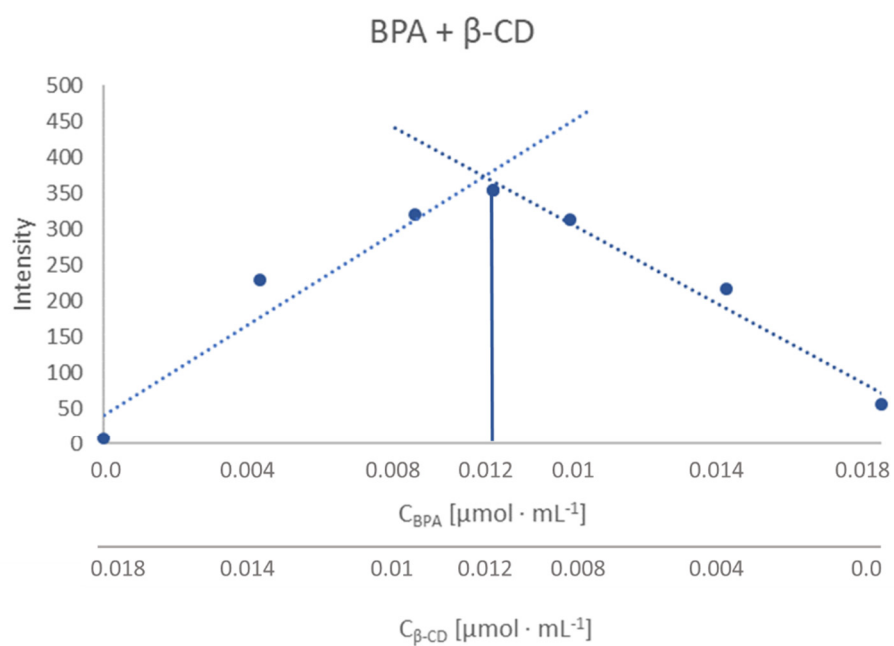
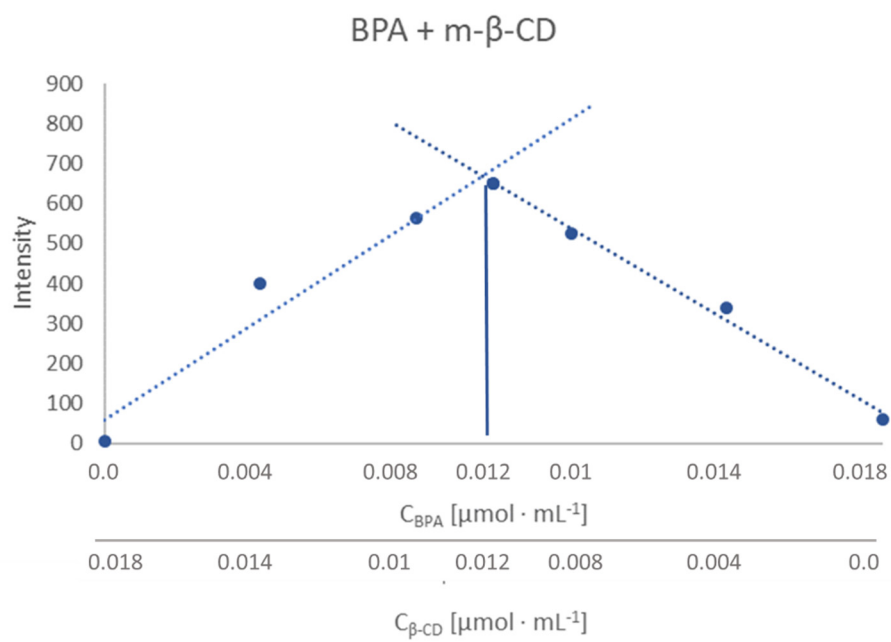


Figure S2. Emission spectra of selected bisphenols and their equimolar complexes with m - β -CD under pH 2–10 for (a) BPA, (b) BPF, and (c) BPS.

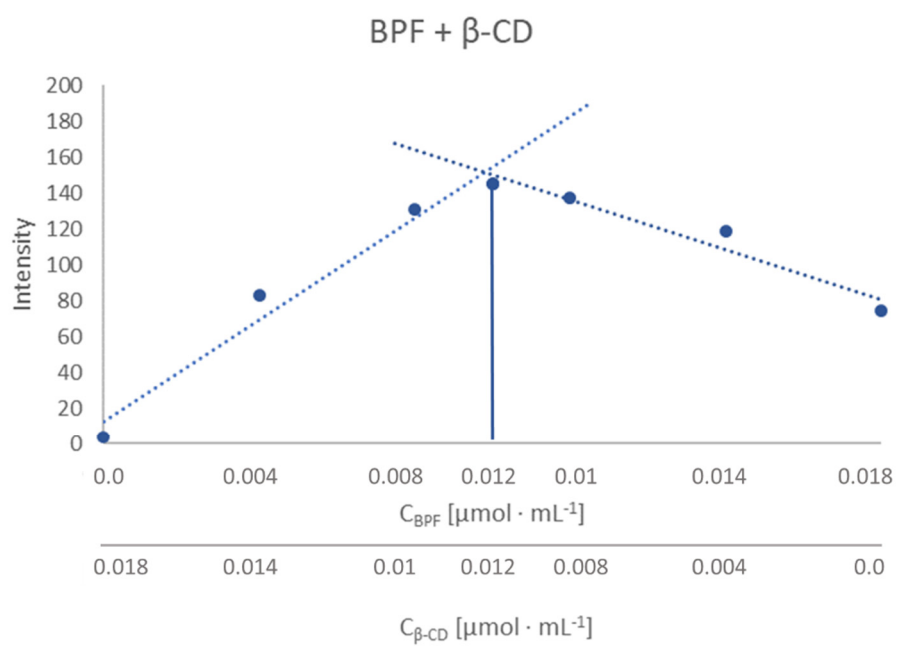
a)



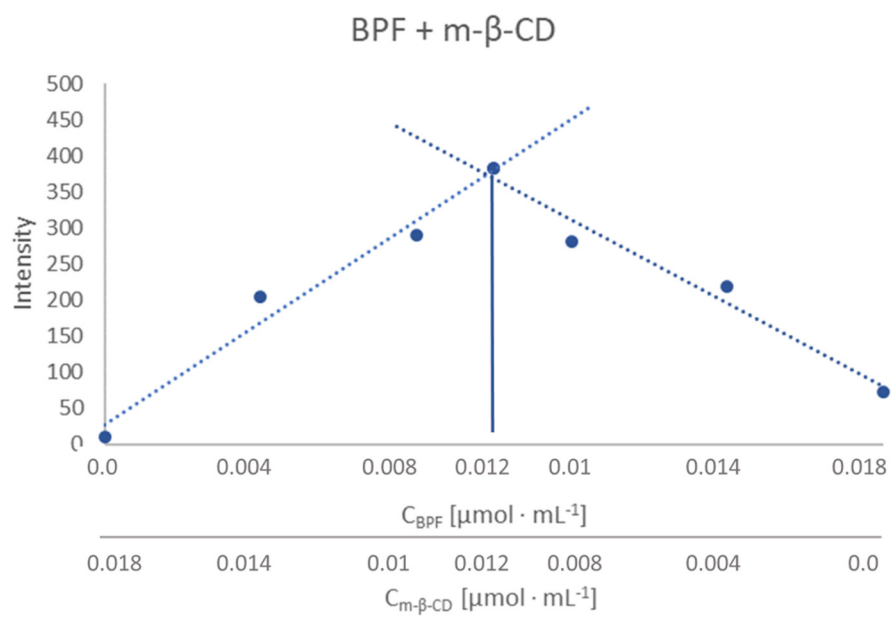
b)



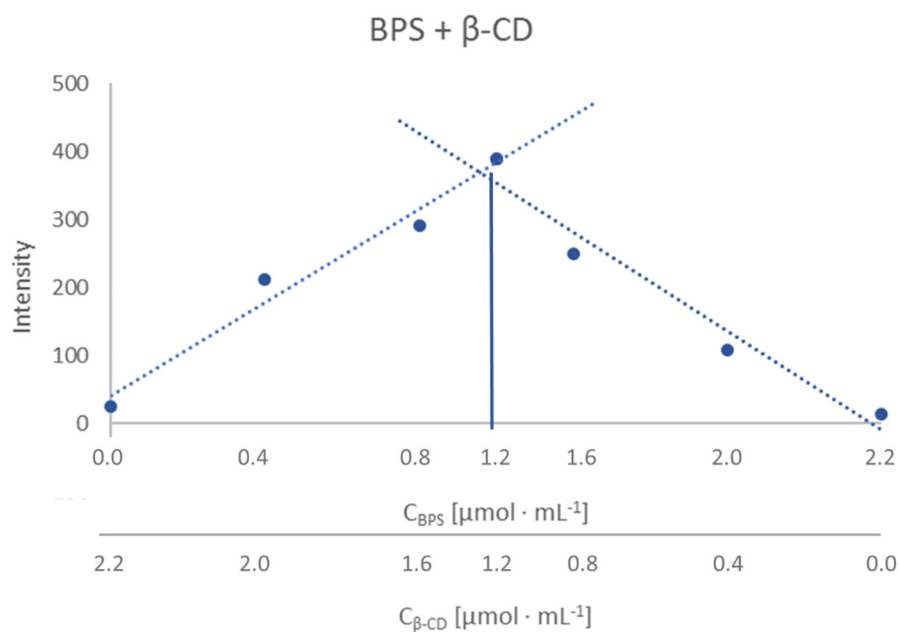
c)



d)



e)



f)

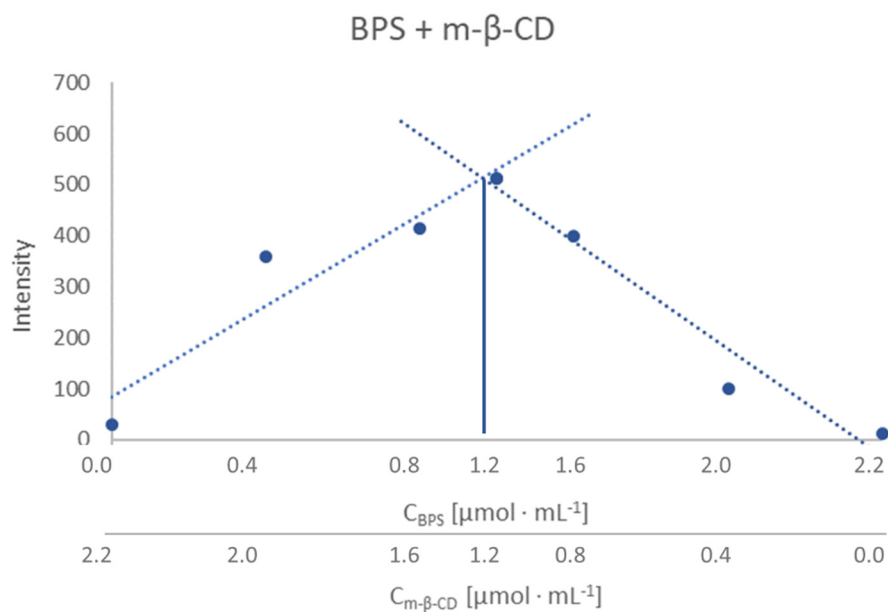


Figure S3. Job's plots of equimolar solutions of BPs and CDs compounds for: (a) BPA + β -CD (Ex-citation = 235 nm, Emission = 300 nm), (b) BPA + m- β -CD (Excitation = 235 nm, Emission = 300 nm), (c) BPF + β -CD (Excitation = 235 nm, Emission = 304 nm), (d) BPF + m- β -CD (Excitation = 235 nm, Emission = 304 nm), (e) BPS + β -CD (Excitation = 295 nm, Emission = 471 nm), (f) BPS + m- β -CD (Excitation = 295 nm, Emission = 471 nm).

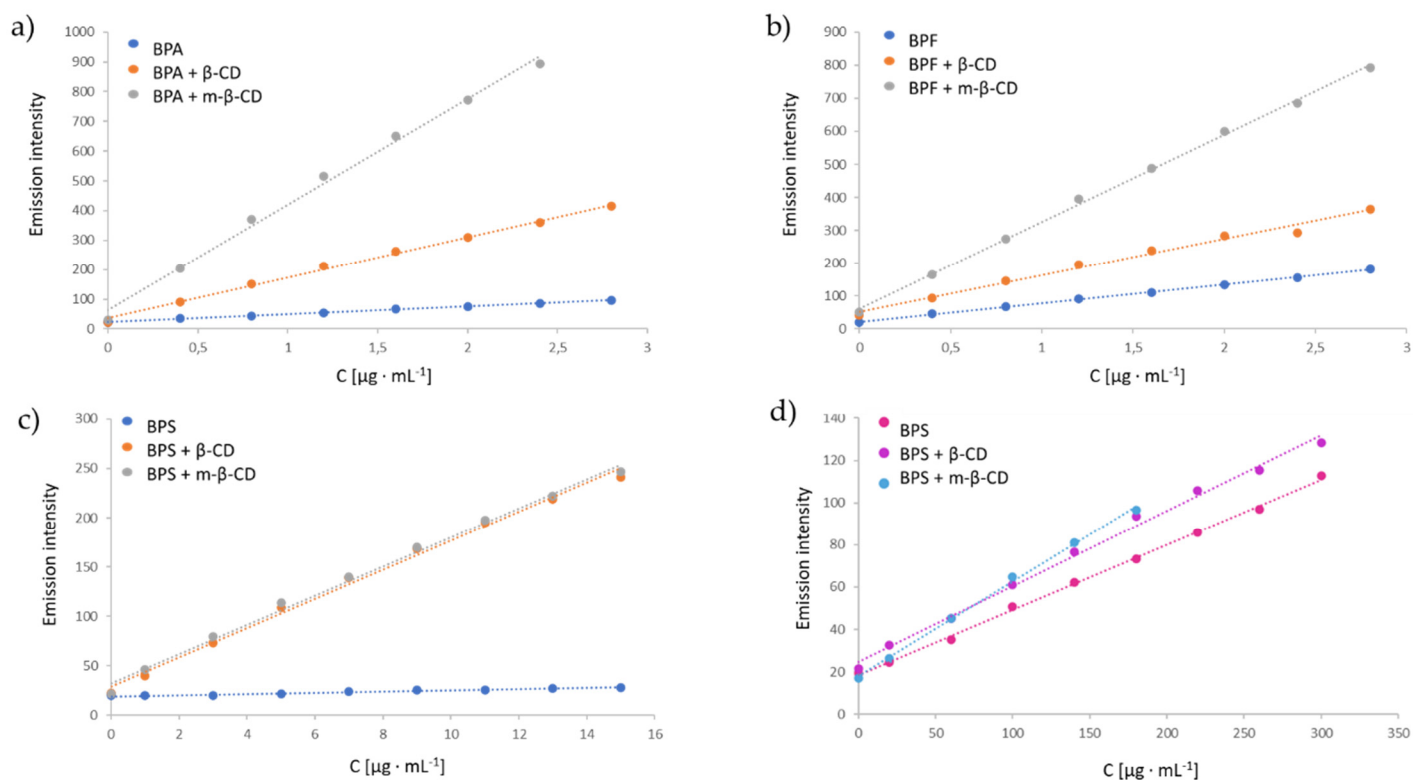


Figure S4. Calibration curves for: (a) BPA systems, excitation 235 nm, emission 300 nm; (b) BPF systems, excitation 235 nm, emission 304 nm, (c) BPS systems, excitation 355 nm, emission 400 nm; (d) BPS systems excitation 295 nm emission 471 nm.