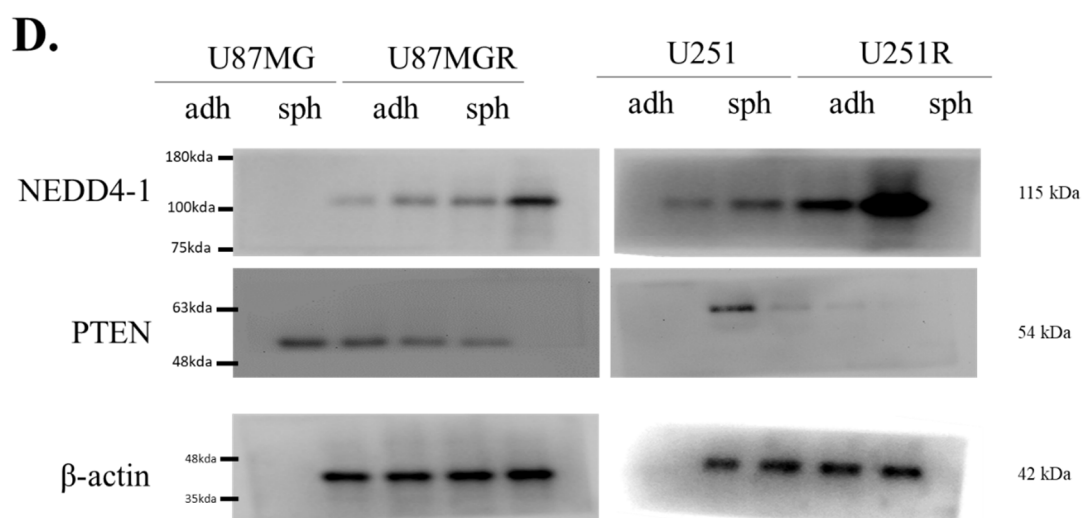
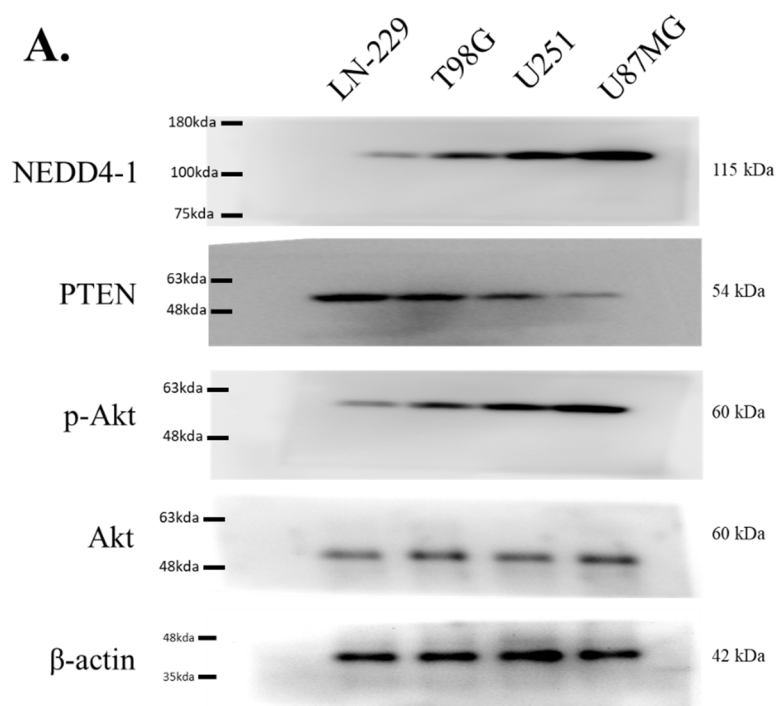


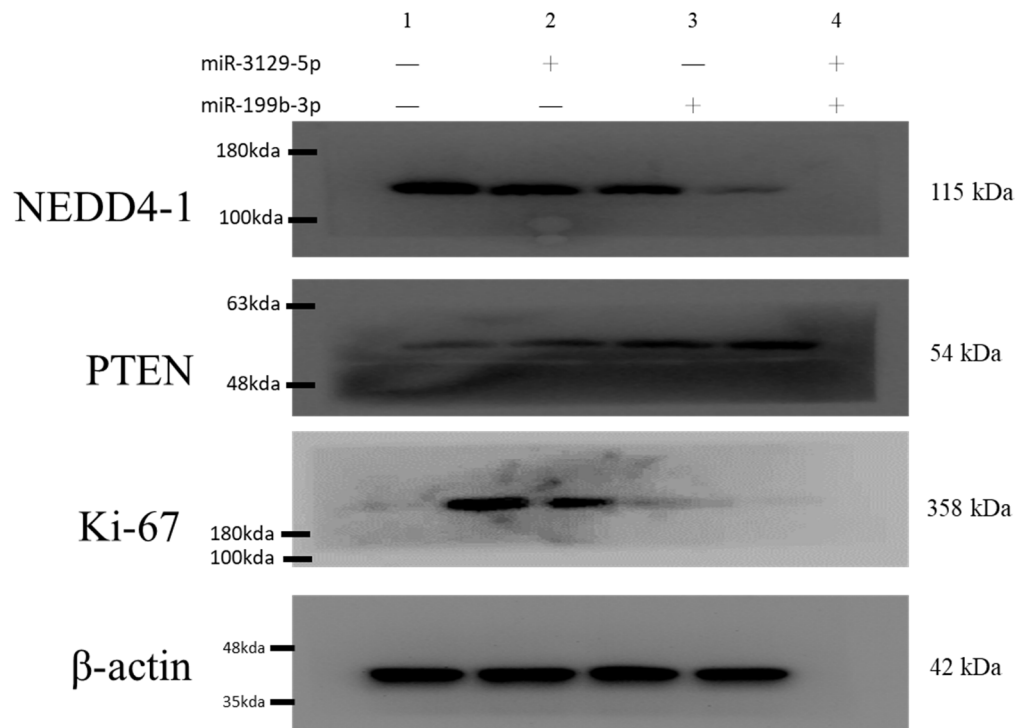
**Supplementary Table S1.** Western blot antibodies sheet.

| No. | Target         | Dilution | MW  | Source     |               |
|-----|----------------|----------|-----|------------|---------------|
| 1   | NEDD4-1        | 1:1000   | 115 | #2740      | cellsignaling |
| 2   | PTEN           | 1:1000   | 54  | #9188      | cellsignaling |
| 3   | p-Akt          | 1:1000   | 60  | #4060      | cellsignaling |
| 4   | Akt            | 1:1000   | 60  | #9272      | cellsignaling |
| 5   | SOX2           | 1:1000   | 40  | ab97959    | abcam         |
| 6   | NESTIN         | 1:1000   | 177 | ab105389   | abcam         |
| 7   | N-Cadherin     | 1:1000   | 140 | #13116     | cellsignaling |
| 8   | E-Cadherin     | 1:1000   | 135 | #3195      | cellsignaling |
| 9   | Vimentin       | 1:1000   | 57  | #5741      | cellsignaling |
| 10  | Hrf2           | 1:1000   | 23  | sc-133131  | SANTA CRUZ    |
| 11  | HO-1           | 1:1000   | 32  | sc-390991  | SANTA CRUZ    |
| 12  | Ki-67          | 1:500    | 358 | ab16667    | abcam         |
| 13  | $\beta$ -actin | 1:10000  | 42  | 66009-1-Ig | PROTEINTECH   |

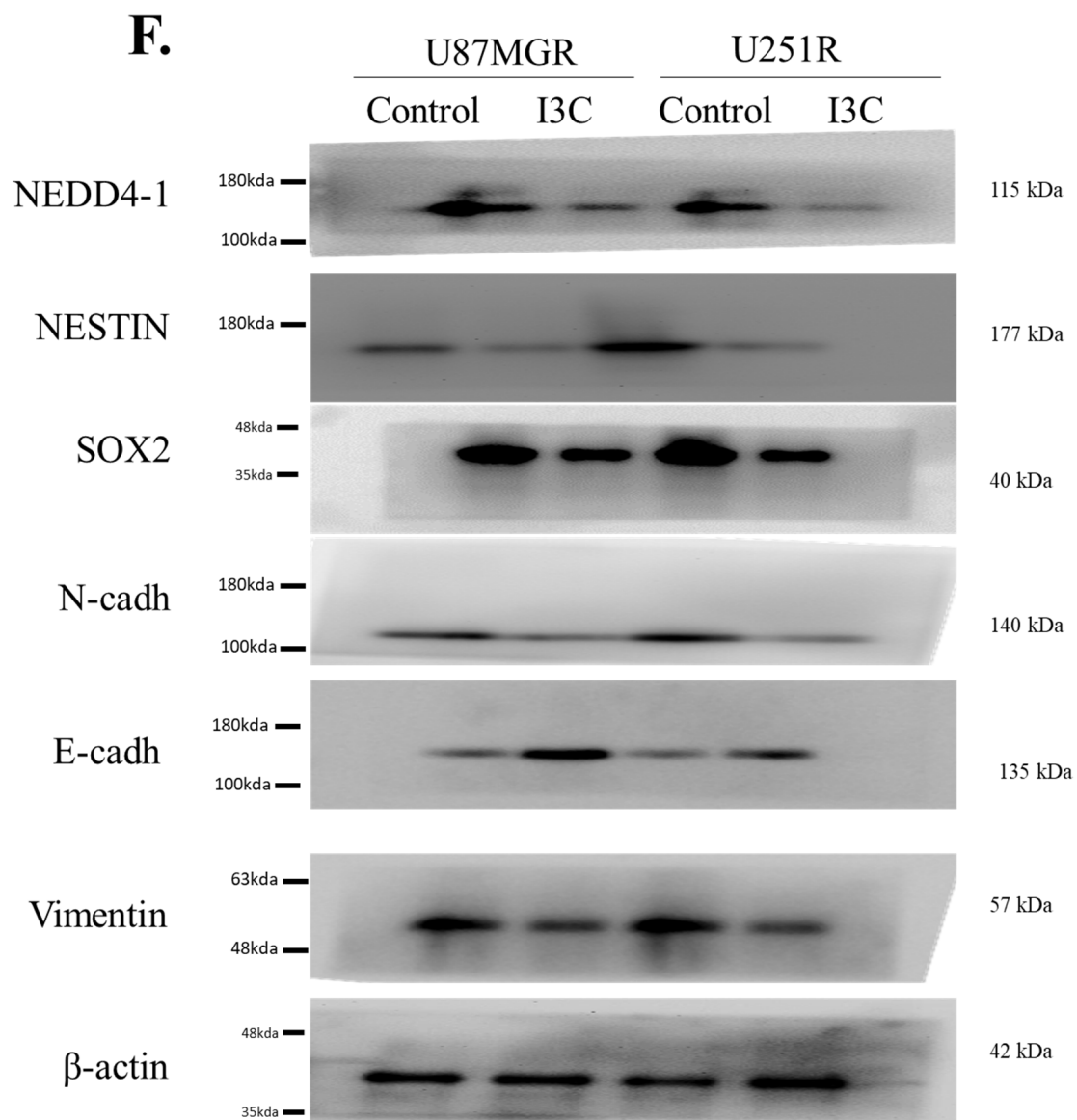


Supplementary Figure S1. Full-size blots of Figure 2A and 2D

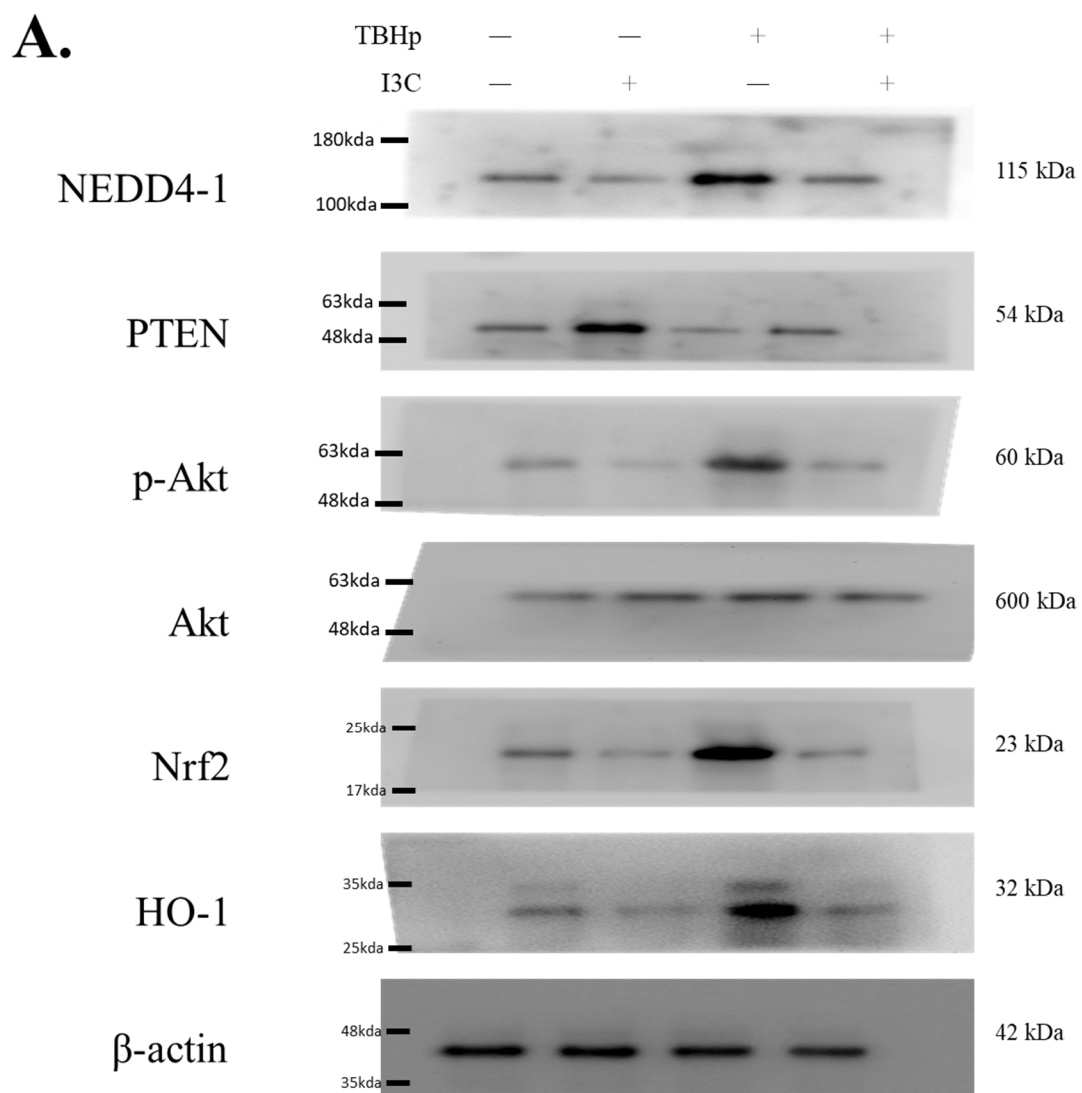
**E.**



Supplementary Figure S2. Full-size blots of Figure 3E



Supplementary Figure S3. Full-size blots of Figure 4F



Supplementary Figure S4. Full-size blots of Figure 5A