

Supplementary Materials:

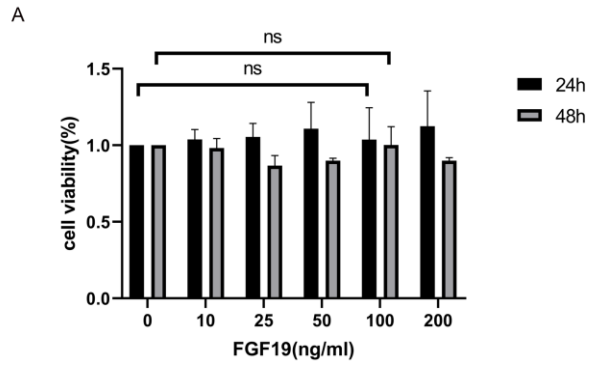


Figure S1. Effects of hFGF19 on SCC-15 cells. SCC-15 cells were treated with different concentration of hFGF19 (0, 10, 25, 50, 100, 200 ng/ml) for 24 h and 48 h. (A): Cell viability tested by CCK-8.

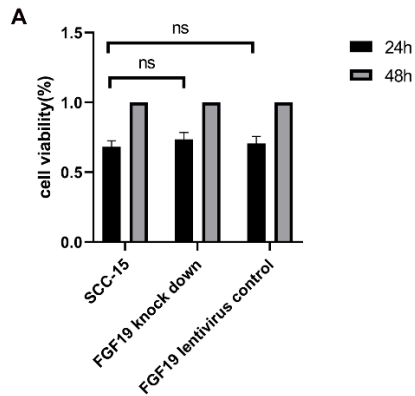


Figure S2. Cell viability of SCC-15 cells transfected with sh-NC-Vector and sh-FGF19-vector. SCC-15 cells, SCC-15 cells transfected with sh-NC-Vector and sh-FGF19-vector were incubated for 24 h and 48 h. (A): Cell viability tested by CCK-8.