



Supplementary

Myeloid Lineage Ablation of *Phlpp1* Regulates M-CSF Signaling and Tempers Bone Resorption in Female Mice

Ismael Y. Karkache ¹, Jeyaram R. Damodaran ¹, David H. H. Molstad ¹, Kim C. Mansky ², and Elizabeth W. Bradley ^{1,3,*}

¹ Department of Orthopedics, School of Medicine, University of Minnesota, Minneapolis, MN 55455, USA; karka010@umn.edu (I.Y.K.); damod015@umn.edu (J.R.D.); molst031@umn.edu (D.H.H.M.)

² Division of Orthodontics, Department of Developmental and Surgical Services, Institute for Virology, School of Dentistry; University of Minnesota, Minneapolis, MN 55455, USA, kmansky@umn.edu

³ Stem Cell Institute, University of Minnesota, Minneapolis, MN 55455, USA

* Correspondence: ebradle1@umn.edu

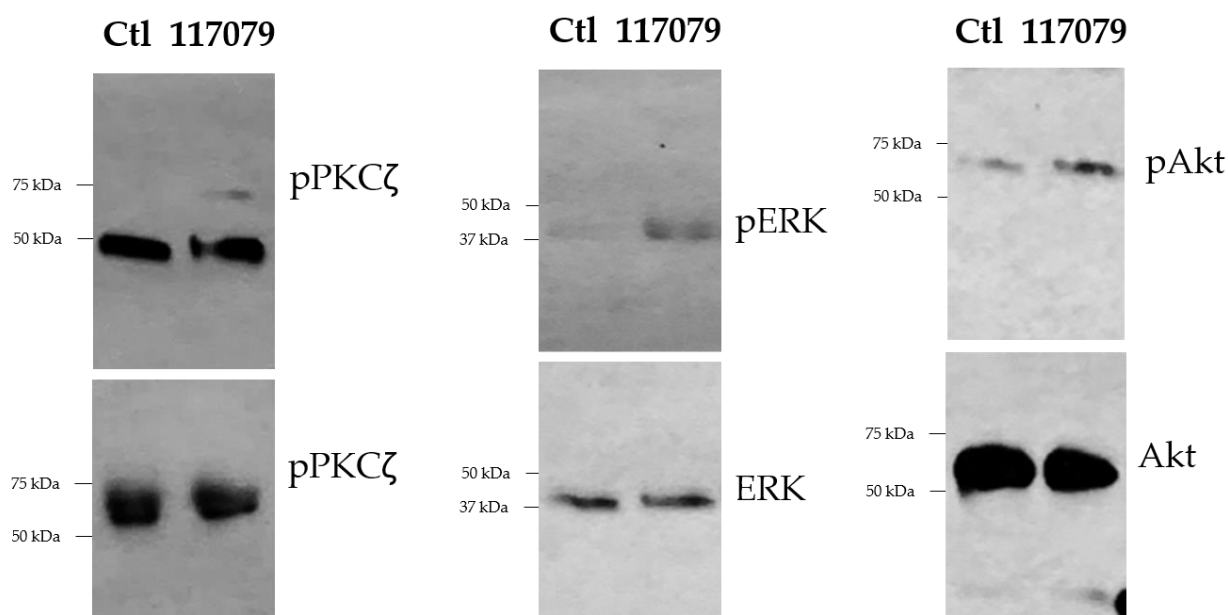


Figure S1. Uncropped blots from Figure 6D.