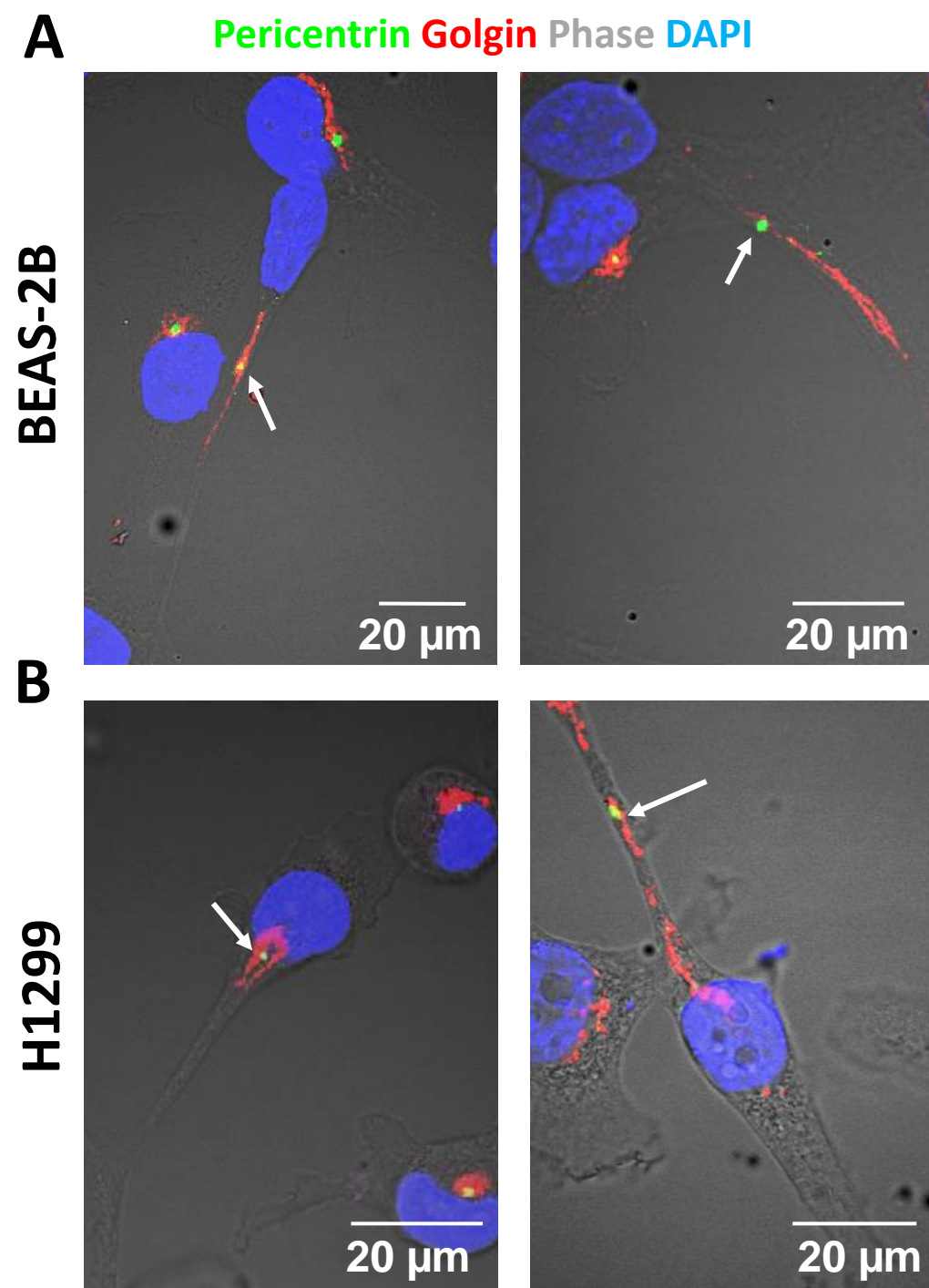
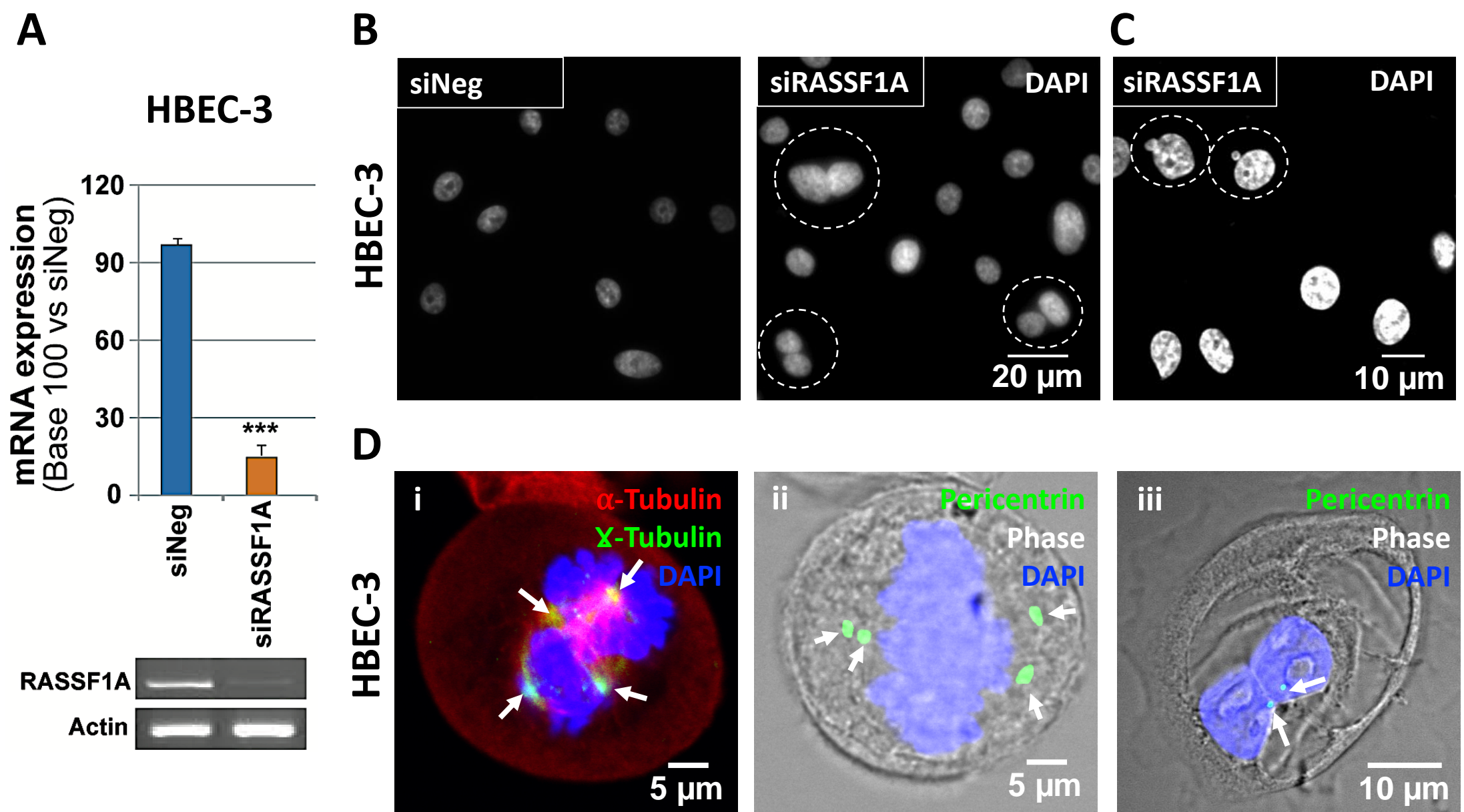


**Figure 1 supplementary: The centrosome polarizes towards TNT-1 protrusion sites.** Representative images of centrosome orientation towards TNTs-1 formation site in H1299 (A), A549 (B) and BEAS-2B (C), three tumorigenic epithelial cell lines. Arrows indicate centrosome position. Boxed regions used for the zoom.

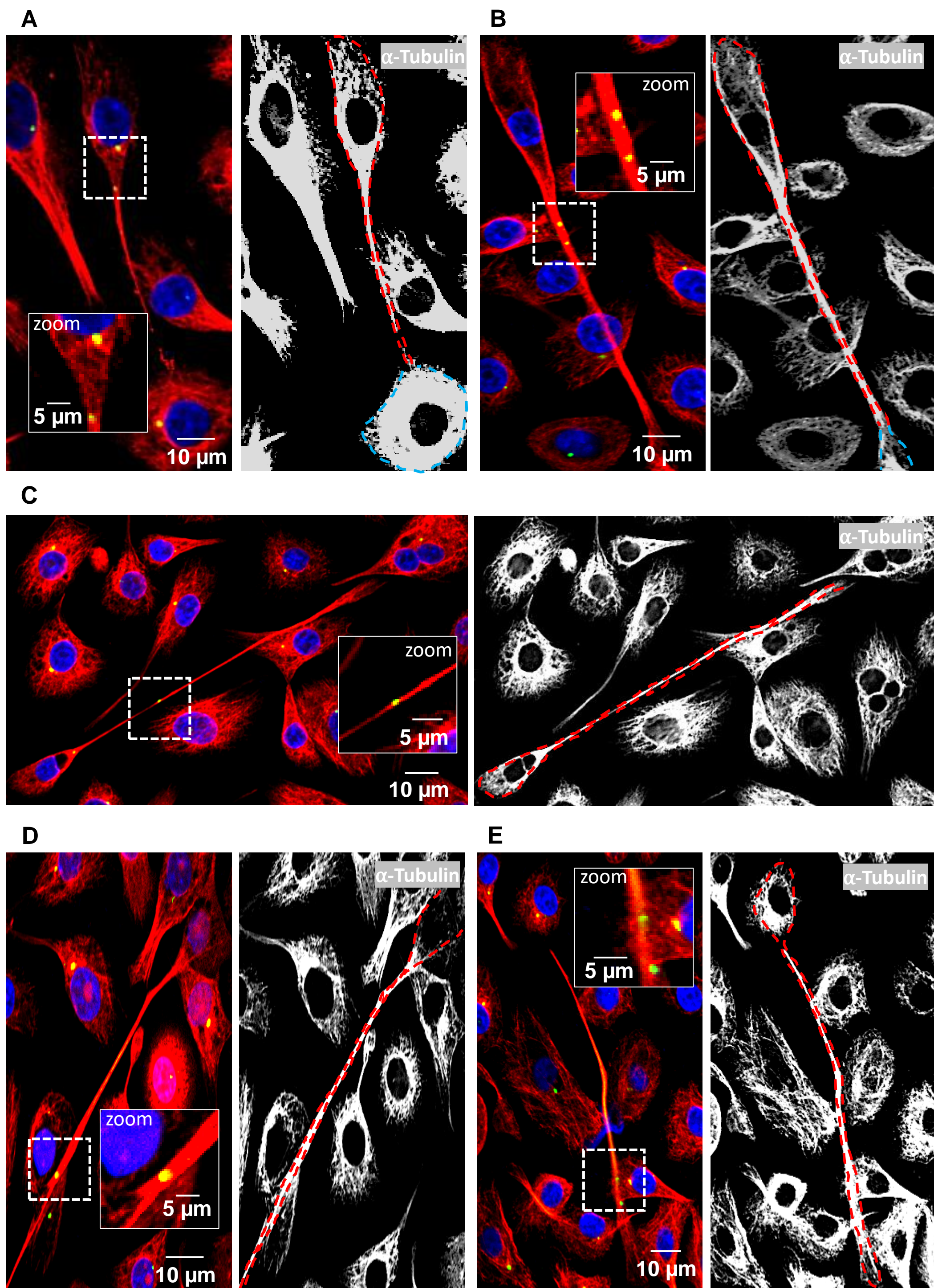


**Figure 2 Supplementary: The pericentrosomal localization of the Golgi towards the site of TNT-1 formation.** Two representative images of pericentrosomal Golgi orientation towards TNTs-1 formation site in BEAS-2B (**A**) and H1299 (**B**), two tumorigenic epithelial cell lines. Arrows indicate centrosome position.



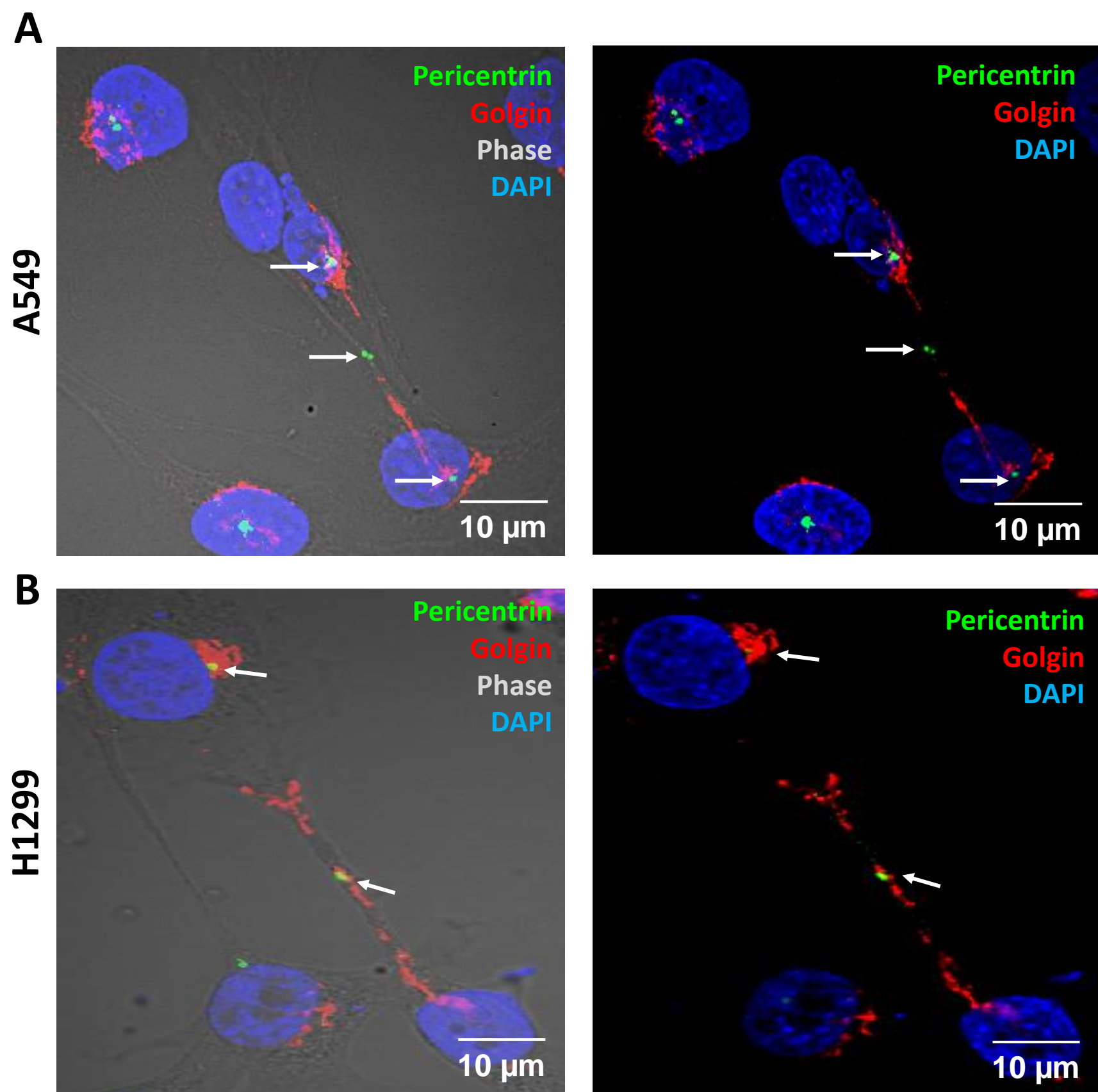
**Figure 3 supplementary: In results of centrosome abnormalities, RASSF1A depletion reduces the fidelity of DNA segregation.** **A)** Evaluation of the efficiency of RASSF1A RNAi by RT-qPCR. Representative images of nuclear atypia such as **B)** bi-nucleation (indicated by dashed circles) and **C)** micronuclei, as an indication of **D)** extra centrosome (i, ii) and mitotic spindle defects (iii). HBEC-3 cells transfected with either siNeg or siRASSF1A. Experiments were performed 72 hours after transfection. Arrows indicate centrosome position.





**Figure 4 supplementary: Centrosome localization within TNTs-1.** Representative images (A-E) of siRASSF1A-depleted HBEC-3 cells, showing centrosome localization within TNT-1 in HBEC-3 cell lines. Dashed red lines represent the perimeter of cells with TNT-1 and boxed regions used for the zoom.





**Figure 5 supplementary: Centrosome and Golgi localization within TNTs-1.** Representative images showing centrosome displacement through TNT-1 in lung epithelial A549 (**A**) and H1299 (**B**) tumorigenic cell lines with hypermethylated *RASSF1* gene. Arrows indicate centrosome position.

Non treated A549 cells +  
**HBEC-3<sup>Cherry</sup> siRASSF1A**  
(transfected with GFP-centrin)

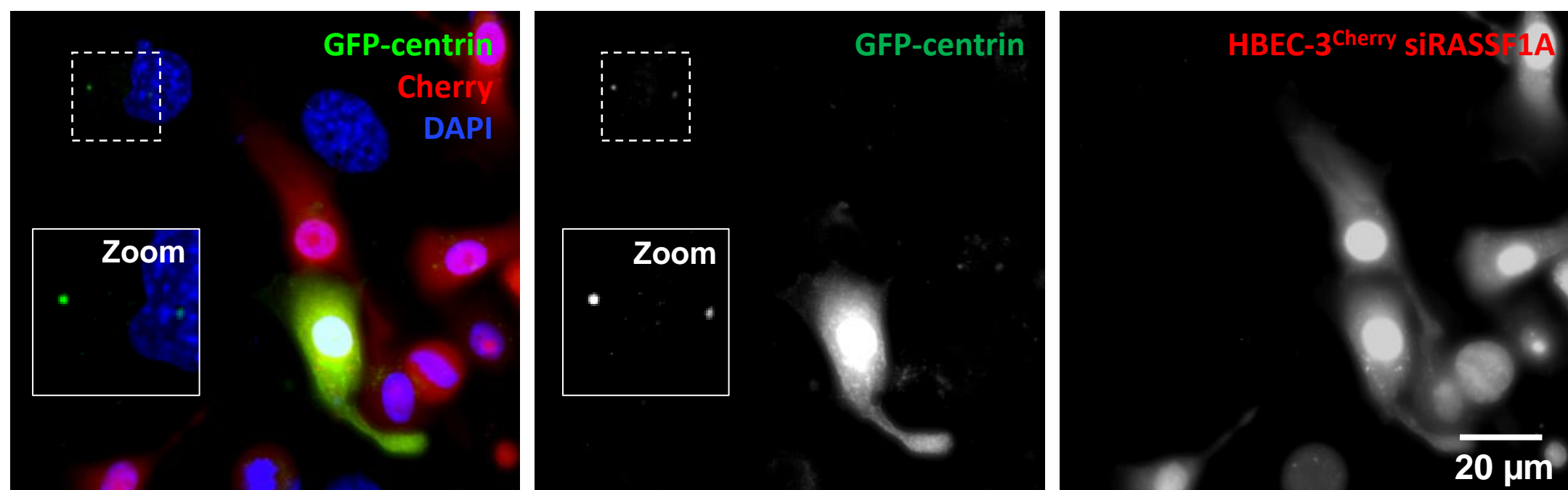


Figure 6 supplementary: Representative images showing displacement of centrosome (signal of GFP-centrin) from donor RASSF1A-depleted GFP-centrin transfected HBEC-3 cherry cells to acceptor non-treated A549 cells. Boxed regions used for the zoom.