

## Supplementary Materials

# Enhanced Thermostability of D-Psicose 3-Epimerase from *Clostridium bolteae* through Rational Design and Engineering of New Disulfide Bridges

Jingyi Zhao <sup>1,†</sup> · Jing Chen <sup>1,†</sup> · Huiyi Wang <sup>1</sup> · Yan Guo <sup>1</sup> · Kai Li <sup>1,2</sup> · Jidong Liu

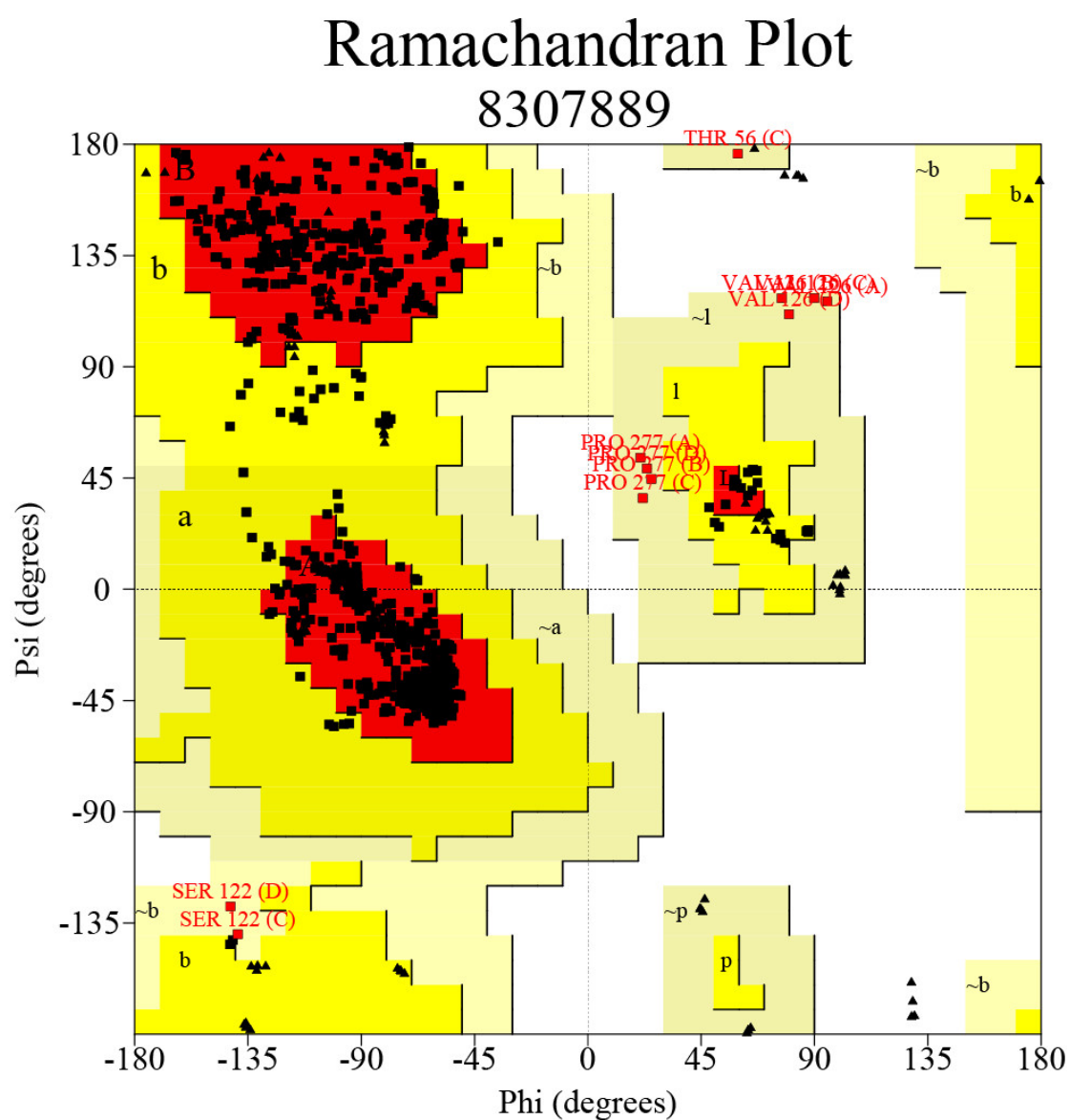
<sup>1,2,\*</sup>

<sup>1</sup> *College of Light Industry and Food Engineering, Guangxi University, 100 Daxue Road, Nanning 530004, Guangxi, China*

<sup>2</sup> *Sugar Industry Collaborative Innovation Center, Guangxi University, 100 Daxue Road, Nanning 530004, Guangxi, China*

\* Corresponding author. Tel: +86 771 3237329. Fax: +86 771 3231590  
E-mail: liujd@gxu.edu.cn, liuan6126@126.com

† The first two authors contributed equally to this work.



**Figure S1.** Ramachandran plot of the *C. bolteae* DPEase model.