

Supplemental Data

Effects of Cardiolipin on Conformational Dynamics of Membrane-Anchored Bcl-xL

Vivek Tyagi ¹, Victor Vasquez-Montes ², J. Alfredo Freites ³, Alexander Kyrychenko ^{2,4}, Douglas J. Tobias ^{3,*} and Alexey S. Ladokhin ^{2,*}

¹ Department of Materials Science and Engineering, University of California, Irvine, CA 92697, USA

² Department of Biochemistry and Molecular Biology, The University of Kansas Medical Center, Kansas City, KS 66160, USA

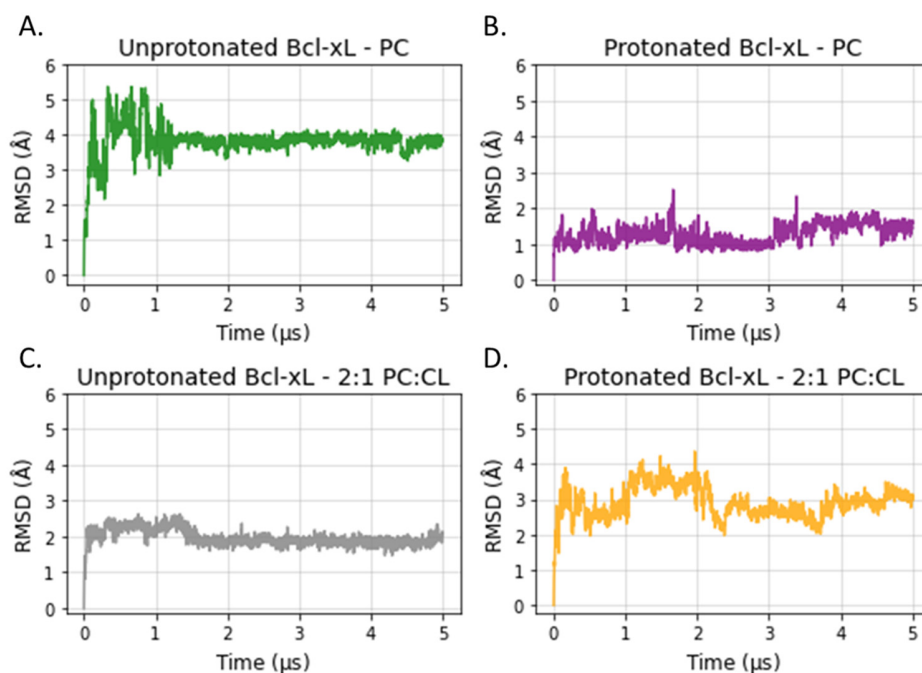
³ Department of Chemistry, University of California, Irvine, CA 92697, USA

⁴ Institute of Chemistry and School of Chemistry, V. N. Karazin Kharkiv National University, 4 Svobody Square, 61022 Kharkiv, Ukraine

* Correspondence: D. J. Tobias dtobias@uci.edu; Tel.: +1 949 824 4295

* Correspondence: A. S. Ladokhin aladokhin@kumc.edu; Tel.: +1 913 588 0489; Fax: +1 913-588-7440

Bcl-xL Soluble Head Helical Components



Supplemental Figure S1. RMSD of the soluble head (SH) components of Bcl-xL. RMSDs for all four simulated systems are shown as a function of time. RMSDs were calculated from the backbone (C, N) atoms of the helical residues in $\alpha 1$ through $\alpha 7$ without including any residues in the disordered regions linking the helices.