

Supplementary Material:

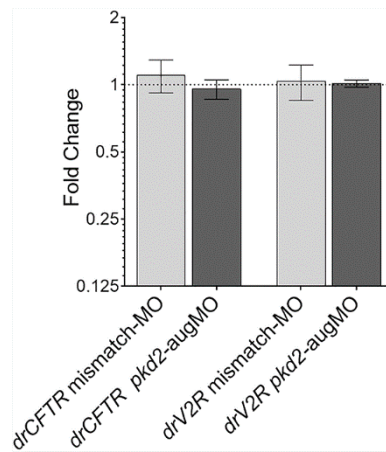


Figure S1 - mRNA levels of V2R and CFTR. Normalised fold expression (Log2) of the two genes are presented as determined in a KV specific microarray data (unpublished data) for both mismatch-MO control (light grey bars) and *pkd2*-knockdown embryos (dark grey bars).

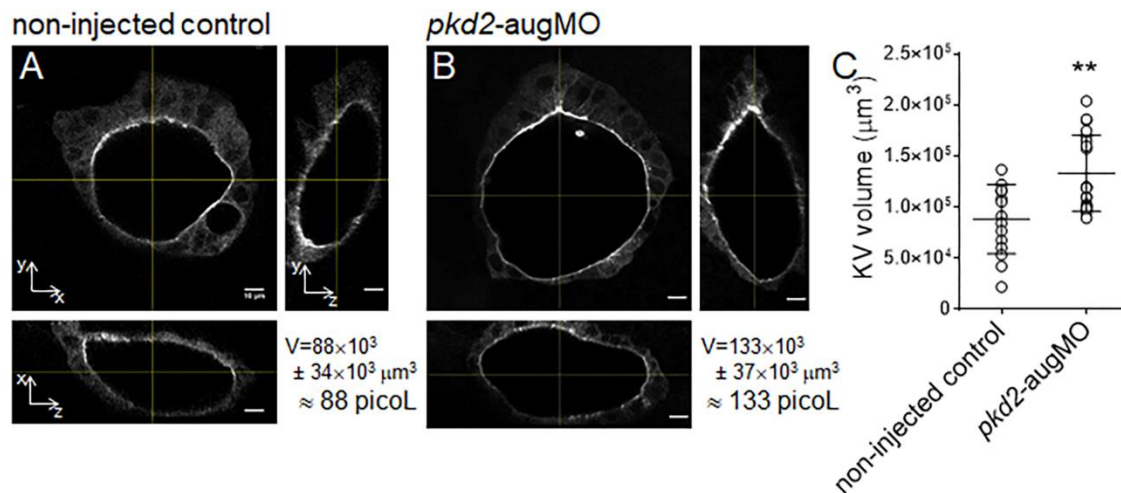


Figure S2 – *TgBAC(cftr-GFP)pd1041* embryos KV Volume. (A, B) Confocal live-microscopy scans of the whole KV of 10-11 ss *TgBAC(cftr-GFP)pd1041* embryos. The middle focal plane along the *xy* axis and the respective orthogonal views (along *xz* and *yz* axes) are shown for the most representative (A) non-injected control and (B) *pkd2*-knockdown embryos. KV_{volume} is indicated in μm^3 and pL. (C) Estimated KV volumes (μm^3) for non-injected control ($n=15$) and *pkd2*-knockdown ($n=20$) embryos. Mean \pm SD are indicated. As the *pkd2*-augMO injected embryos sample did not follow a normal distribution, the Mann-Whitney test was used to compare the *pkd2*-augMO versus non-injected embryos, ** $p < 0.01$. Scale bars: 10 μm .