

Supporting information for:

## Regular physical exercise modulates iron homeostasis in the 5xFAD mouse model of Alzheimer's disease

Irina Belaya<sup>1</sup>, Nina Kucháriková<sup>1</sup>, Veronika Górová<sup>1</sup>, Kai Kysenius<sup>2</sup>, Dominic J Hare<sup>3,4</sup>, Peter J Crouch<sup>2</sup>, Tarja Malm<sup>1</sup>, Mustafa Atalay<sup>5</sup>, Anthony R White<sup>6</sup>, Jeffrey R Liddell<sup>2</sup>, Katja M Kanninen<sup>1,\*</sup>

<sup>1</sup> A.I. Virtanen Institute for Molecular Sciences, University of Eastern Finland, 70211, Kuopio, Finland;

irina.belaia@uef.fi (I.B.); ninkucha@uef.fi (N.K.); veronika.gorova@uef.fi (V.G.); tarja.malm@uef.fi (T.M.)

<sup>2</sup> Department of Biochemistry and Pharmacology, The University of Melbourne, Melbourne, 3010 Victoria, Australia;

kai.kysenius@unimelb.edu.au (K.K.); pjcrouch@unimelb.edu.au (P.J.C.); jliddell@unimelb.edu.au (J.R.L.)

<sup>3</sup> School of BioSciences, The University of Melbourne, Melbourne, 3010 Victoria, Australia;

dominic.hare@uts.edu.au (D.J.H.)

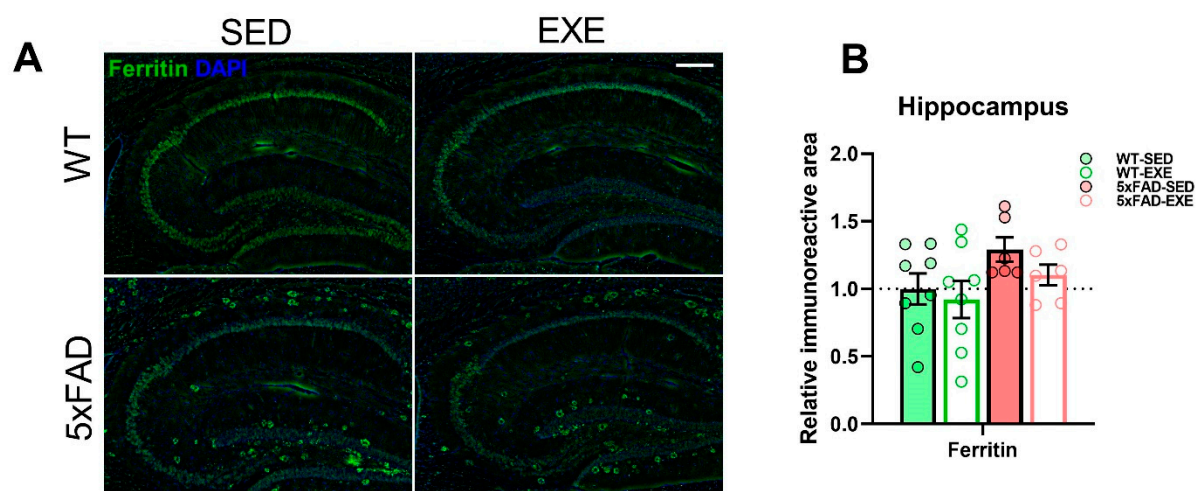
<sup>4</sup> Atomic Medicine Initiative, University of Technology Sydney, Broadway, 2007 New South Wales, Australia

<sup>5</sup> Institute of Biomedicine, University of Eastern Finland, 70211 Kuopio, Finland; mustafa.atalay@uef.fi (M.A.)

<sup>6</sup> Mental Health Program, QIMR Berghofer Medical Research Institute, Herston, 4006 Queensland, Australia;

tony.white@qimrberghofer.edu.au (A.R.W.)

\* Correspondence: katja.kanninen@uef.fi (K.M.K.)



**Supplementary Figure S1.** Effect of regular exercise on ferritin level in hippocampi. Representative images of A $\beta$  ferritin (**A**) in the hippocampal area of WT-SED, WT-EXE, 5xFAD-SED, 5xFAD-EXE mice. Scale bars: 200  $\mu$ m. Percentage of immunoreactive area was quantified to measure ferritin (**B**) levels in hippocampi. All data are relative to WT-SED values and presented as mean ( $\pm$ SEM). n=8/group.