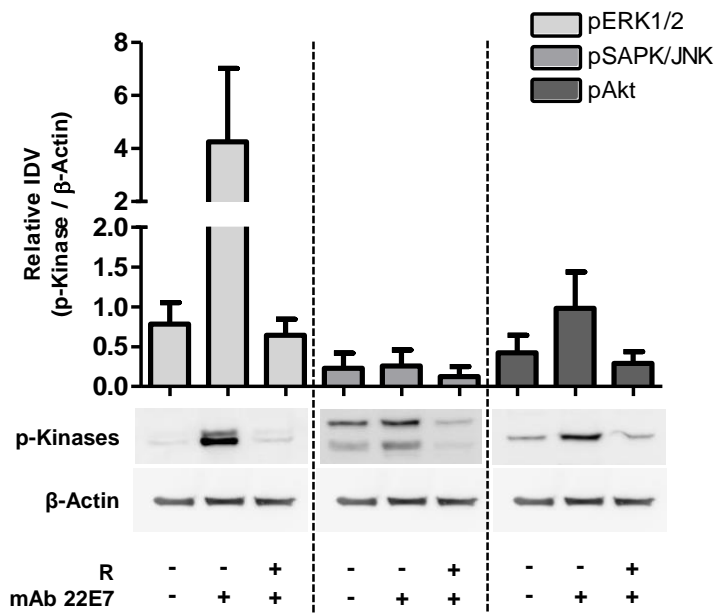


**Figure S1.** Cell viability determined by MTT assay of human intestinal mast cells (hiMC) following treatment with resveratrol. Cells were incubated with 1, 5, 10, 25, 50 and 100 µM resveratrol and the corresponding DMSO control for 24h. After incubation, MTT assay was conducted. Absorbance in percent of the DMSO control is shown (n = 3).



**Figure S2.** IgE-mediated phosphorylation of extracellular signal-regulated kinase (ERK1/2), stress-activated protein kinases (SAPK)/Jun amino-terminal kinases (JNK) and protein kinase B (Akt) in hiMC following treatment with resveratrol. Western Blot analyses of phosphorylated ERK1/2, phosphorylated SAPK/JNK and phosphorylated Akt in hiMC (n = 2). HiMC were treated with 50  $\mu$ M resveratrol (R) or corresponding concentration of vehicle DMSO (control) before stimulation by Fc $\epsilon$ RI cross-linking using 100 ng/ml mAb 22E7 for 5 min. Representative pictures and densitometric analyses in relation to  $\beta$ -actin are shown. Values are mean  $\pm$  SEM.