

***Mycobacterium tuberculosis* RpfE-induced prostaglandin E2 in dendritic cells induces Th1/Th17 cell differentiation**

Hye-Soo Park, Seunga Choi, Young Woo Back, Kang-In Lee, Han-Gyu Choi\*, Hwa-Jung Kim\*

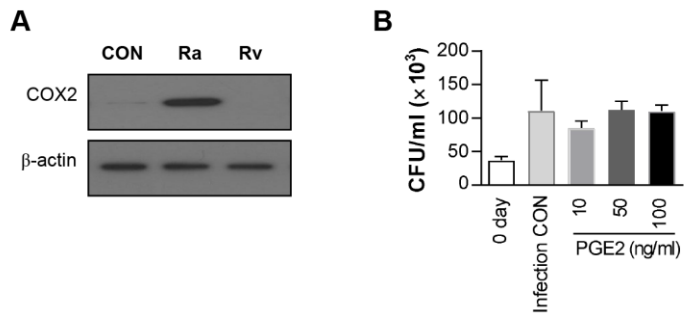
Department of Microbiology, Brain Korea 21 FOUR Project for Medical Science, College of Medicine, Chungnam National University, Daejeon, Republic of Korea

\*For correspondence

Hwa-Jung Kim, E-mail: [hjukim@cnu.ac.kr](mailto:hjukim@cnu.ac.kr)

Han-Gyu Choi, Email: [ekdrms20000@cnu.ac.kr](mailto:ekdrms20000@cnu.ac.kr)

Keywords: tuberculosis, dendritic cell maturation, PGE2, Th1/Th17 differentiation, Naïve T cell differentiation, multifunctional T cell



**Supplementary Figure 1. Confirmation of prostaglandin E2 (PGE2) production in infected macrophages and the inhibitory effect of PGE2 on *Mycobacterium tuberculosis* (Mtb) growth.** (A) The level of COX2 expression in Mtb-infected macrophages was assessed by immunoblotting. (B) Bone marrow-derived macrophages (BMDMs) were treated with PGE2. Intracellular Mtb growth in the BMDMs was determined after 3 days.