

trichodiene

2-hydroxytrichodiene

12,13-epoxy-9,10-trichoene-2-ol

isotrichodiol

isotrichotriol

trichotriol

isotrichodermol

MW = 204.36
[M+H]⁺ = 205

MW = 220.36
[M+H]⁺ = 221

MW = 236.36
[M+H]⁺ = 237

MW = 252.53
[M+H]⁺ = 253

MW = 268.35
[M+H]⁺ = 269

MW = 268.35
[M+H]⁺ = 269

MW = 250.34
[M+H]⁺ = 251

221.30mz/12.23min

221.30mz/12.23min

221.41mz/12.21min

163.30mz/12.22min

203.30mz/12.25min

203.42mz/12.25min

203.18mz/12.24min

235.13mz/12.81min

235.17mz/12.03min

235.17mz/12.08min

237.30mz/13.21min

2-Hydroxytrichodiene

2-Hydroxytrichodiene

2-Hydroxytrichodiene

fragment of 2-hydroxytrichodiene

13 Hydroxy-tricho-2(12),9(10)-diene-3-one

13 Hydroxy-tricho-2(12),9(10)-diene-3-one

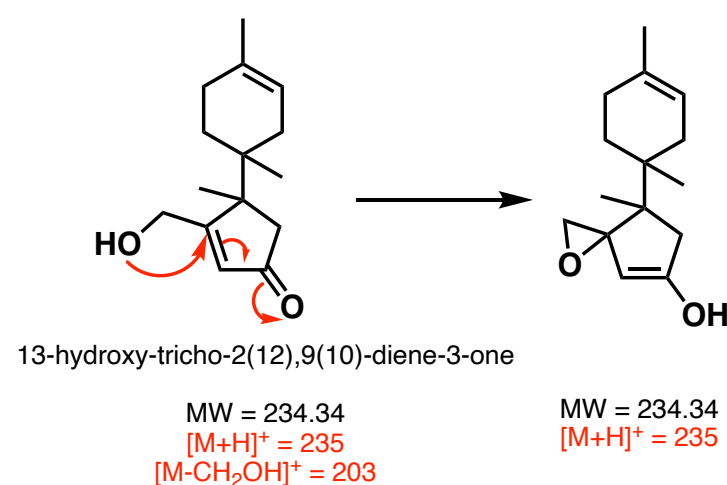
13 Hydroxy-tricho-2(12),9(10)-diene-3-one

13 Hydroxy-tricho-2(12),9(10)-diene-3-one

13 Hydroxy-tricho-2(12),9(10)-diene-3-one

13 Hydroxy-tricho-2(12),9(10)-diene-3-one

12,13-Epoxy-9,10-trichoene-2-ol



13-hydroxy-tricho-2(12),9(10)-diene-3-one

MW = 234.34
[M+H]⁺ = 235
[M-CH₂OH]⁺ = 203

MW = 234.34
[M+H]⁺ = 235