

Supplementary Figure

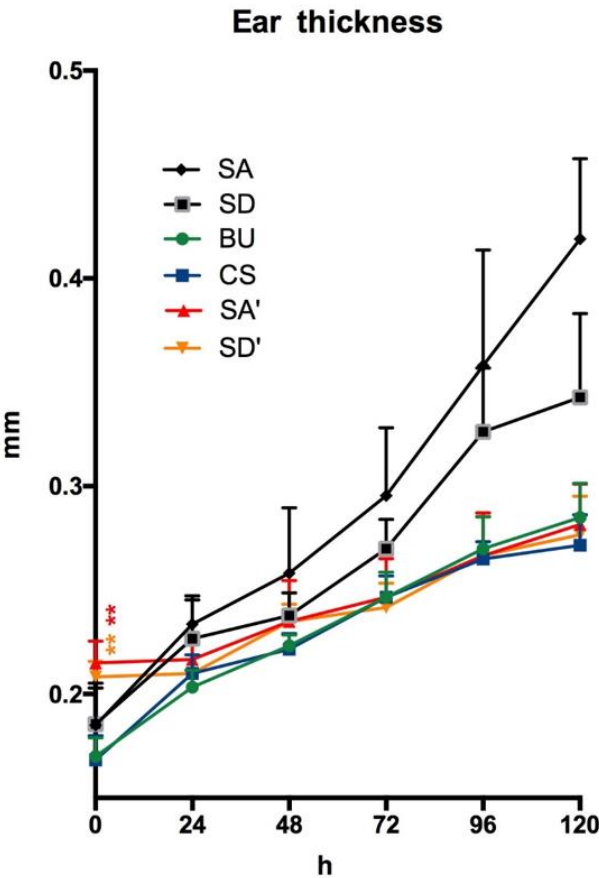


Figure S1: SA' and SD' were significantly thicker at 0hrs than BU and CS. At 72 hrs and 120hrs SA' and SD' had no significant difference than BU and CS. (** $p < 0.01$)

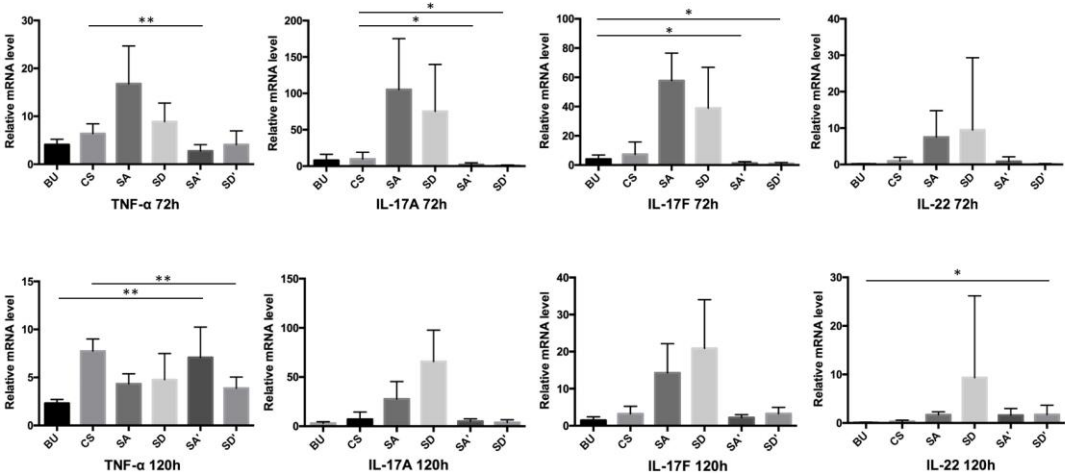


Figure S2: At 72hrs, SA' and SD' presented significantly lower TNF, IL-17A, IL-17F than BU and CS. At 120hrs, TNF- α was higher for SA' than BU but SD' was lower than CS. (* $p < 0.05$, ** $p < 0.01$)

Note: Significance is only compared between SA' and SD' and BU and CS on these figure.