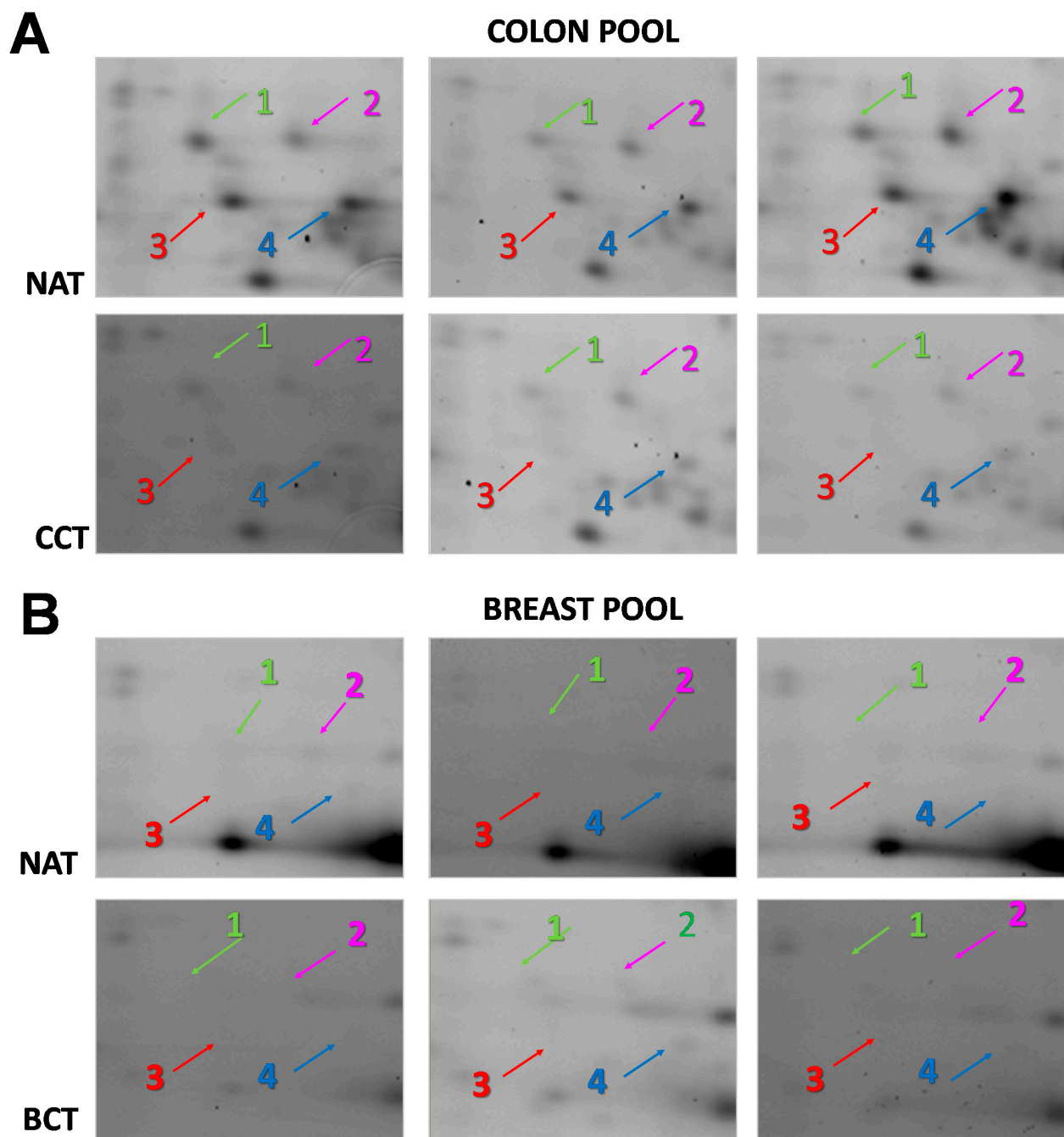
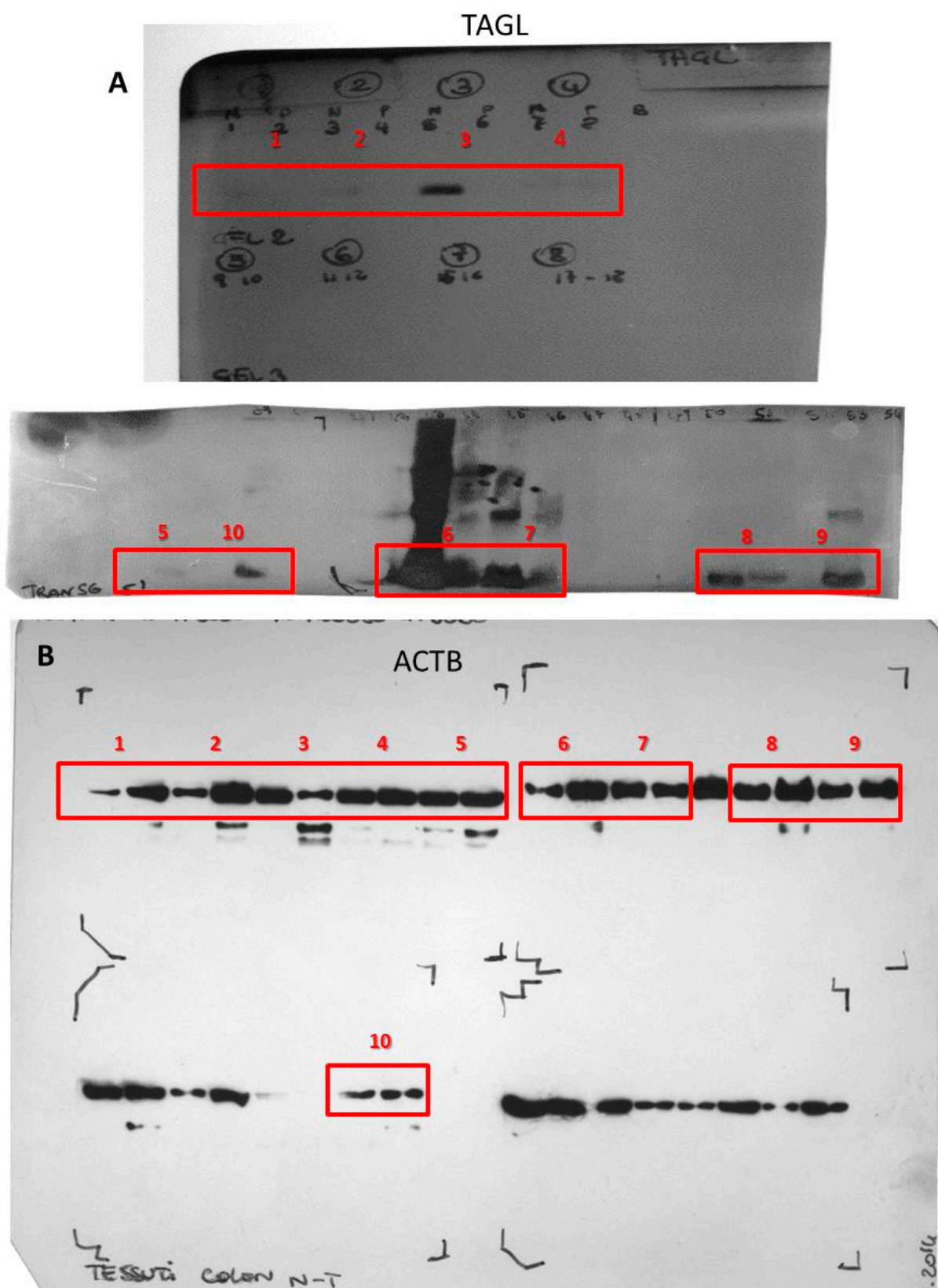


Supplementary Figure 1: SDS-PAGE (Sodium dodecyl sulfate –polyacrilamide-gel electrophoresis) of total protein extracts from 26 colon cancer tissues (CT) and paired normal tissues (NT) after staining with Blue Coomassie.



Supplementary Figure 2: Details of proteomic maps (2D-DIGE) of colon **A**) and breast **B**) pools (both cancer and normal adjacent tissues) showing the different TAGL identified protein species.



Supplementary Figure 3: Original western blots of TAGL **A**) and ACTB **B**).