

Supplementary

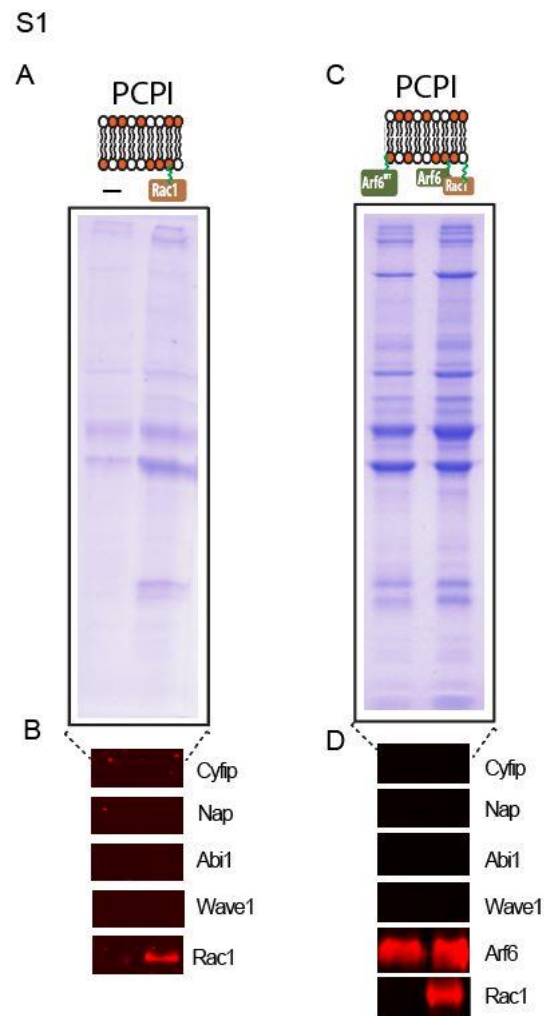


Figure S1. Coomassie blue staining depicting recruited protein from porcine brain extract on control (-) and Rac1QL anchored PCPI lipid bilayers(A). (B) Immunoblotting of samples from (A) with indicated antibodies. (C) Coomassie blue staining depicting recruited protein from porcine brain extract on control Arf6WT (alone), and a combination of Arf6WT; Rac1QL anchored PCPI lipid bilayers. (D) Immunoblotting of samples from (C) depicting recruited proteins as indicated antibodies.

S2

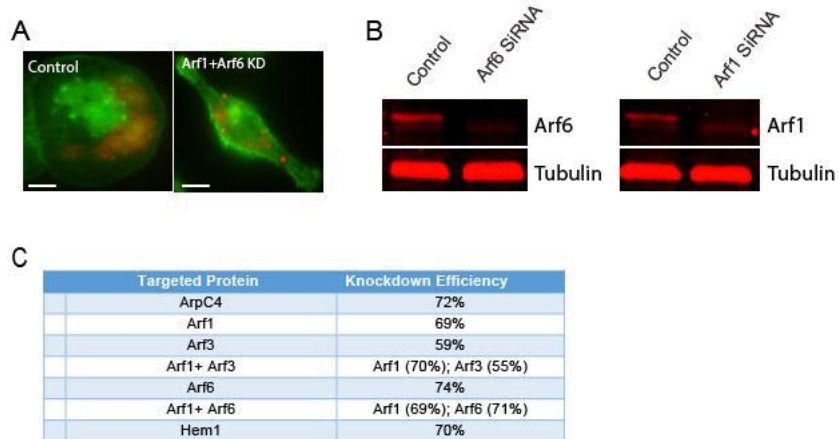


Figure S2. (A) Microscopy images depicting phagocytosis of labelled *E.coli* particles by PMA differentiated THP-1 macrophages (control) or upon silencing Arf1+Arf6 using siRNA. Internalized bacteria are shown in red while actin is stained using phalloidin (green). (B) Immunoblot confirming the silencing of the mentioned proteins using SiRNA. (C) Summarized Densitometric quantification depicting the efficiency of the silenced proteins as determined and normalized to control cell.