

Figure S1. Proportion of adipose-derived stem cells belonging to different subpopulations within each panel of markers. Bars denote mean + standard deviation from 3 independent donors. * $p < 0.05$, P, passage.

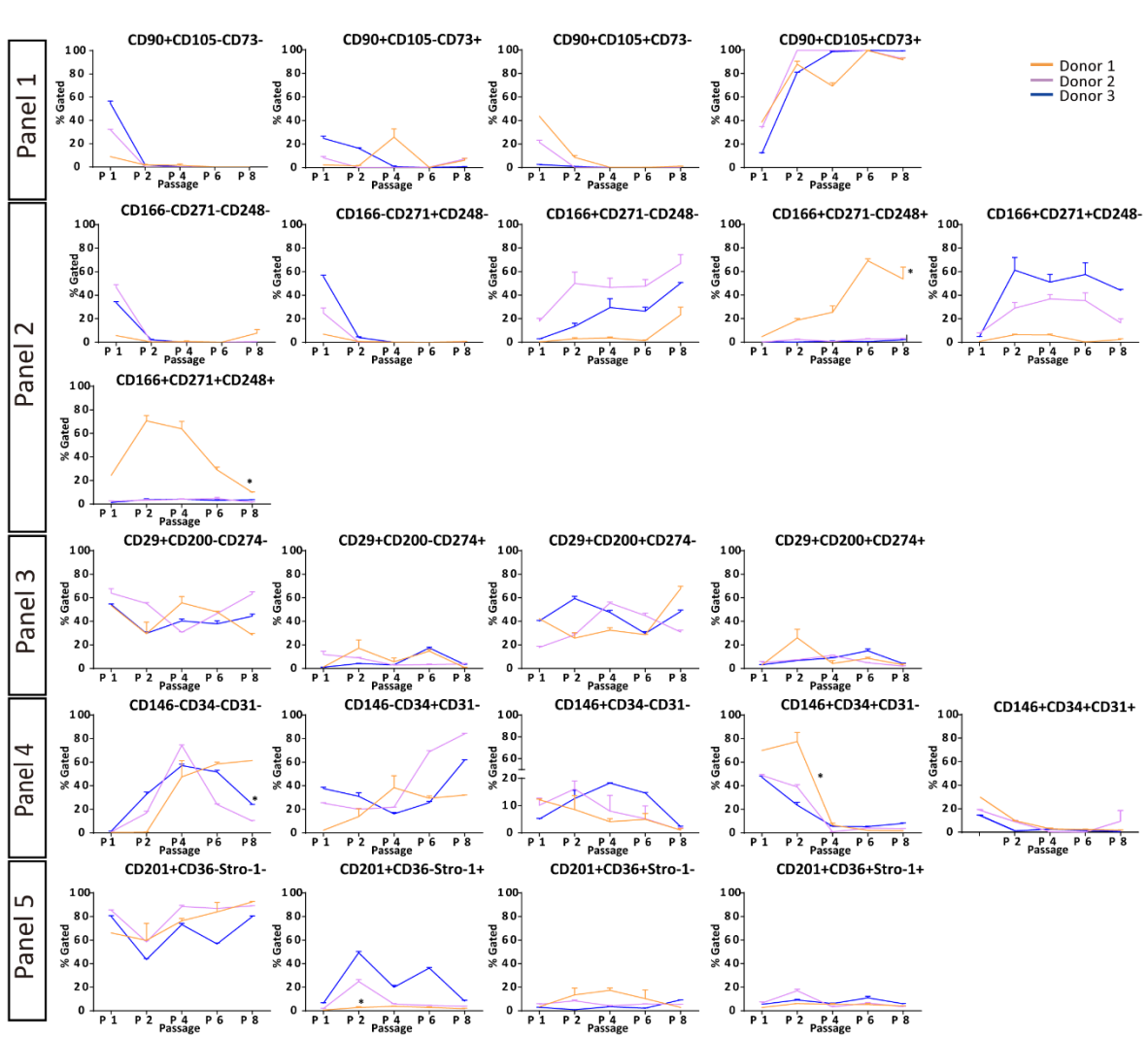


Figure S2. Interdonor variations of dynamic changes to surface marker profiles. Data is presented as average from repeated measurements of each donor ($n = 2-3$). * denotes statistically significant differences between donor 1 and both donor 2 and 3. $p < 0.05$. P, passage.