

Supplementary information

**Src/CK2/PTEN-mediated GluN2B and CREB dephosphorylations
regulate the response to AMPA receptor antagonist in chronic epilepsy rats**

Ji-Eun Kim^{1,2}, Duk-Shin Lee, Hana Park^{1,2}, and Tae-Cheon Kang^{1,2*}

¹Department of Anatomy and Neurobiology, College of Medicine, Hallym University, Chuncheon 24252,
South Korea

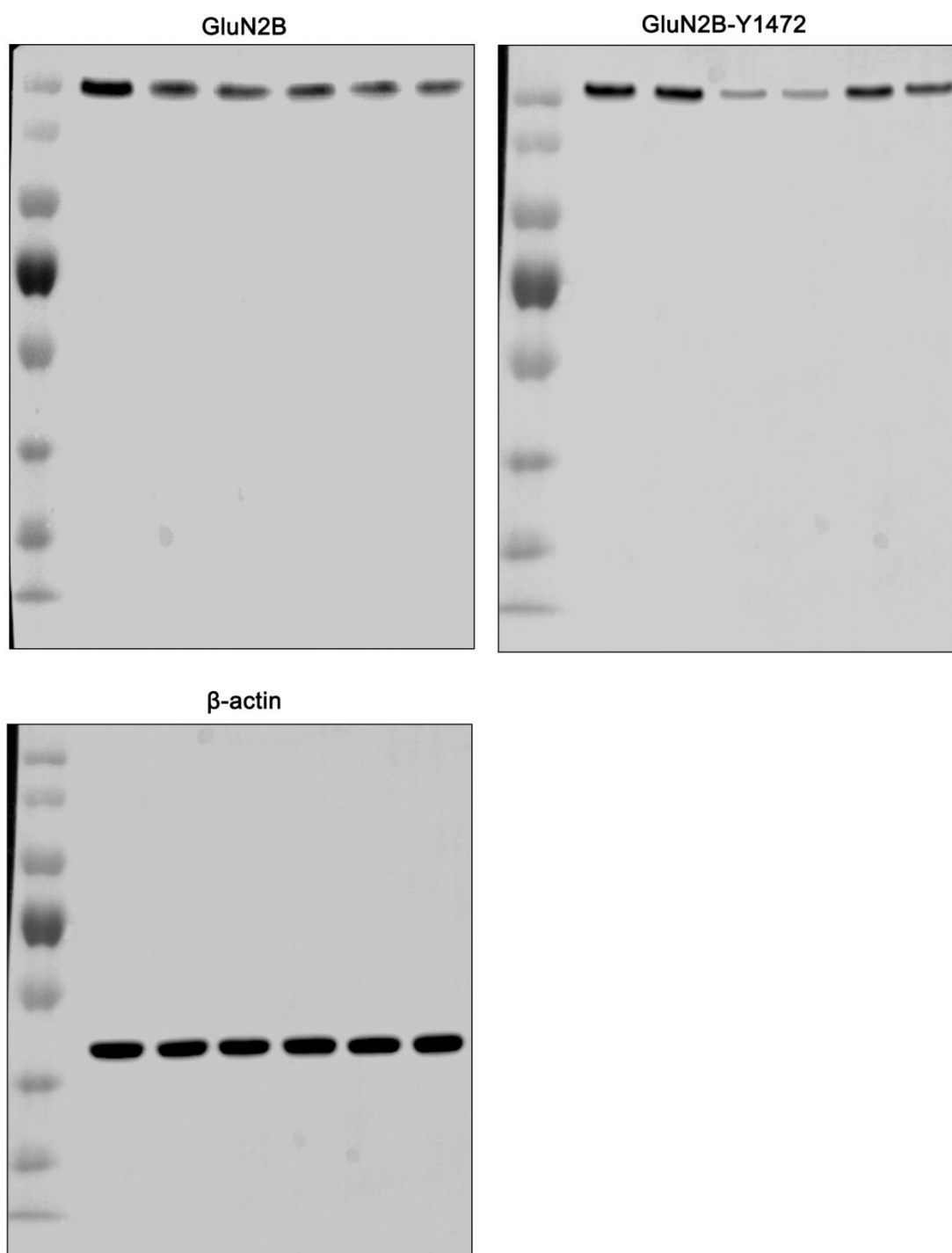
²Institute of Epilepsy Research, College of Medicine, Hallym University, Chuncheon 24252, South Korea

* Correspondence to: T. -C. Kang, Department of Anatomy and Neurobiology, College of Medicine, Hallym University, Chuncheon, Kangwon-Do 24252, South Korea; Tel: +82-33-248-2524; Fax: +82-33-248-2525; E-mail: tckang@hallym.ac.kr

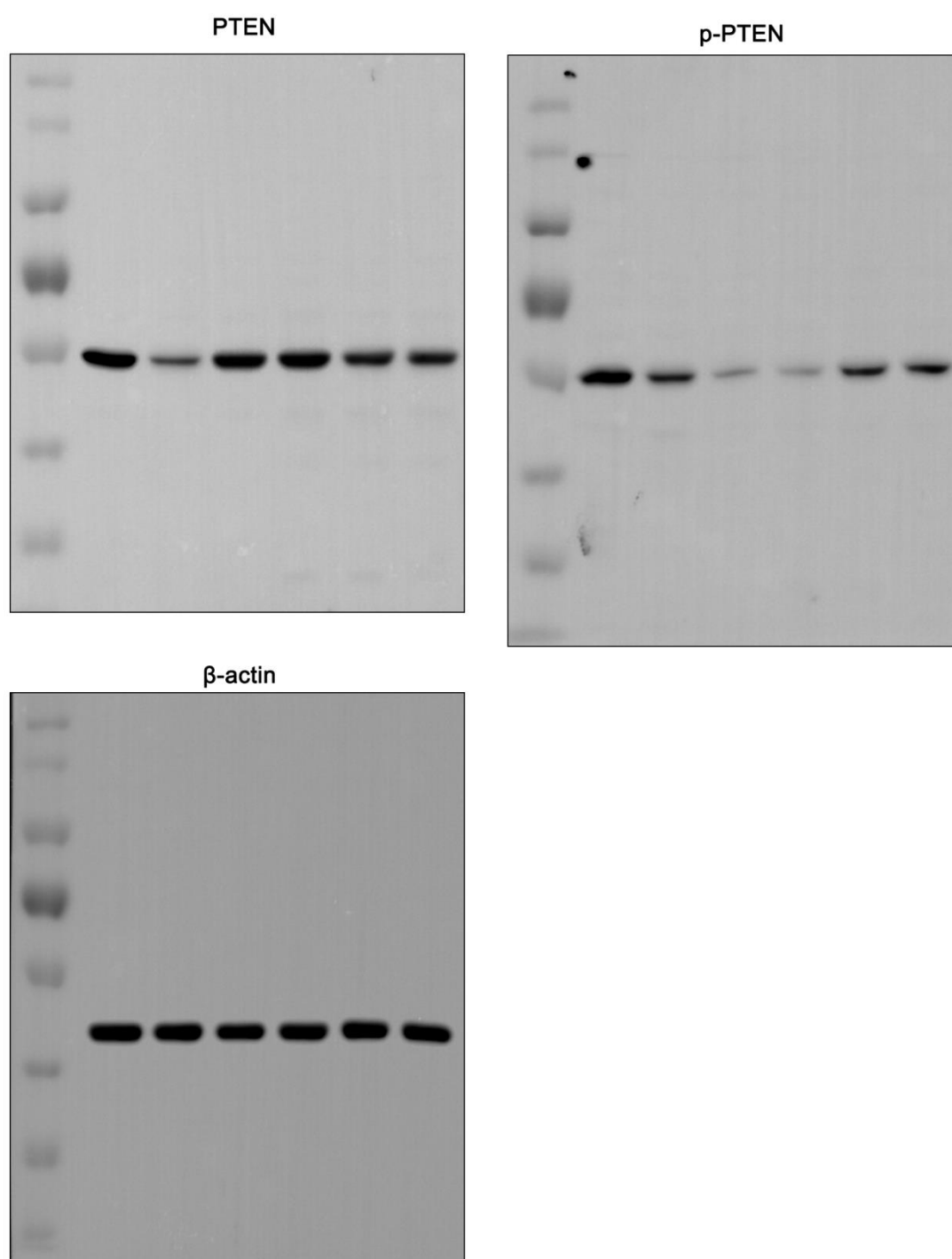
Supplementary Table 1. Average of weight and consumptions of food and water in each group

Group	Weight (g)	Food consumption (g/day)	Water consumption (ml/day)
Control	341 ± 28.1	32 ± 7.3	34 ± 5.5
Epilepsy (Vehicle)	317 ± 33.5	34 ± 8.1	28 ± 4.8
Responder (perampanel)	324 ± 19.3	29 ± 12.4	26 ± 7.9
Responder (GYKI 52466)	309 ± 21.8	27 ± 6.8	31 ± 3.8
Non-responder (perampanel)	298 ± 35.9	28. ± 9.4	28 ± 6.2
Non-responder (GYKI 52466)	301 ± 32.1	31. ± 7.7	32 ± 4.2

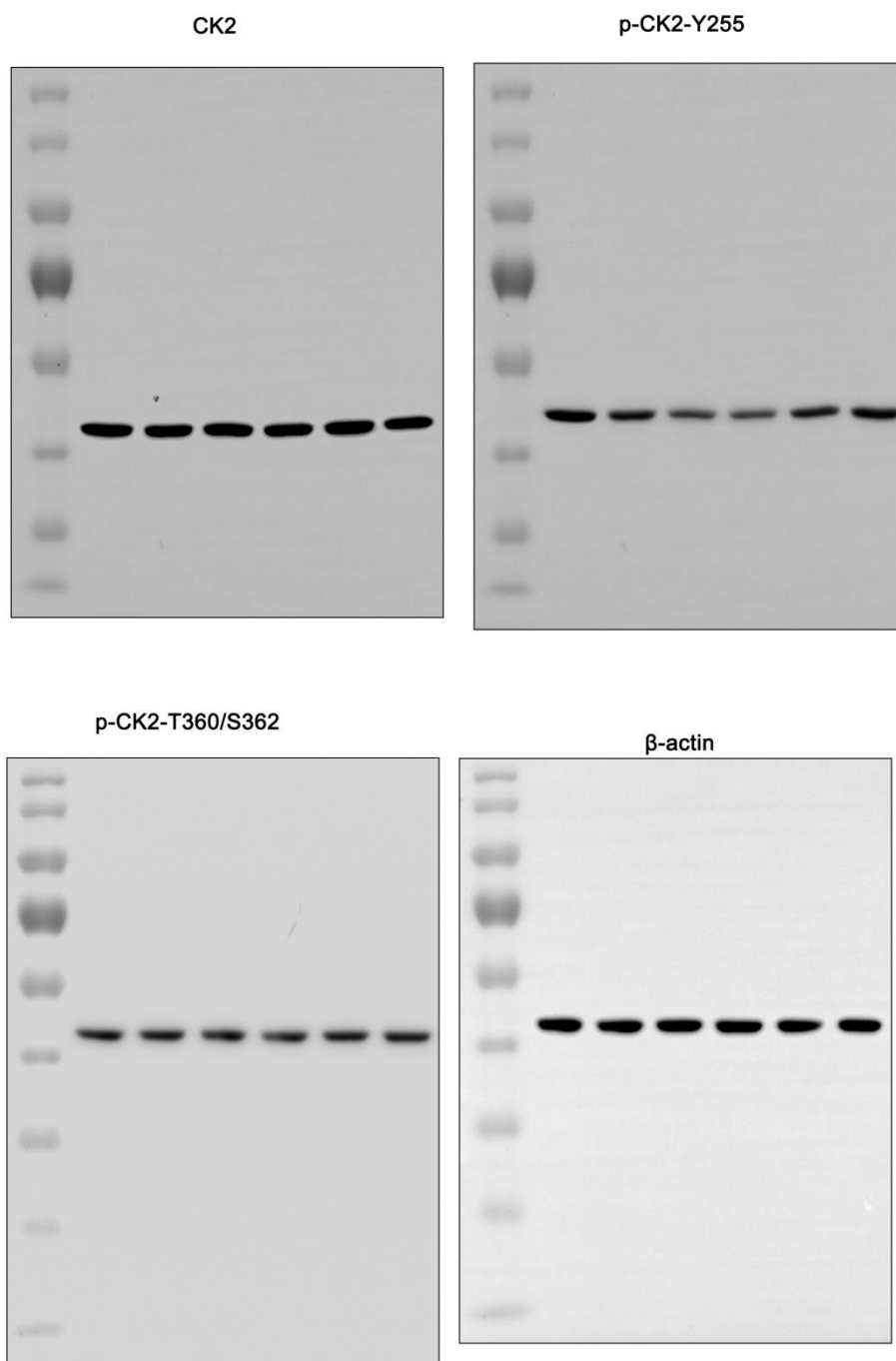
Mean ± SD; No statistical significance in each group.



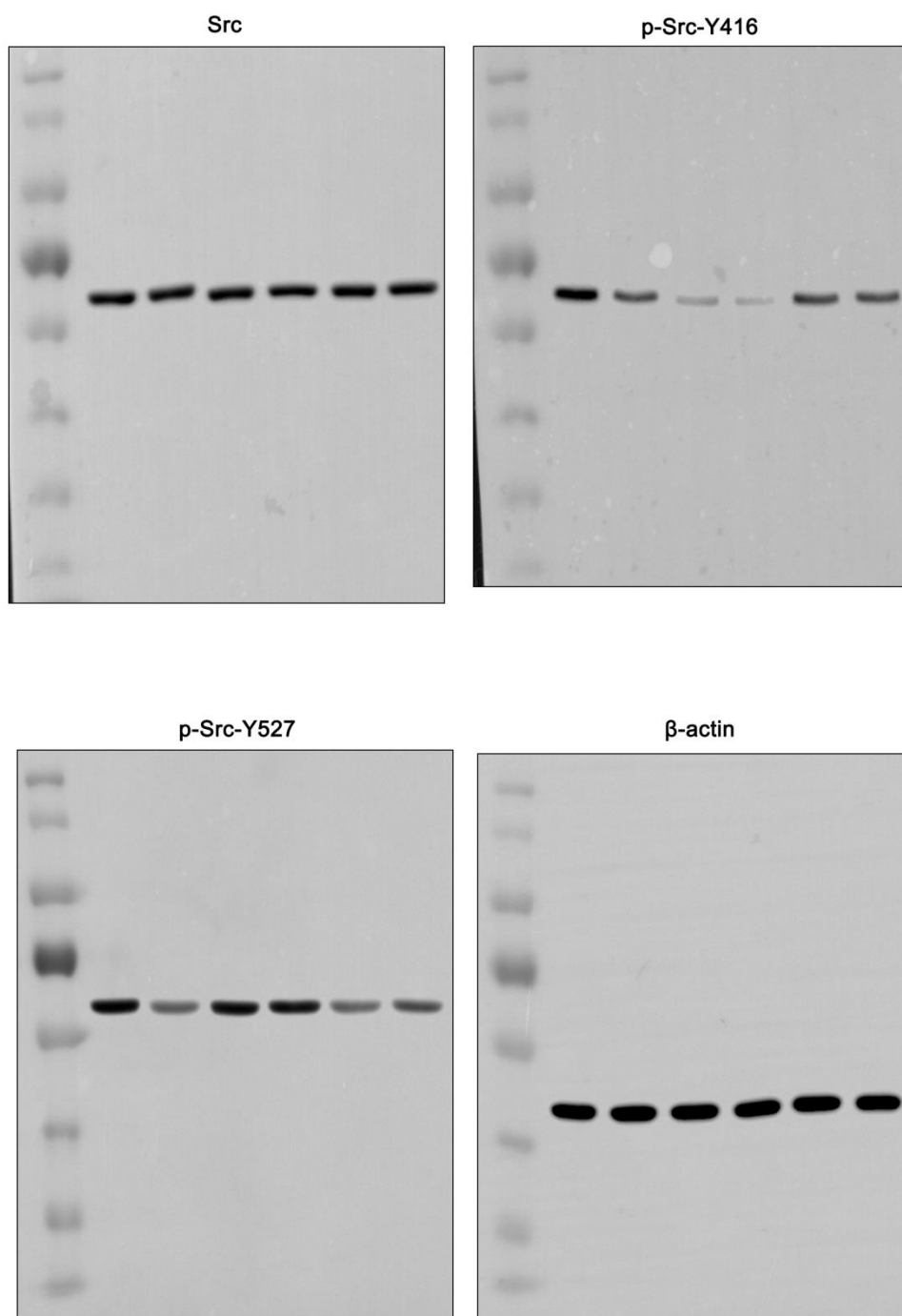
Supplementary Figure 1. Representative full-gel images of Western blots in Figure 2A.



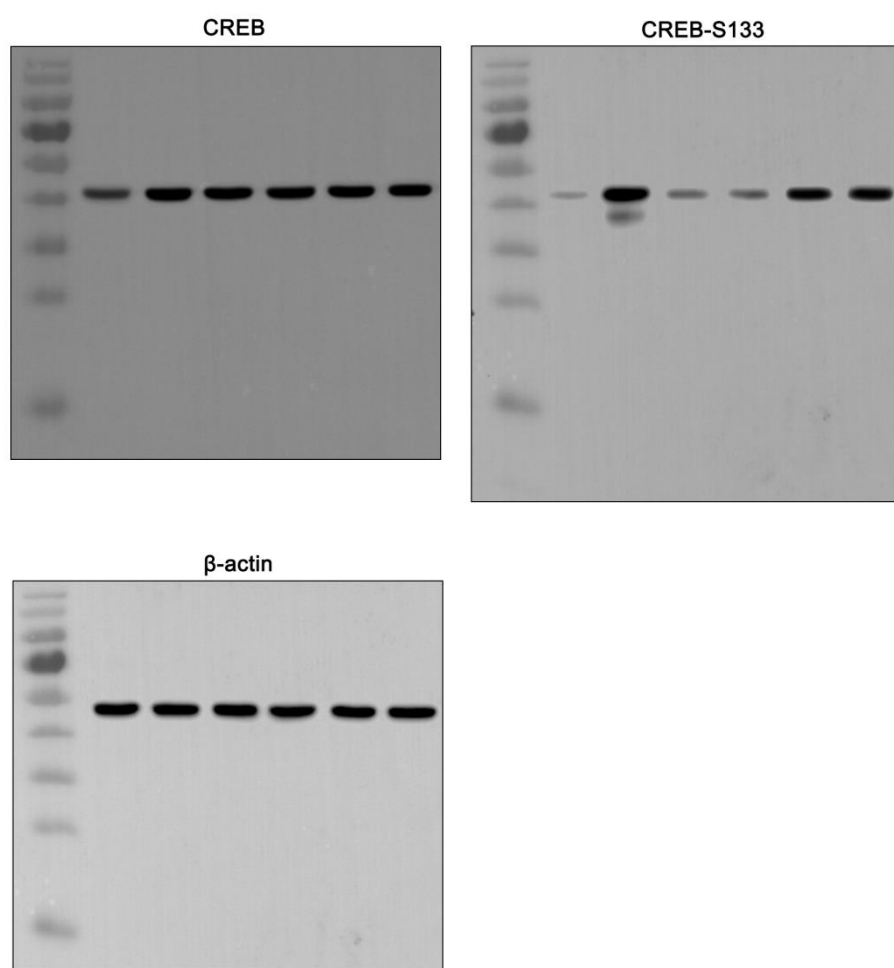
Supplementary Figure 2. Representative full-gel images of Western blots in Figure 3A.



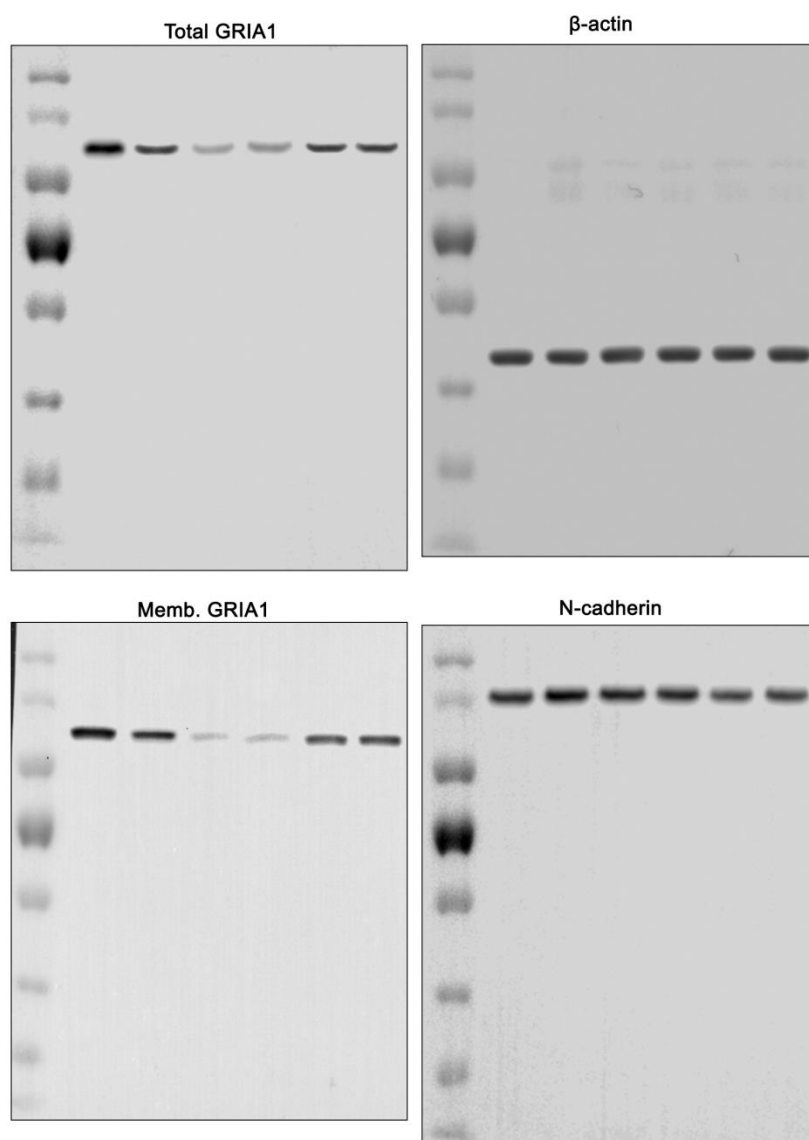
Supplementary Figure 3. Representative full-gel images of Western blots in Figure 4A.



Supplementary Figure 4. Representative full-gel images of Western blots in Figure 5A.



Supplementary Figure 5. Representative full-gel images of Western blots in Figure 6A.



Supplementary Figure 6. Representative full-gel images of Western blots in Figure 7A.