

Supplementary Figures

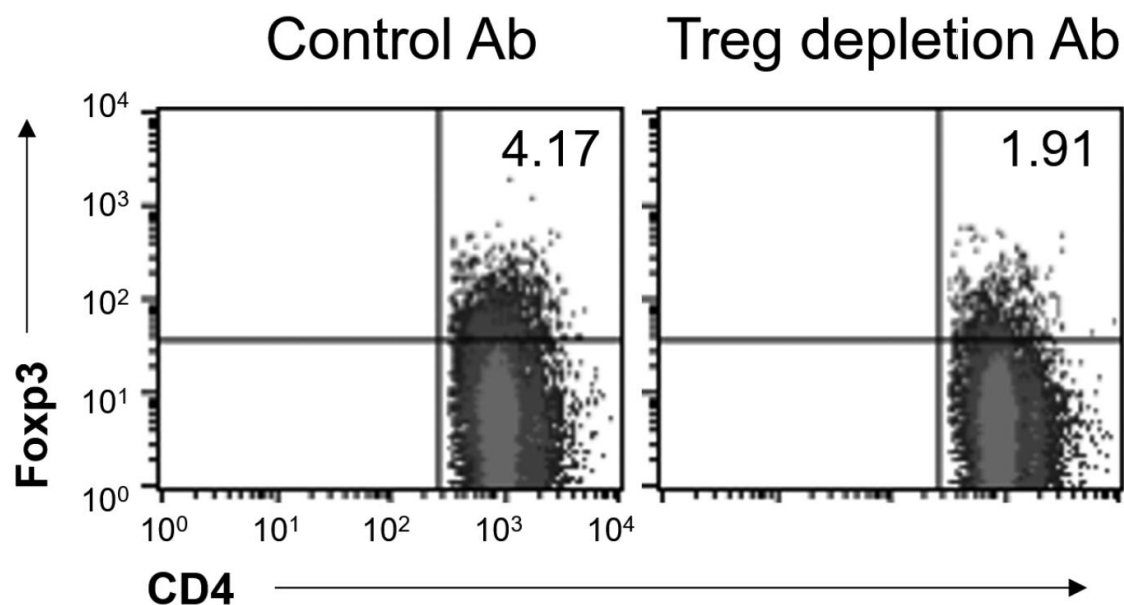


Figure S1. Confirmation of regulatory T (Treg) cell depletion. Treg depletion antibody or isotype control antibody was administrated to collagen-induced arthritis (CIA) mice, and 48h later draining lymph nodes were collected. Treg populations were compared using flow cytometry.

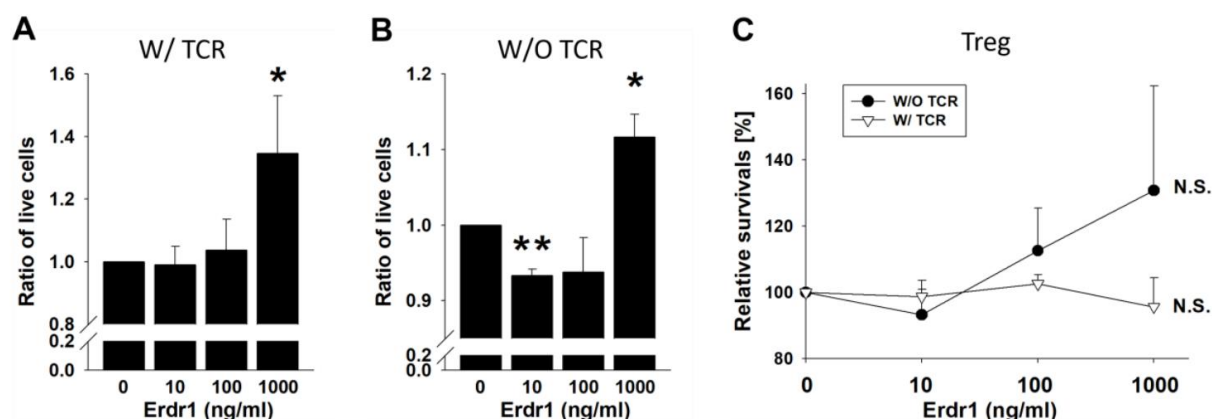


Figure S2. T cell viability. CD4 T cells were treated with various doses of Erythroid differentiation regulator 1 (Erdri) in the presence (A) or absence (B) of T cell receptor (TCR) stimulation for 48 h, and cell viabilities were presented as mean \pm SD from three independent experiments in triplicate ($n = 3$). (C) Relative survivals of Treg cells (gated on CD4⁺ +Foxp3⁺) in the absence or presence of TCR stimulation were expressed as mean \pm SD from three independent experiments in triplicate ($n = 3$). Relative cell viability and survival were evaluated based on the percentages of flow cytometric gate for live lymphocytes. * $p < 0.05$.