

Supplementary Figures

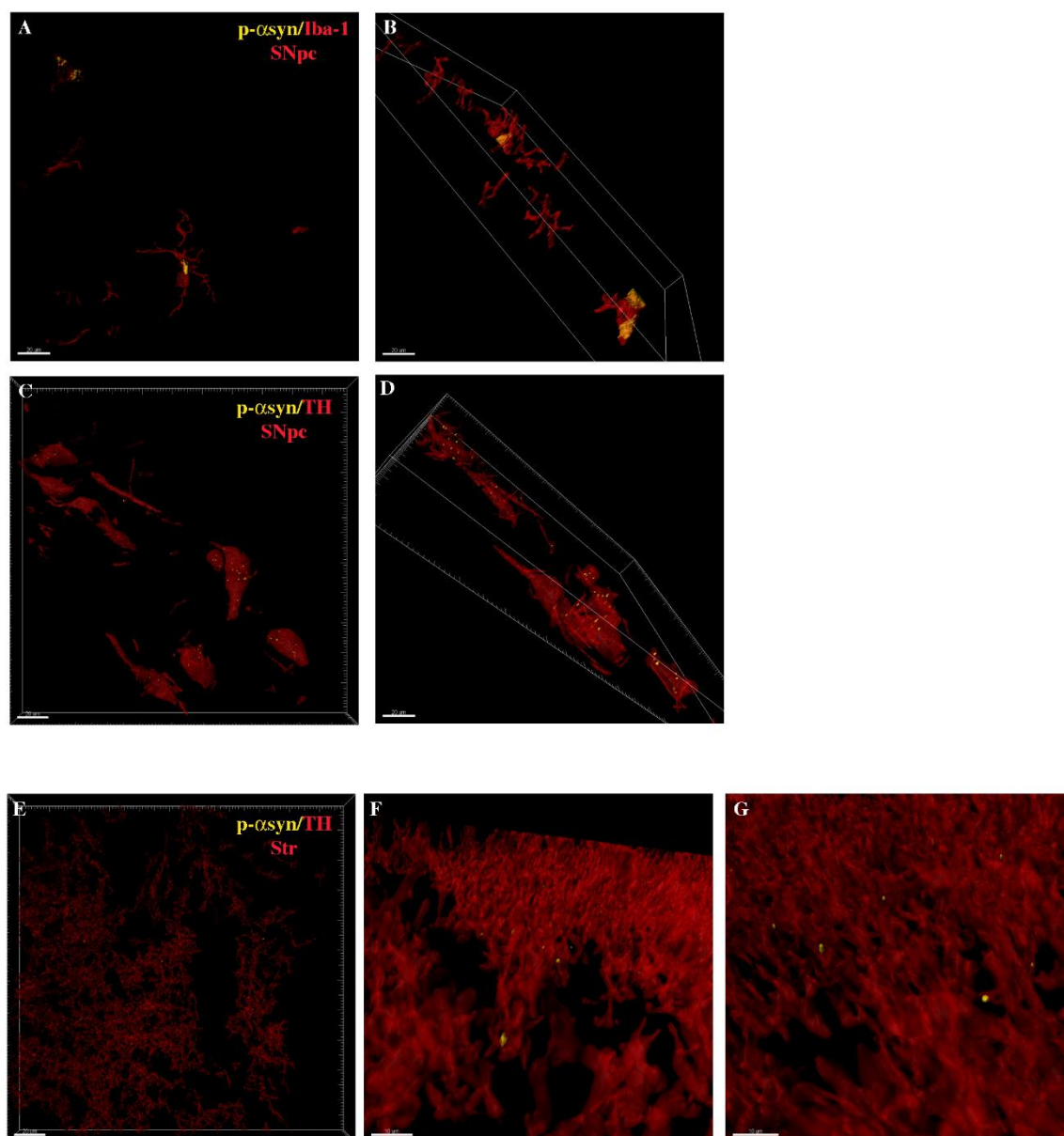


Figure S1. 3D reconstruction of colocalization of p129-αSyn (yellow) with Iba-1 (red, A-B) or TH cell bodies (red, C-D) and fibers (E-G), revealed by surface rendering algorithm in SNpc. To evaluate the p129-αSyn primary and secondary antibodies penetration into the cell, the image stack was rotated of about 45° (B, D) or 9° (F, G) in the Y-axis. All scales are expressed in μm.

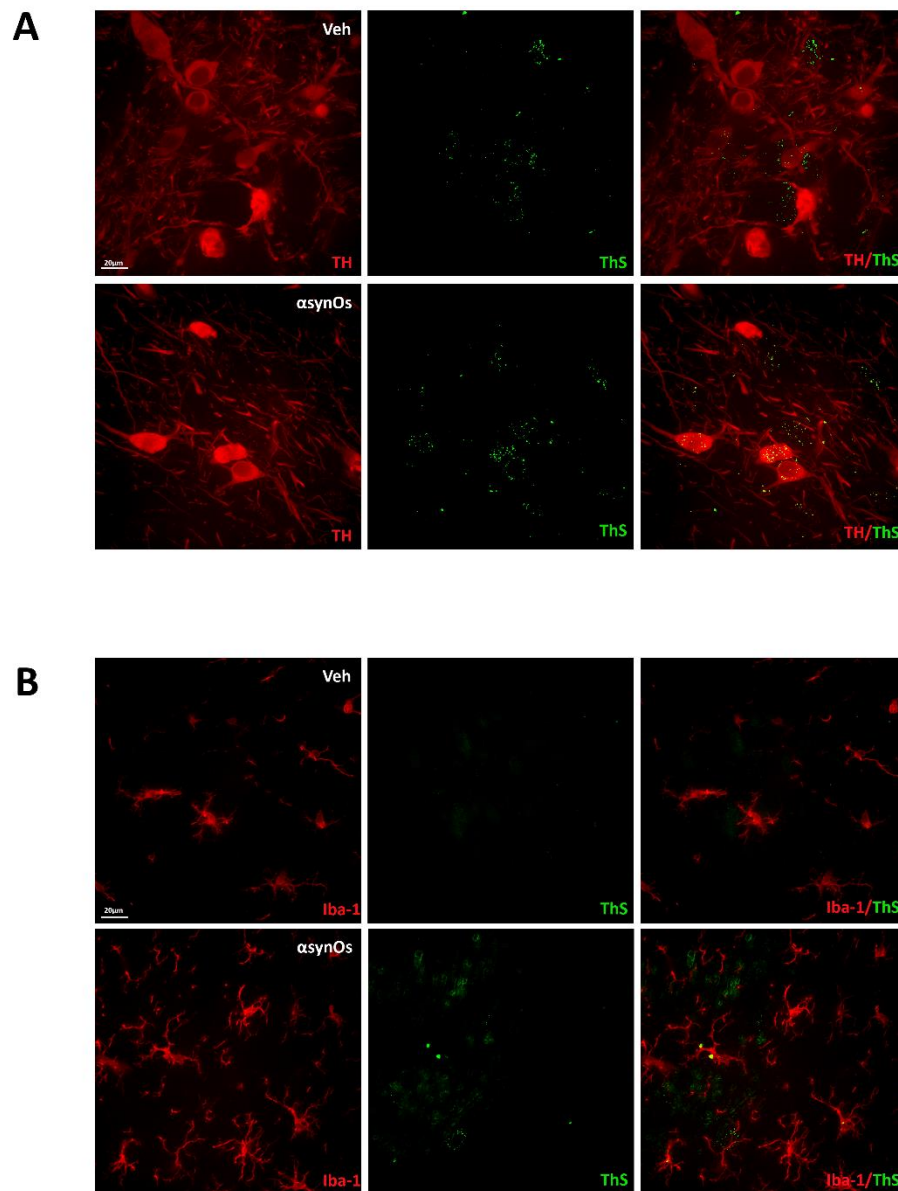


Figure S2. Thioflavin-S signal in TH-positive and Iba-1 positive cells. Representative confocal images from the Substantia Nigra pars compacta (SNpc) of vehicle or H- α SynOs-infused rats. Thioflavin-S aggregates (green) are shown in TH⁺ neurons (red in A panels) and Iba-1 positive cells (red in B panels). Scale bar: 20 μ m.

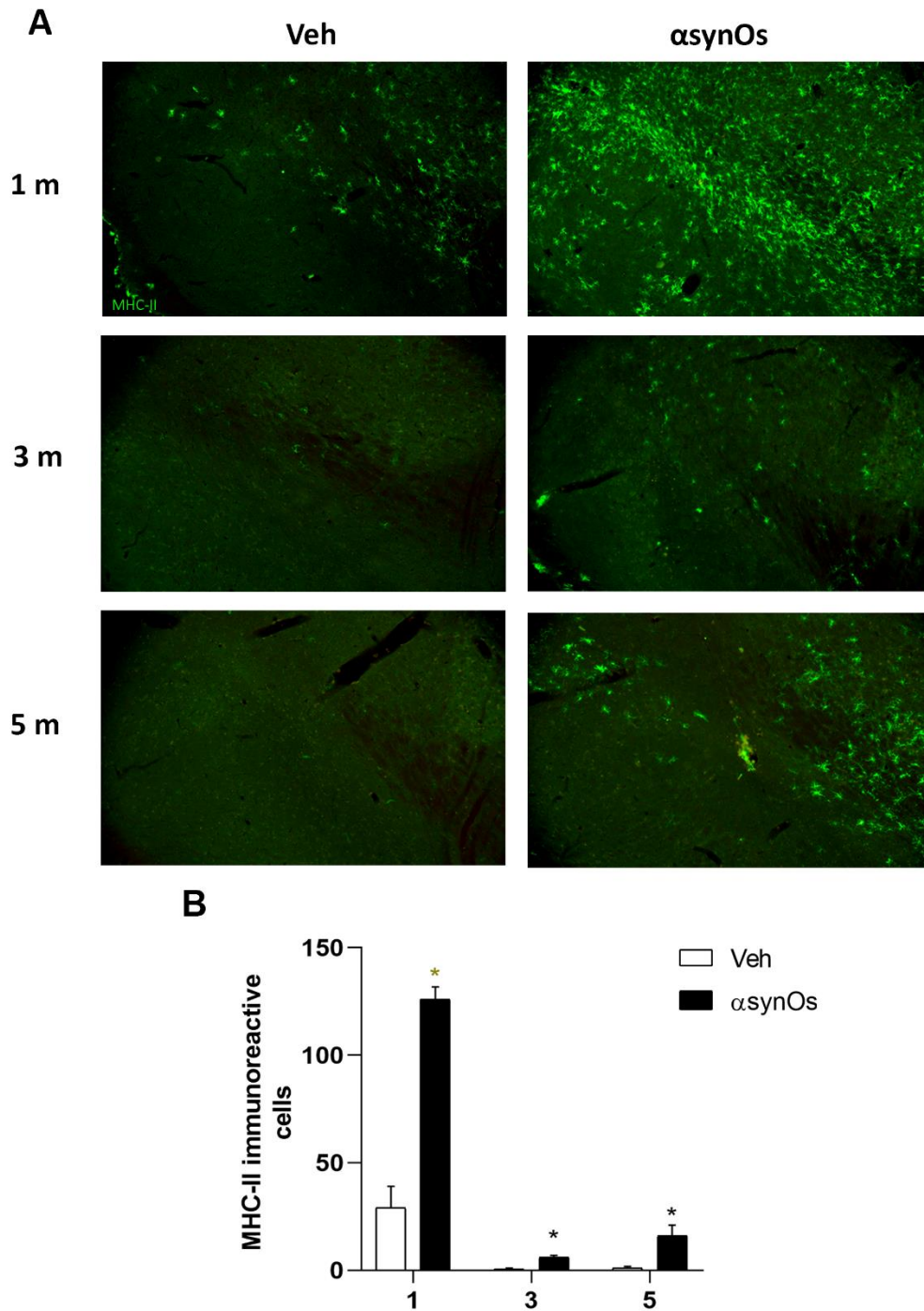


Figure S3. Representative images of MHC-II immunofluorescence (A) and quantification of MHC-II-immunoreactive cells (B) in the SNpc from vehicle or H- α SynO-infused rats (A). Values represent the mean \pm SEM. * $p < 0.01$ vs corresponding vehicle one, three or five months post infusion, by t-test ($n = 4/5$ per group).