

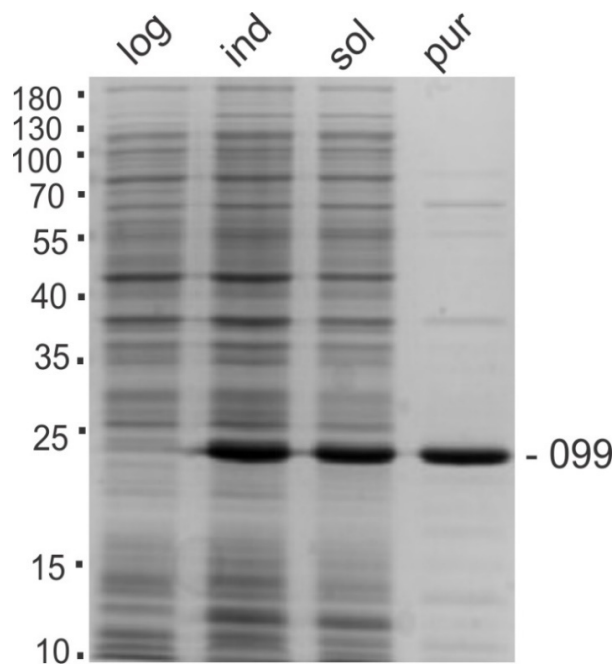
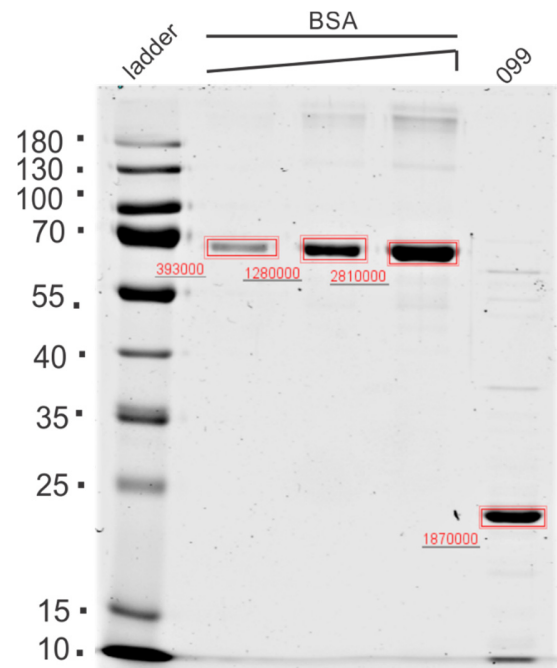
A**B**

Figure S2. Expression, purification, and quantification of TTHB099 protein. **(A)** Shown is a Coomassie Blue G-250 stained 12% SDS-PAGE gel onto which was loaded whole cell extracts or partially purified fractions equivalent to 0.2% of the total preparation. Lanes shown left to right: (log) logarithmic growth bacteria, (ind) bacteria following IPTG-induction for 4 h, (sol) soluble proteins following sonication and centrifugation, (pur) 2.3 μ g purified TTHB099 protein. The location of molecular weight standards are indicated at the left of the figure. **(B)** Quantitative densitometric analysis of a Coomassie Blue G-250 stained 12% SDS-PAGE gel containing a BSA standard curve (left to right: 0.5, 1, 2 mg protein) and 0.5 μ L stock TTHB099. The final concentration of TTHB099 is estimated to be 50.6 μ M.