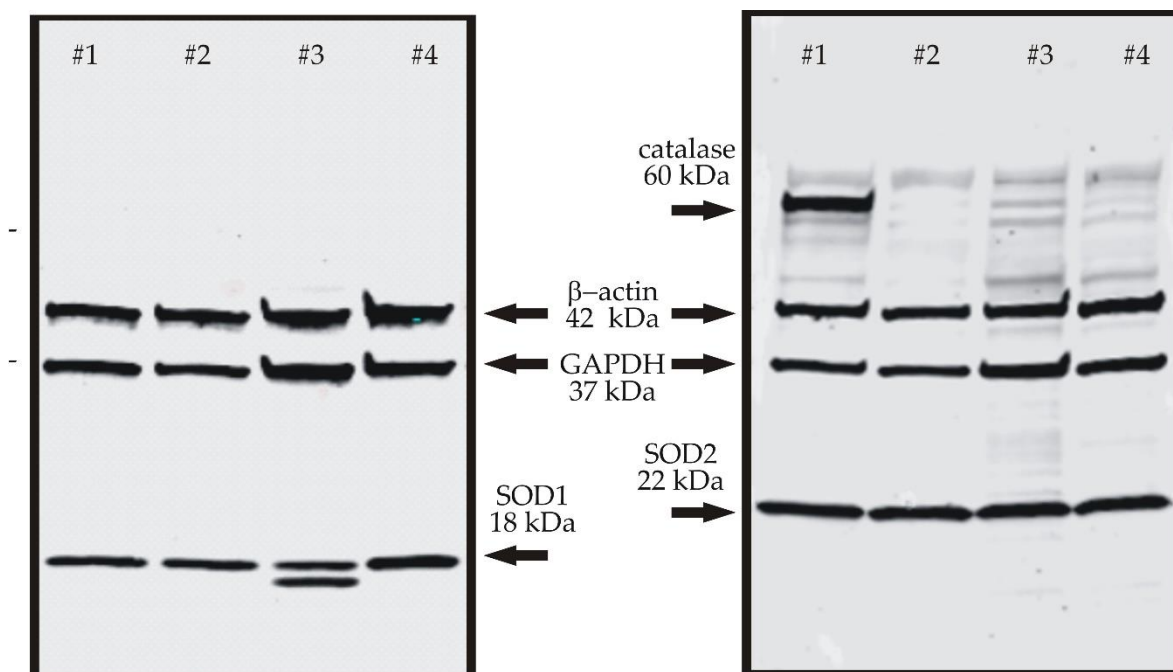


1 Supplementary Figure 3



#1 = control #2 = c.3182 T>C

#3 = c.1836 A>C / c.1628delC #4 = c.1180 T>C

3 Supplementary Figure 3: Examples of Western Blots

Example of a Western Blot analysis to determine the amount of SOD1 (left panel), SOD2 and catalase (right panel). SOD2 and catalase were detected simultaneously on the same gels.



© 2019 by the authors. Submitted for possible open access publication under the terms and conditions of the Creative Commons Attribution (CC BY) license (<http://creativecommons.org/licenses/by/4.0/>).