

Western Blot Images

Figure S1: Western blot of NDUFS1 in spermatozoa of men with testicular cancer compared to fertile men.

Figure S2: Western blot of NDUFS1 in spermatozoa of men with hodgkin's disease compared to fertile men.

Figure S3: Western blot of NDUFS1 in spermatozoa of men with lymphoma compared to fertile men.

Figure S4: Western blot of NDUFS1 in spermatozoa of men with leukemia compared to fertile men.

Figure S5: Western blot of UQCRC2 in spermatozoa of men with testicular cancer compared to fertile men.

Figure S6: Western blot of UQCRC2 in spermatozoa of men with hodgkin's disease compared to fertile men.

Figure S7: Western blot of UQCRC2 in spermatozoa of men with lymphoma compared to fertile men.

Figure S8: Western blot of UQCRC2 in spermatozoa of men with leukemia compared to fertile men.

Figure S9: Western blot of SERPINA5 in spermatozoa of men with testicular cancer compared to fertile men.

Figure S10: Western blot of SERPINA5 in spermatozoa of men with hodgkin's disease compared to fertile men.

Figure S11: Western blot of SERPINA5 in spermatozoa of men with lymphoma compared to fertile men.

Figure S12: Western blot of SERPINA5 in spermatozoa of men with leukemia compared to fertile men.

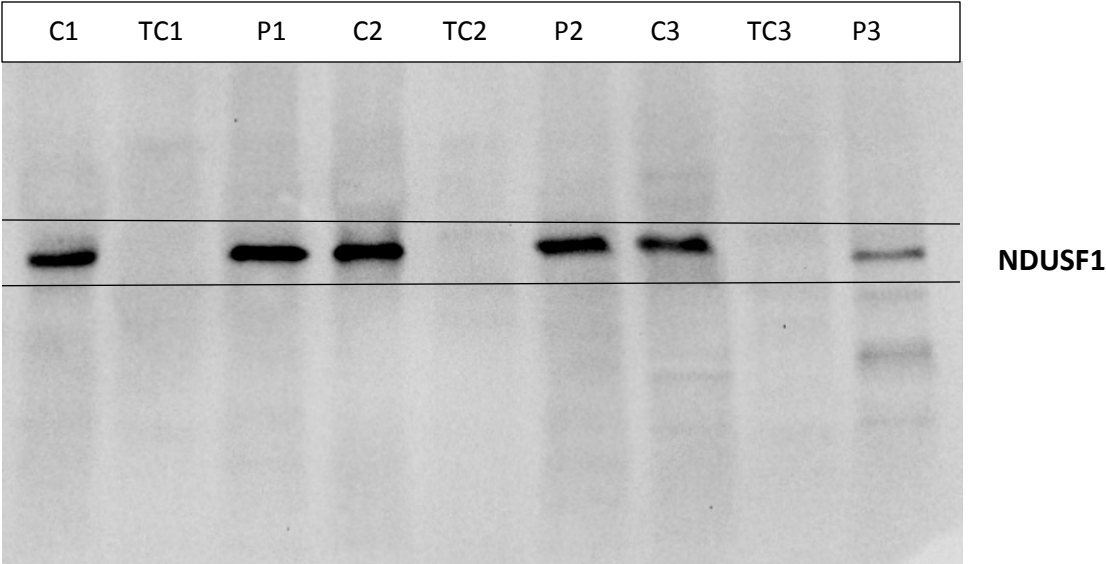
Figure S13: Western blot of SOD1 in spermatozoa of men with testicular cancer compared to fertile men.

Figure S14: Western blot of SOD1 in spermatozoa of men with hodgkin's disease compared to fertile men.

Figure S15: Western blot of SOD1 in spermatozoa of men with lymphoma compared to fertile men.

Figure S16: Western blot of SOD1 in spermatozoa of men with leukemia compared to fertile men.

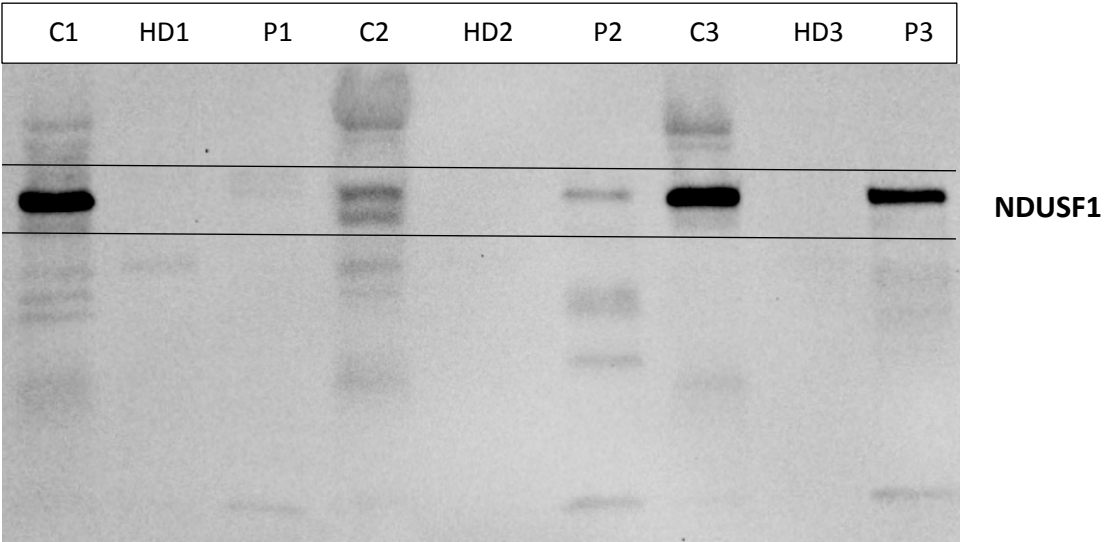
Figure S1:



C: control group with fertile men, TC: testicular cancer, P: infertile men

Note: Expression profile of proteins from control group and testicular cancer group were only used for comparison in the current study.

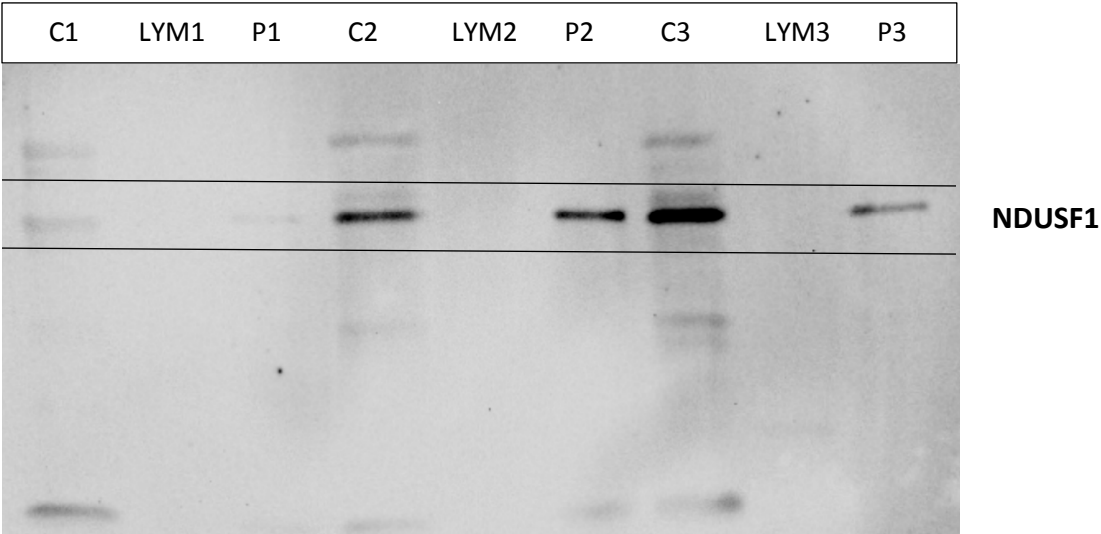
Figure S2:



C: control group with fertile men, HD: hodgkin's disease, P: infertile men

Note: Expression profile of proteins from control group and hodgkin's disease group were only used for comparison in the current study.

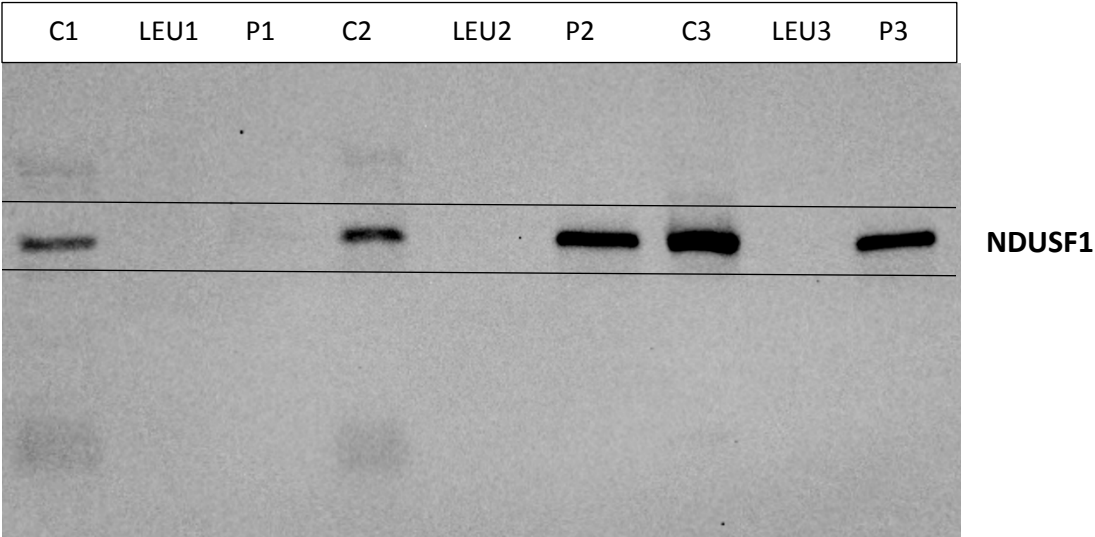
Figure S3:



C: control group with fertile men, LYM: lymphoma, P: infertile men

Note: Expression profile of proteins from control group and lymphoma group were only used for comparison in the current study.

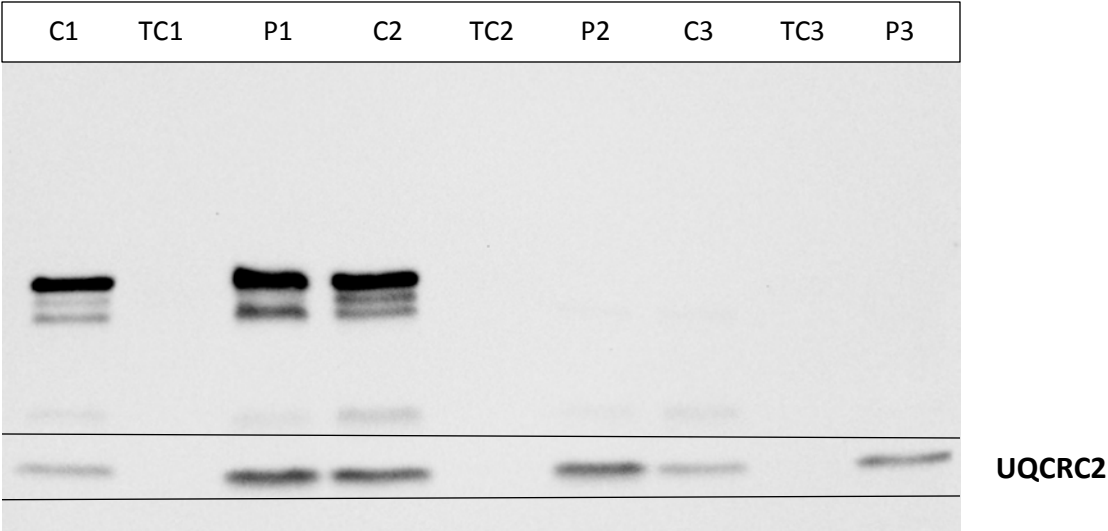
Figure S4:



C: control group with fertile men, LEU: leukemia, P: infertile men

Note: Expression profile of proteins from control group and leukemia group were only used for comparison in the current study.

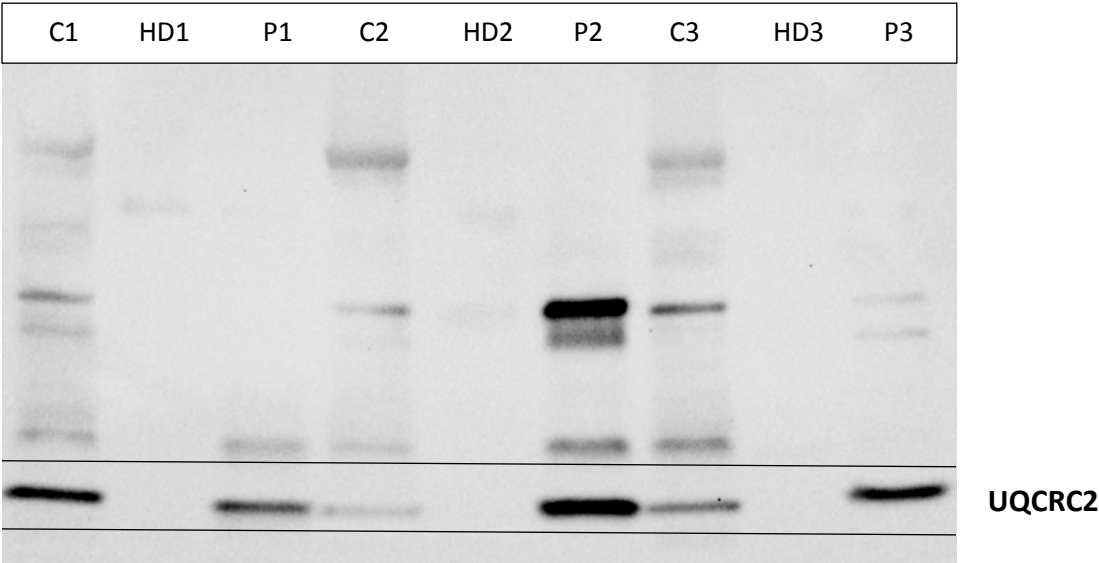
Figure S5:



C: control group with fertile men, TC: testicular cancer, P: infertile men

Note: Expression profile of proteins from control group and testicular cancer group were only used for comparison in the current study.

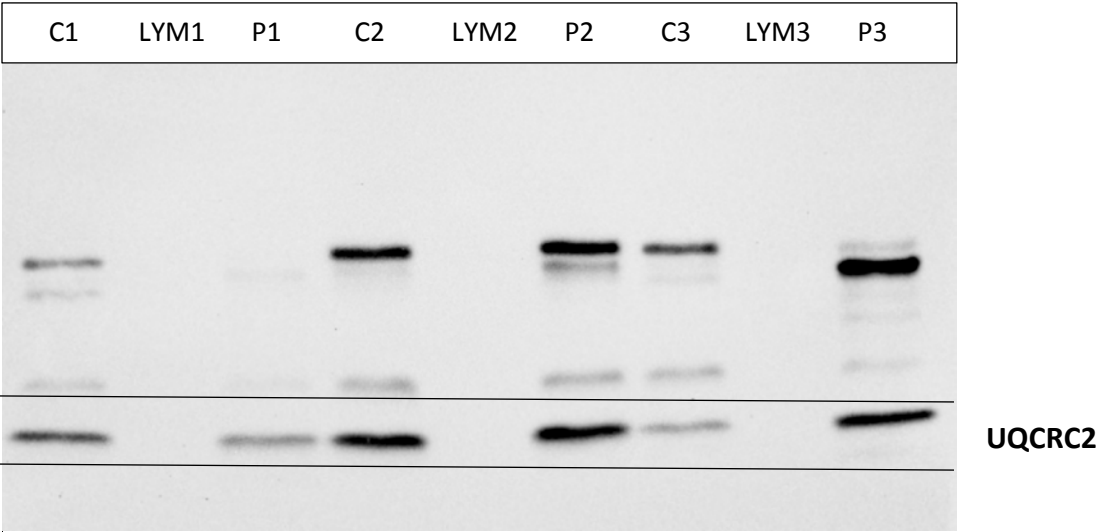
Figure S6:



C: control group with fertile men, HD: hodgkin's disease, P: infertile men

Note: Expression profile of proteins from control group and hodgkin's disease group were only used for comparison in the current study.

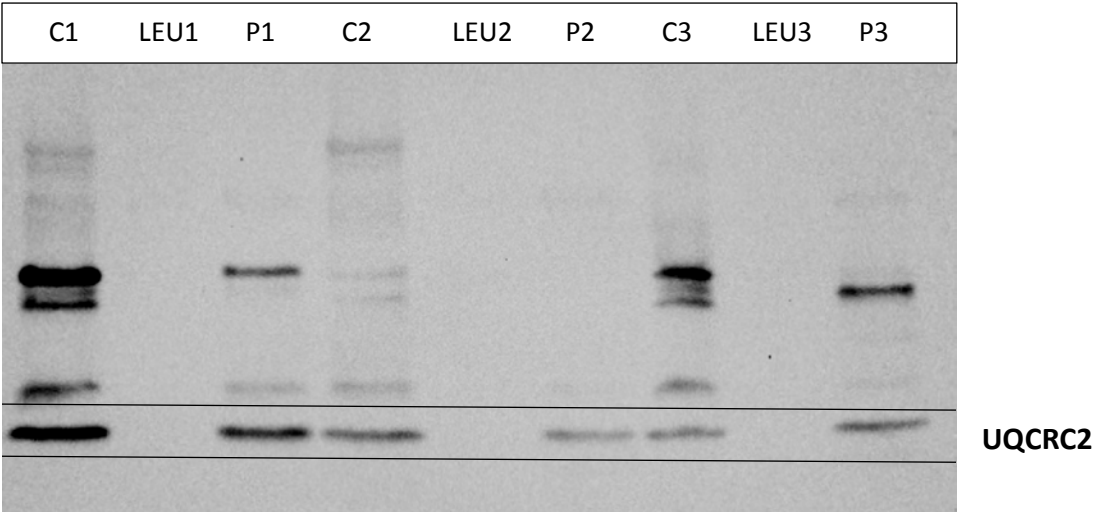
Figure S7:



C: control group with fertile men, LYM: lymphoma, P: infertile men

Note: Expression profile of proteins from control group and lymphoma group were only used for comparison in the current study.

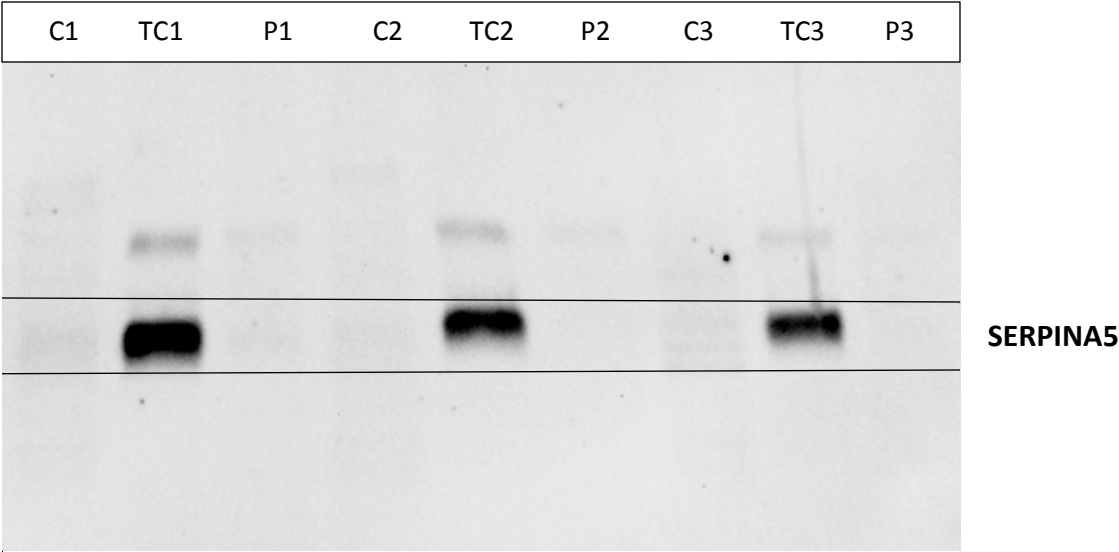
Figure S8:



C: control group with fertile men, LEU: leukemia, P: infertile men

Note: Expression profile of proteins from control group and leukemia group were only used for comparison in the current study.

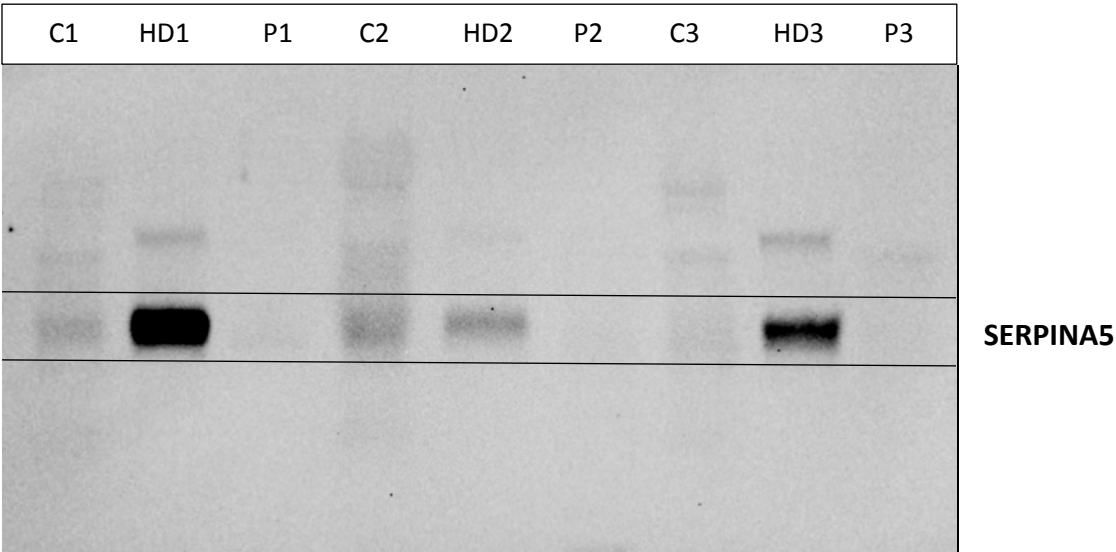
Figure S9:



C: control group with fertile men, TC: testicular cancer, P: infertile men

Note: Expression profile of proteins from control group and testicular cancer group were only used for comparison in the current study.

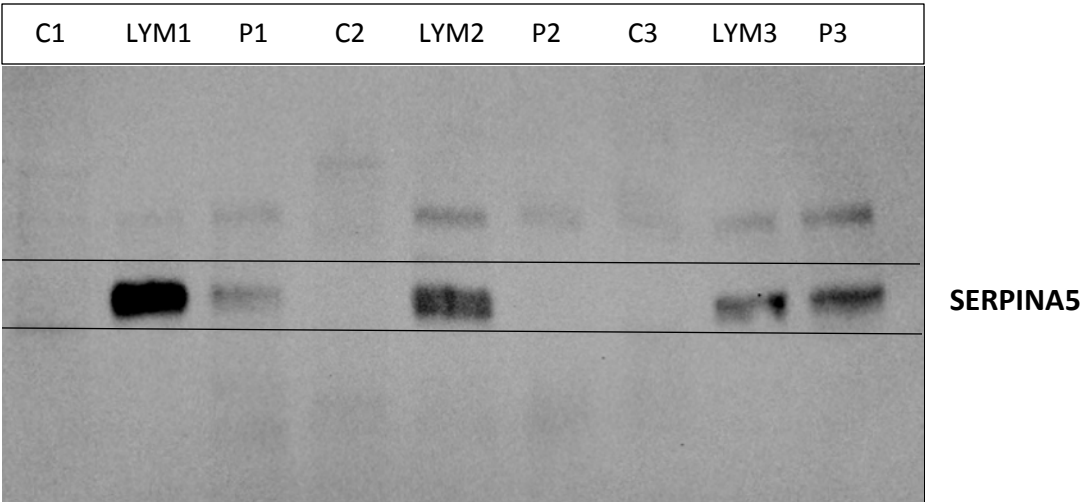
Figure S10:



C: control group with fertile men, HD: hodgekin's disease, P: infertile men

Note: Expression profile of proteins from control group and hodgekin's disease group were only used for comparison in the current study.

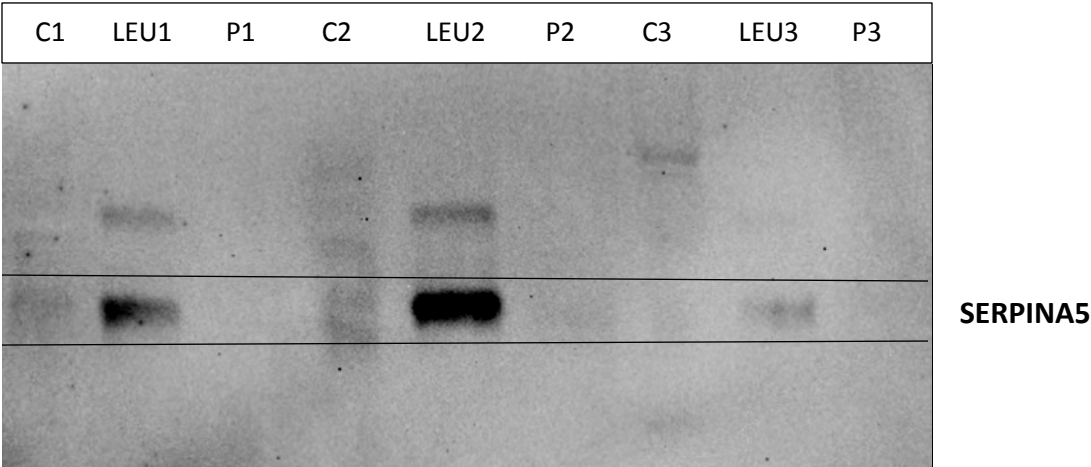
Figure S11:



C: control group with fertile men, LYM: lymphoma, P: infertile men

Note: Expression profile of proteins from control group and lymphoma group were only used for comparison in the current study.

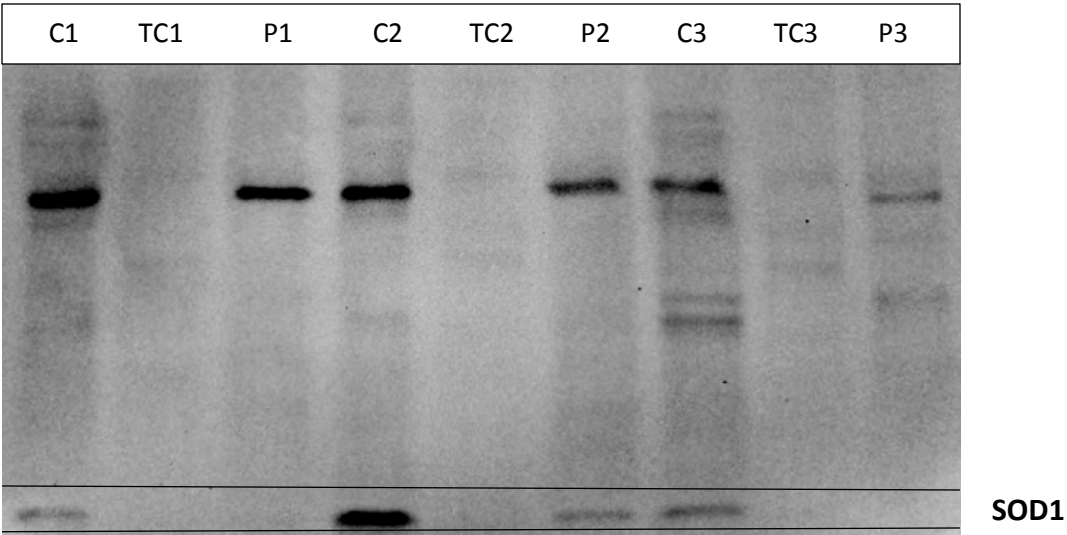
Figure S12:



C: control group with fertile men, LEU: leukemia, P: infertile men

Note: Expression profile of proteins from control group and leukemia group were only used for comparison in the current study.

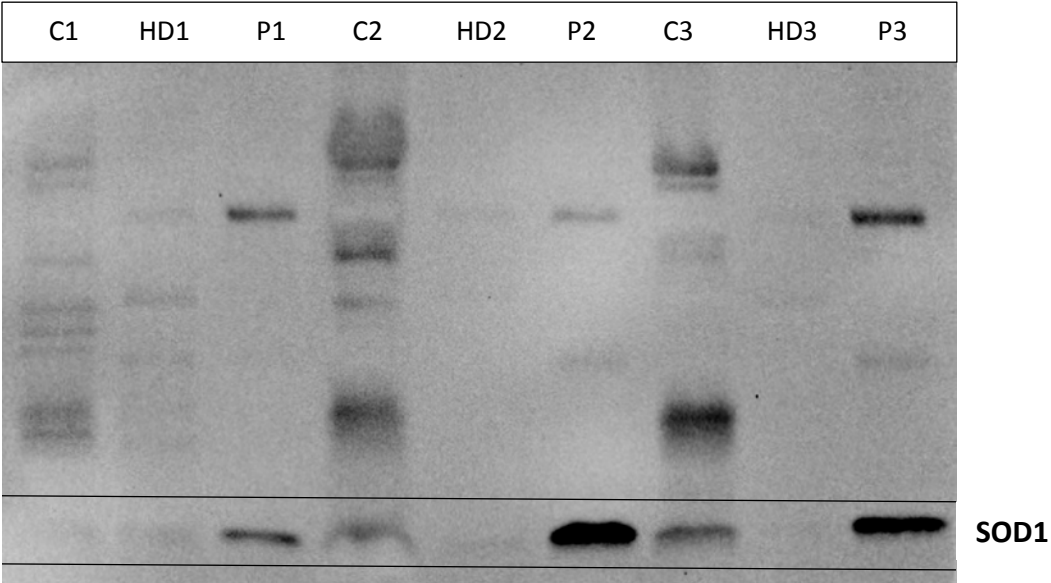
Figure S13:



C: control group with fertile men, TC: testicular cancer, P: infertile men

Note: Expression profile of proteins from control group and testicular cancer group were only used for comparison in the current study.

Figure S14:



C: control group with fertile men, HD: hodgkin's disease, P: infertile men

Note: Expression profile of proteins from control group and hodgkin's disease group were only used for comparison in the current study.

C1	LYM1	P1	C2	LYM2	P2	C3	LYM3	P3	
									SOD1

Note: Expression profile of proteins from control group and lymphoma group were only used for comparison in the current study.

C1	LEU1	P1	C2	LEU2	P2	C3	LEU3	P3

Note: Expression profile of proteins from control group and leukemia group were only used for comparison in the current study.