

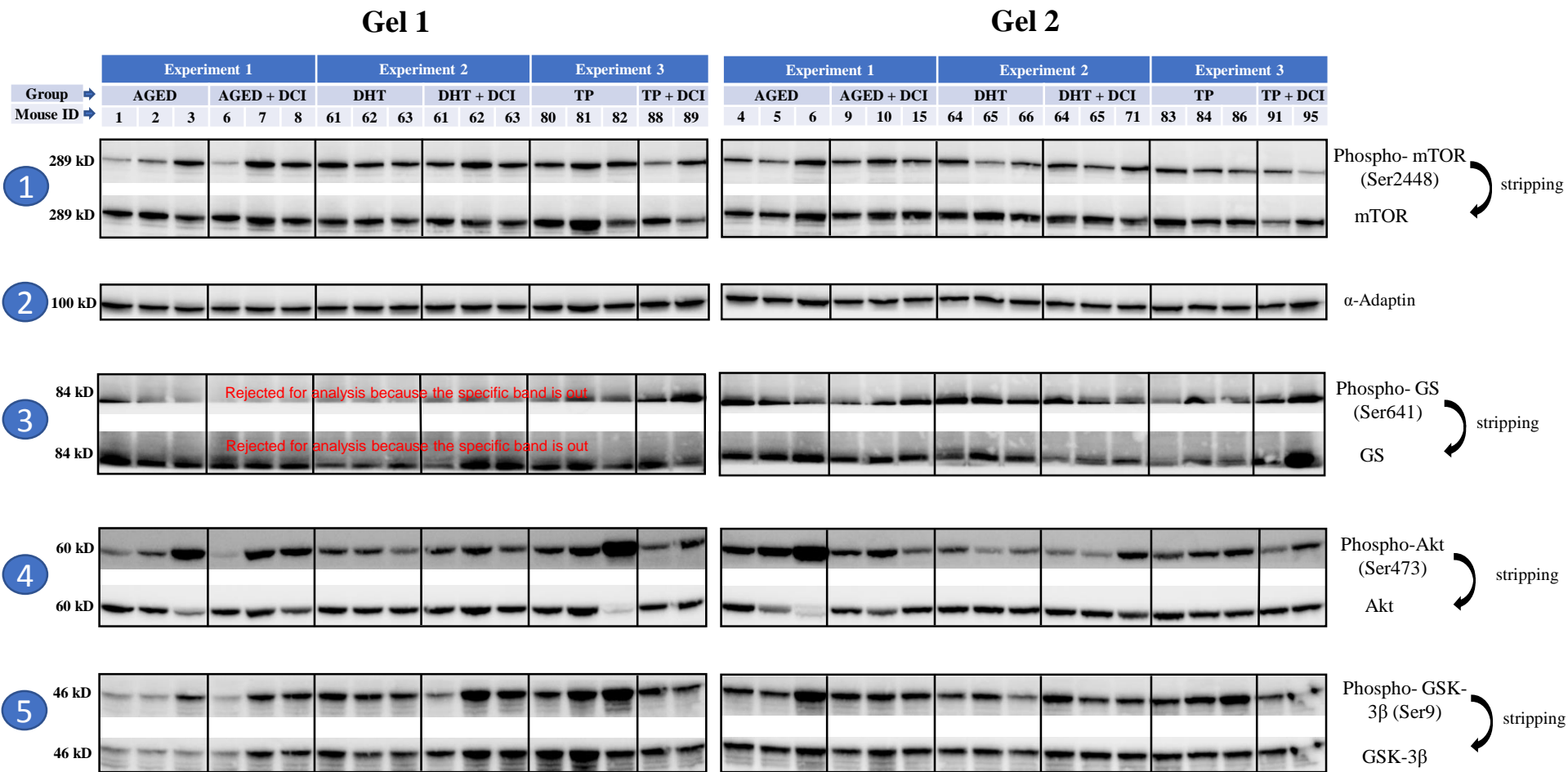
Supplementary figure (unedited blots) corresponding to
results represented graphically in the Figure 5

Definition of Experiment, groups and samples ID:

Experiment 1		Experiment 2		Experiment 3	
AGED	AGED + DCI	DHT	DHT + DCI	TP	TP + DCI
1	6	61	61	80	88
2	7	62	62	81	89
3	8	63	63	82	90
4	9	64	64	83	91
5	10	65	65	84	95
6	15	66	71	86	96
7	16	67	72	87	97
8	17	68	73	88	98
9	19	69	74	89	99
10	20	70	76	90	100

*Numbers correspond to female mouse ID from each group

Whole individual membranes for mTOR (1), α -Adaptin (2), GS (3), Akt (4), GSK-3 β (5) and immunodetections. A total of 4 gels were used to run 10 samples per group: Experiment 1 (groups: AGED and AGED + DCI), Experiment 2 (groups: DHT and DHT + DCI), Experiment 3 (groups: TP and TP + DCI). The whole blotted membrane from each gel was cut according to the molecular weight of the protein of interest and immunodetection was applied separately for each protein. The expression of α -Adaptin was analyzed as a loading control per lane. Densitometry quantification of the bands with their means and SEM were represented in histogram charts shown in Figure 5.



Gel 3

Gel 4

