

Supplementary Information

Table S1. The half maximal inhibitory concentration (IC₅₀) and 50% hemolysis (HC₅₀) of BJA-95 on normal cells compared with KKU-213 cell.

Cell type	Cell lines	IC ₅₀ (μg/ml)
Cholangiocarcinoma cell	KKU-213	7.1±1.3
Normal cholangiocyte	MMNK-1	10.5±1.6*
Human breast epithelial cell	MCF-10A	16.1±1.4**
Fibroblast cell	3T3-L1	11.6±1.1*
Blood cell	Peripheral blood mononuclear cells (PBMCs)	13.8±1.7**
		HC ₅₀ (mg/ml)
Blood cell	Red blood cells (RBCs)	0.5±0.1****

Notes: Results are shown as mean ± SD from repeated three independent experiments for KKU-213 and MMNK-1 cell lines. The IC₅₀ and HC₅₀ on MCF-10A, 3T3-L1, PBMCs and RBCs were referred from our previous study ¹⁹. (*) $p < 0.05$, (**) $p < 0.01$, (***) $p < 0.001$, (****) $p < 0.0001$ significantly higher than the value of KKU-213 cells.

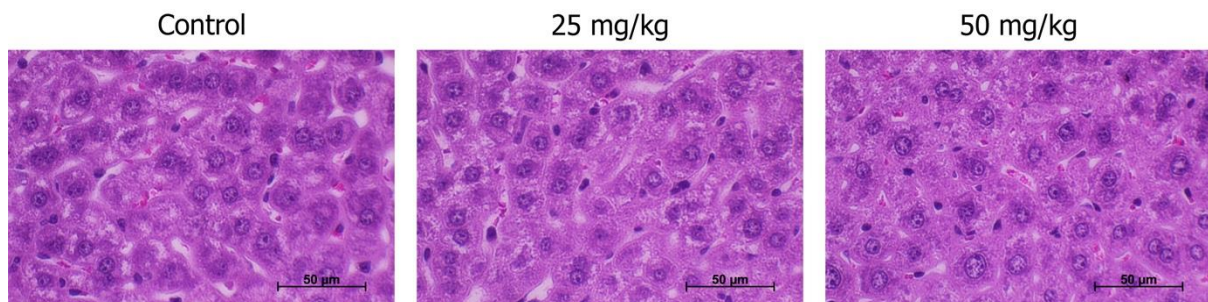


Figure S1. Representative photos of hematoxylin and eosin (H&E) staining of liver tissues. The BJA-95 treatment showed no discernible toxicity on mice liver cells.