

Supplementary Informations

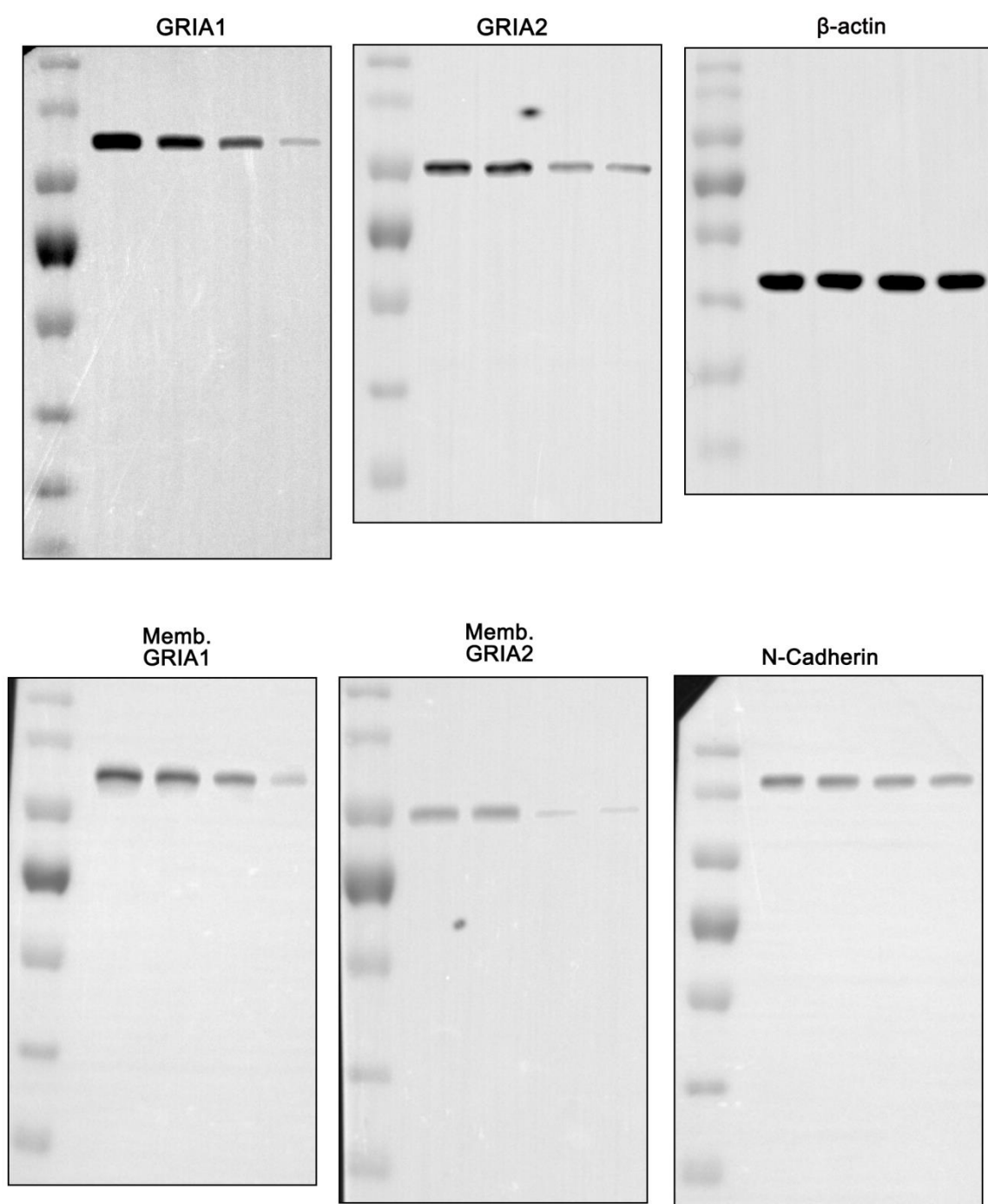
PTEN is required for the anti-epileptic effects of AMPA receptor antagonists in chronic epileptic rats

Ji-Eun Kim^{1,2}, Hana Park^{1,2}, Ji-Eun Lee^{1,2}, Tae-Hyun Kim^{1,2}, Tae-Cheon Kang^{1,2*}

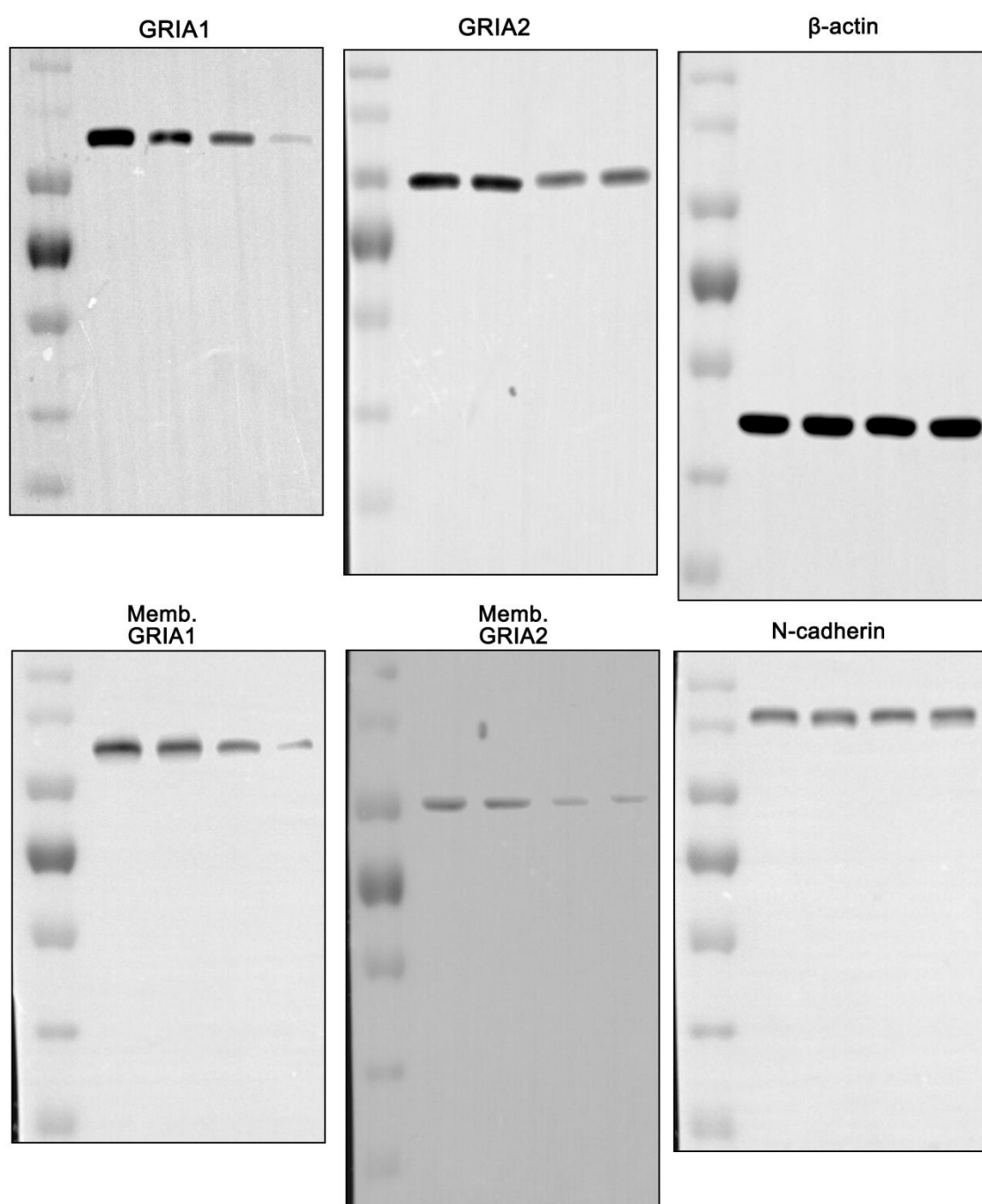
¹Department of Anatomy and Neurobiology, College of Medicine, Hallym University,
Chuncheon 24252, South Korea

²Institute of Epilepsy Research, College of Medicine, Hallym University, Chuncheon 24252, South Korea

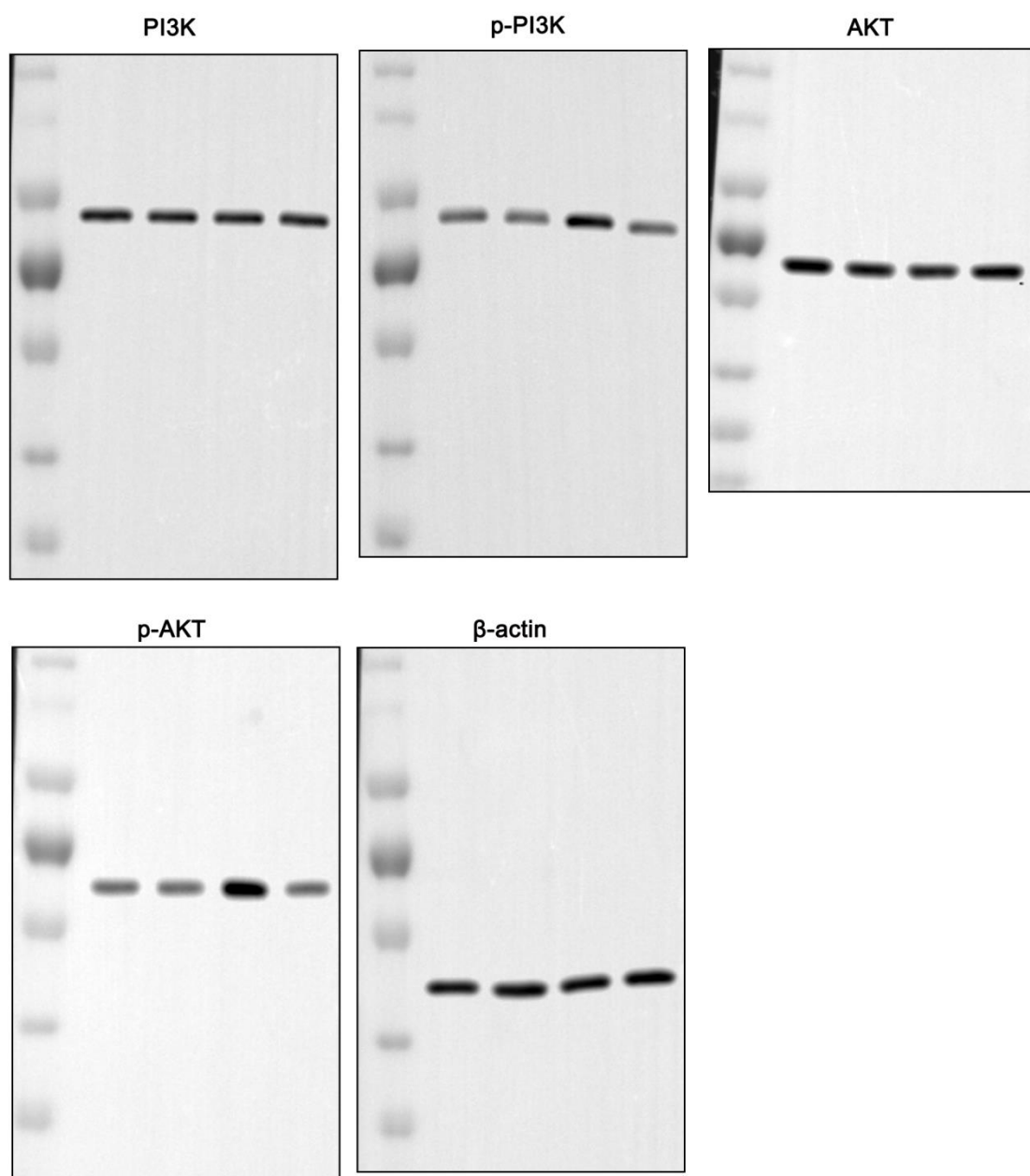
*Correspondence to: T. -C. Kang, Department of Anatomy and Neurobiology, College of Medicine, Hallym University, Chuncheon, Kangwon-Do 24252, South Korea; Tel: +82-33-248-2524; Fax: +82-33-248-2525; E-mail: tckang@hallym.ac.kr



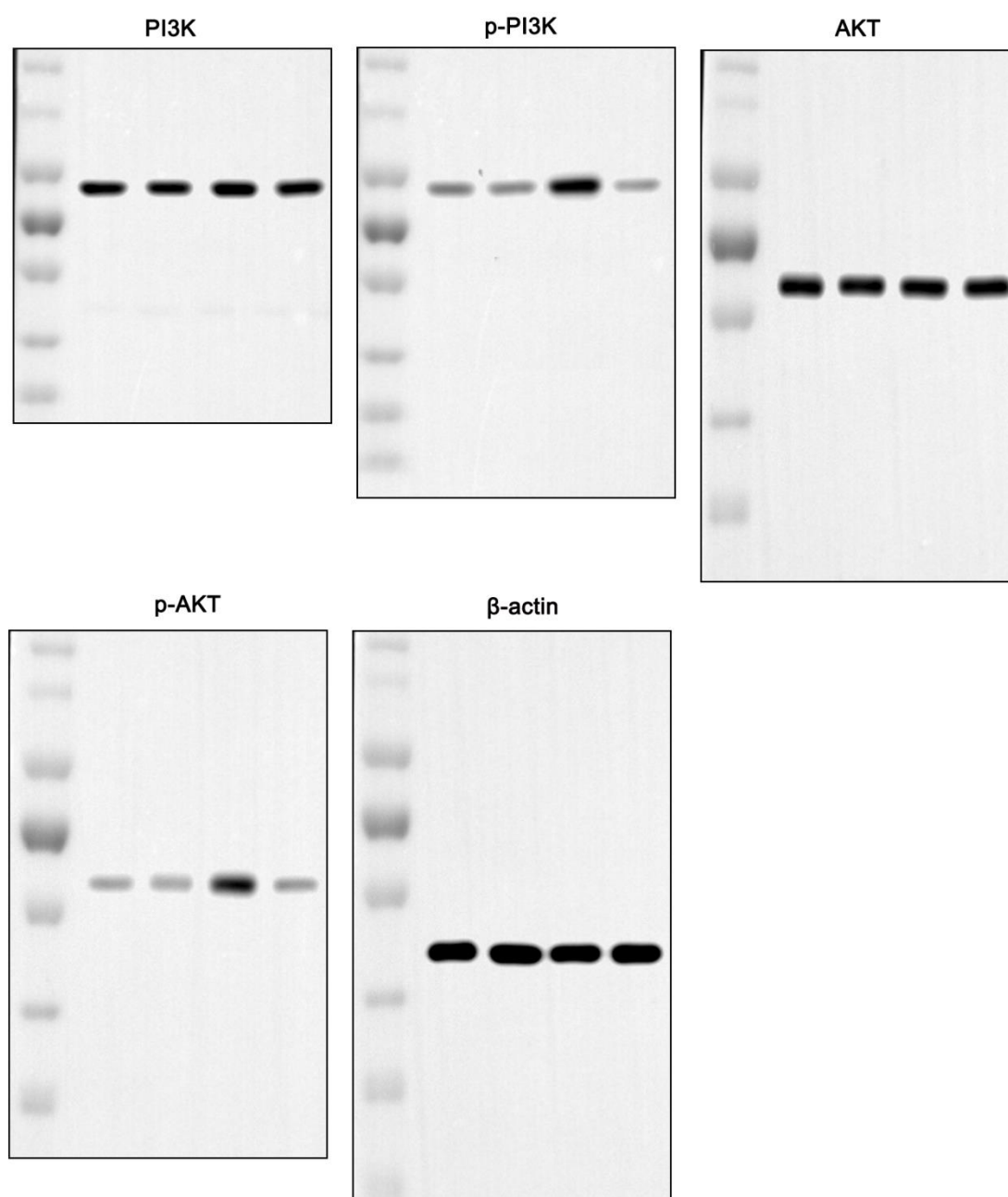
Supplementary Figure 1. The whole gel images of Western blot in Figure 1.



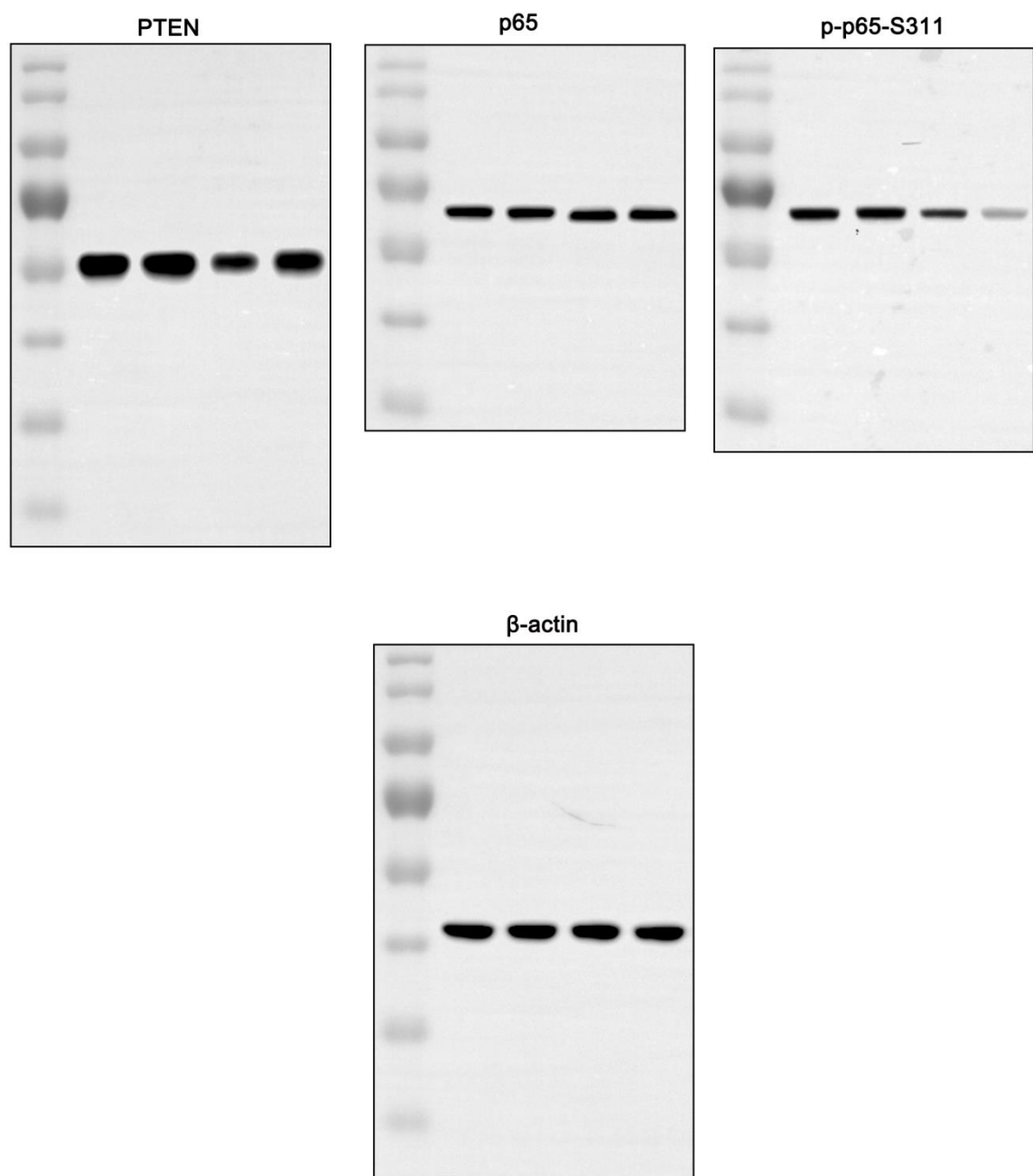
Supplementary Figure 2. The whole gel images of Western blot in Figure 2.



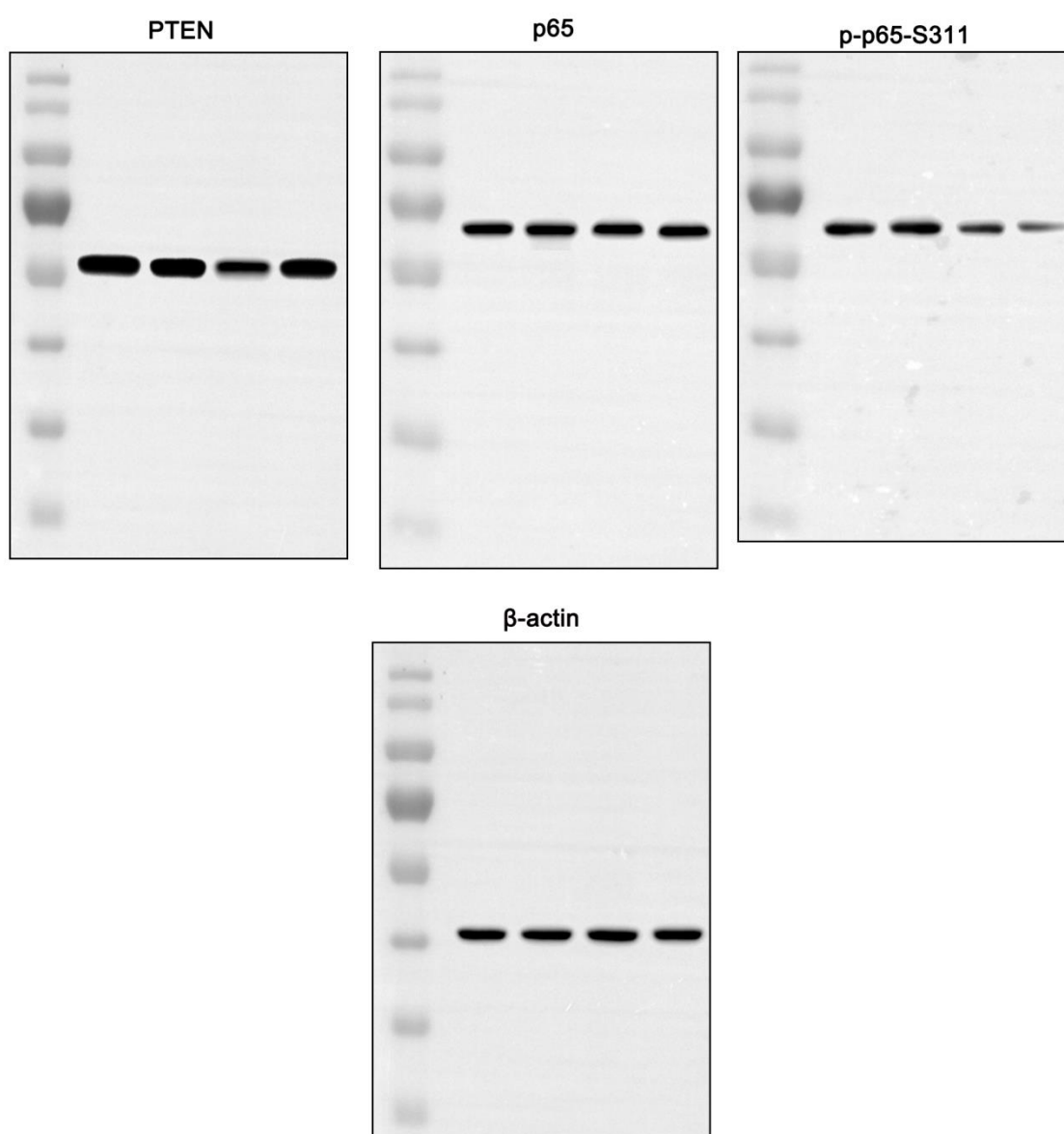
Supplementary Figure 3. The whole gel images of Western blot in Figure 3.



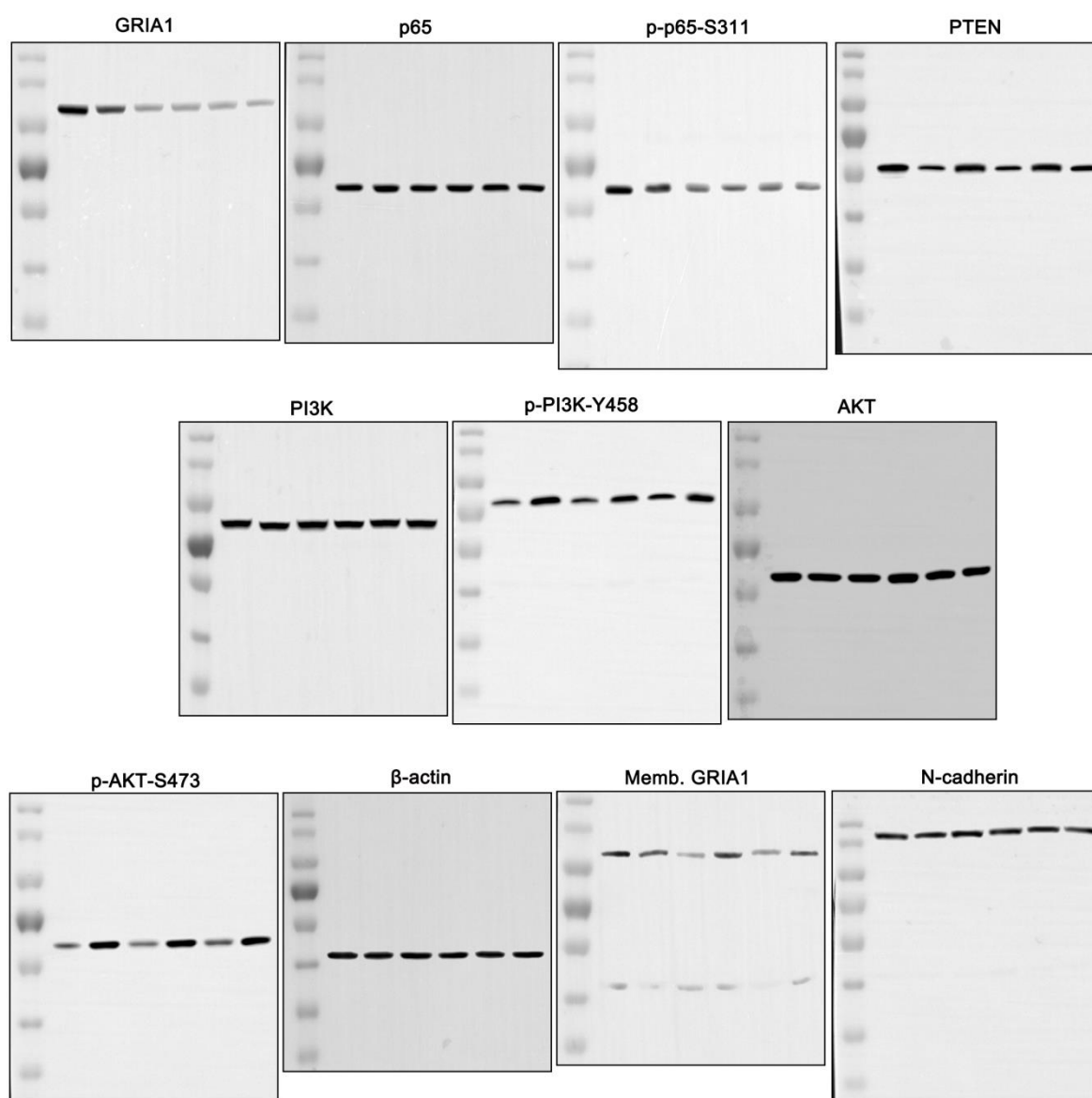
Supplementary Figure 4. The whole gel images of Western blot in Figure 4.



Supplementary Figure 5. The whole gel images of Western blot in Figure 5.



Supplementary Figure 6. The whole gel images of Western blot in Figure 6.



Supplementary Figure 7. The whole gel images of Western blot in Figure 7.