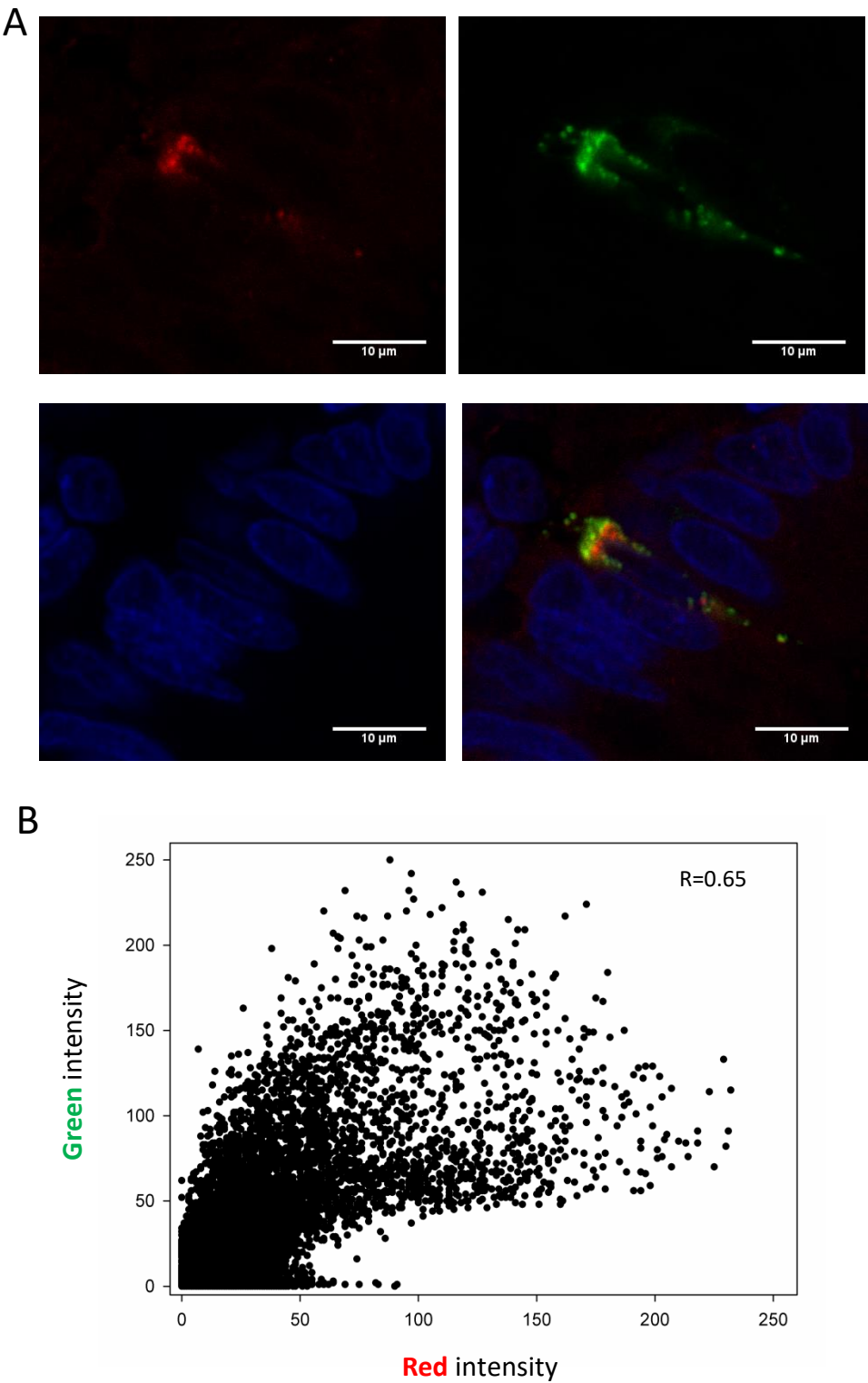


Suppl. Figure S2



Suppl. Figure S2. Double immunofluorescence staining analyzed by confocal laser scanning microscopy. (A) Localization of UPF3A (Alexa Fluor 598; red fluorescence) and CHGA (Alexa Fluor 488, green fluorescence) in normal colon crypts. Cell nuclei were counterstained with DAPI. Overlay of the fluorescence signals confirms colocalization of both proteins (yellow and orange) in colon crypts. **(B)** Colocalization analysis of UPF3A (red) and CHGA (green).