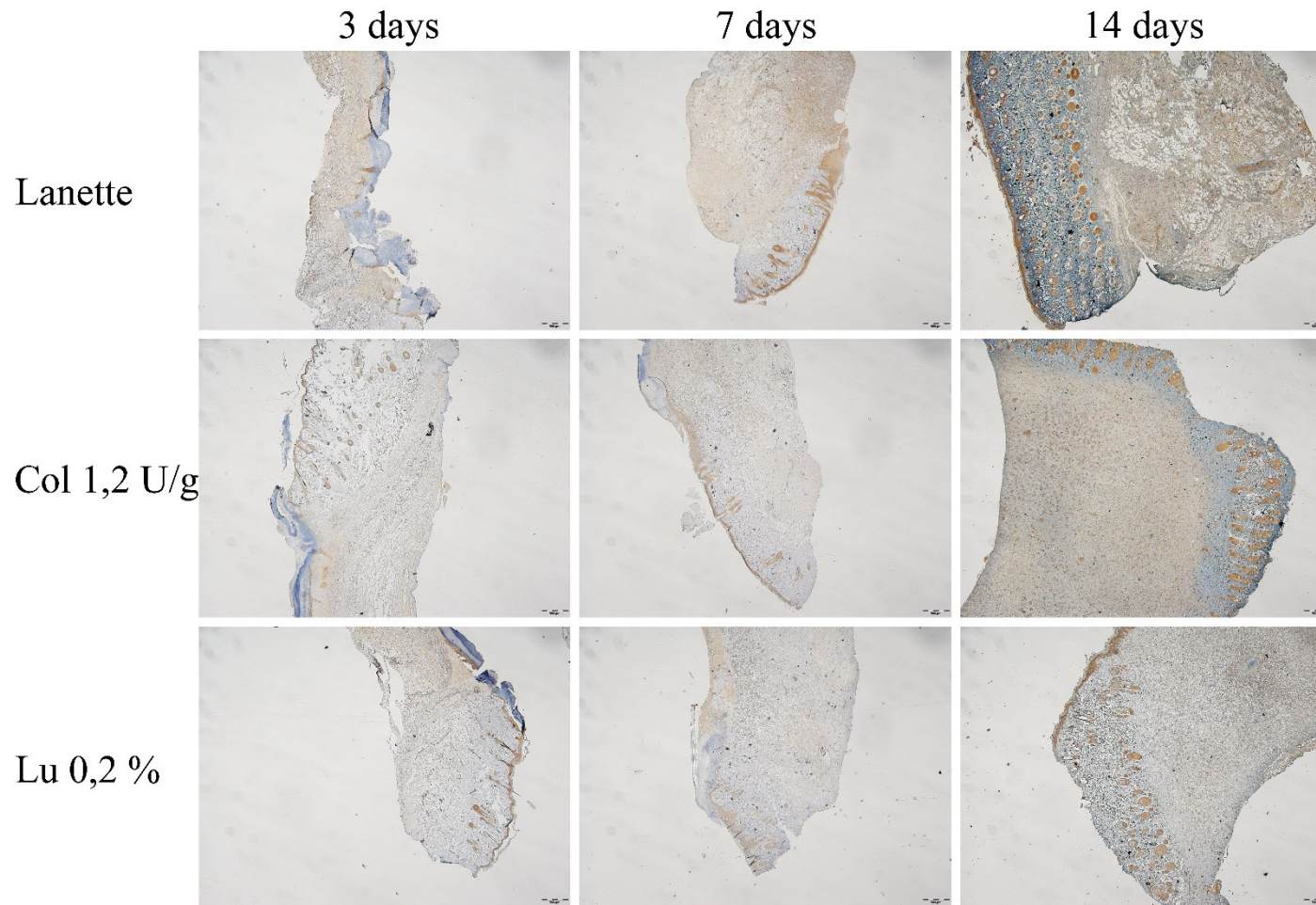


**Supplementary Materials** - Photomicrography of the NF $\kappa$ B, Ki-67, VEGF and EGF immunostaining in the border and lesion center of rats topically treated with lanette, collagenase 1.2 U/g or lupeol 0.2% creams



**Supplementary Fig. S1:** Photomicrography of the NF $\kappa$ B immunostaining in skin tissue sections on day 3, 7 and 14 post wound induction in low magnification. Bar represents 500 $\mu$ m.

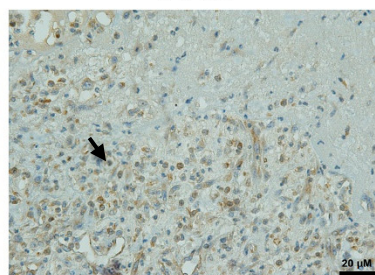
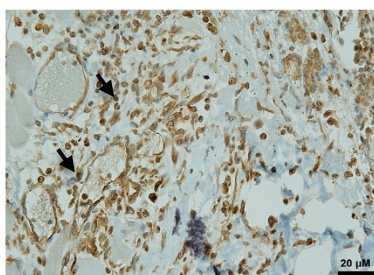
**A**

**3 days**

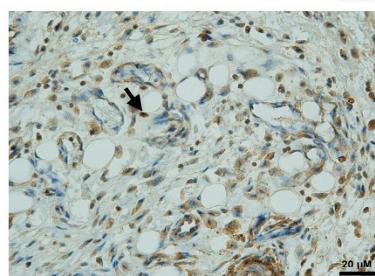
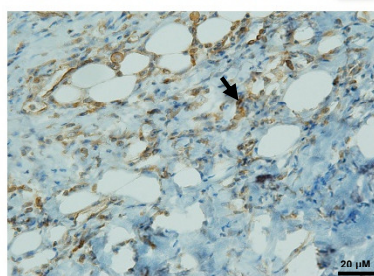
**Border**

**Center**

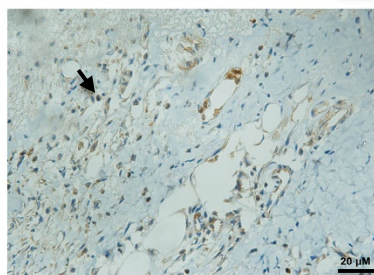
**Lanette**



**Col 1.2 U/g**



**Lu 0.2 %**





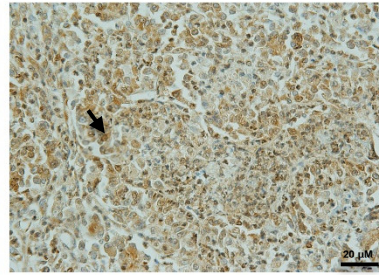
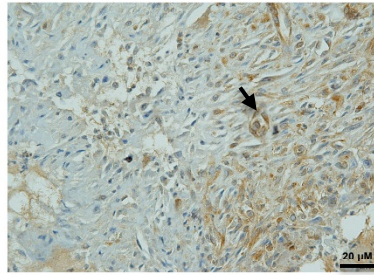
**B**

7 days

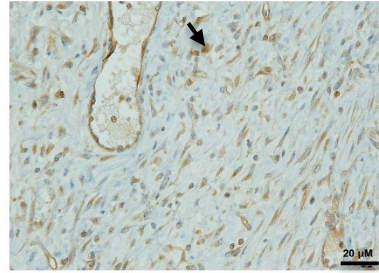
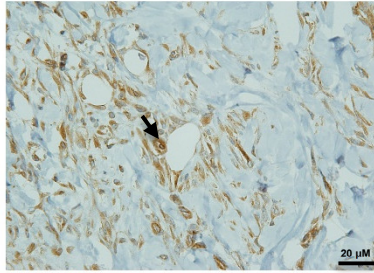
Border

Center

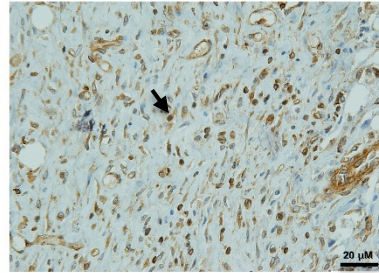
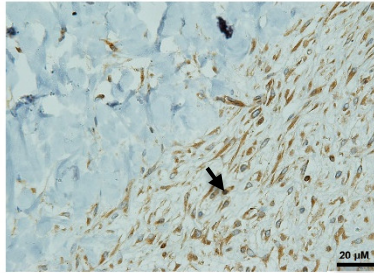
Lanette

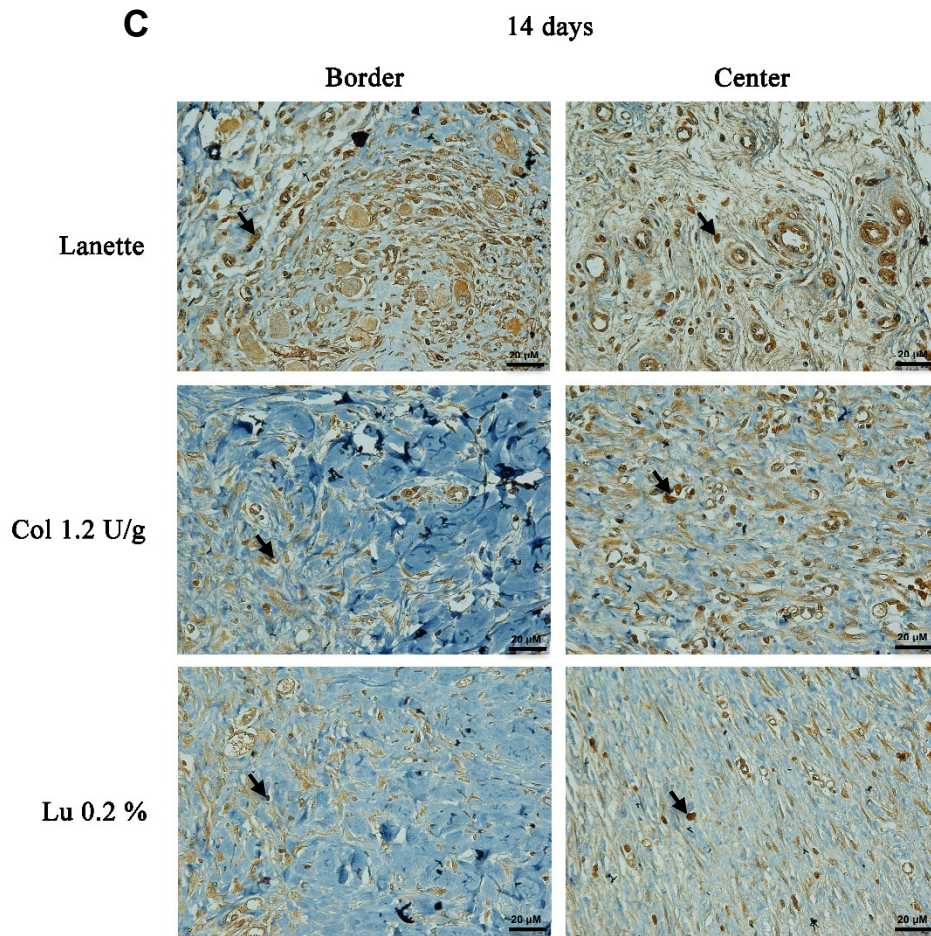


Col 1.2 U/g



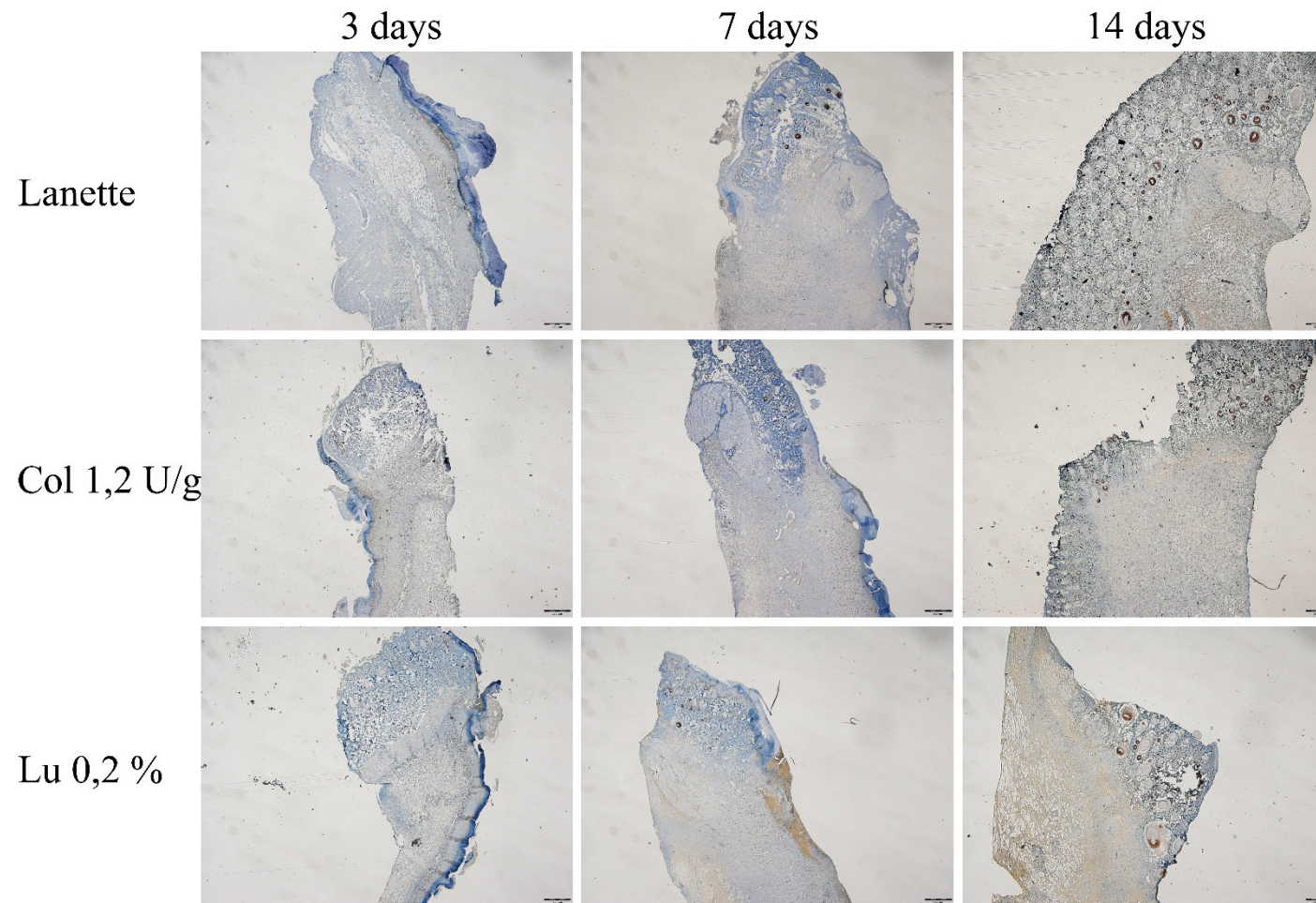
Lu 0.2 %





**Supplementary Fig. S2:** Photomicrography of the NF $\kappa$ B immunostaining in the border and lesion center of rats topically treated with lanette, collagenase 1.2 U/g or lupeol 0.2% creams in high magnification. A: 3 days after wound induction. B: 7 days after wound induction. C: 14 days after wound induction. Bar represents 20 $\mu$ m. Col: collagenase. Lu: lupeol. Black arrows indicate antibody staining against NF- $\kappa$ B.





**Supplementary Fig. S3:** Photomicrography of the Ki-67 immunostaining in skin tissue sections on day 3, 7 and 14 post wound induction in low magnification. Bar represents 500 $\mu$ m.

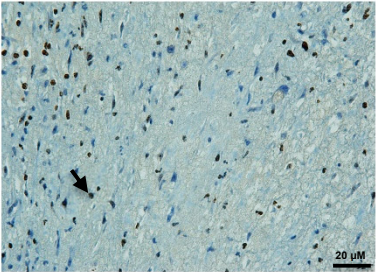
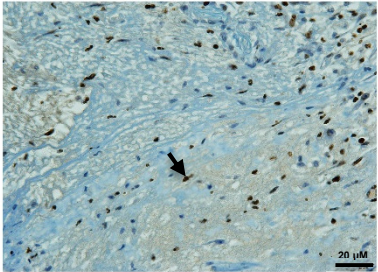
3 days

**A**

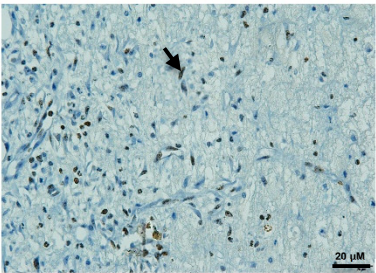
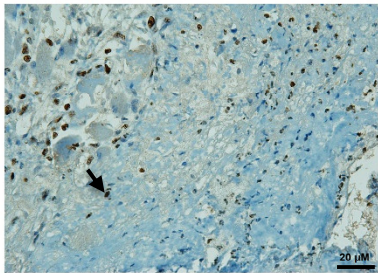
**Border**

**Center**

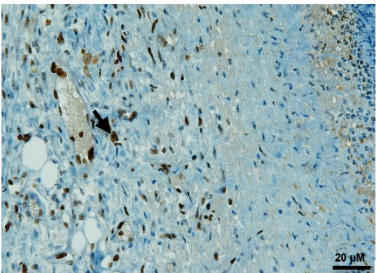
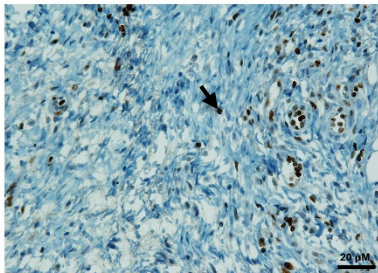
**Lanette**



**Col 1.2 U/g**



**Lu 0.2 %**





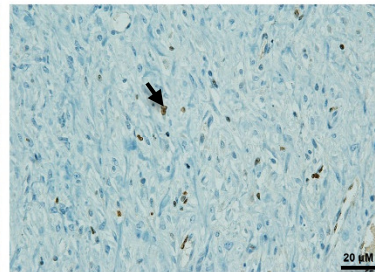
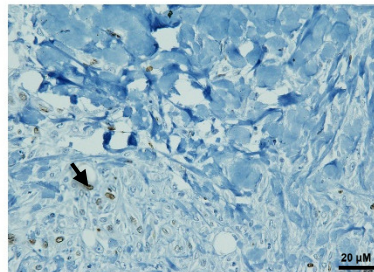
**B**

7 days

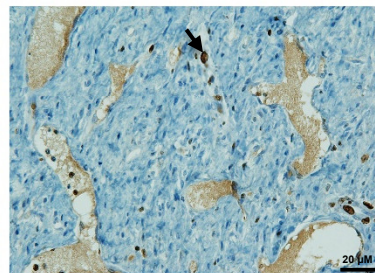
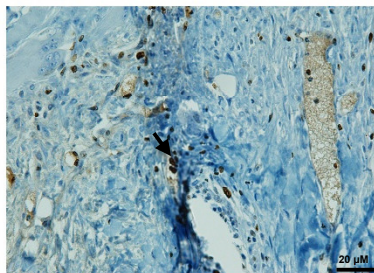
Border

Center

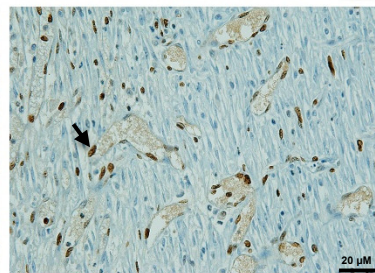
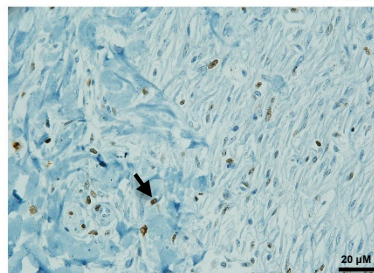
Lanette

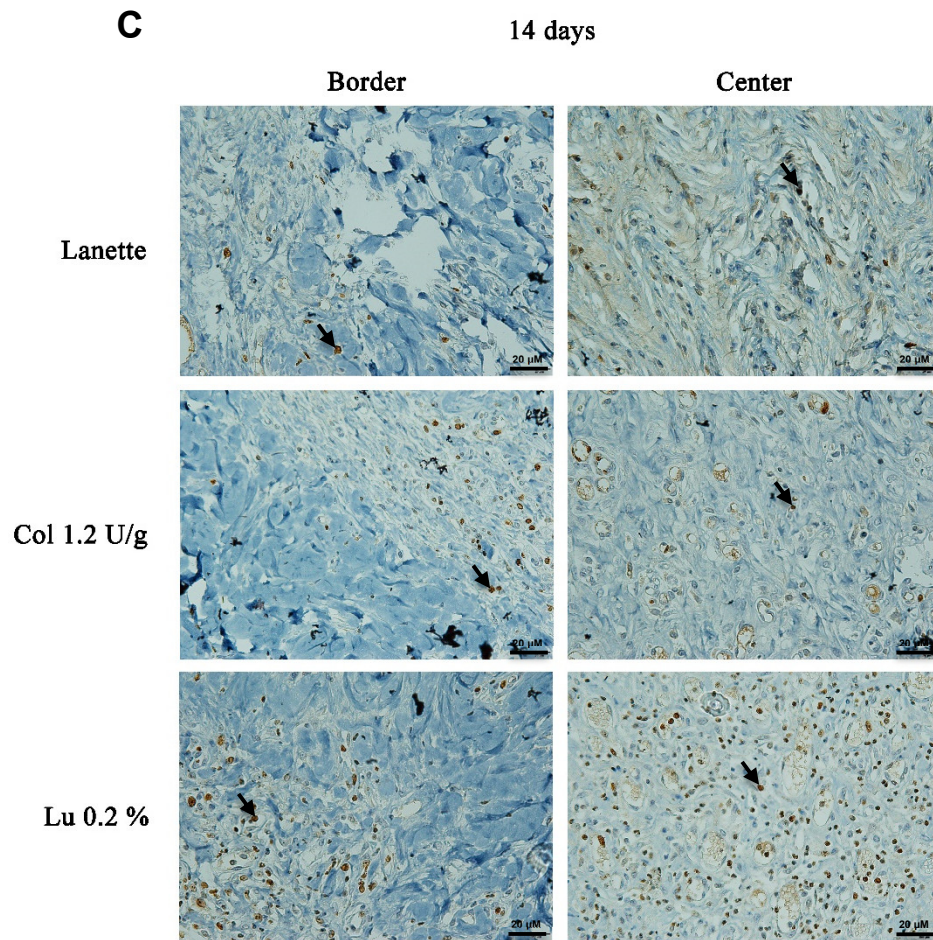


Col 1.2 U/g



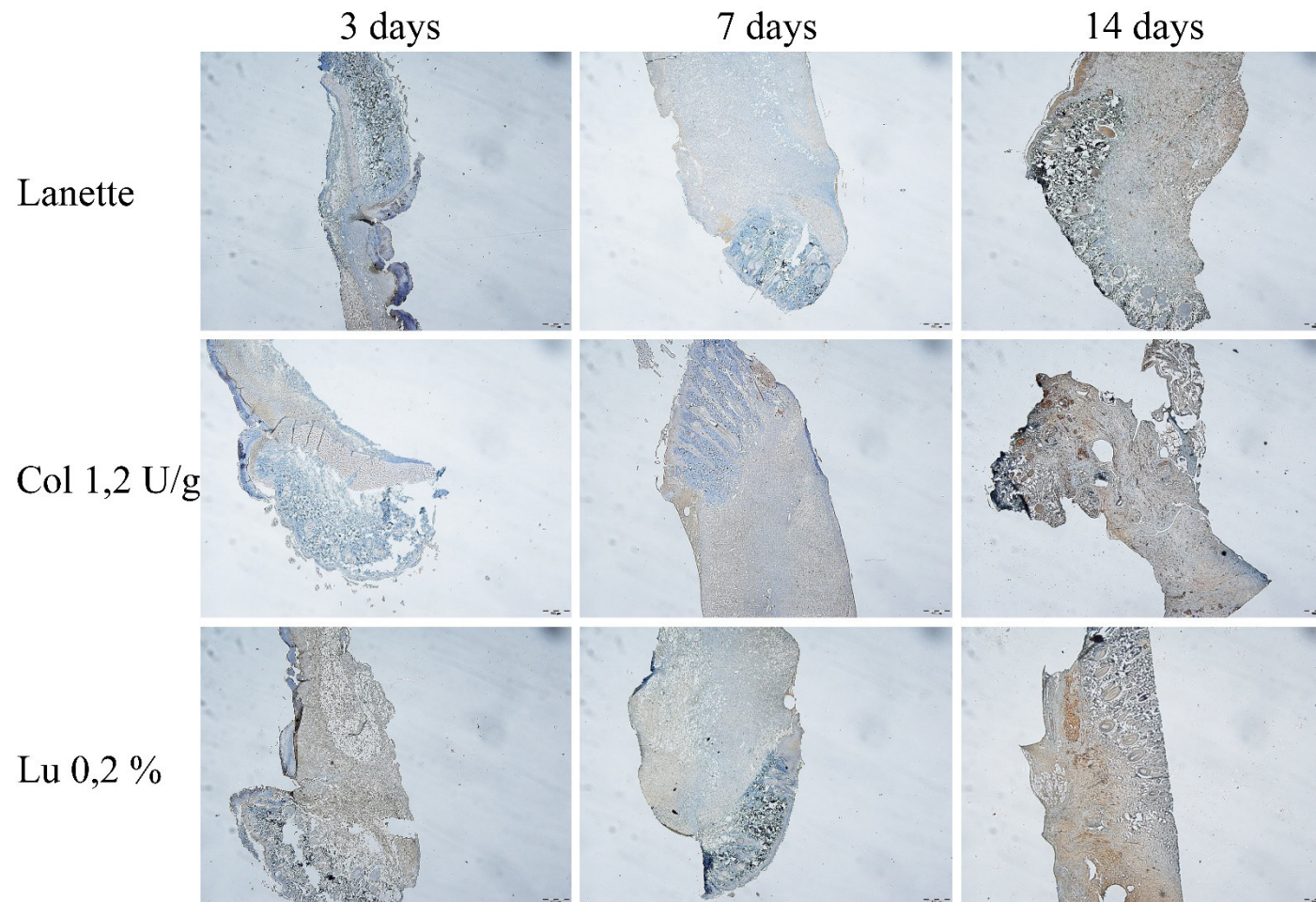
Lu 0.2 %





**Supplementary Fig. S4:** Photomicrography of the Ki-67 immunostaining in the border and lesion center of rats topically treated with lanette, collagenase 1.2 U/g or lupeol 0.2% creams in high magnification. A: 3 days after wound induction. B: 7 days after wound induction. C: 14 days after wound induction. Bar represents 20μm. Col: collagenase. Lu: lupeol. Black arrows indicate antibody staining against Ki-67.





**Supplementary Fig. S5:** Photomicrography of the VEGF immunostaining in skin tissue sections on day 3, 7 and 14 post wound induction in low magnification. Bar represents 500 $\mu$ m.

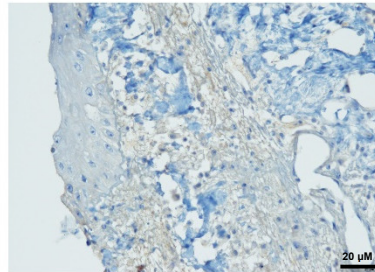
**A**

3 days

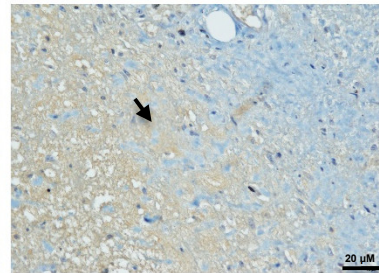
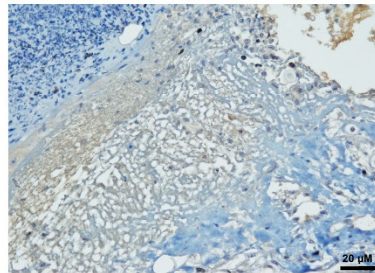
Border

Center

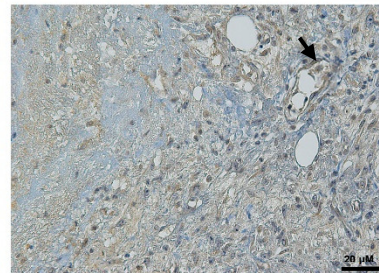
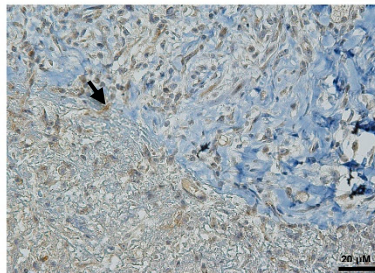
Lanette



Col 1.2 U/g



Lu 0.2 %





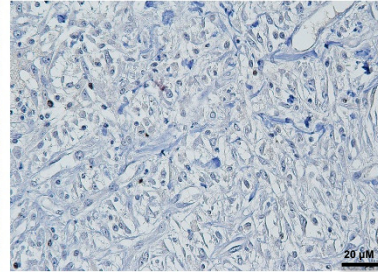
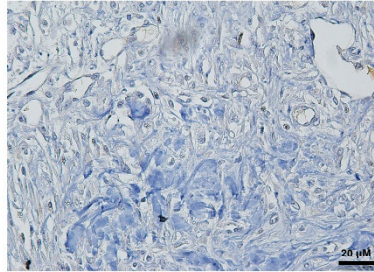
**B**

7 days

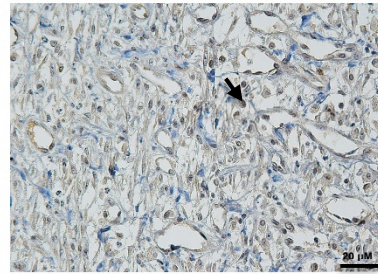
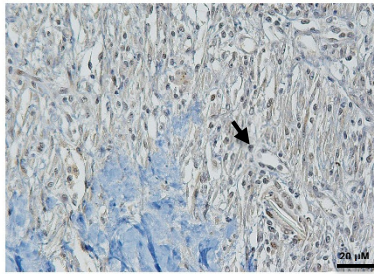
Border

Center

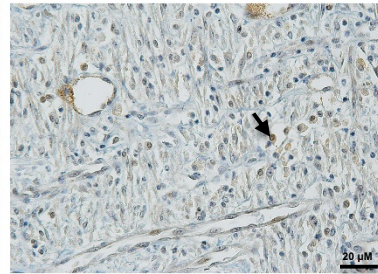
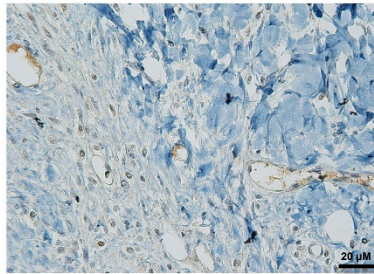
Lanette

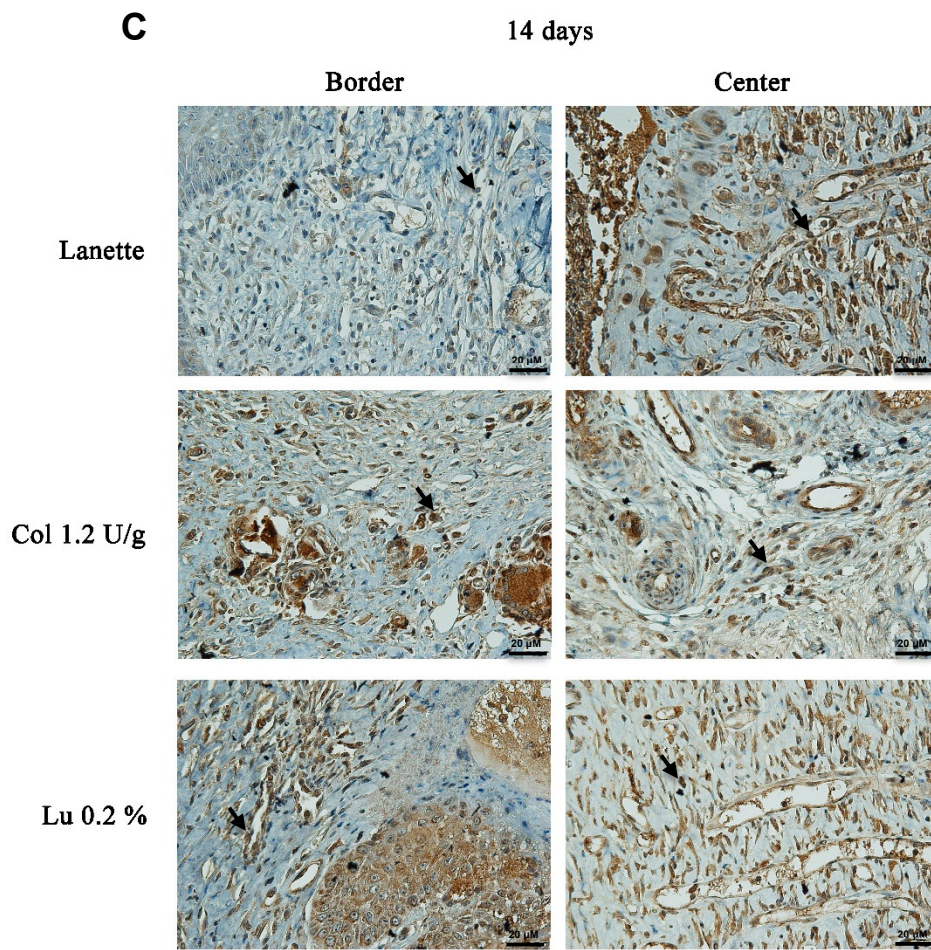


Col 1.2 U/g



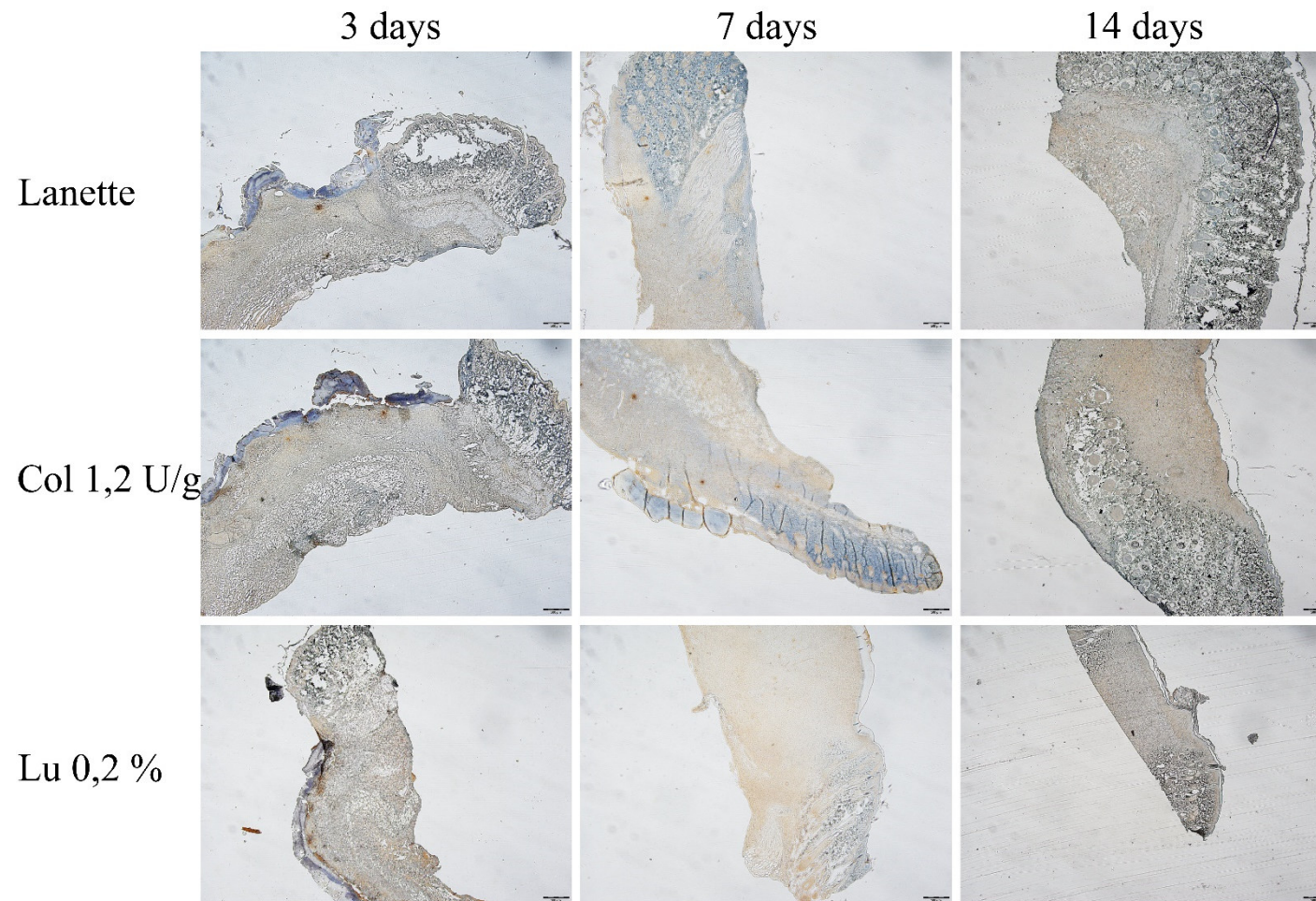
Lu 0.2 %





**Supplementary Fig. S6:** Photomicrography of the VEGF immunostaining in the border and lesion center of rats topically treated with lanette, collagenase 1.2 U/g or lupeol 0.2% creams in high magnification. A: 3 days after wound induction. B: 7 days after wound induction. C: 14 days after wound induction. Bar represents 20μm. Col: collagenase. Lu: lupeol. Black arrows indicate antibody staining against VEGF.





**Supplementary Fig. S7:** Photomicrography of the EGF immunostaining in skin tissue sections on day 3, 7 and 14 post wound induction in low magnification. Bar represents 500 $\mu$ m.

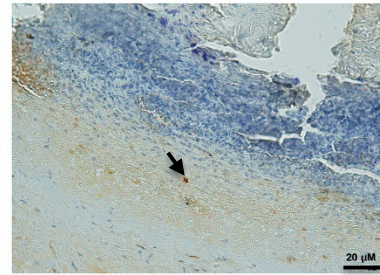
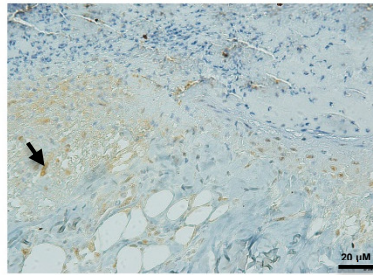
**A**

3 days

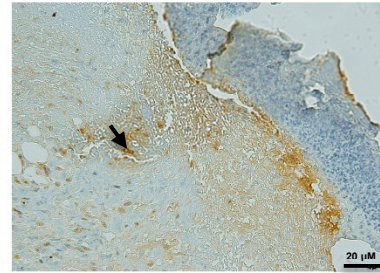
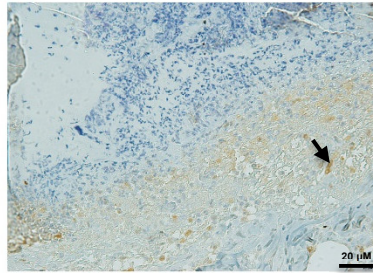
Border

Center

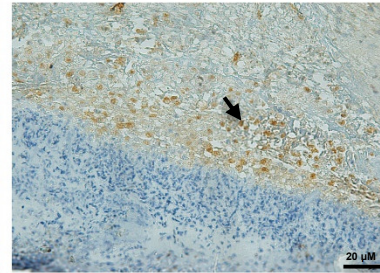
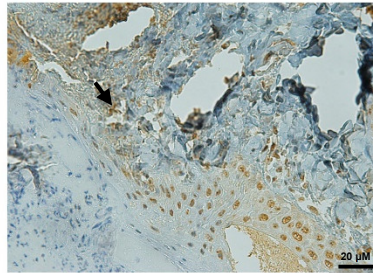
Lanette



Col 1.2 U/g



Lu 0.2 %





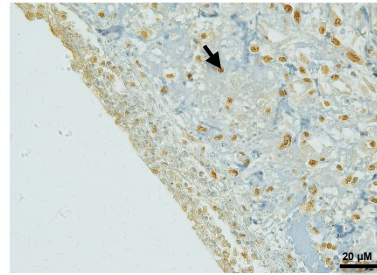
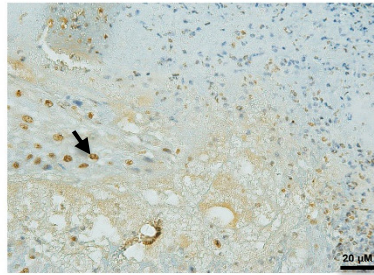
**B**

7 days

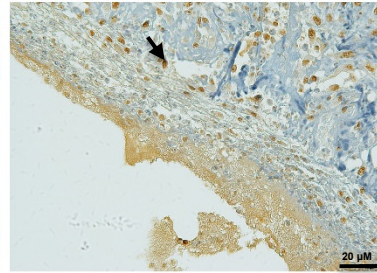
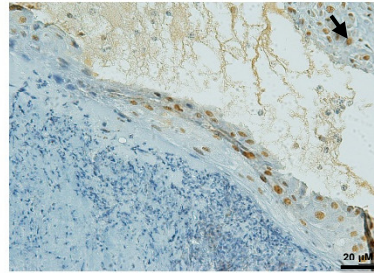
Border

Center

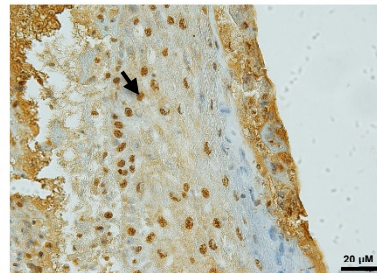
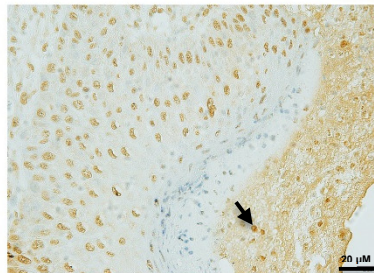
Lanette

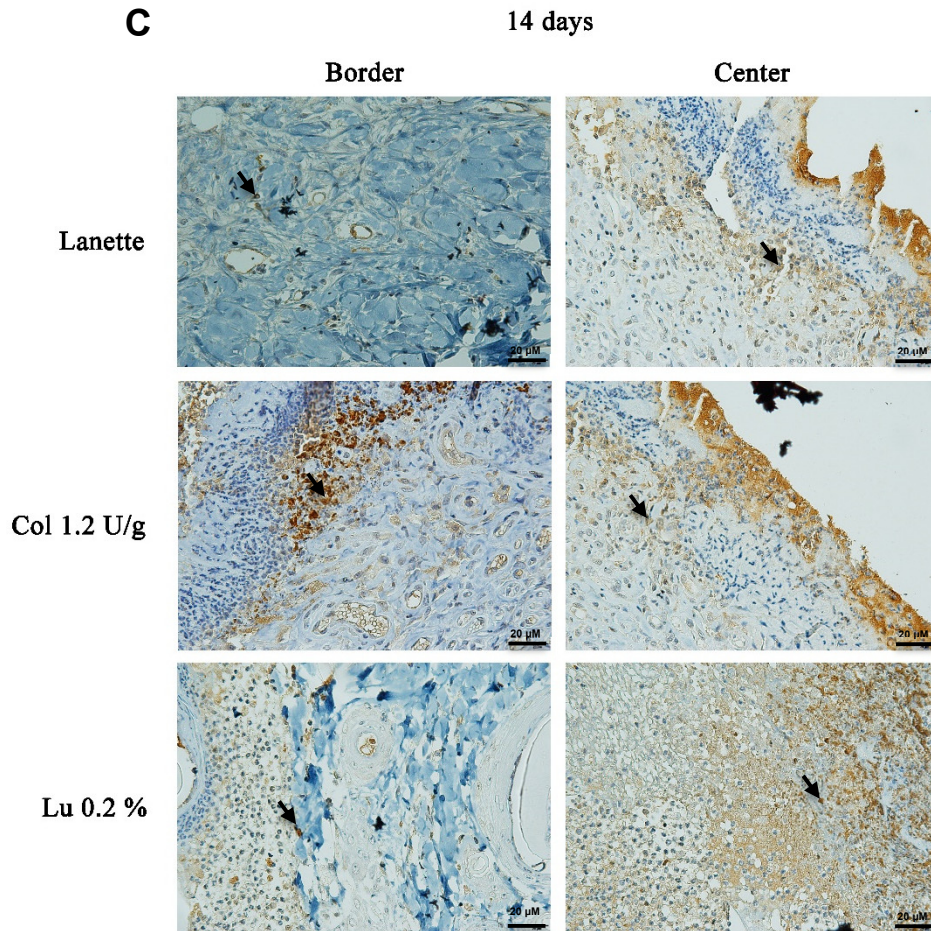


Col 1.2 U/g



Lu 0.2 %





**Supplementary Fig. S8:** Photomicrography of the EGF immunostaining in the border and lesion center of rats topically treated with lanette, collagenase 1.2 U/g or lupeol 0.2% creams in high magnification. A: 3 days after wound induction. B: 7 days after wound induction. C: 14 days after wound induction. Bar represents 20μm. Col: collagenase. Lu: lupeol. Black arrows indicate antibody staining against EGF.