

Supplementary materials

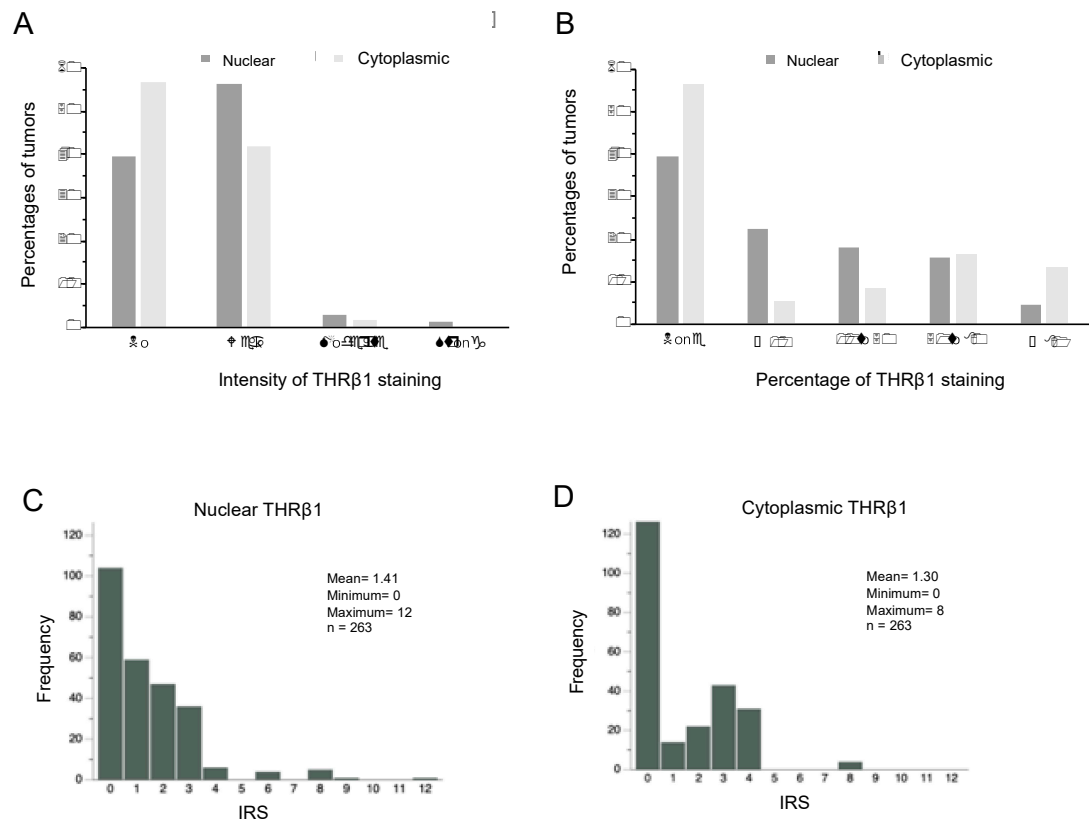


Figure S1. Distribution of intensity and percentages, and IRS frequency, of the nuclear and cytoplasmic THRβ1 stainings. The percentage of tumors with each intensity category (A) and percentage range (B) used for the IRS calculation are presented according to either the nuclear or cytoplasmic stainings of THRβ1. Distribution of IRS is represented according to either the nuclear (C) or cytoplasmic (D) stainings of THRβ1.

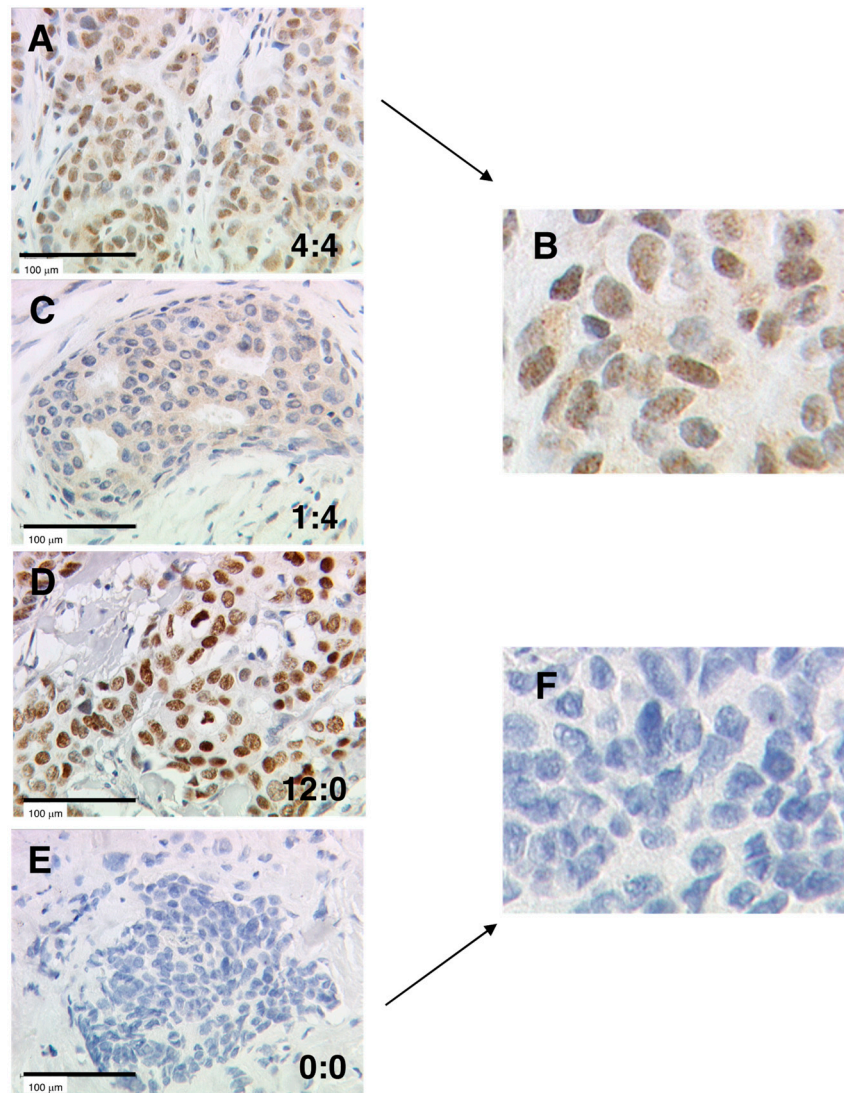


Figure S2. Immunohistochemical staining of THRα2 in BC samples. THRα2 staining is illustrated for 4 patients with examples of null or high expression. Samples A and E are enlarged in panels B and F respectively. Nucleo:cytoplasmic IRS (immunoreactive score) ratios are indicated in each photomicrograph (25× magnification) and scale bar equals 100 μm.

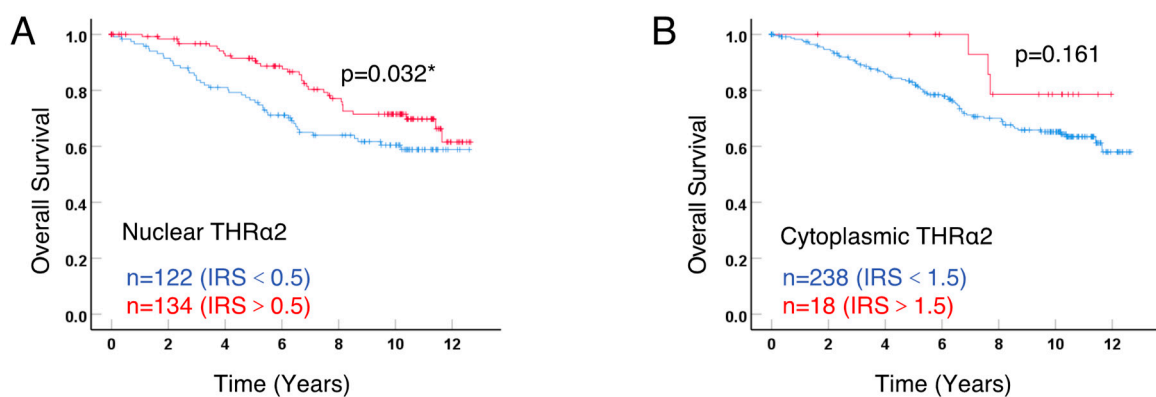


Figure S3. Kaplan-Meier analysis according to nuclear and cytoplasmic THRα2 expression. Overall survival (OS) curves are presented according to THRα2, with either the nuclear (A) or cytoplasmic (B) expression. The optimal IRS cut-off values with the number of cases for each group are indicated in each graph. Statistical significance is shown as *p*-value from log-rank test (*: *p* < 0.05).

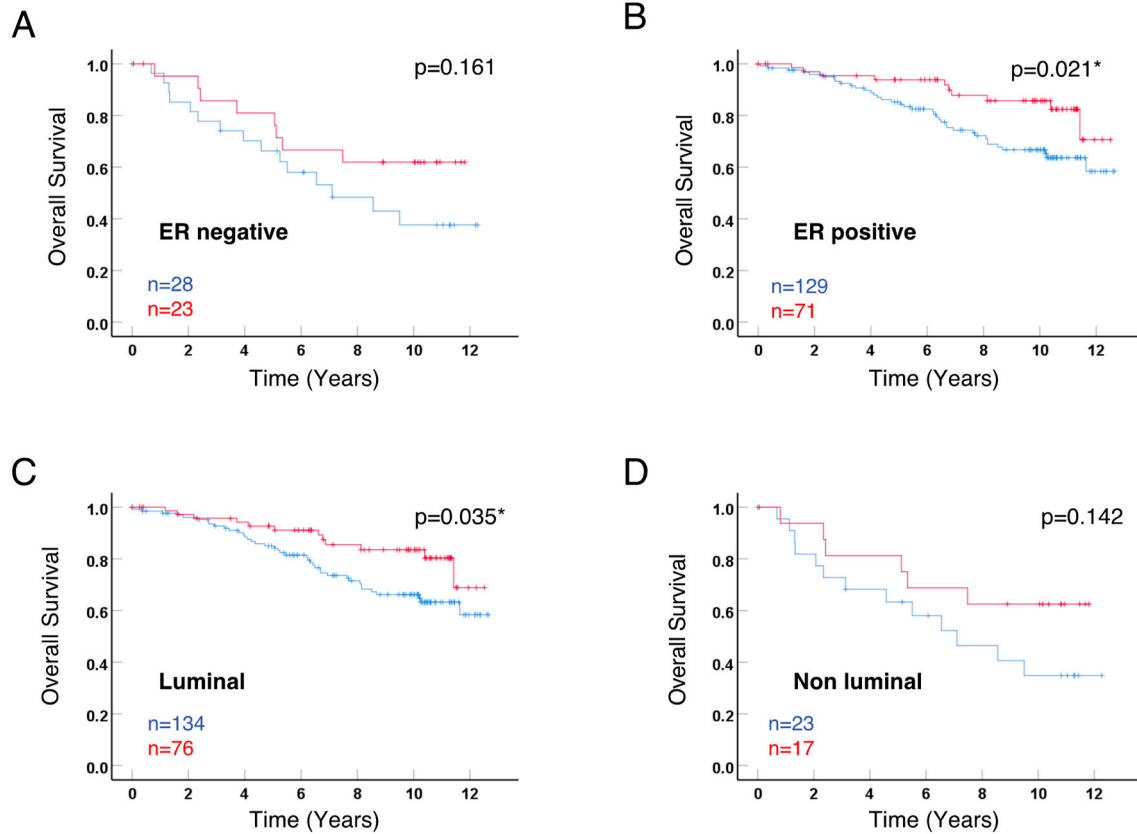


Figure S4. Kaplan-Meier analysis according to cytoplasmic THR β 1 expression in ER positive vs negative and luminal vs non luminal sub-groups of patients. Overall survival (OS) curves are presented according to cytoplasmic THR β 1, for either ER negative (A) or positive (B) sub-groups of patients, and for either luminal (C) or non-luminal (D) sub-groups. The optimal IRS cut-off value of 1.5 was used and the number of cases for each group are indicated in each graph. Statistical significance is shown as p-value from log-rank test (*: $p < 0.05$).

Table S1. Distribution of the tumors with nuclear and/or cytoplasmic positive THR β 1 expression.

Nuclear	Cytoplasmic	n	%
Negative	Negative	86	32.7
Positive	Negative	63	23.9
Negative	Positive	18	6.8
Positive	Positive	96	36.5

Table S2. Distribution of THR α 2 expression.

	Nuclear	Cytoplasmic
Mean IRS \pm SE	1.67 \pm 1.47	0.21* \pm 0.04
Median IRS	1	0
IRS range	0-12	0-4
Negative expression**	120 (45.63%)	236 (89.73%)
Positive expression**	143 (54.37%)	27 (10.27%)

* Correlations were statistically significant for $p < 0.05$ (*), using Spearman-Rho-Test using mean bilateral analysis; ** Negative and positive expression were respectively defined as IRS = 0 and IRS > 0 .