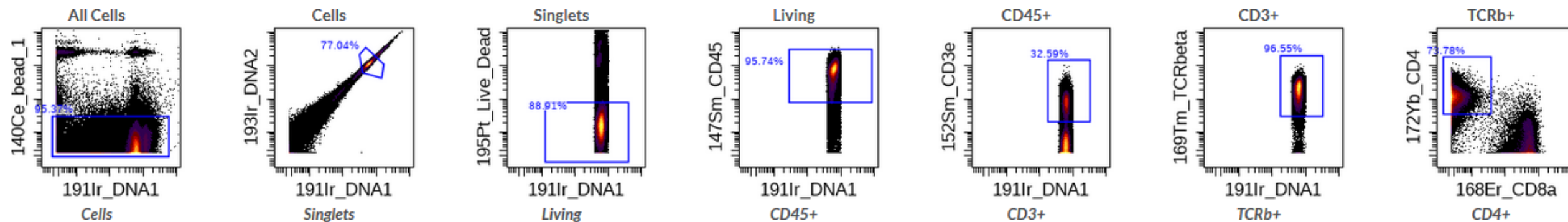


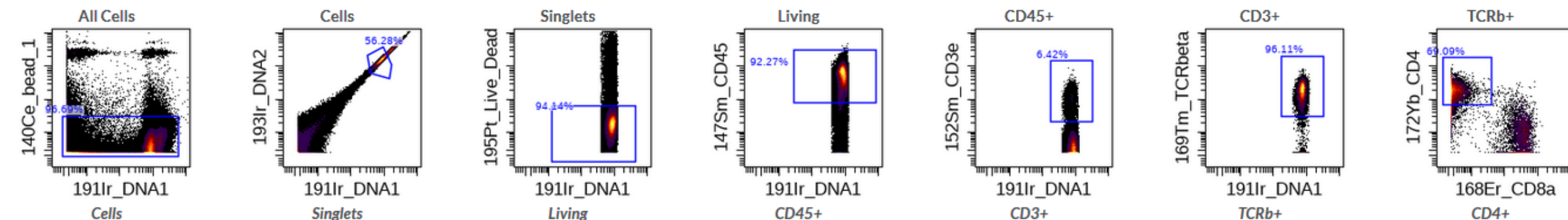
CD4+ T-cells

**Figure S3.** Manual gating strategy of spleen -derived leukocytes of naive, 4T1 tumor bearing and cisplatin treated 4T1 tumorous mice

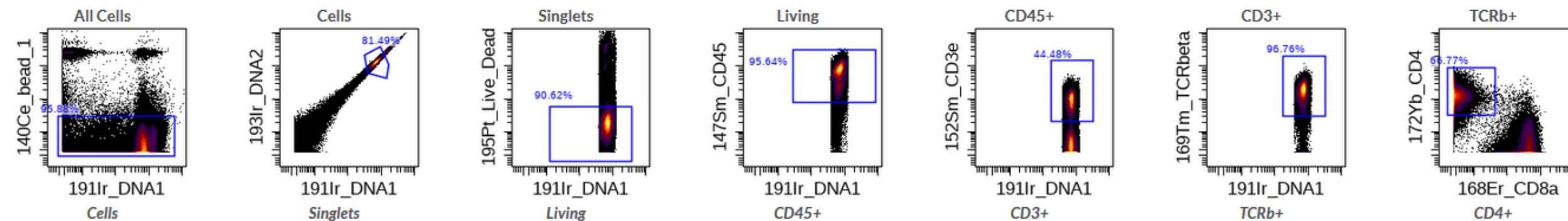
Naive



4T1

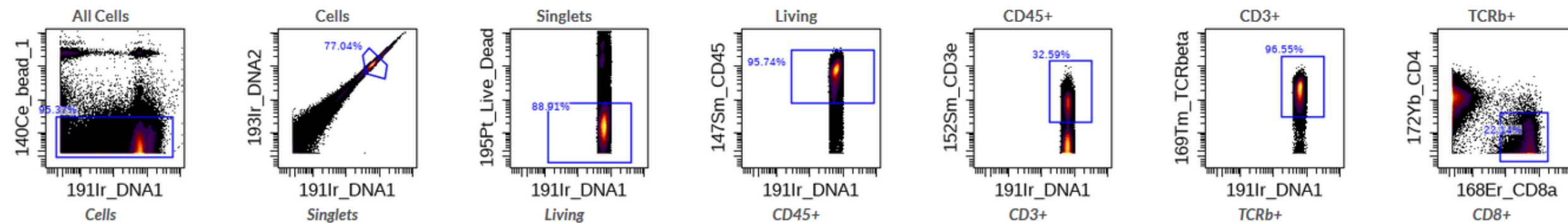


4T1  
+  
cisplatin

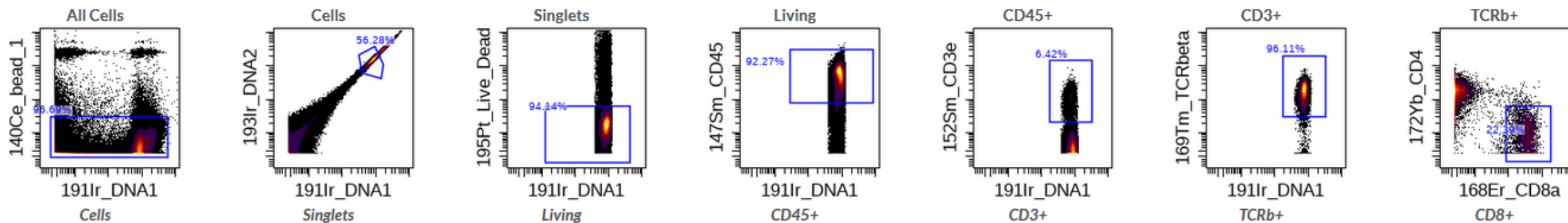


# CD8+ T-cells

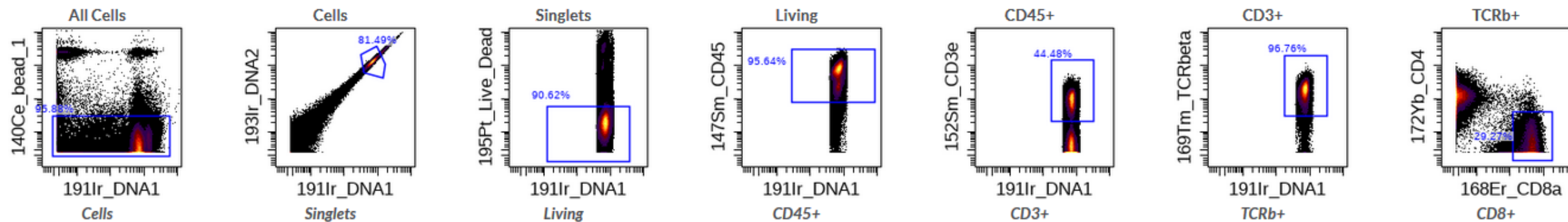
Naive



4T1

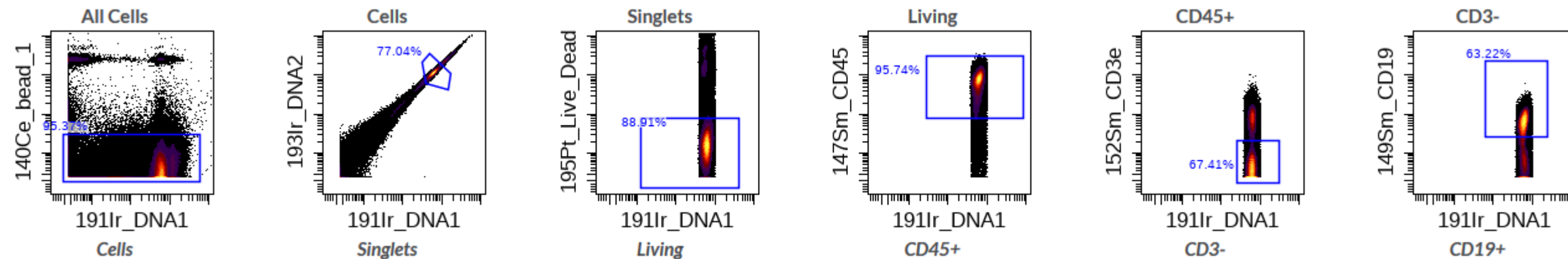


4T1  
+  
cisplatin

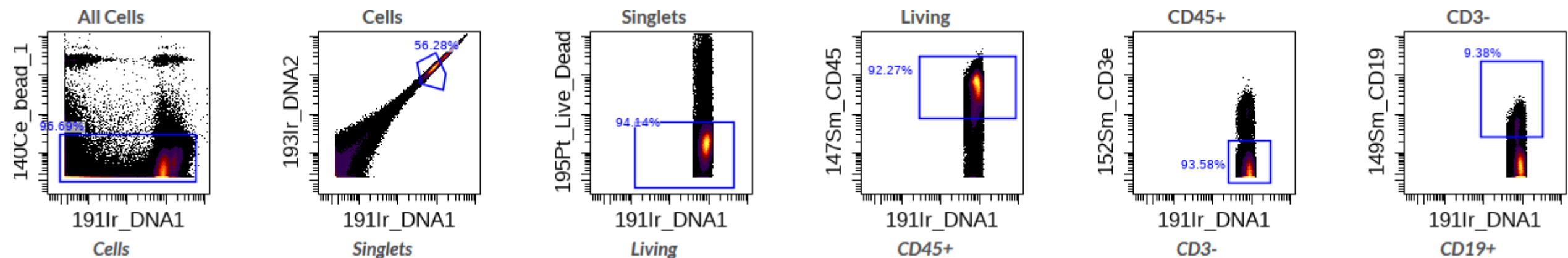


# CD19+ B-cells

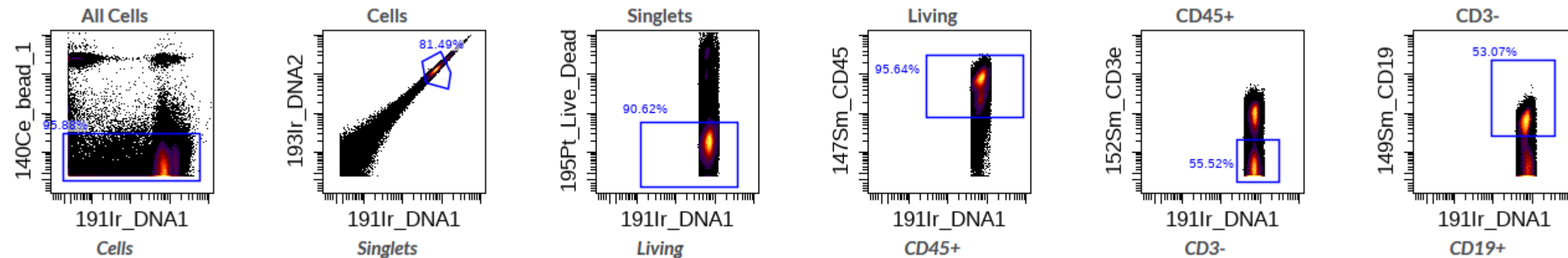
Naive



4T1

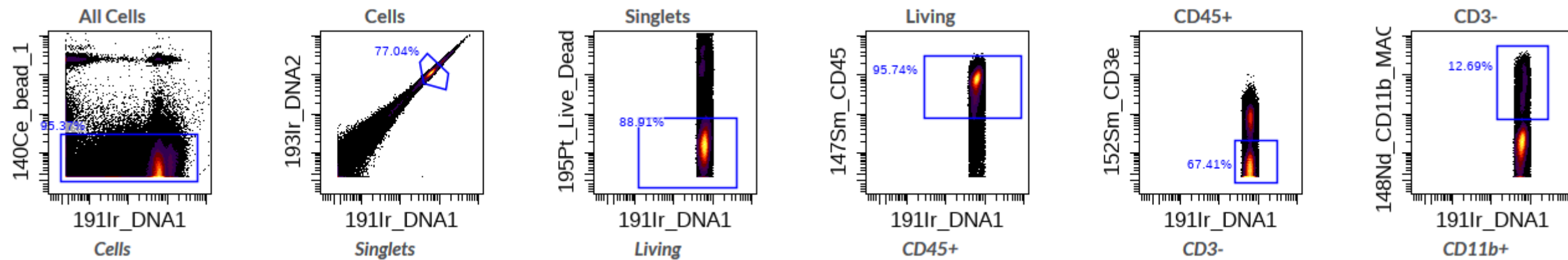


4T1  
+  
cisplatin

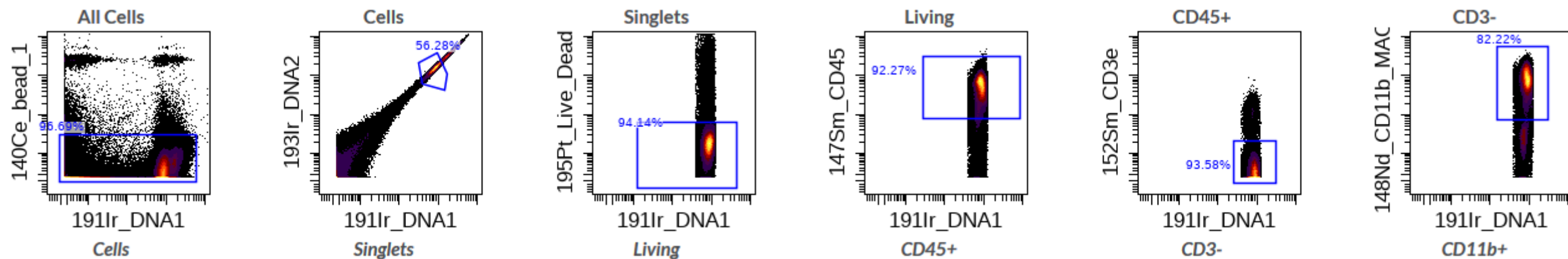


CD11b+

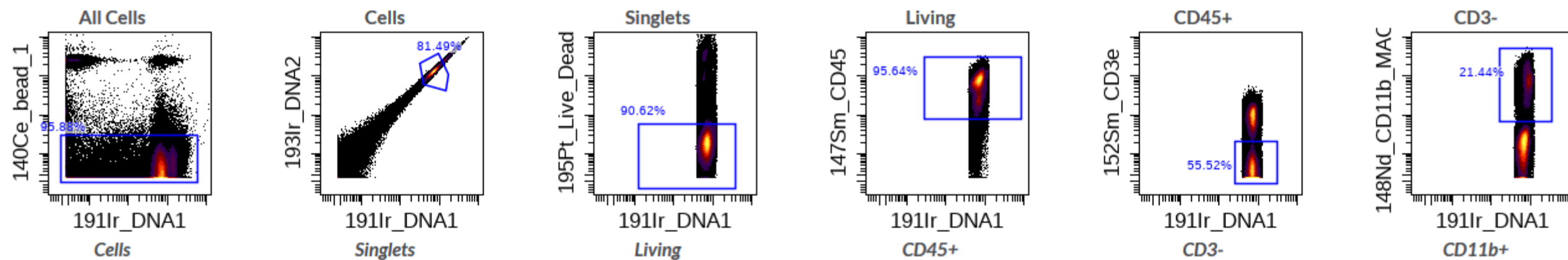
Naive



4T1



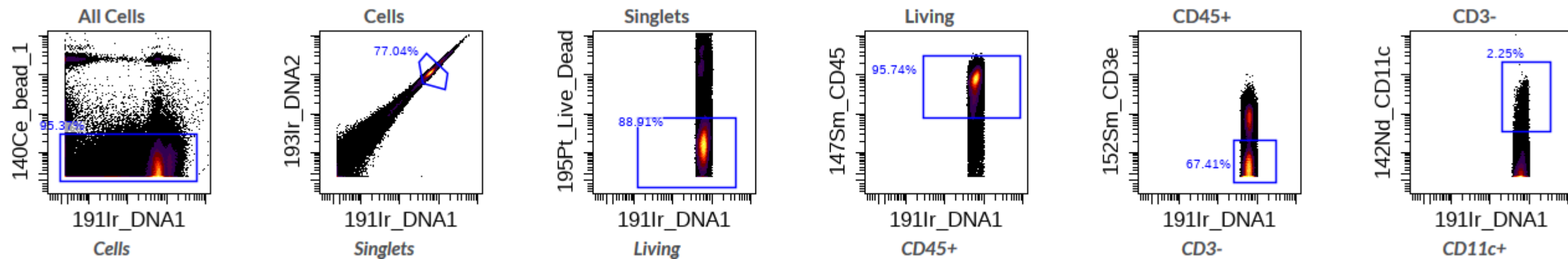
4T1  
+  
cisplatin



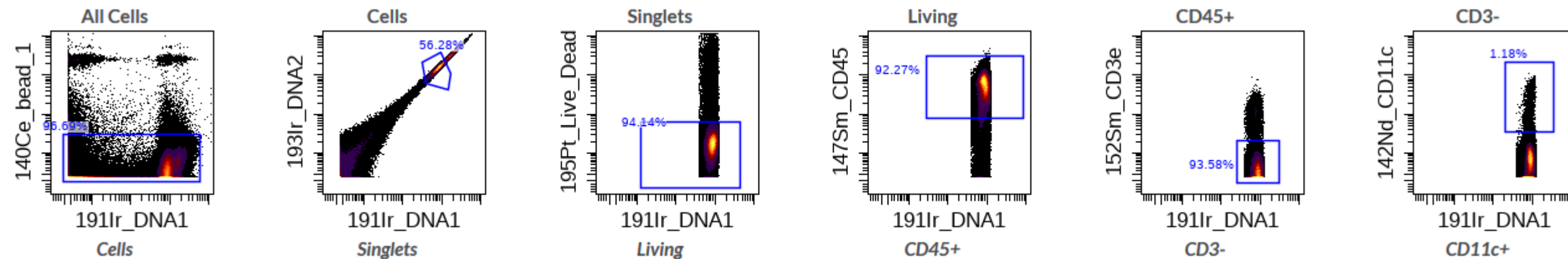


CD11c+

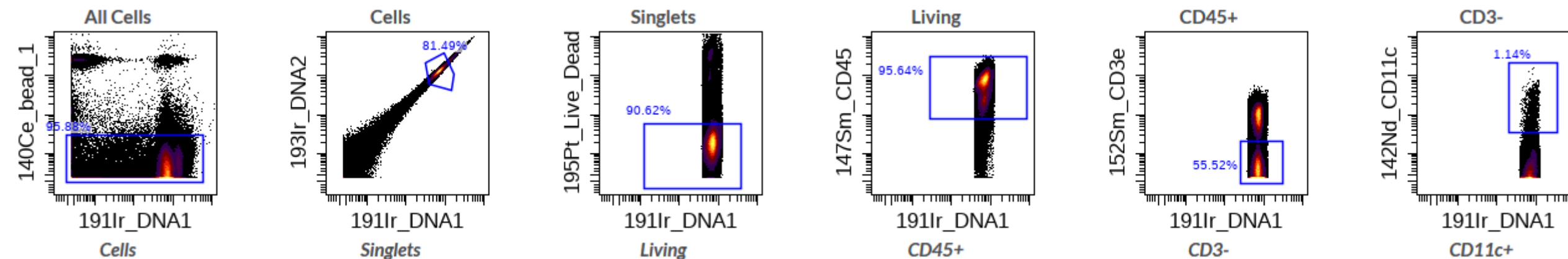
Naive



4T1

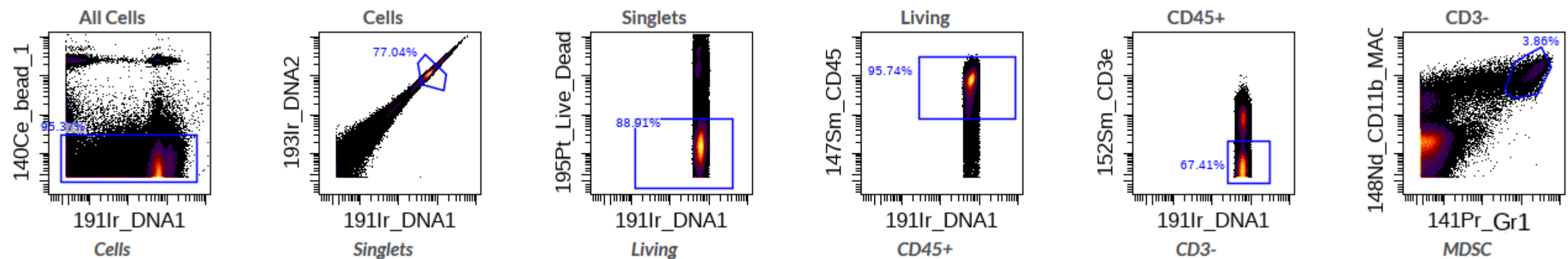


4T1  
+  
cisplatin

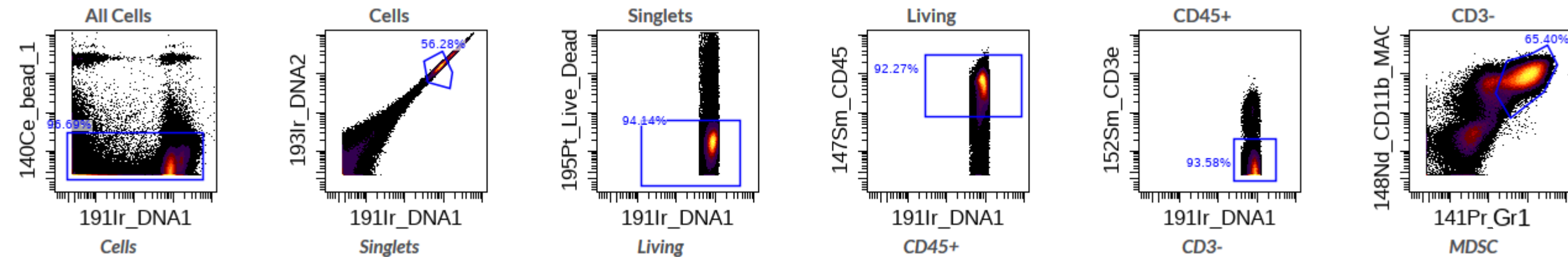


# MDSCs

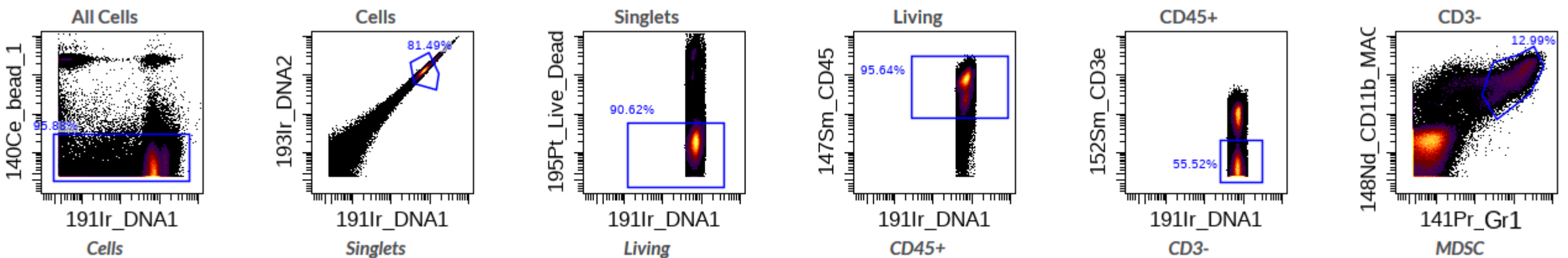
Naive



4T1

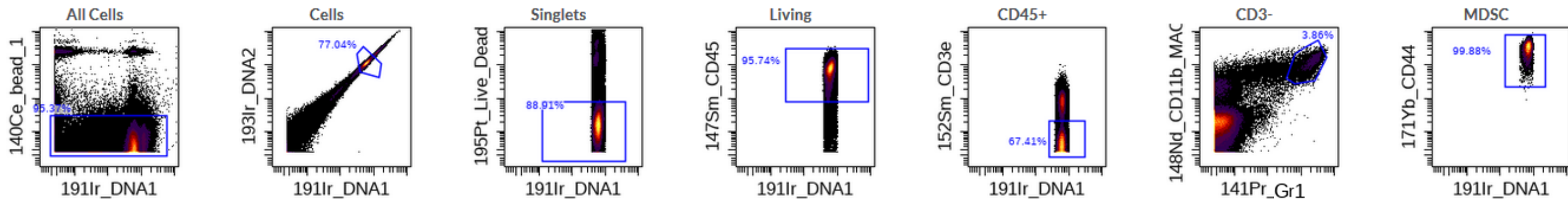


4T1  
+  
cisplatin

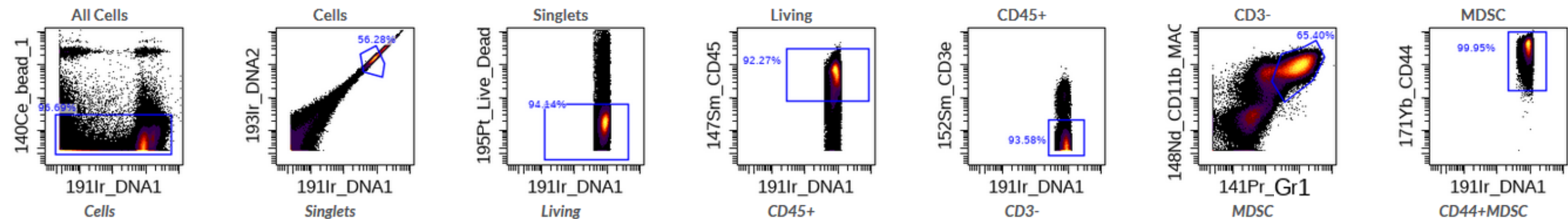


# CD44+ MDSCs

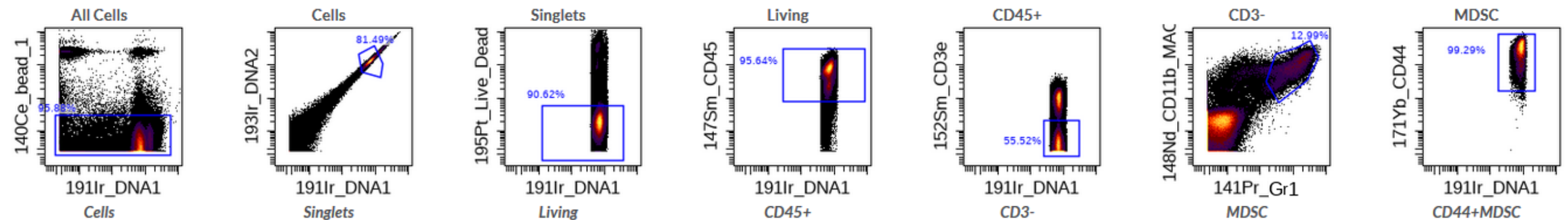
Naive



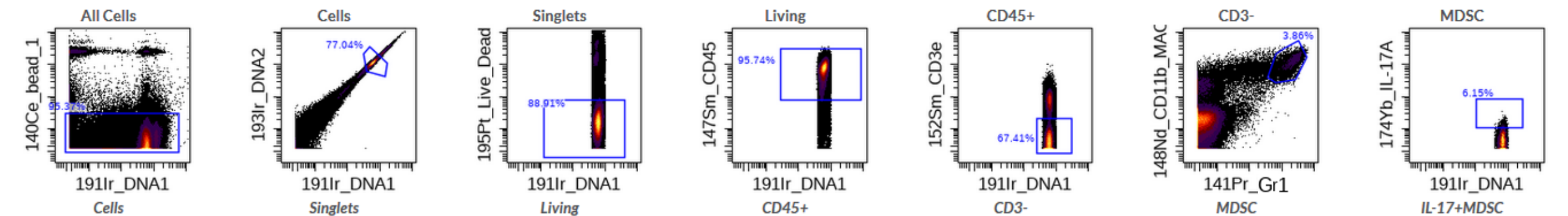
4T1



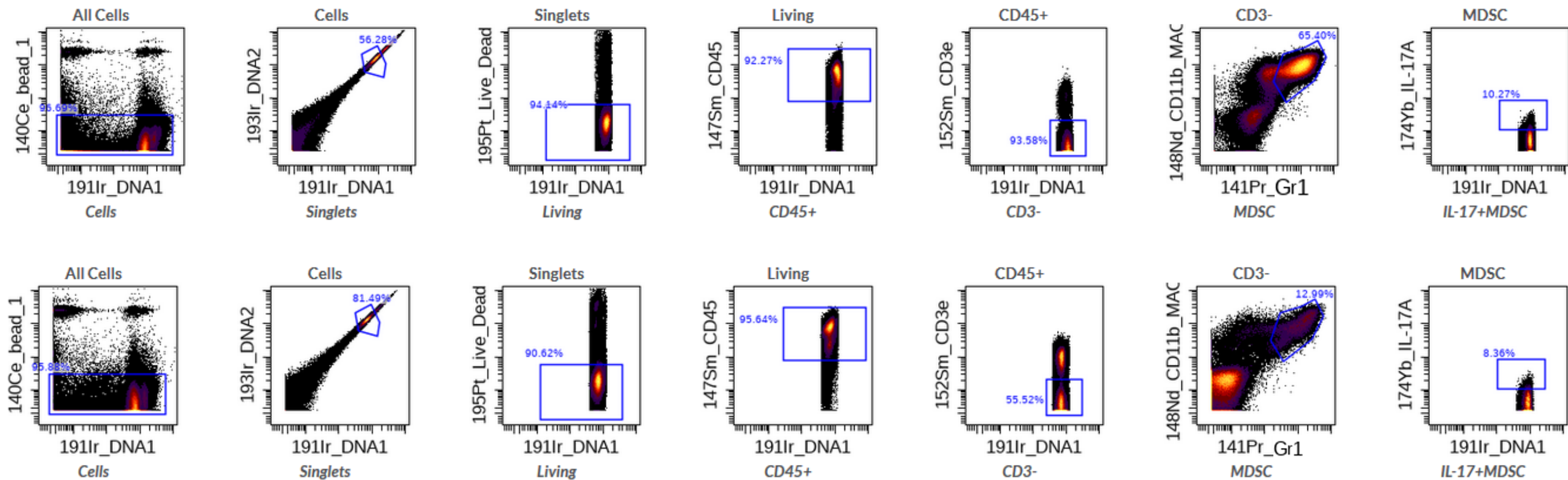
4T1  
+  
cisplatin



# Naive



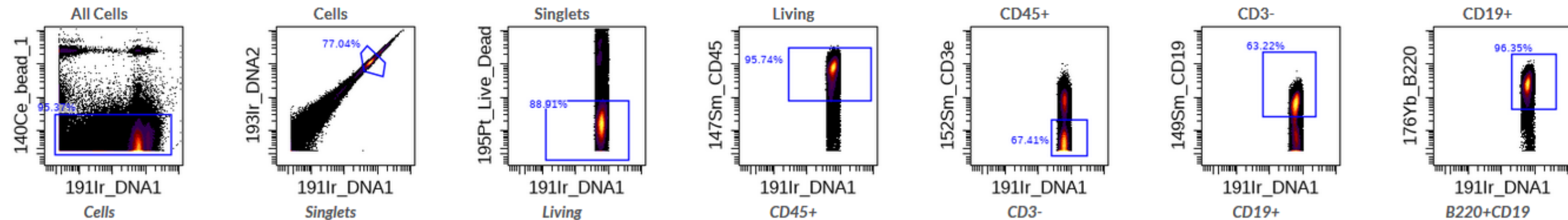
4T1  
+  
cisplatin



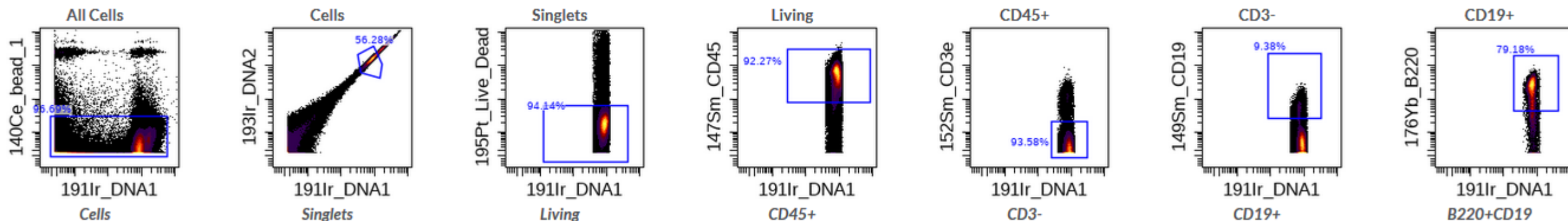


# B220+ B-cells

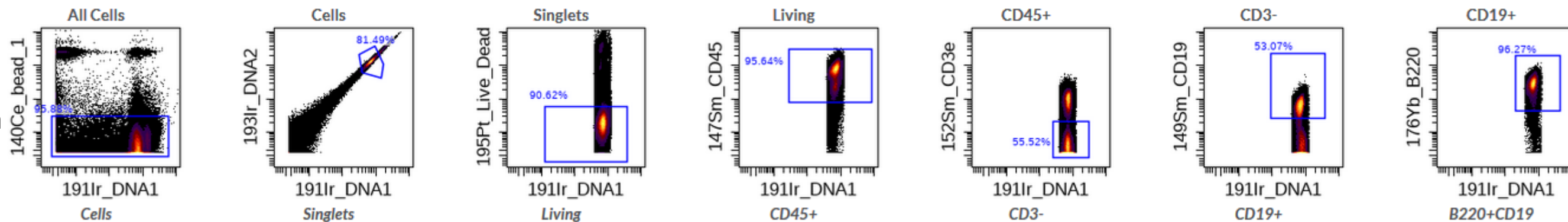
Naive



4T1

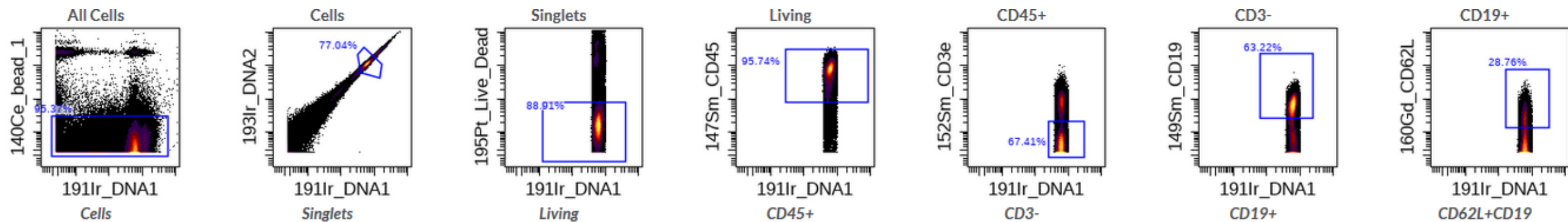


4T1  
+  
cisplatin

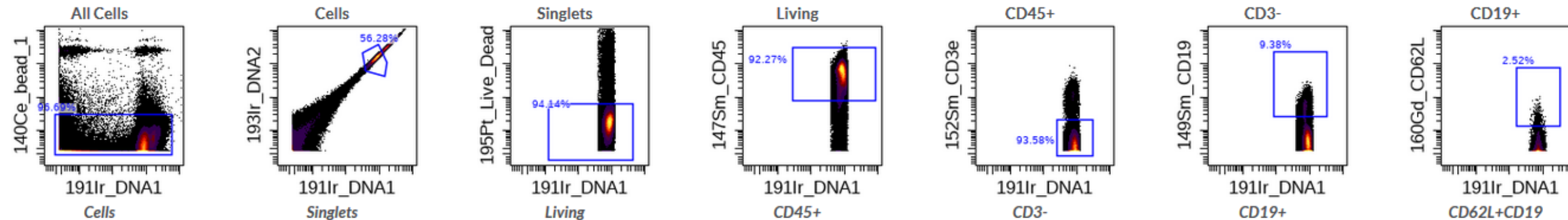


# CD62L+ B-cells

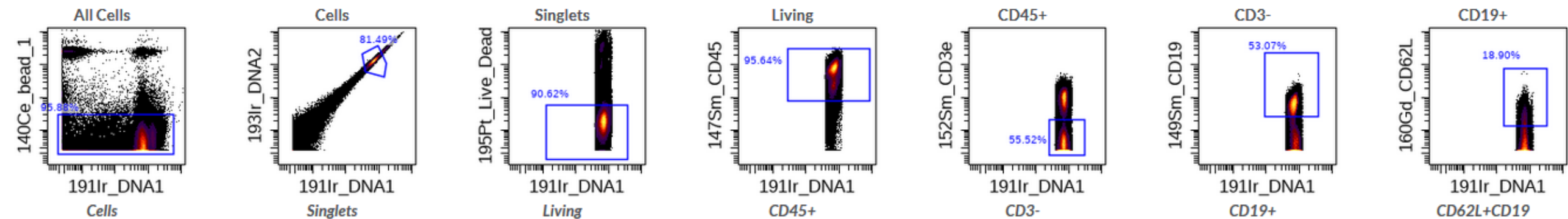
Naive



4T1

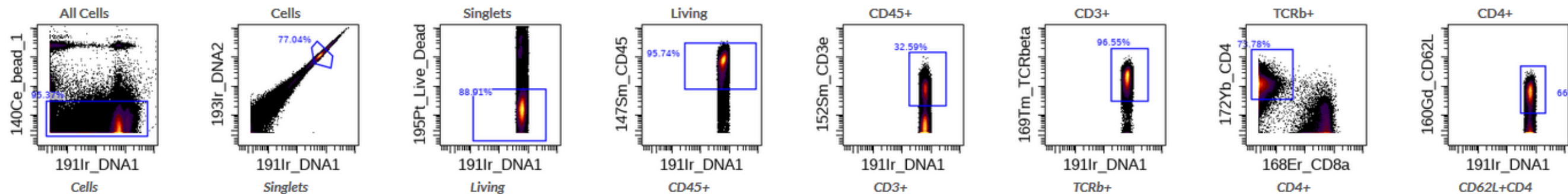


4T1  
+  
cisplatin

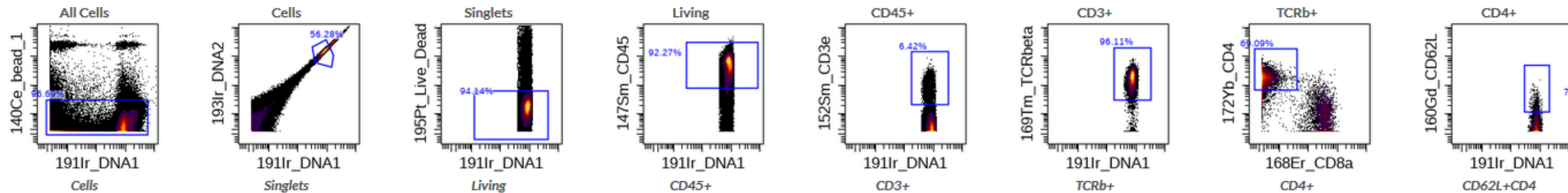


# CD62L+ CD4+ T-cells

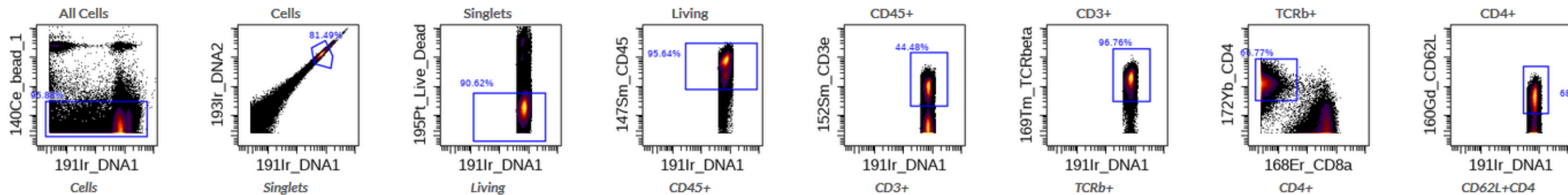
Naive



4T1



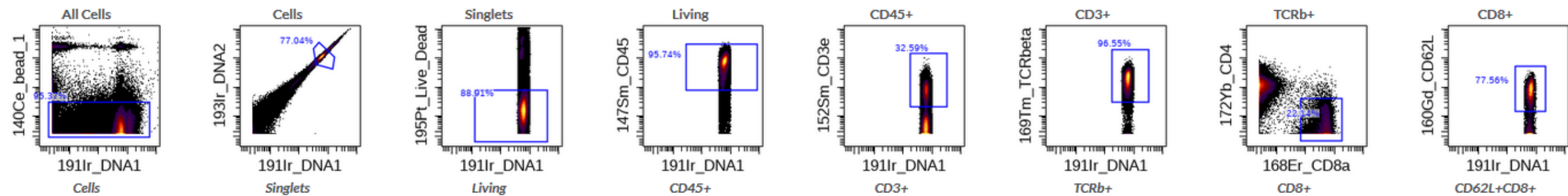
4T1  
+  
cisplatin



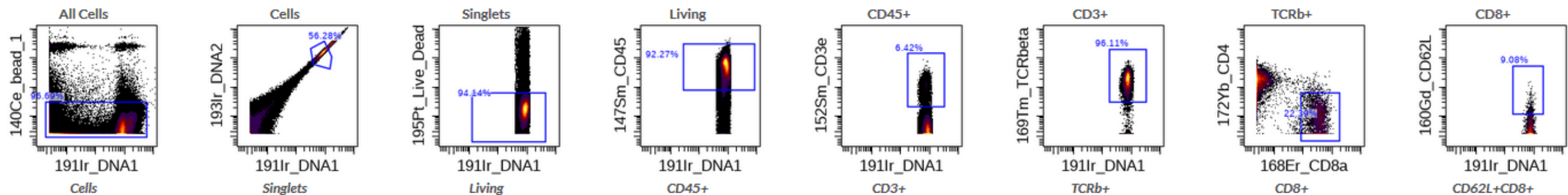


# CD62L+ CD8+ T-cells

Naive



4T1



4T1  
+  
cisplatin

